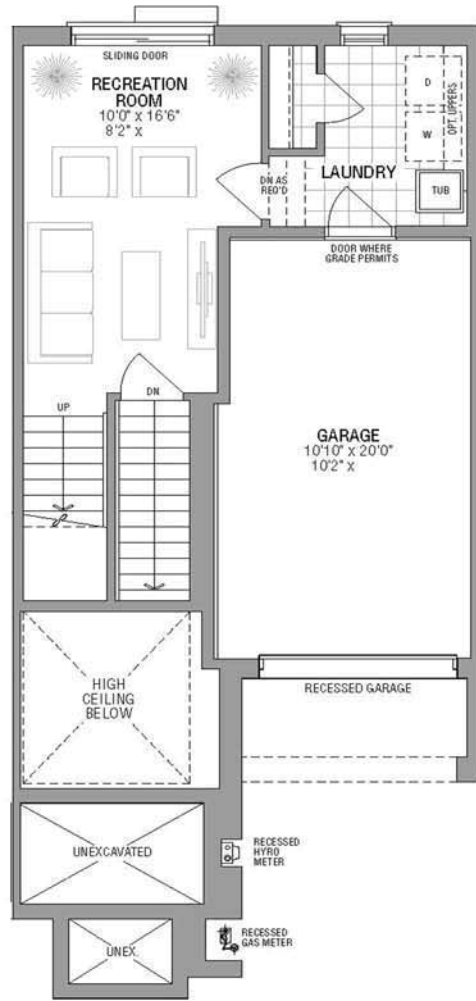
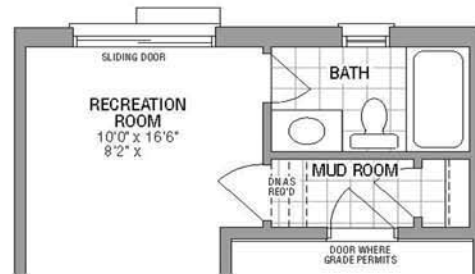


Calais

1788 sq ft
Plus 322 sq ft Terrace



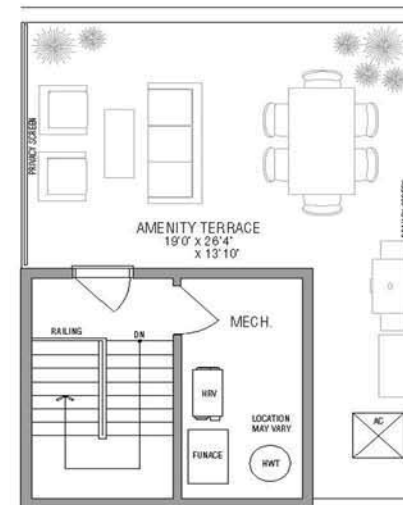
GROUND FLOOR



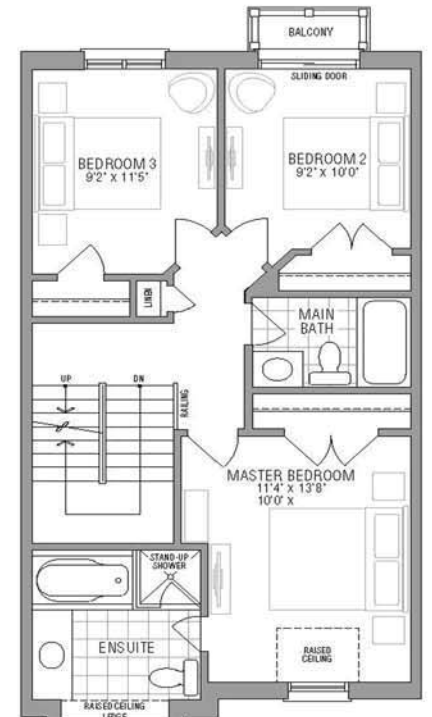
OPTIONAL GROUND FLOOR



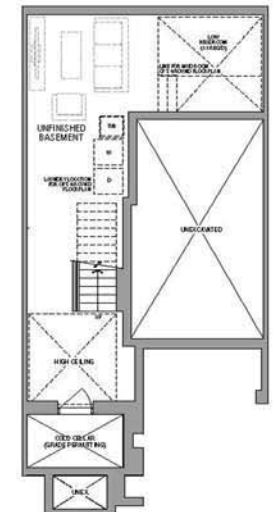
MAIN FLOOR



TERRACE/MECH.



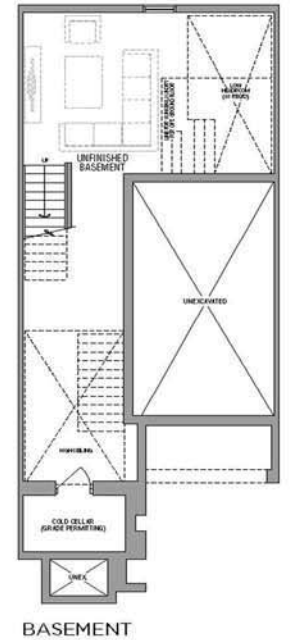
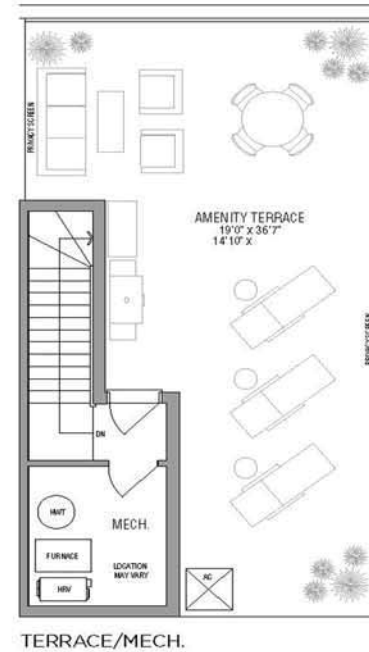
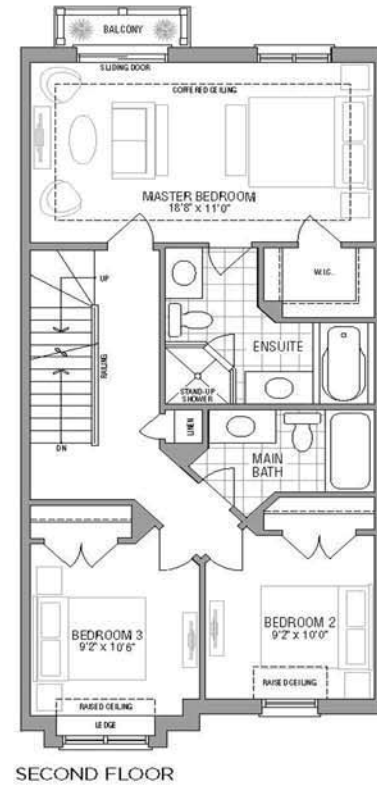
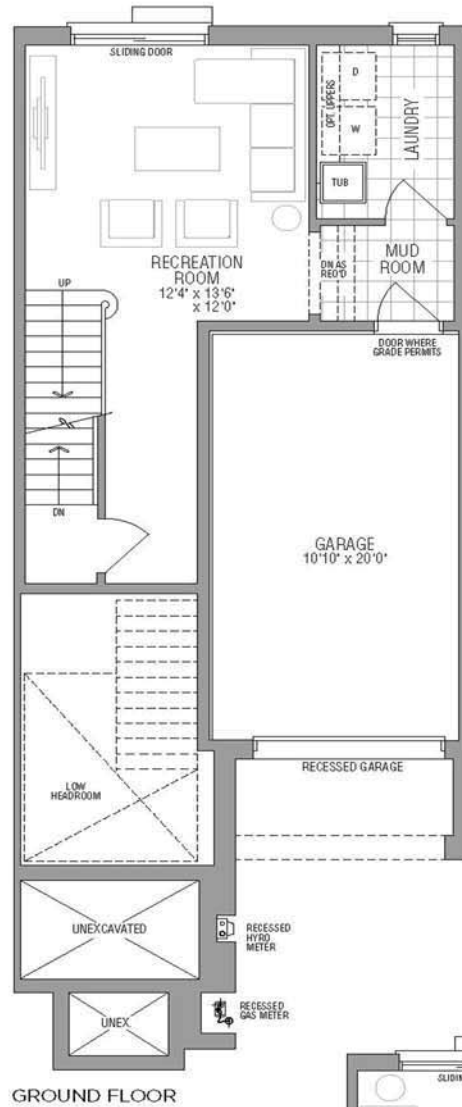
SECOND FLOOR



BASEMENT

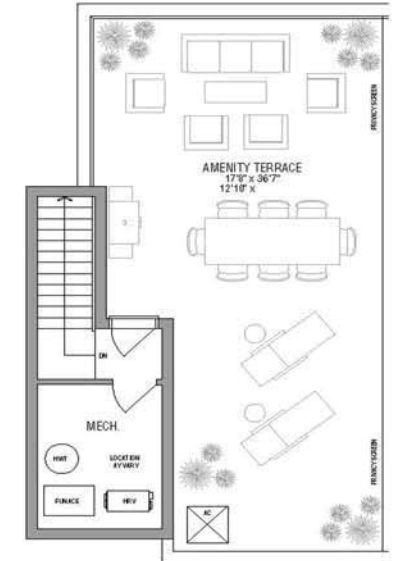
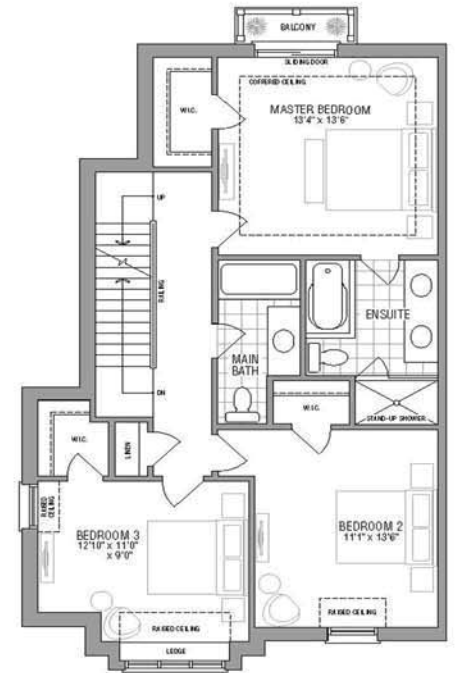
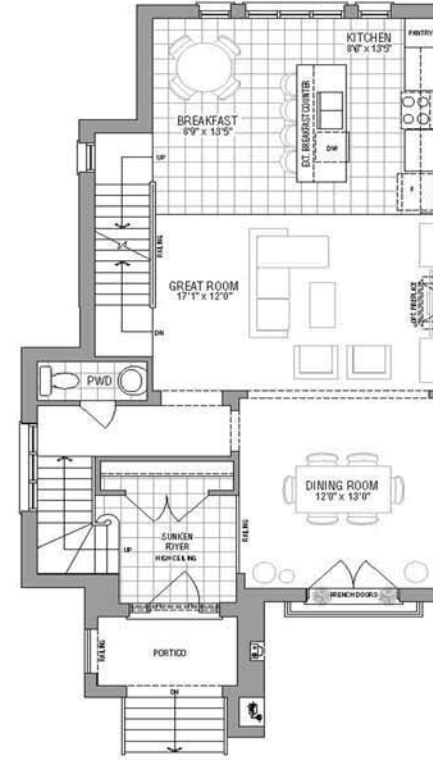
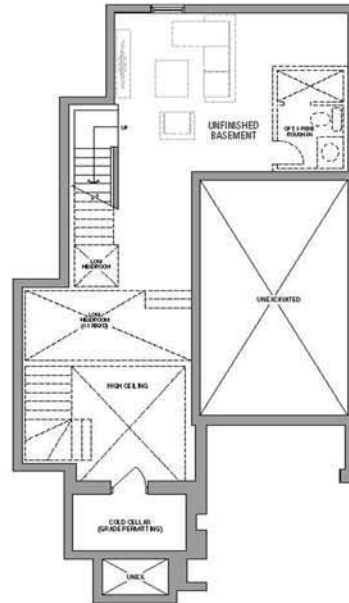
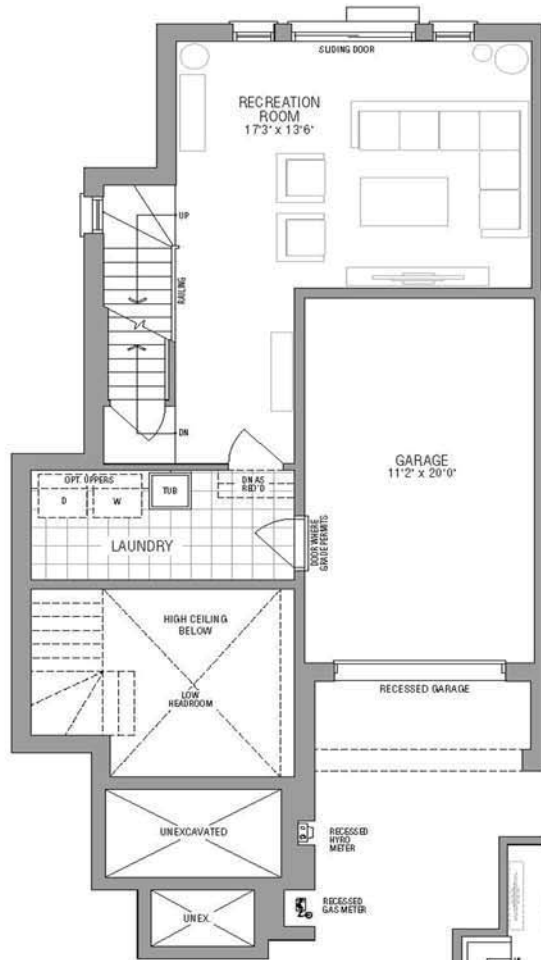
Rouen

2031 sq ft
Plus 529 sq ft Terrace



Versailles

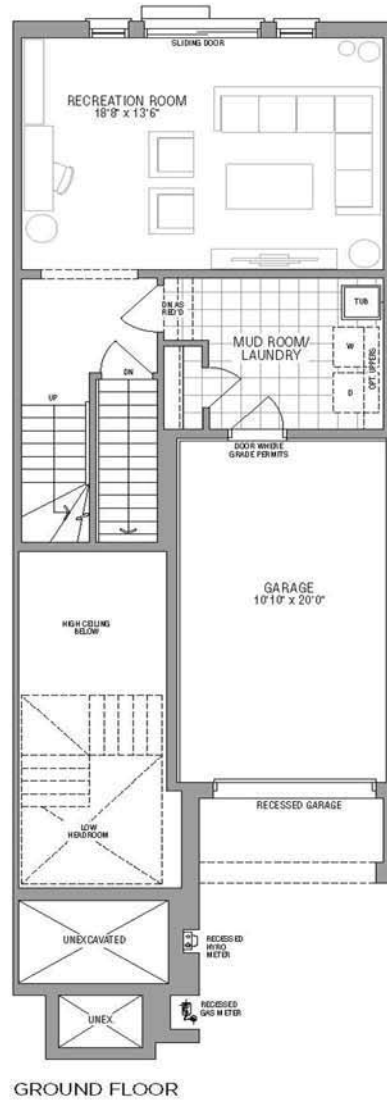
2395 sq ft
Plus 558 sq ft Terrace



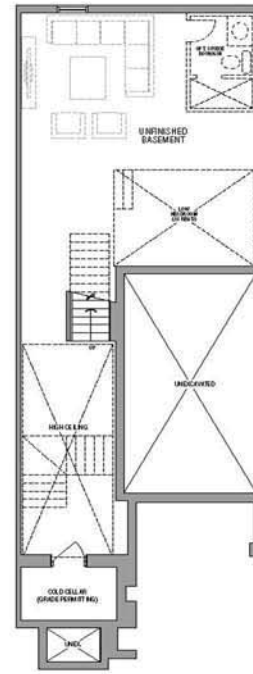
Roubaix

2524 sq ft

Plus 714 sq ft Terrace



GROUND FLOOR



BASEMENT



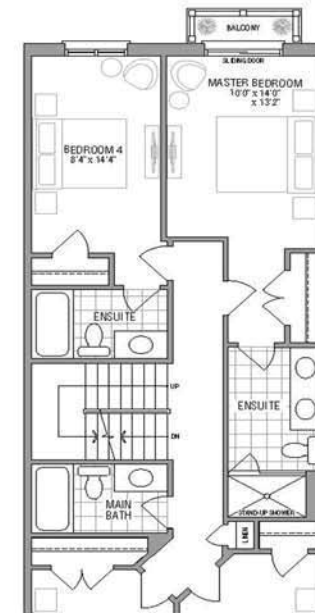
MAIN FLOOR



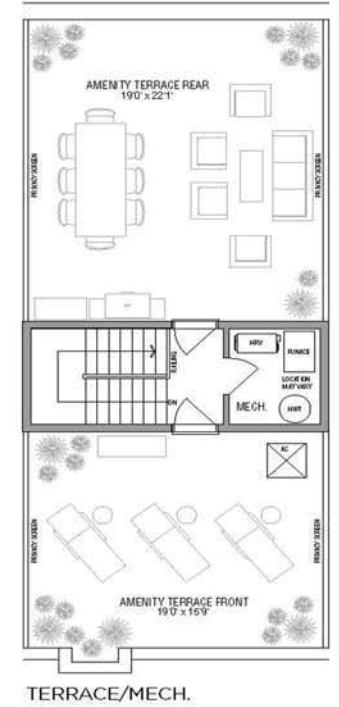
SECOND FLOOR



OPTIONAL GROUND FLOOR



OPTIONAL 4-BEDROOM SECOND FLOOR



TERRACE/MECH.

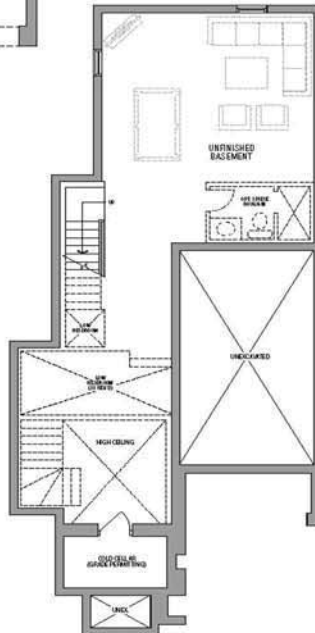
Le Mans

2842 sq ft

Plus 699 sq ft Terrace



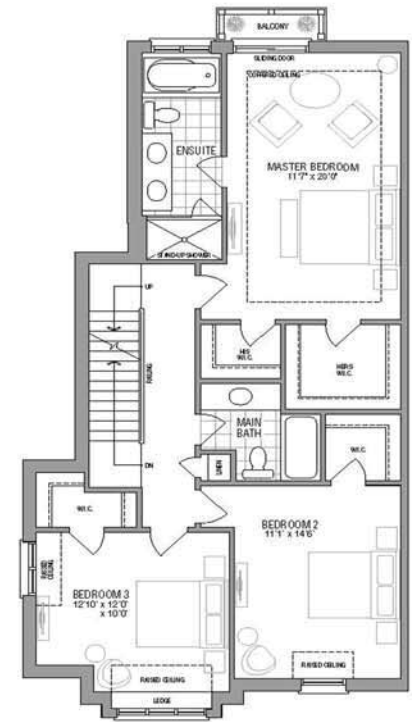
GROUND FLOOR



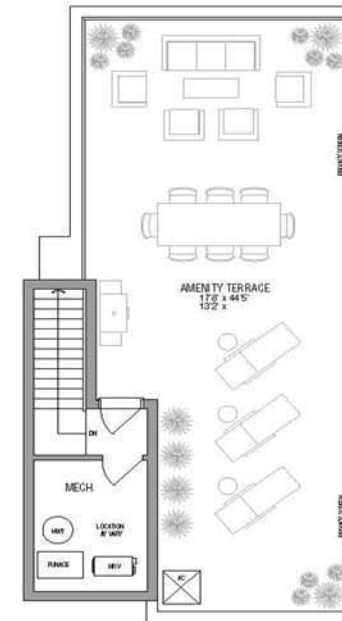
BASEMENT



MAIN FLOOR



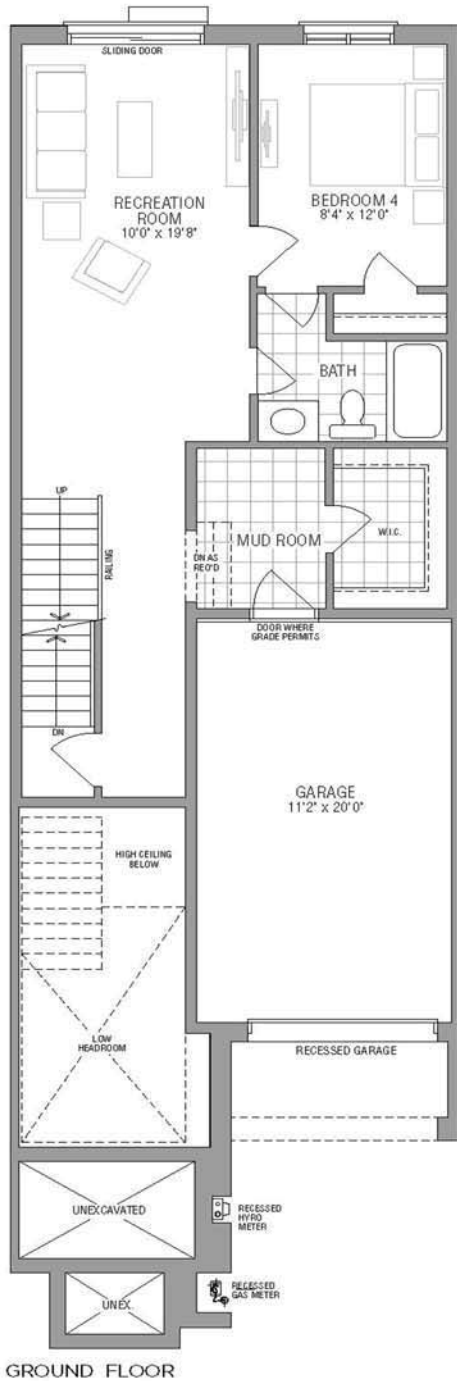
SECOND FLOOR



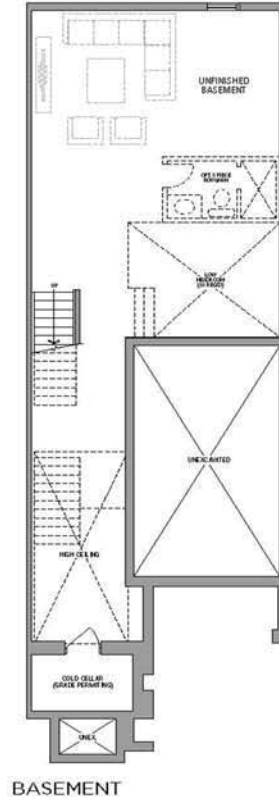
TERRACE/MECH.

Marseille

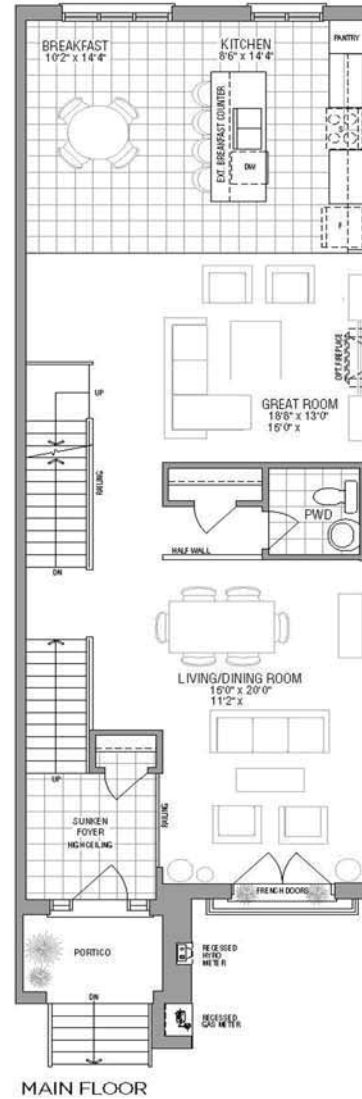
2844 sq ft
Plus 819 sq ft Terrace



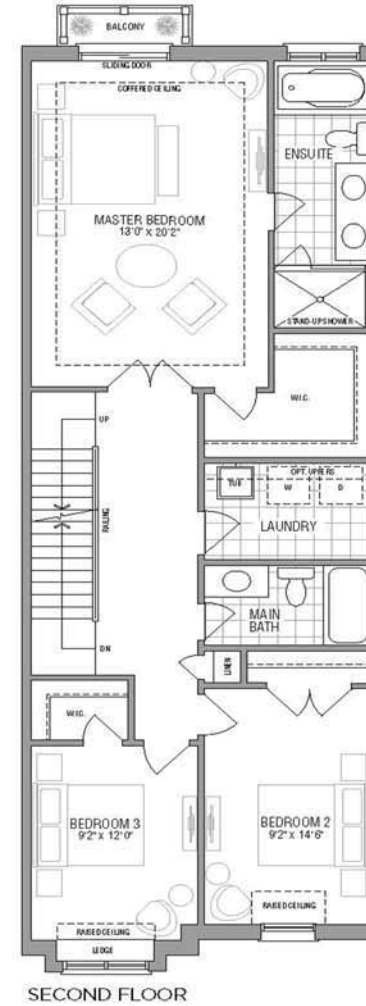
GROUND FLOOR



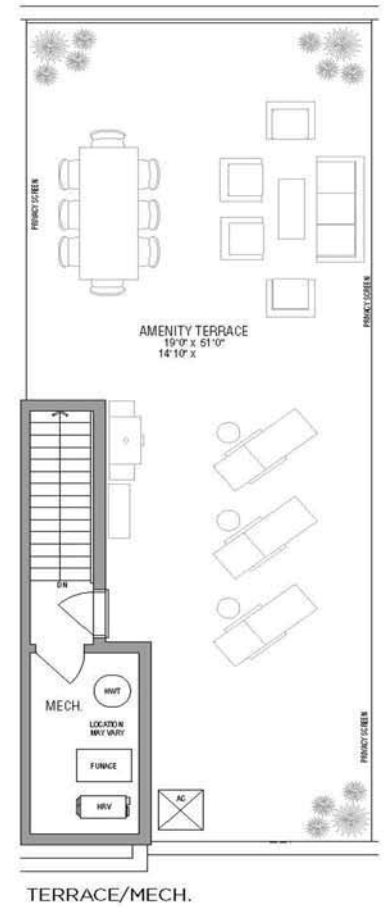
BASEMENT



MAIN FLOOR



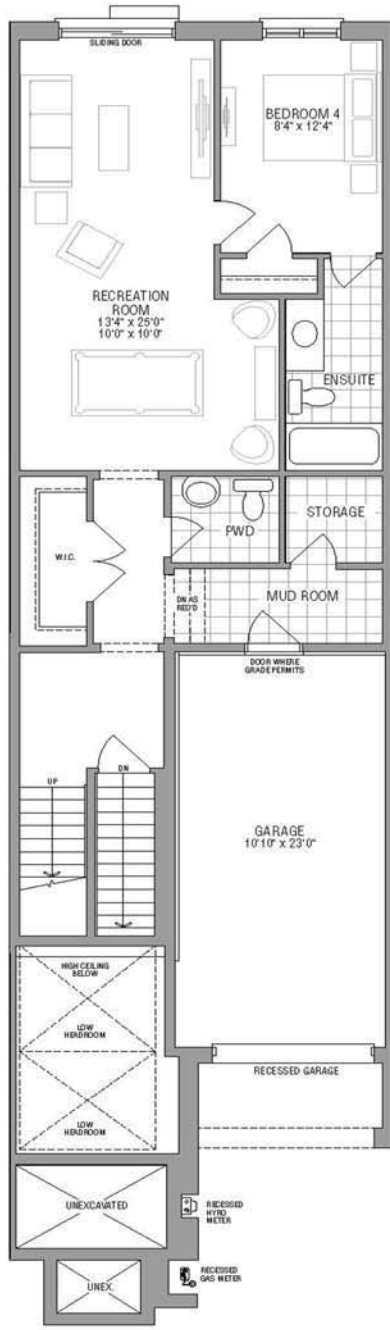
SECOND FLOOR



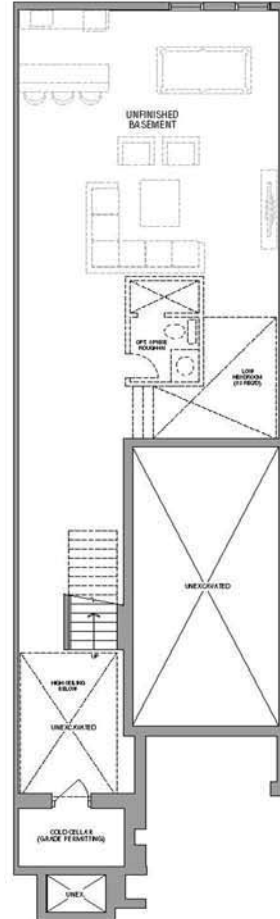
TERRACE/MECH.

Paris

3447 sq ft
Plus 995 sq ft Terrace



GROUND FLOOR



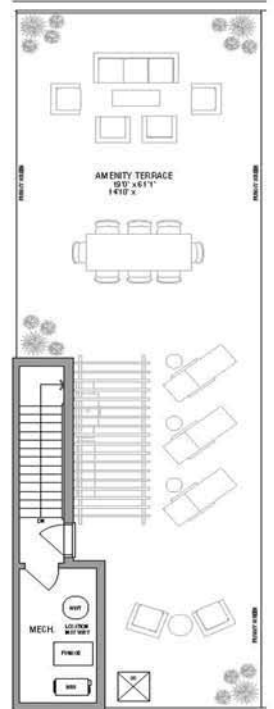
BASEMENT



MAIN FLOOR



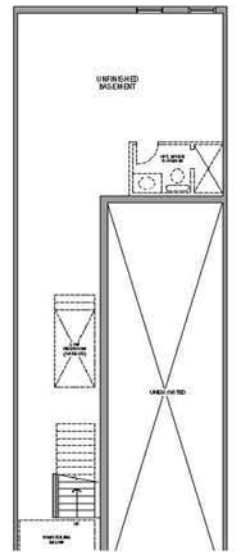
SECOND FLOOR



TERRACE/MECH.



PART. OPT. GROUND PLAN WITH TANDEM GARAGE

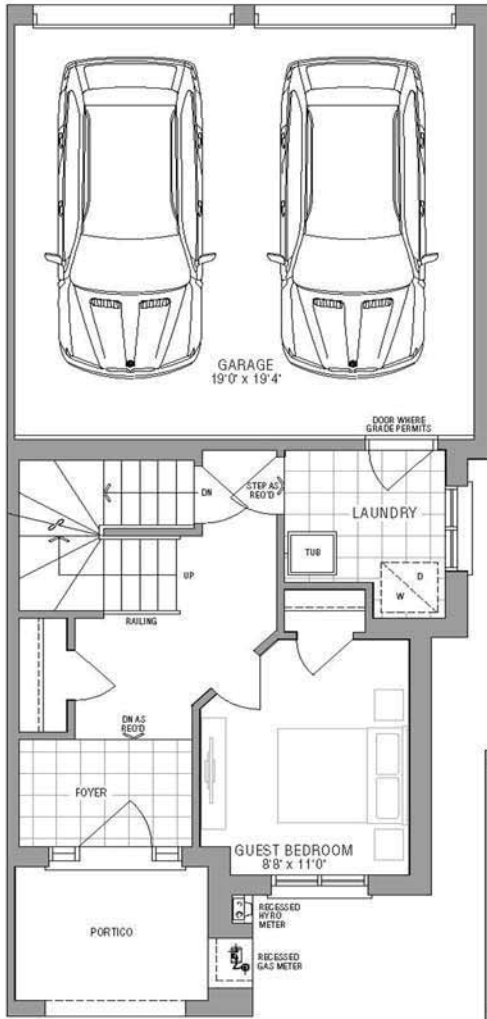


PART. OPT. BASEMENT PLAN WITH TANDEM GARAGE

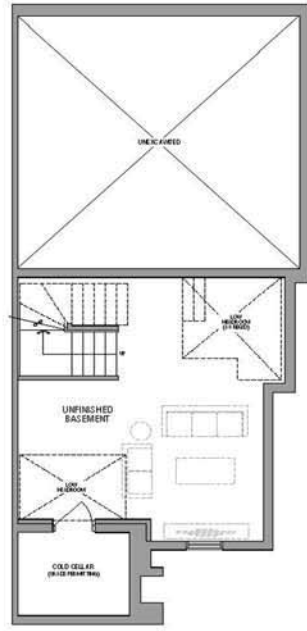
Dijon

1940 sq ft

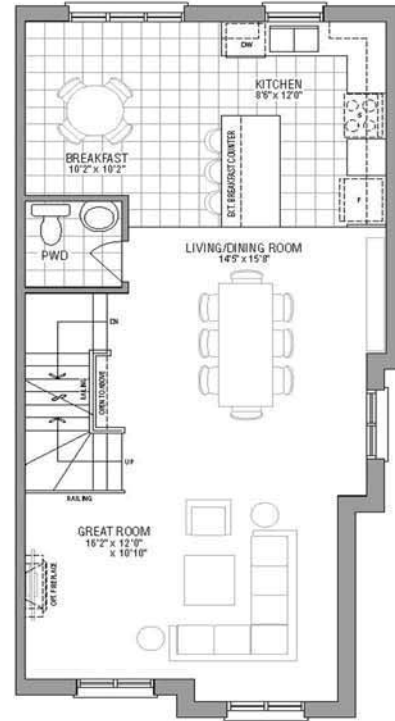
Plus 489 sq ft Terrace



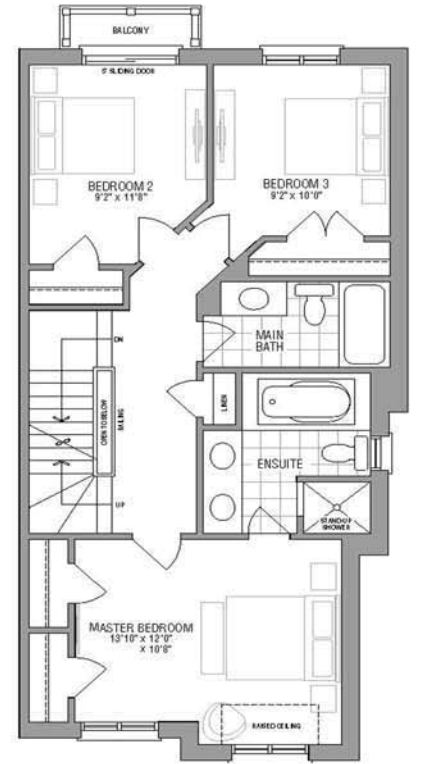
GROUND FLOOR



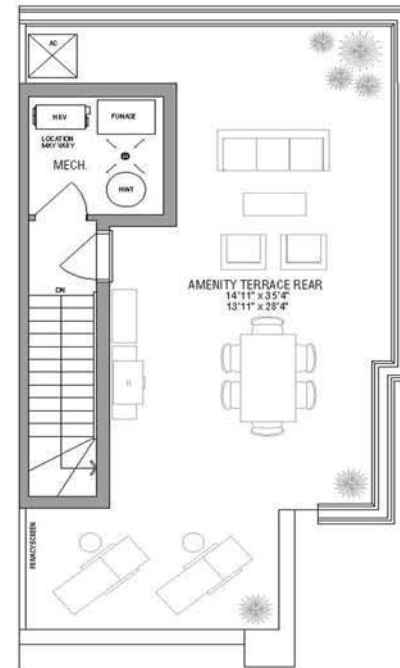
BASEMENT



MAIN FLOOR



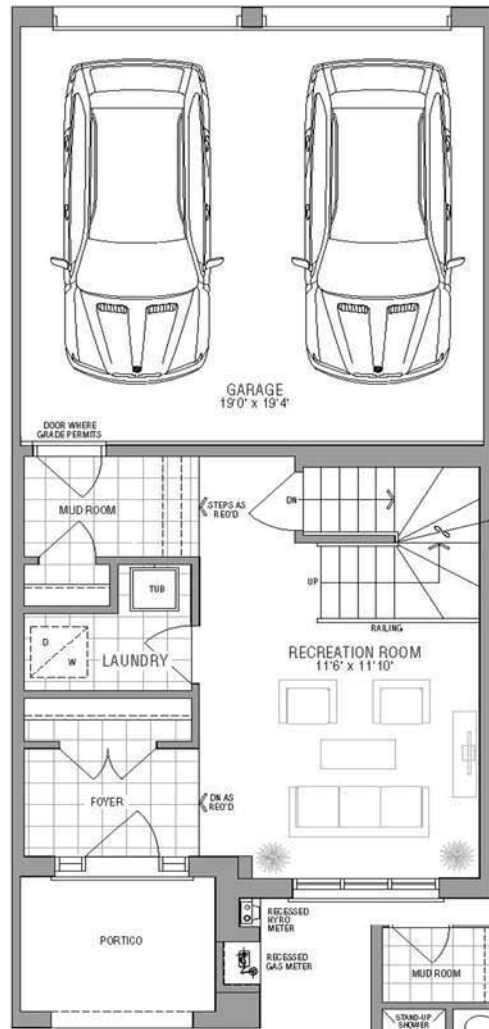
SECOND FLOOR



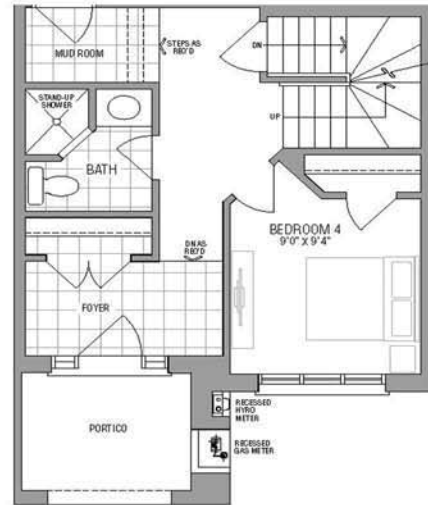
TERRACE/MECH.

Reims

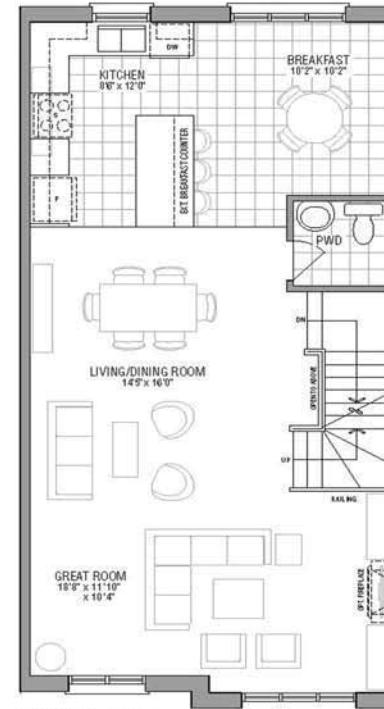
2000 sq ft
Plus 536 sq ft Terrace



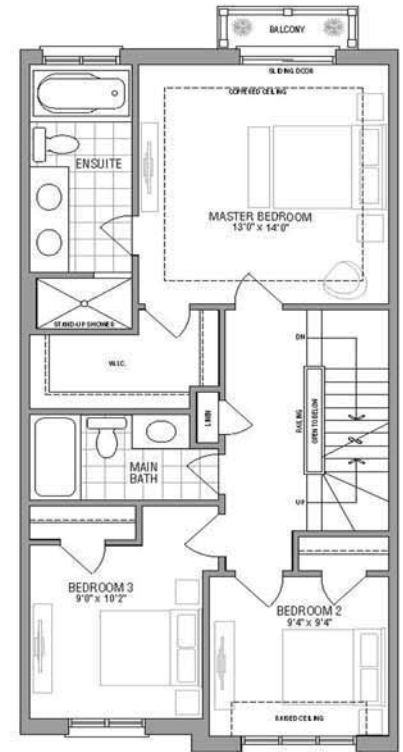
GROUND FLOOR



OPT. GROUND FLOOR



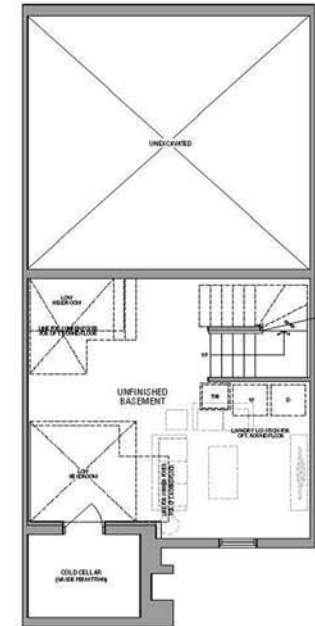
MAIN FLOOR



SECOND FLOOR



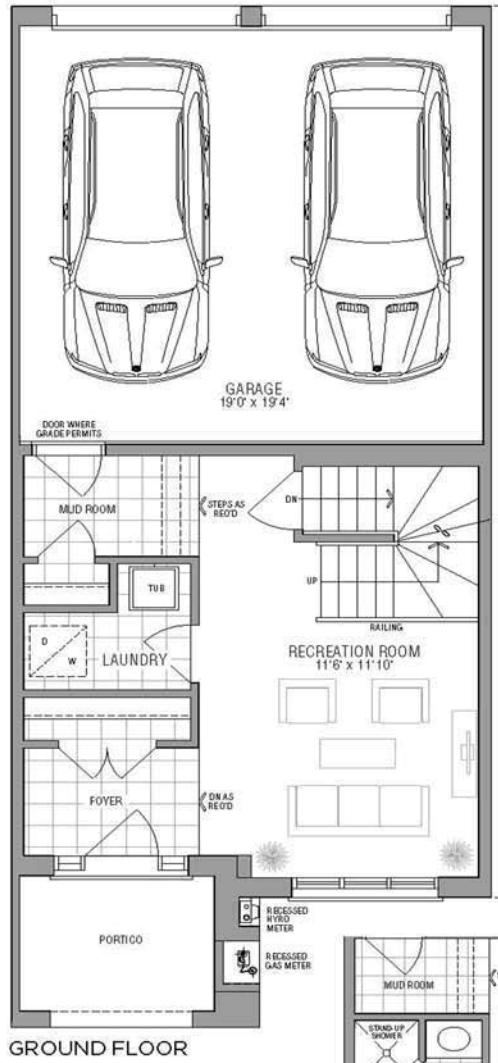
TERRACE/MECH.



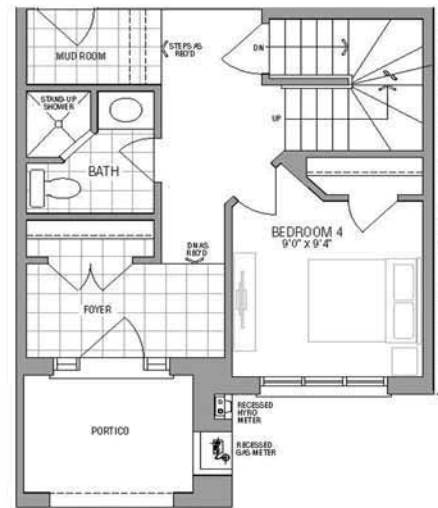
BASEMENT

Lyon Corner

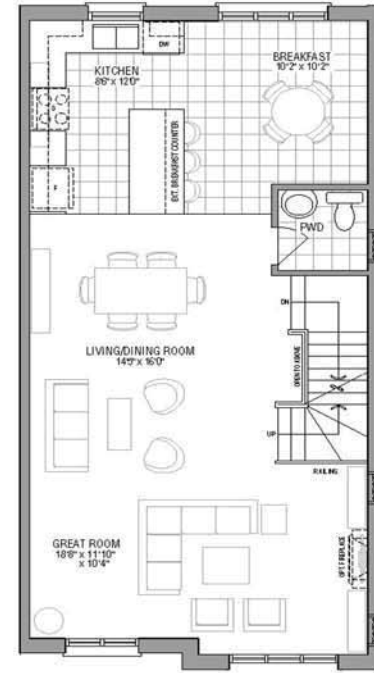
2043 sq ft
Plus 536 sq ft Terrace



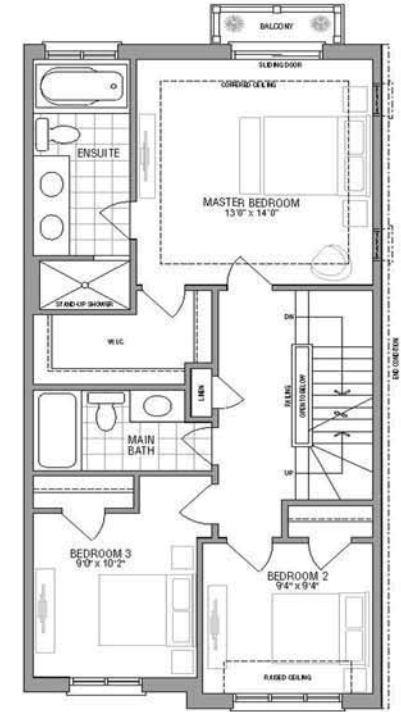
GROUND FLOOR



OPT. GROUND FLOOR



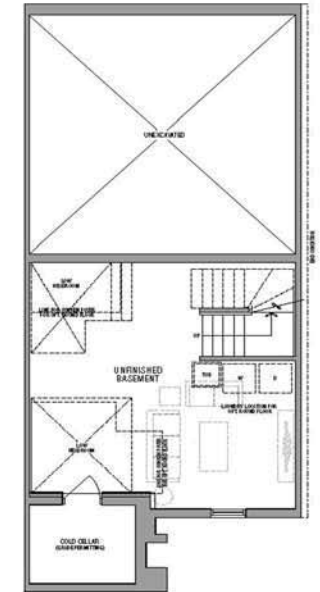
MAIN FLOOR



SECOND FLOOR



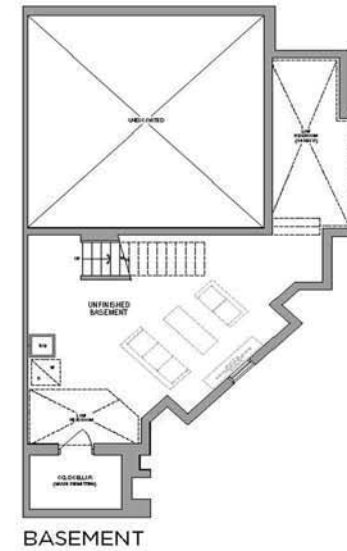
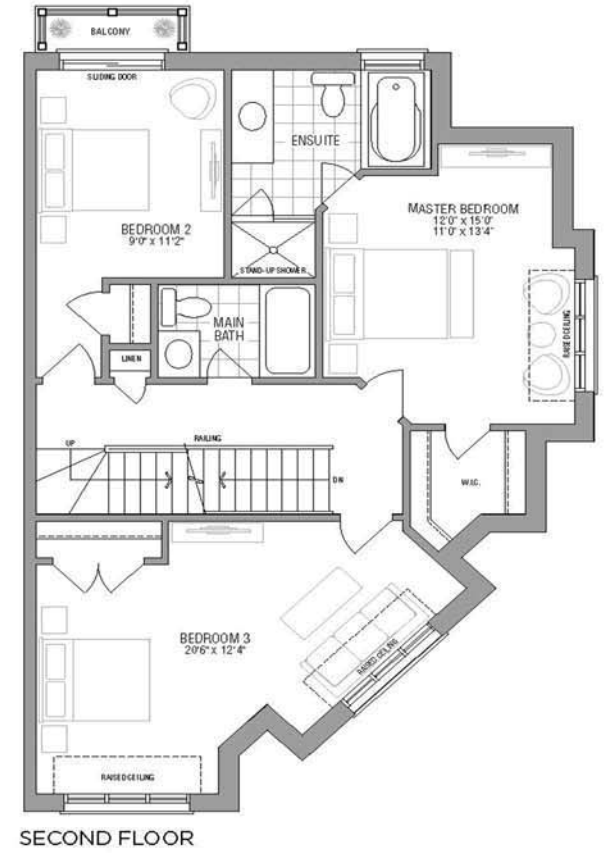
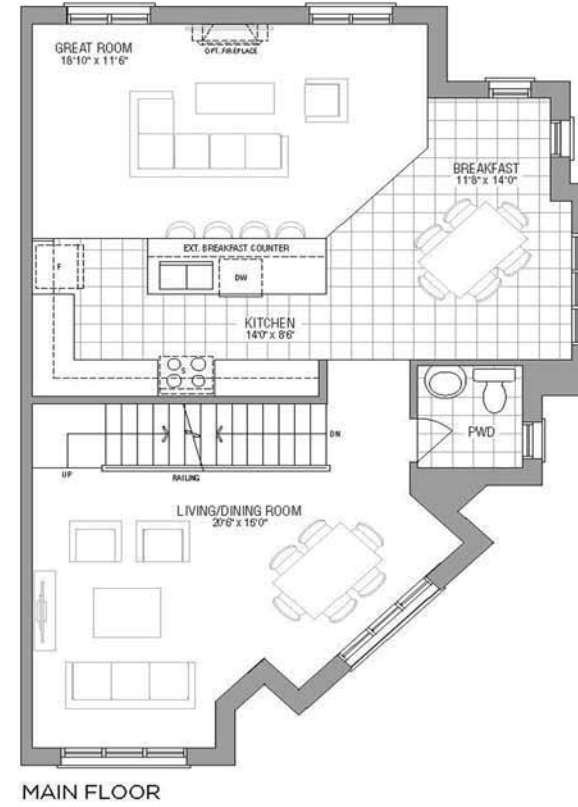
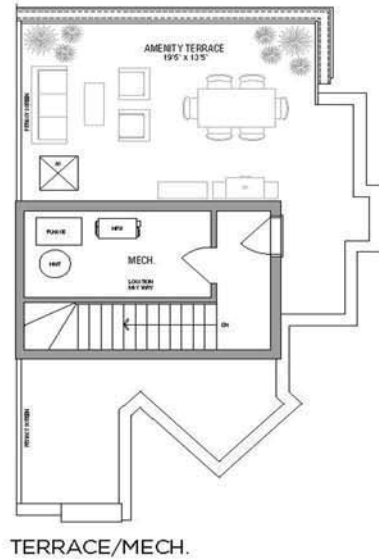
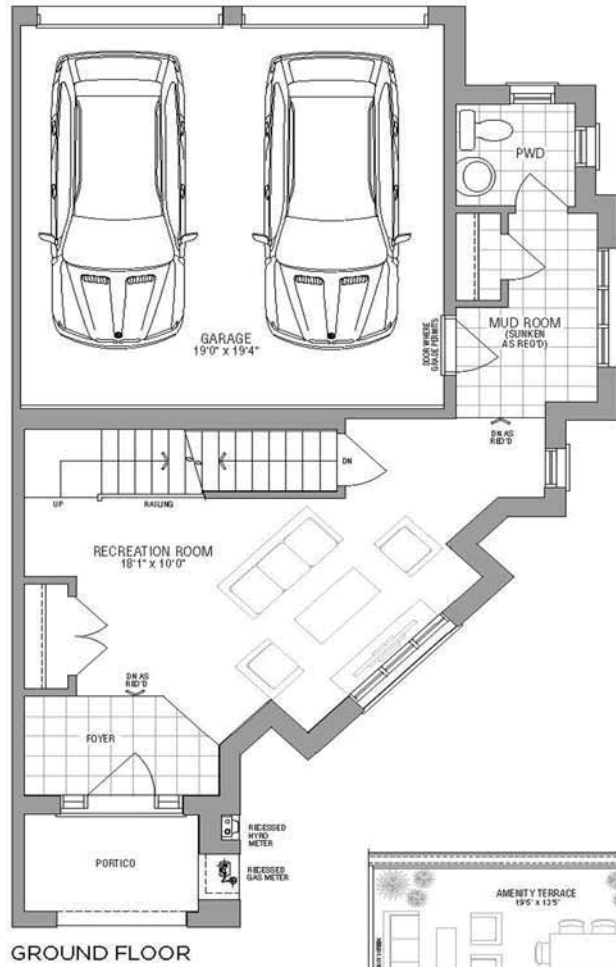
TERRACE/MECH.



BASEMENT

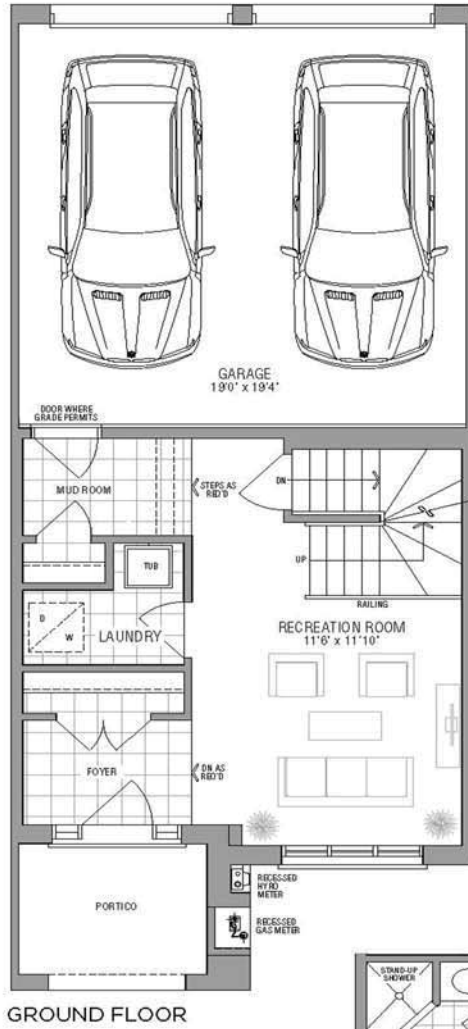
Rennes

2320 sq ft
Plus 311 sq ft Terrace

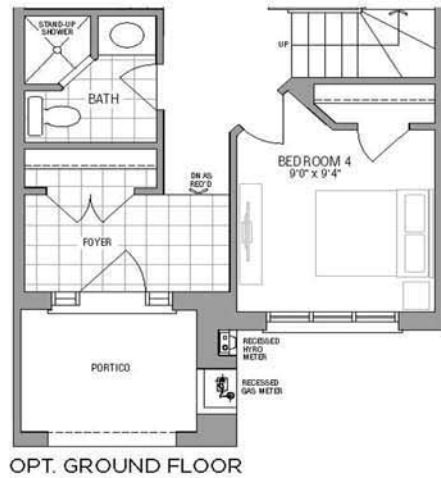


Reims

2000 sq ft
Plus 536 sq ft Terrace



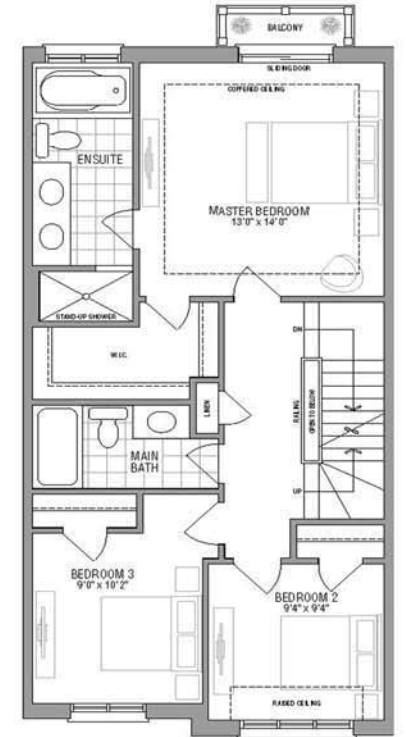
GROUND FLOOR



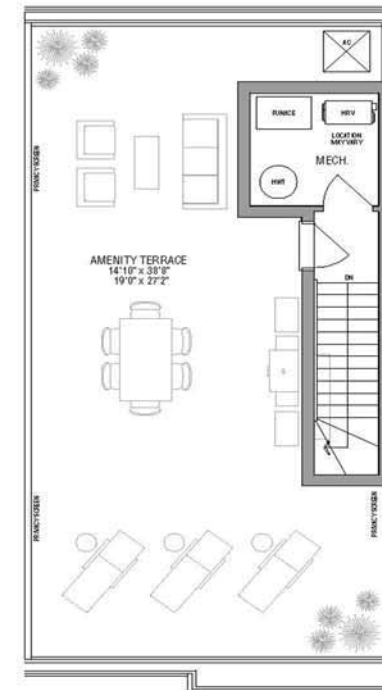
OPT. GROUND FLOOR



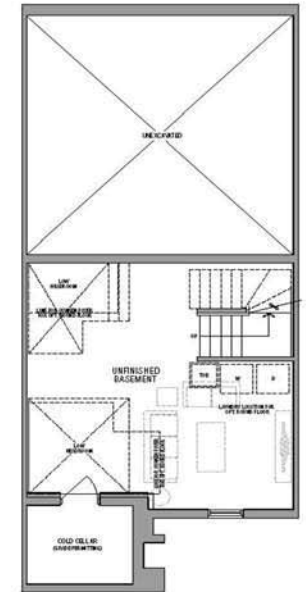
MAIN FLOOR



SECOND FLOOR



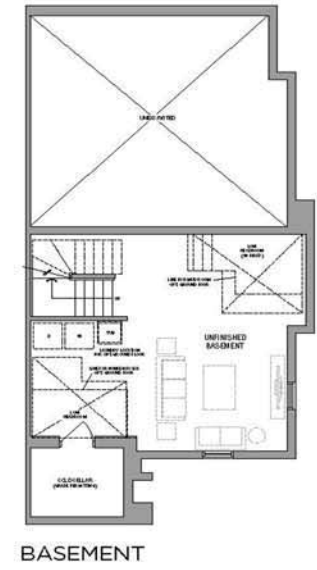
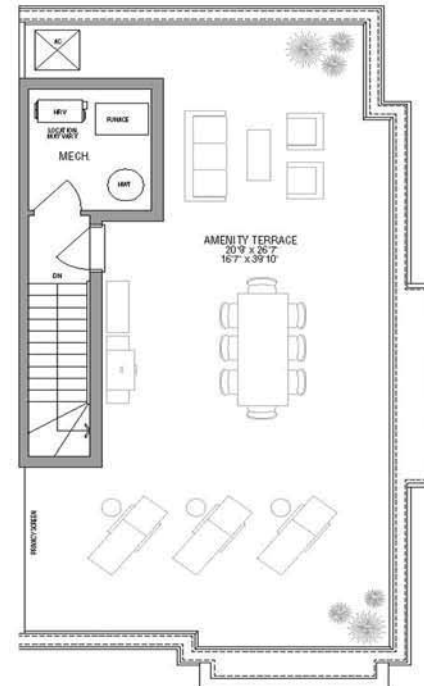
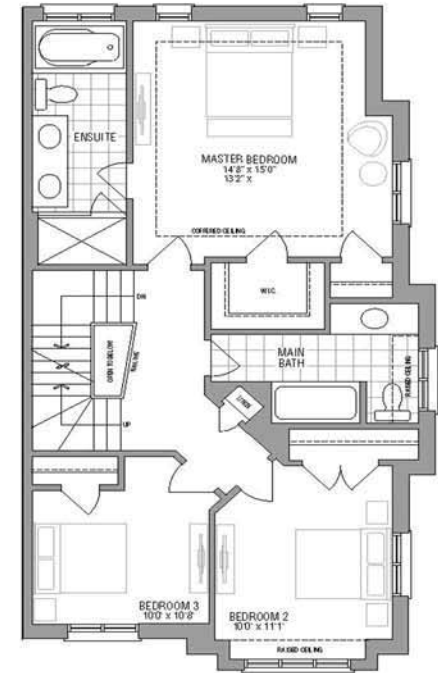
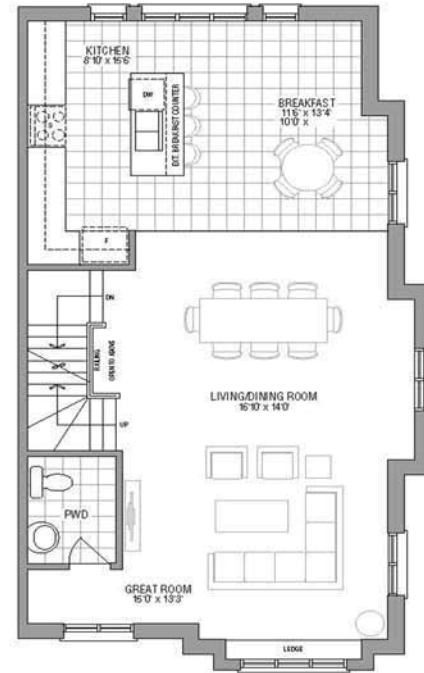
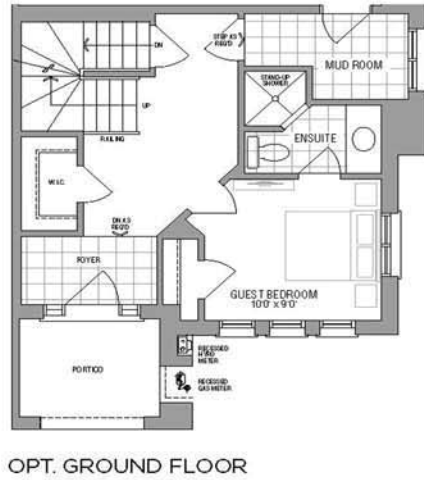
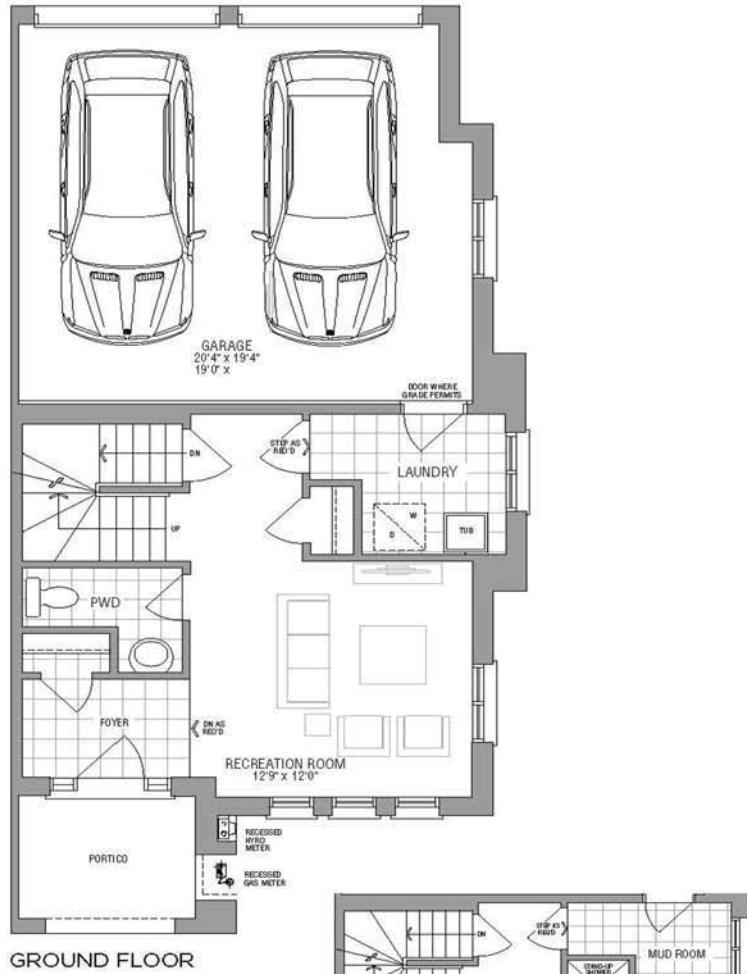
TERRACE/MECH.



BASEMENT

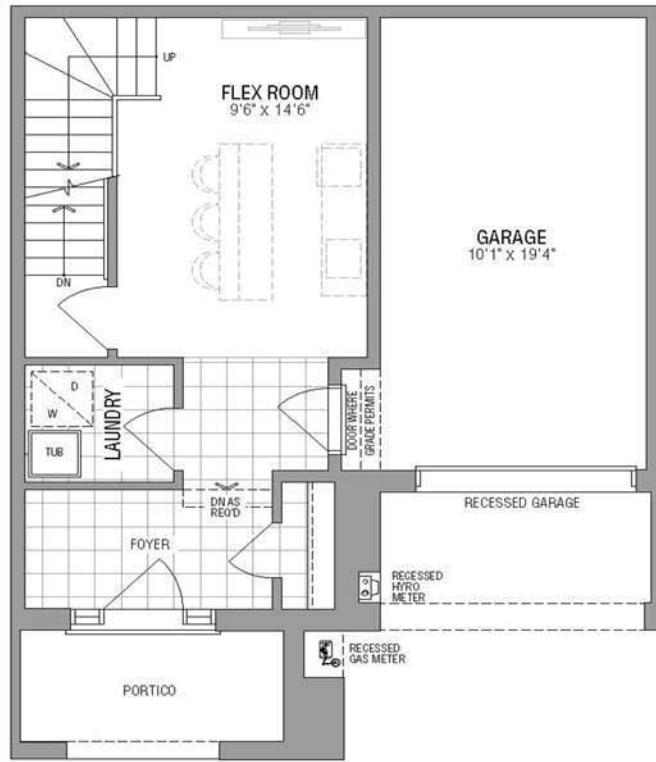
Grenoble

2261 sq ft
Plus 670 sq ft Terrace

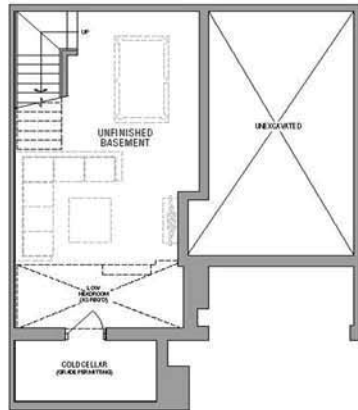


Toulon

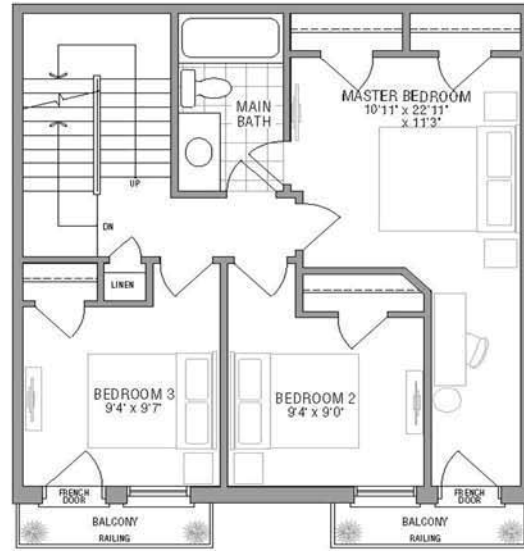
1679 sq ft
Plus 426 sq ft Terrace



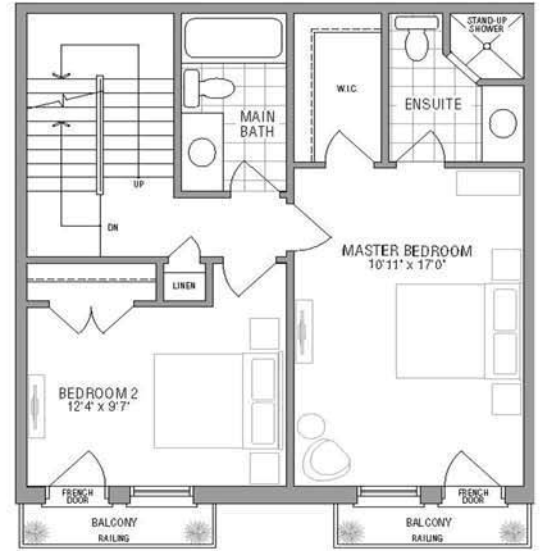
GROUND FLOOR



BASEMENT



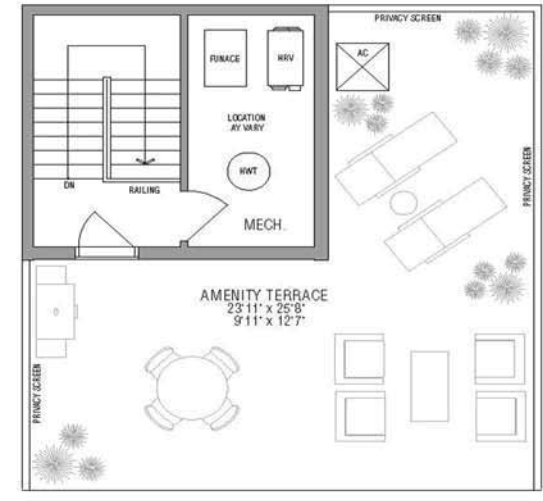
SECOND FLOOR



OPT. SECOND FLOOR



MAIN FLOOR



TERRACE/MECH.

Bordeaux

1881 sq ft
Plus 479 sq ft Terrace

