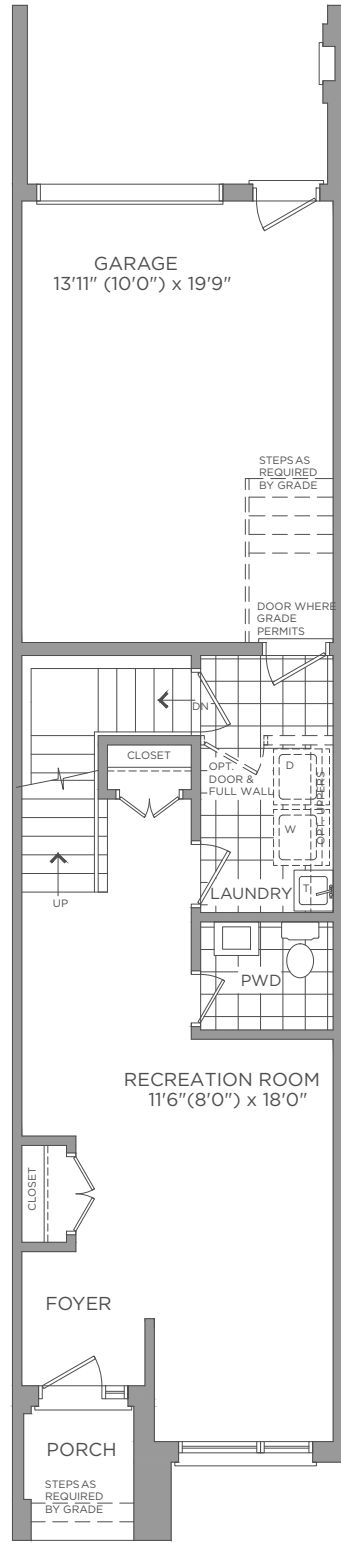
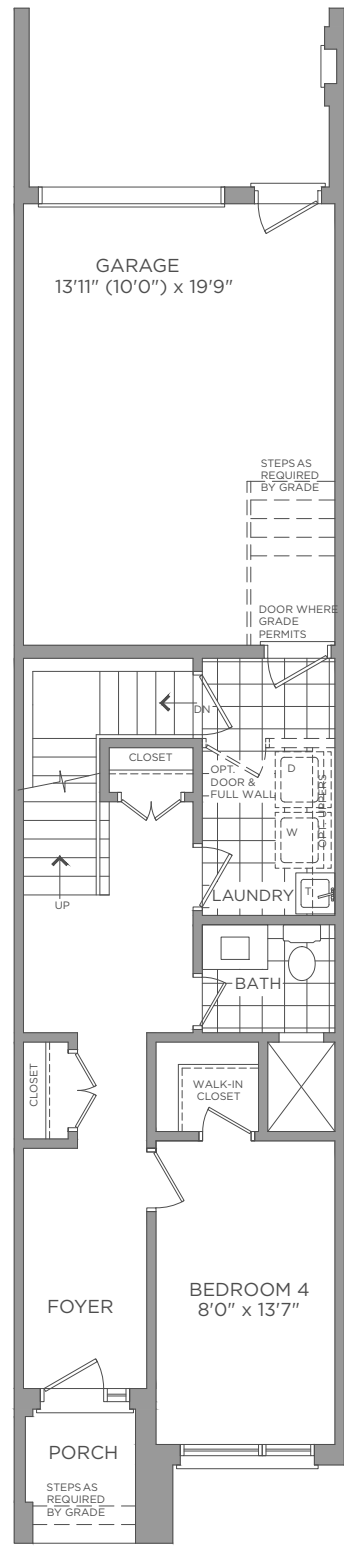


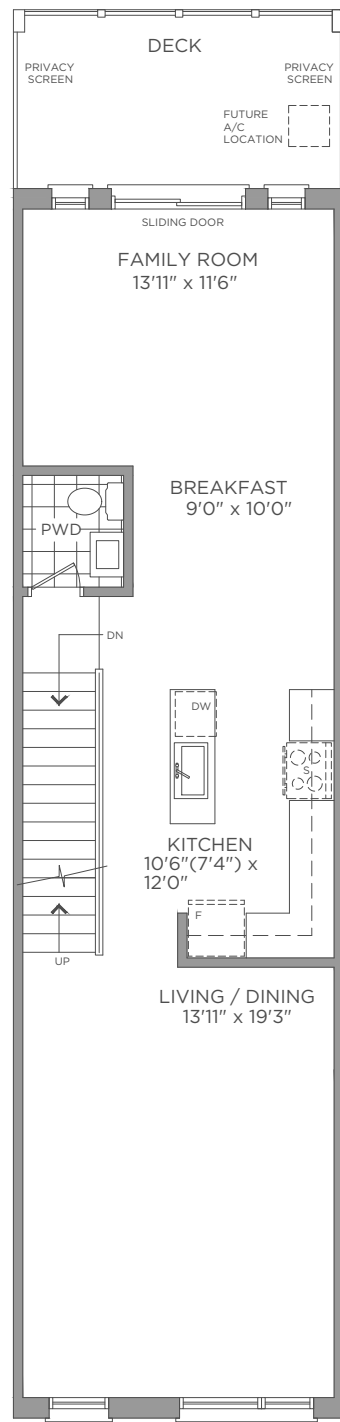
BASEMENT  
ELEVATION A / B / B2



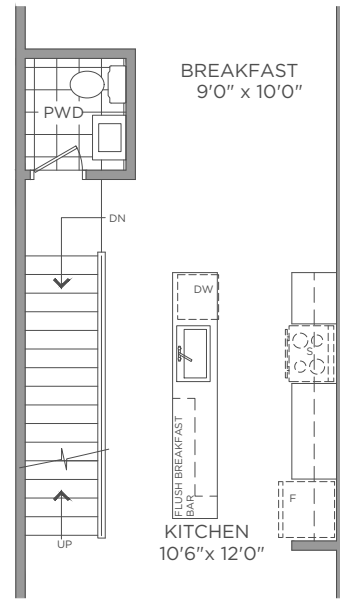
FIRST FLOOR  
ELEVATION A / B / B2



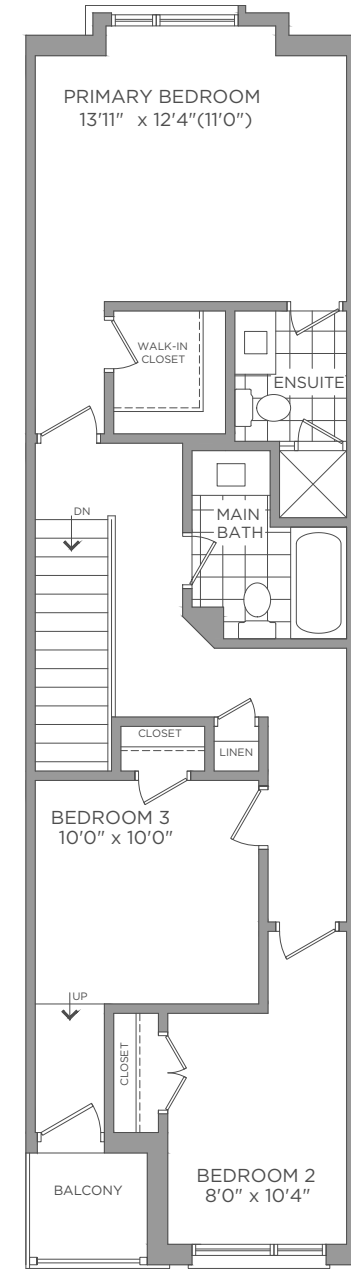
OPT. FIRST FLOOR  
ELEVATION A / B / B2



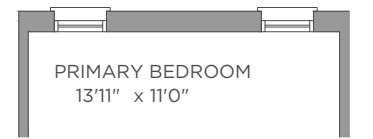
SECOND FLOOR  
ELEVATION A / B / B2



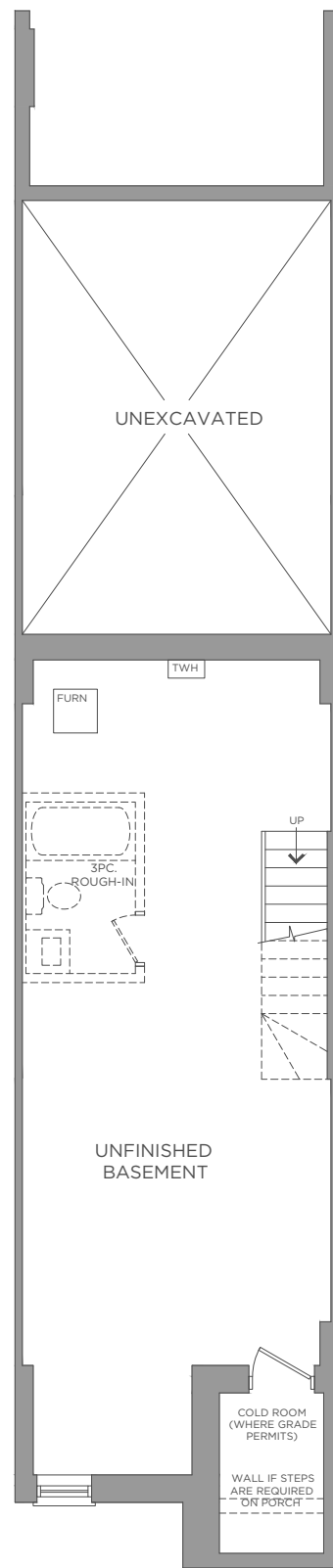
SECOND FLOOR  
OPT. KITCHEN



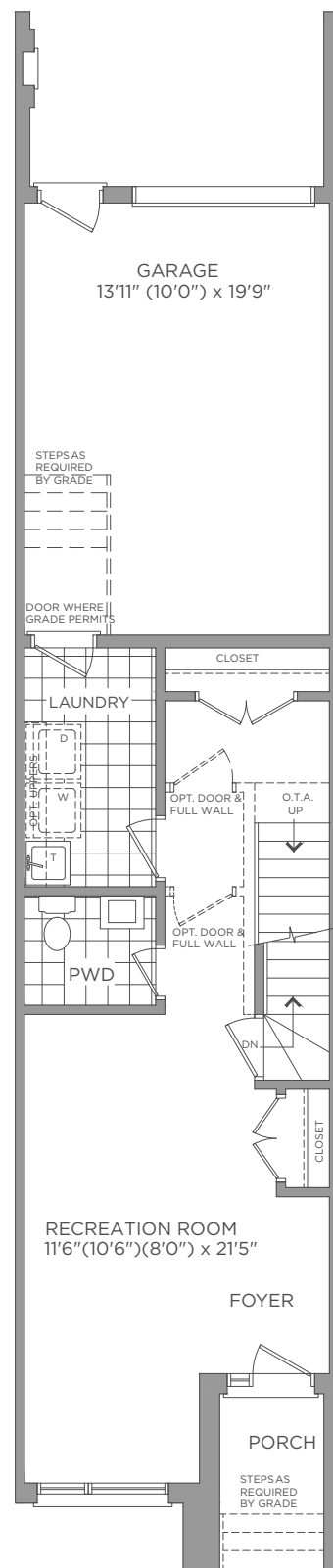
THIRD FLOOR  
ELEVATION A / B / B2



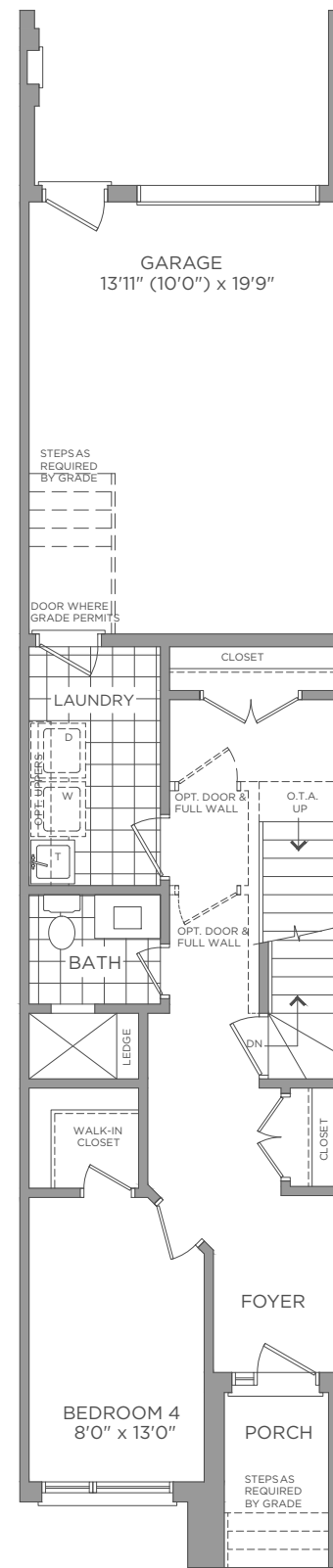
THIRD FLOOR  
REAR ELEVATION B2



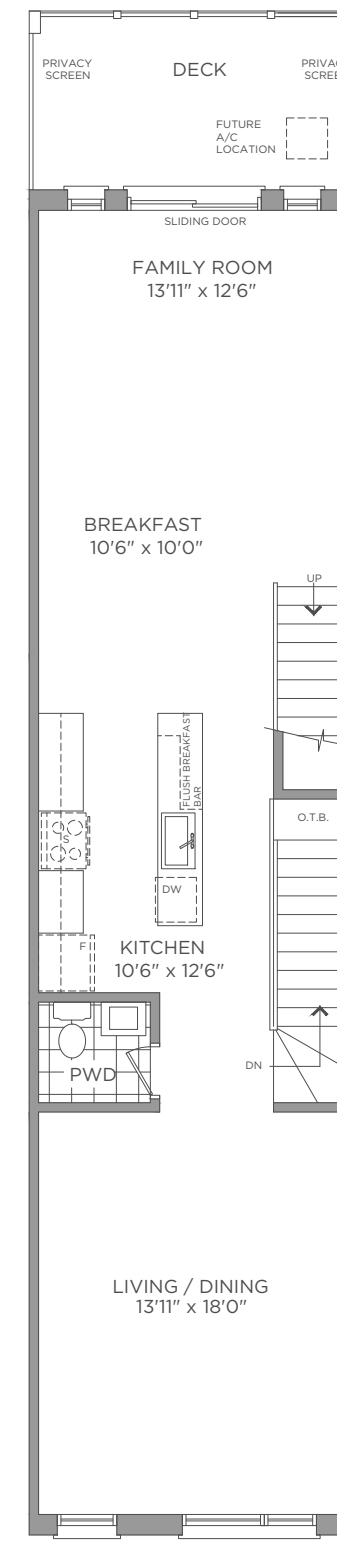
BASEMENT  
ELEVATION A / B



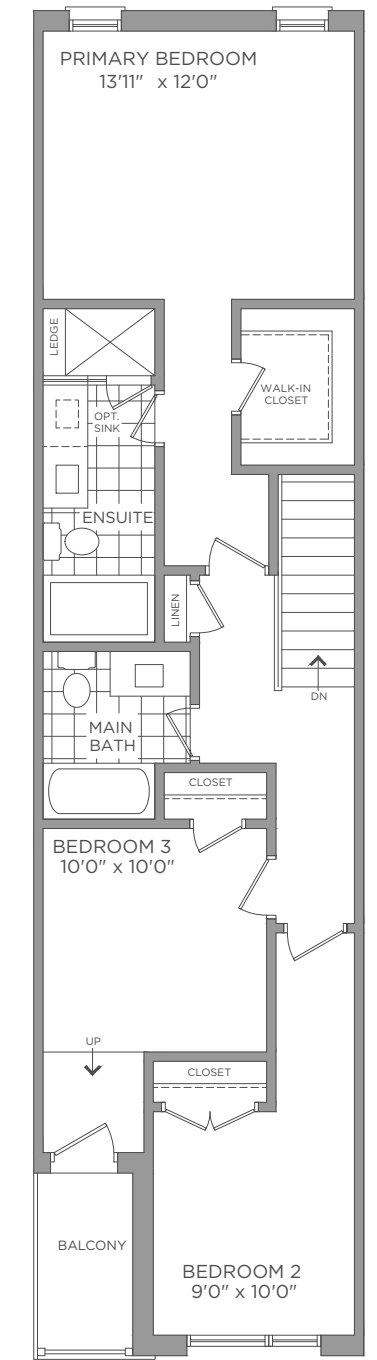
FIRST FLOOR  
ELEVATION A / B



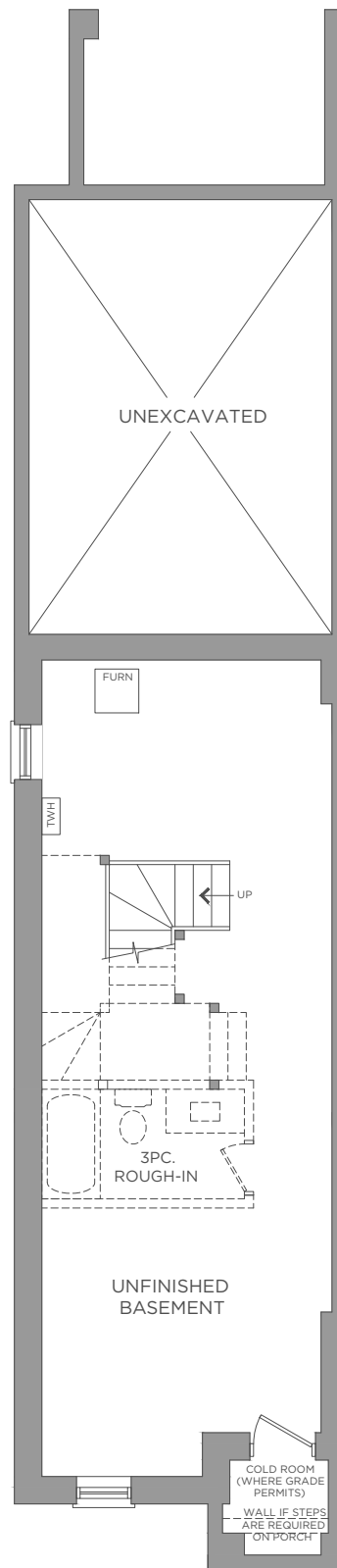
OPT. FIRST FLOOR  
ELEVATION A / B



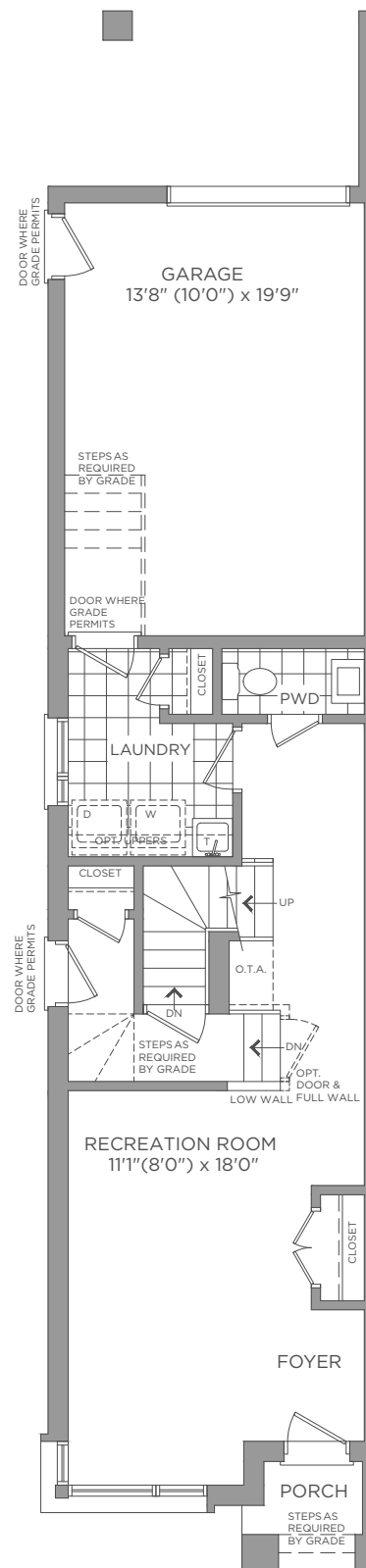
SECOND FLOOR  
ELEVATION A / B



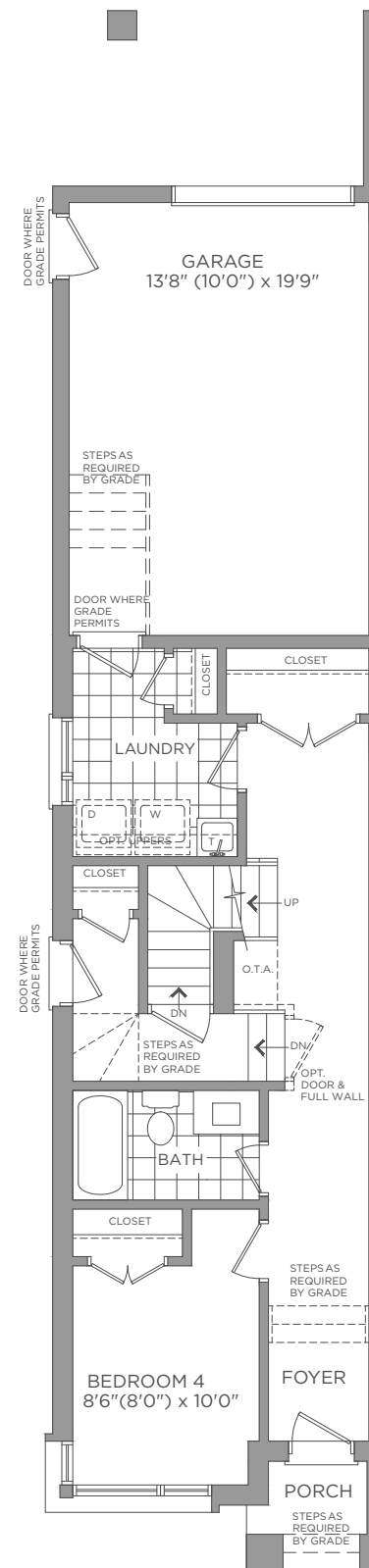
THIRD FLOOR  
ELEVATION A / B



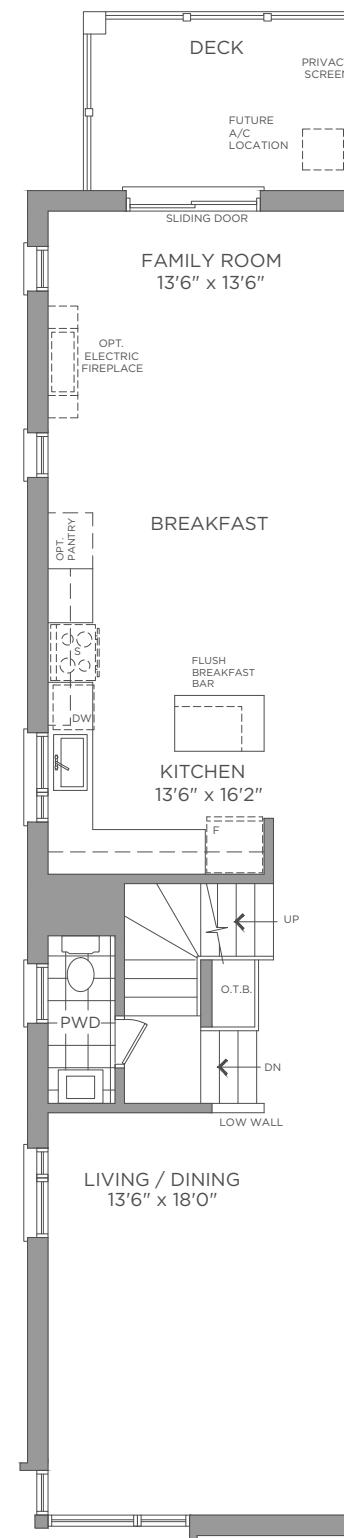
BASEMENT ELEVATION A / B



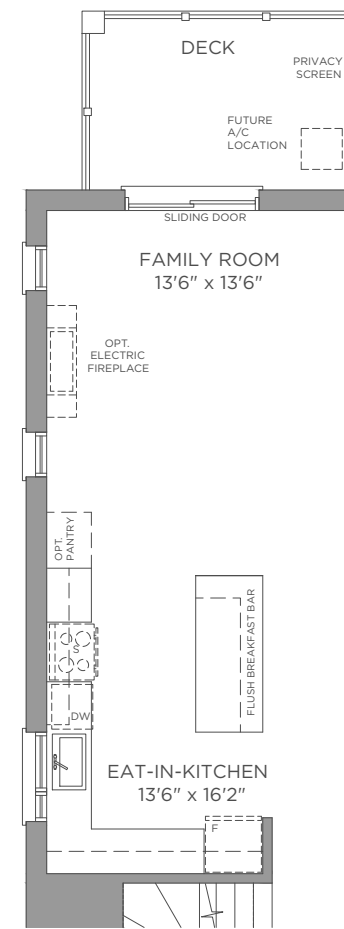
FIRST FLOOR ELEVATION A / B



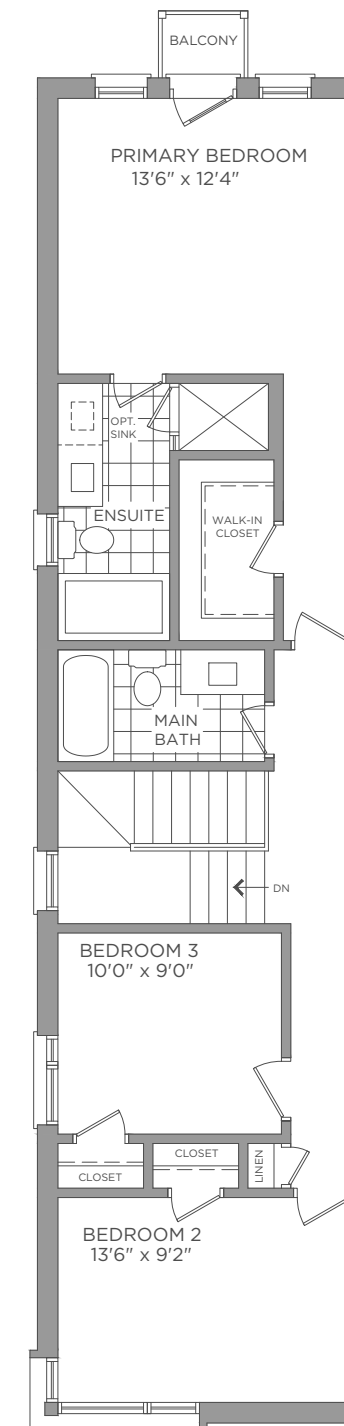
OPT. FIRST FLOOR ELEVATION A / B



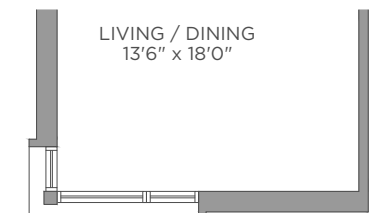
SECOND FLOOR ELEVATION A



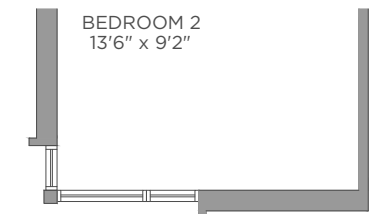
SECOND FLOOR OPT. KITCHEN



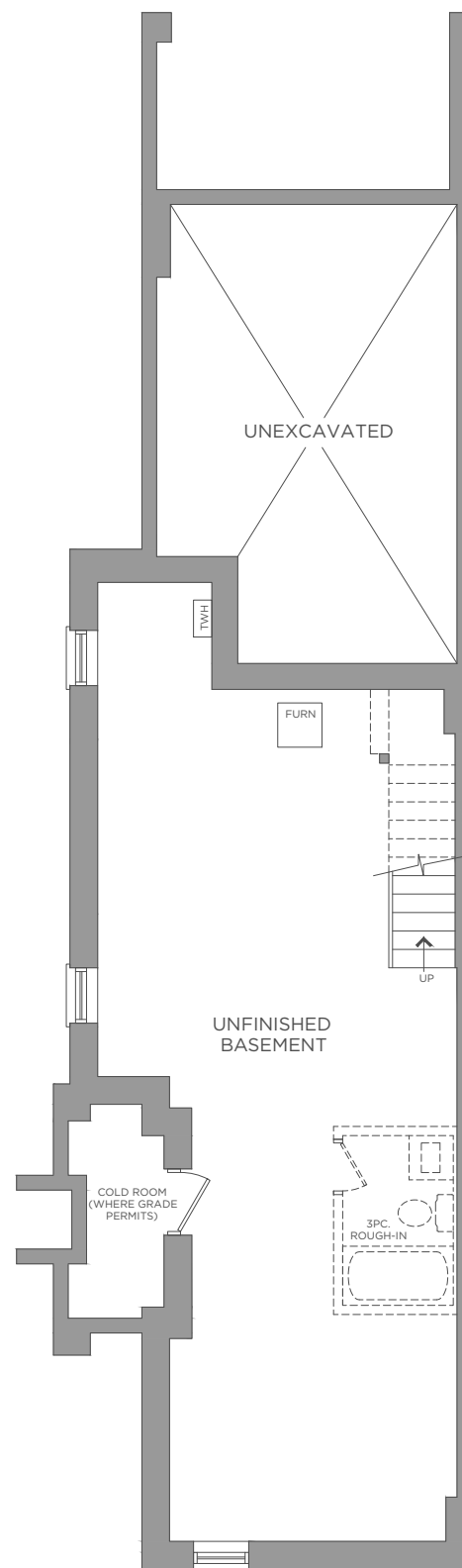
THIRD FLOOR ELEVATION A



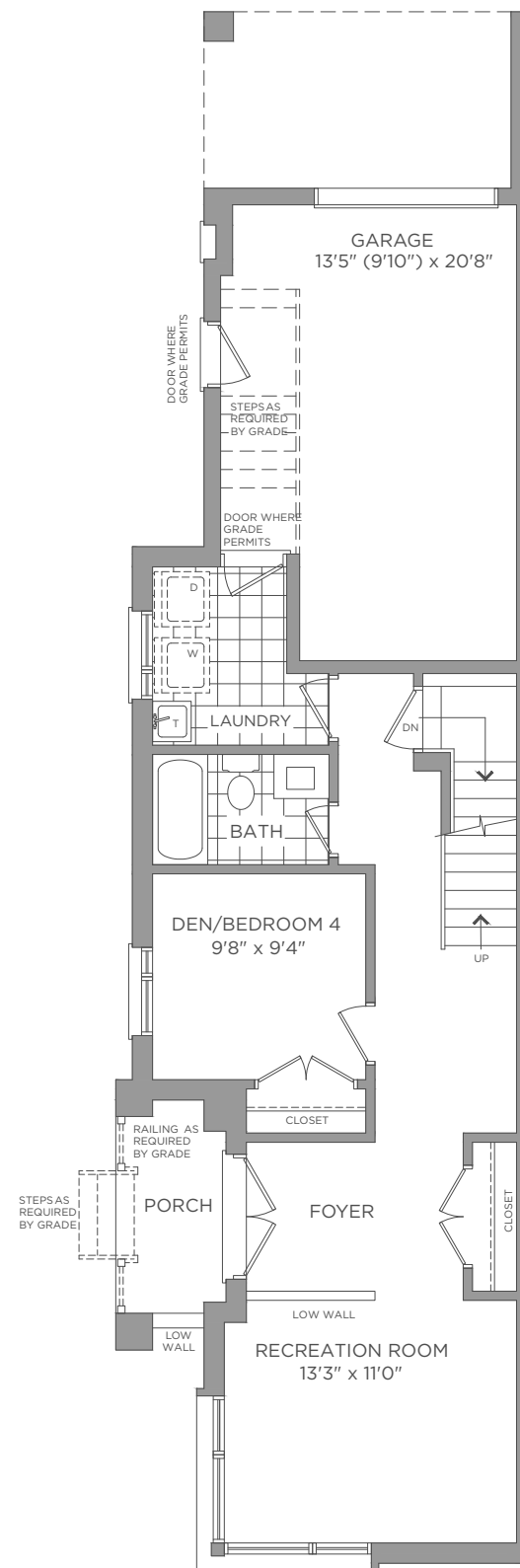
THIRD FLOOR ELEVATION B



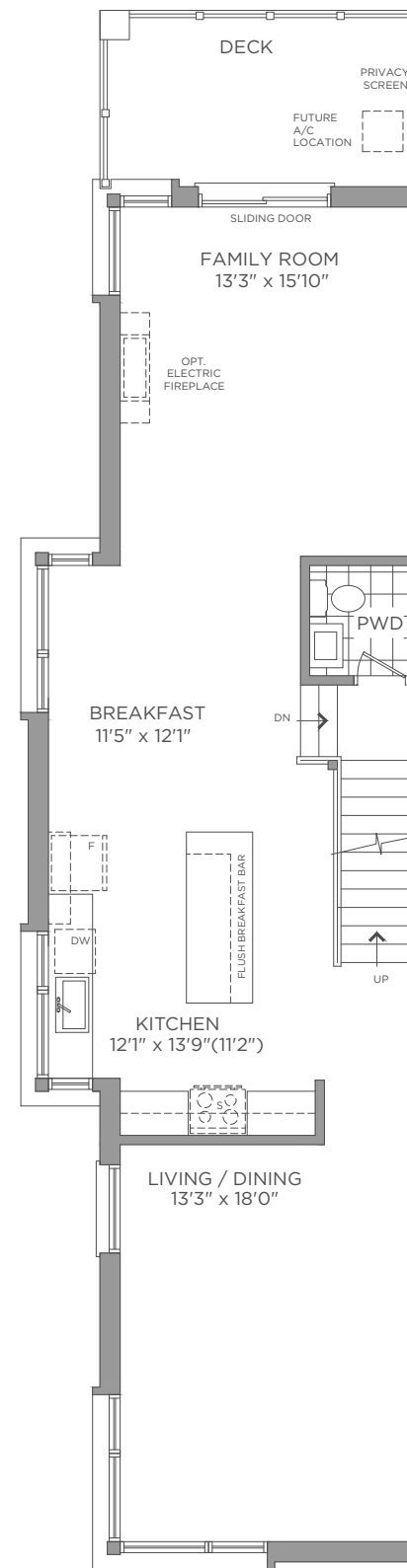
THIRD FLOOR ELEVATION B



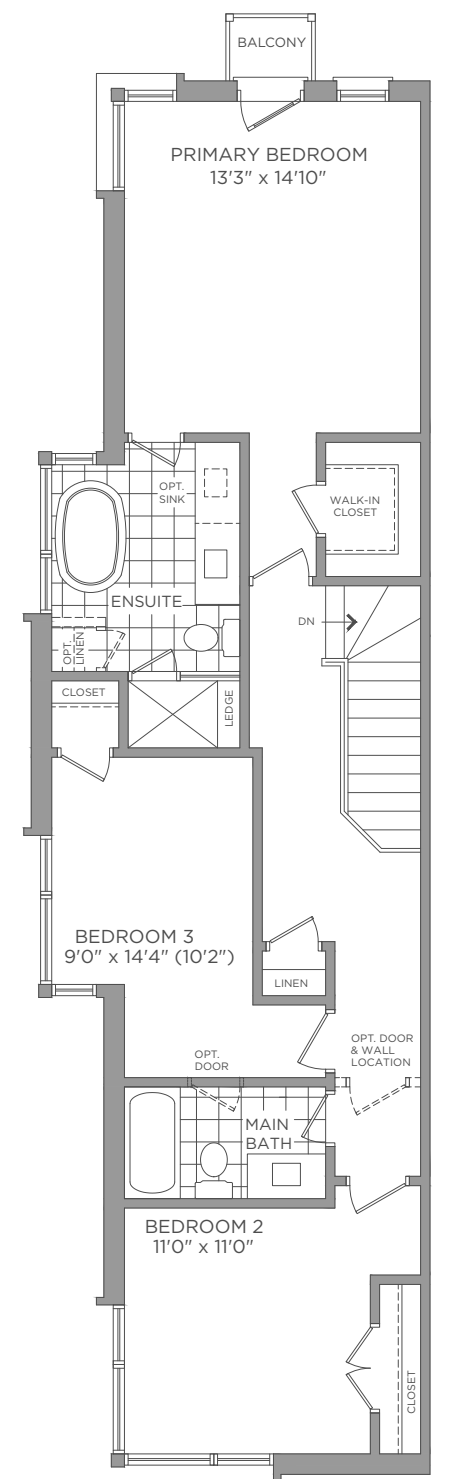
BASEMENT  
ELEVATION B



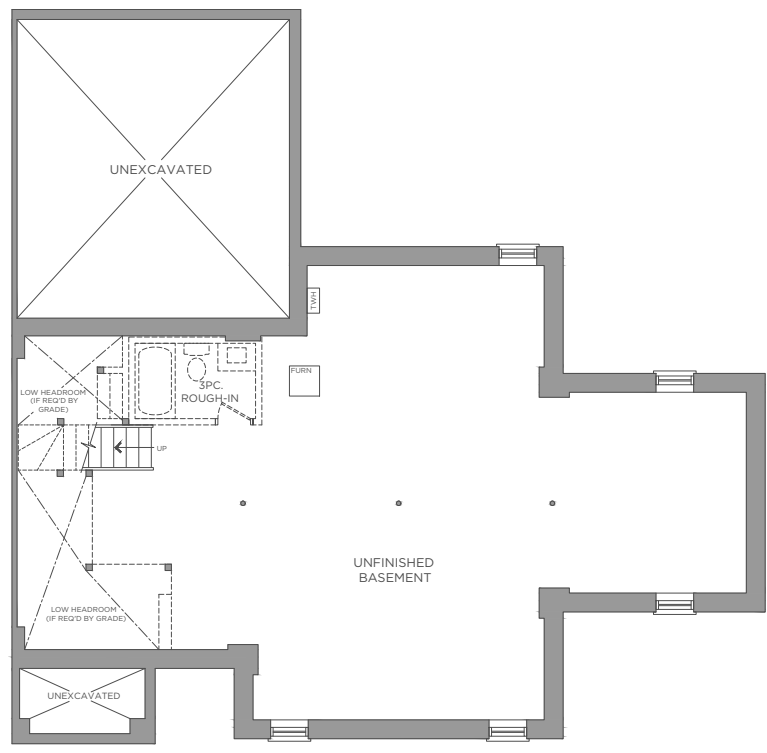
FIRST FLOOR  
ELEVATION B



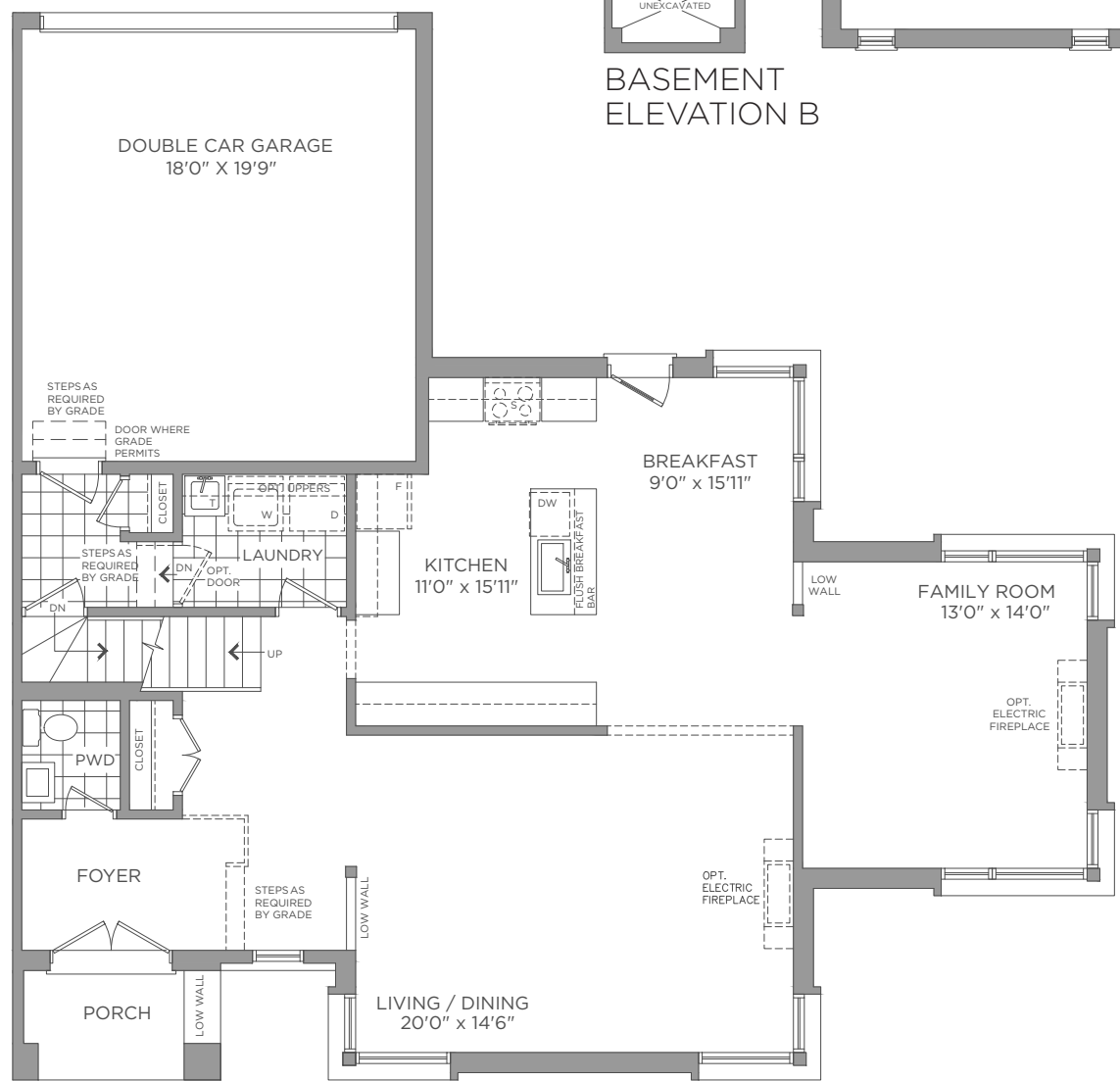
SECOND FLOOR  
ELEVATION B



THIRD FLOOR  
ELEVATION B



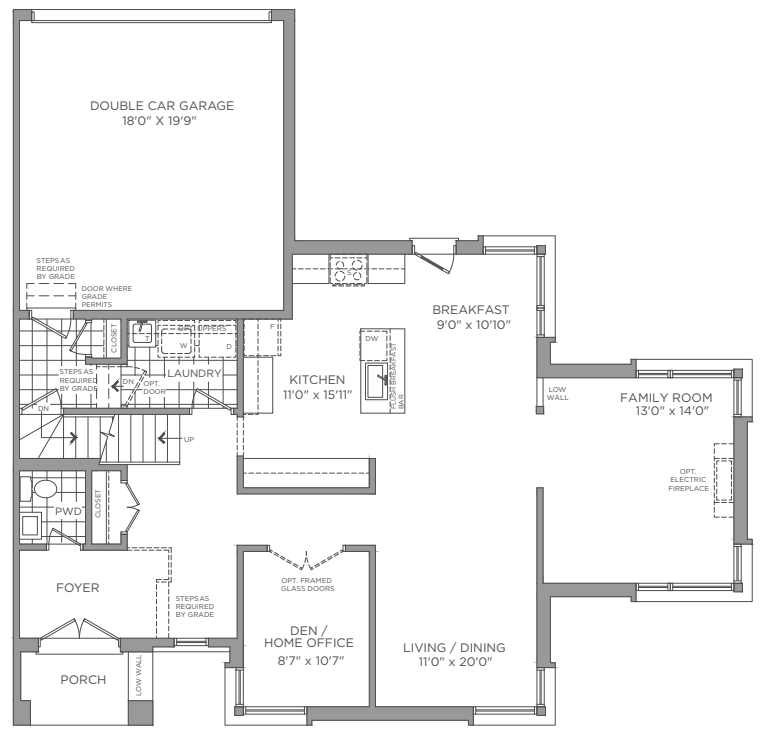
BASEMENT ELEVATION B



FIRST FLOOR ELEVATION B



SECOND FLOOR ELEVATION B



OPT. FIRST FLOOR ELEVATION B

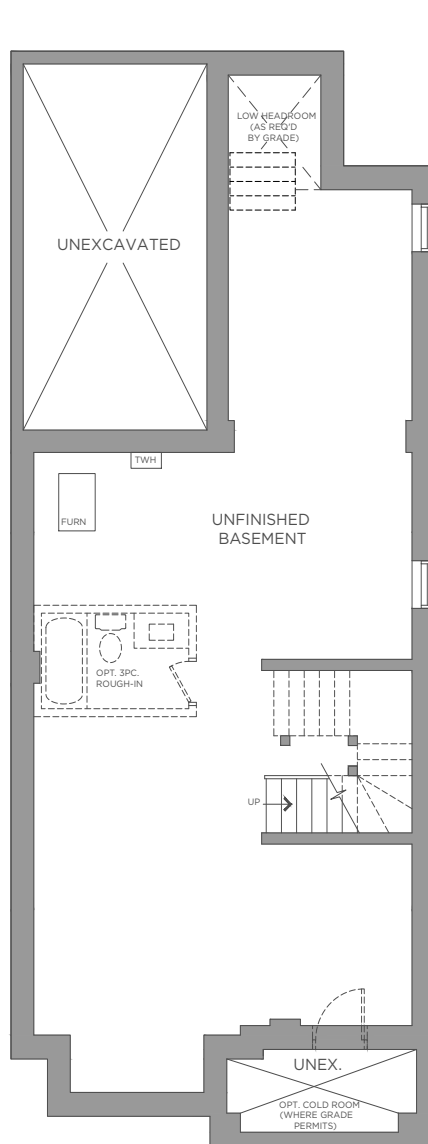
# NAPA VALLEY

END UNIT

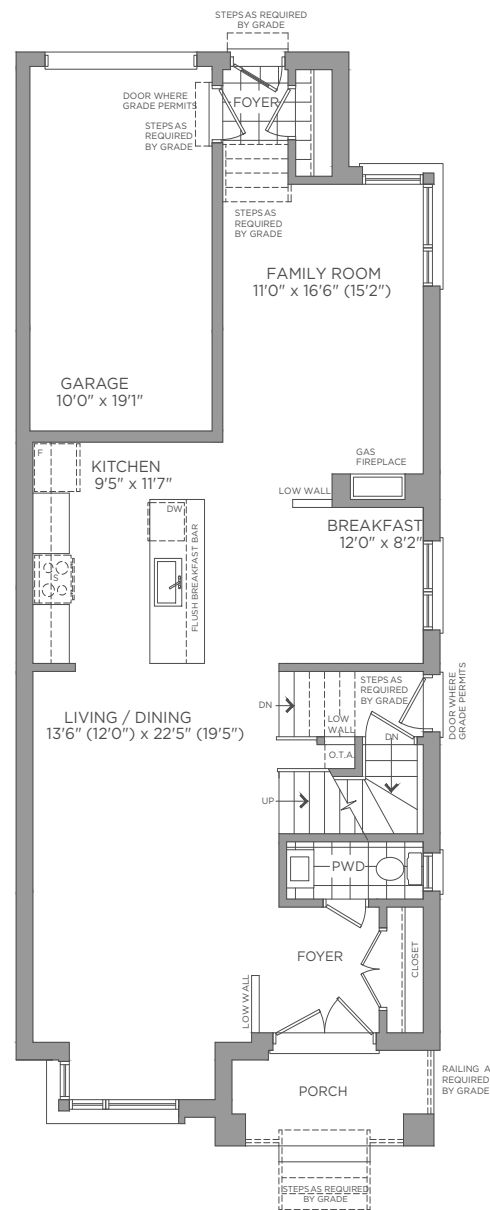
2,703 SQ.FT.



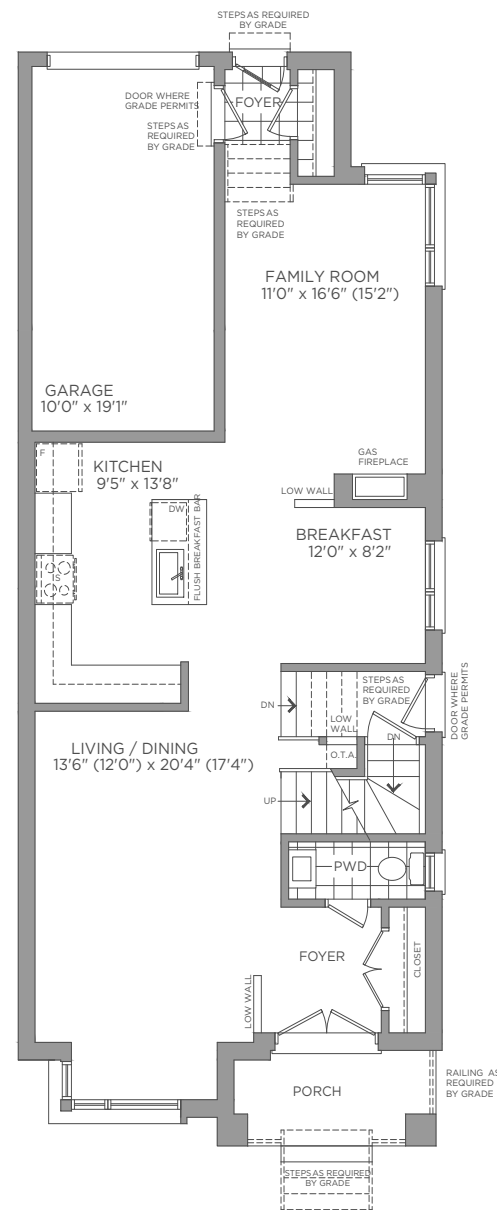
Dimensions, materials, specifications, structural elements and floorplans are subject to change without notice. Actual usable floor space may vary from the stated floor area. Layout shown may be the reverse of the unit purchased. Exterior elevation and site plan are subject to approval by applicable authorities and the purchaser agrees to accept any change. The size and location of windows, mullions, exterior doors, furnaces, HVAC Units, patios and/or balconies are subject to change and may vary depending on unit location within the project. All illustrations are artist's concept only. E. & O. E., March 2022



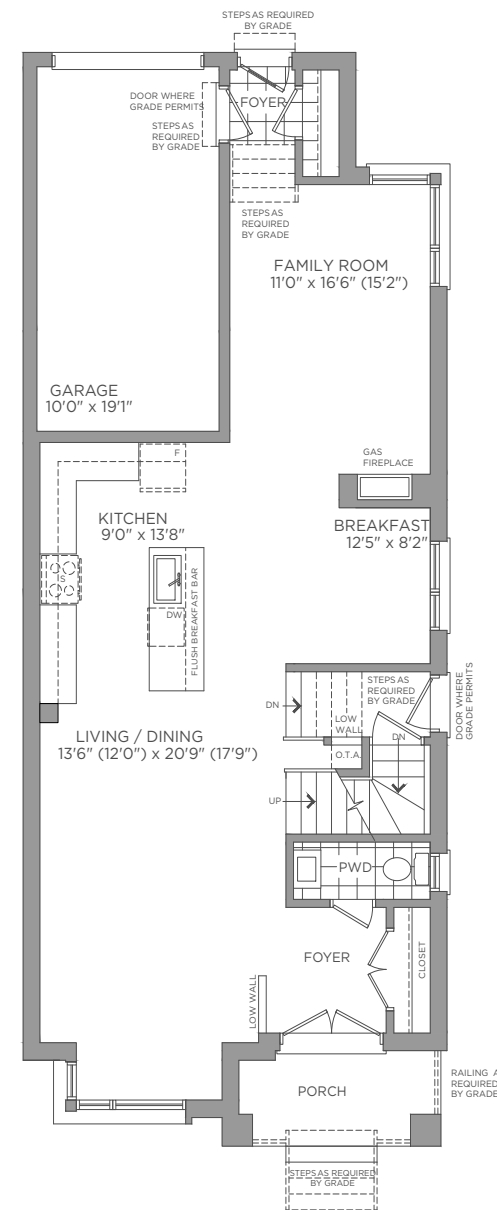
BASEMENT ELEVATION A / B



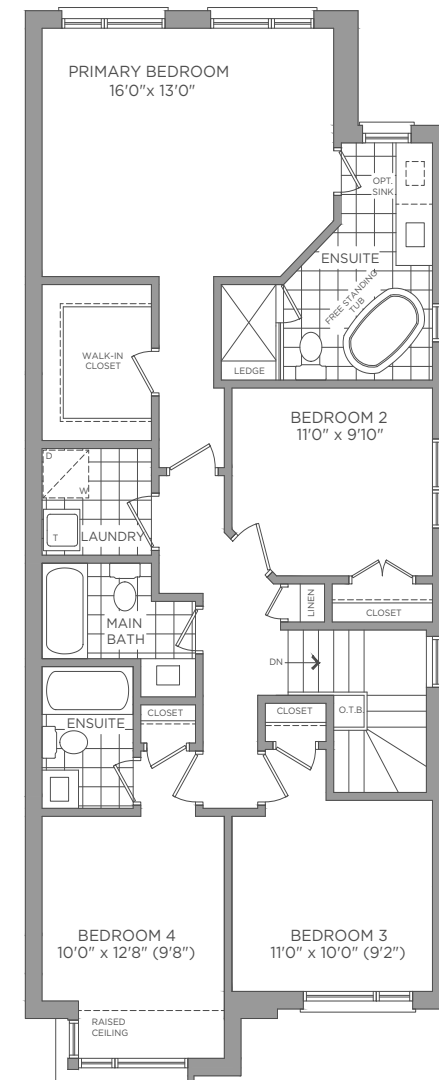
FIRST FLOOR ELEVATION A



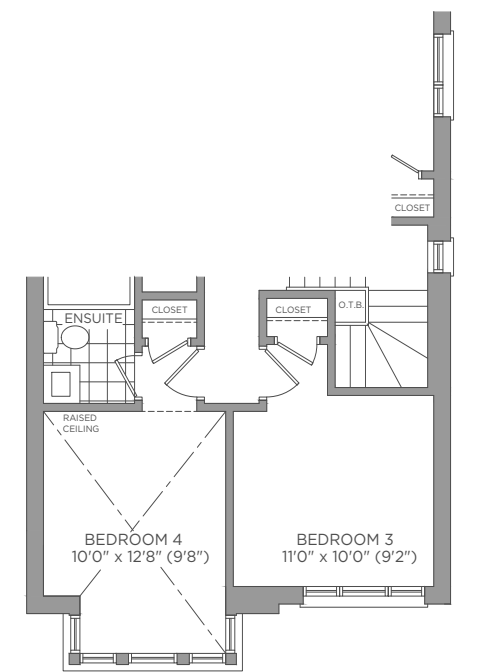
OPT. 1 FIRST FLOOR ELEVATION A



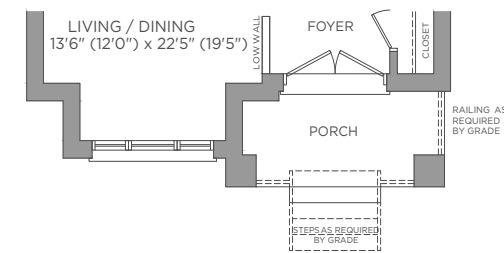
OPT. 2 FIRST FLOOR ELEVATION A



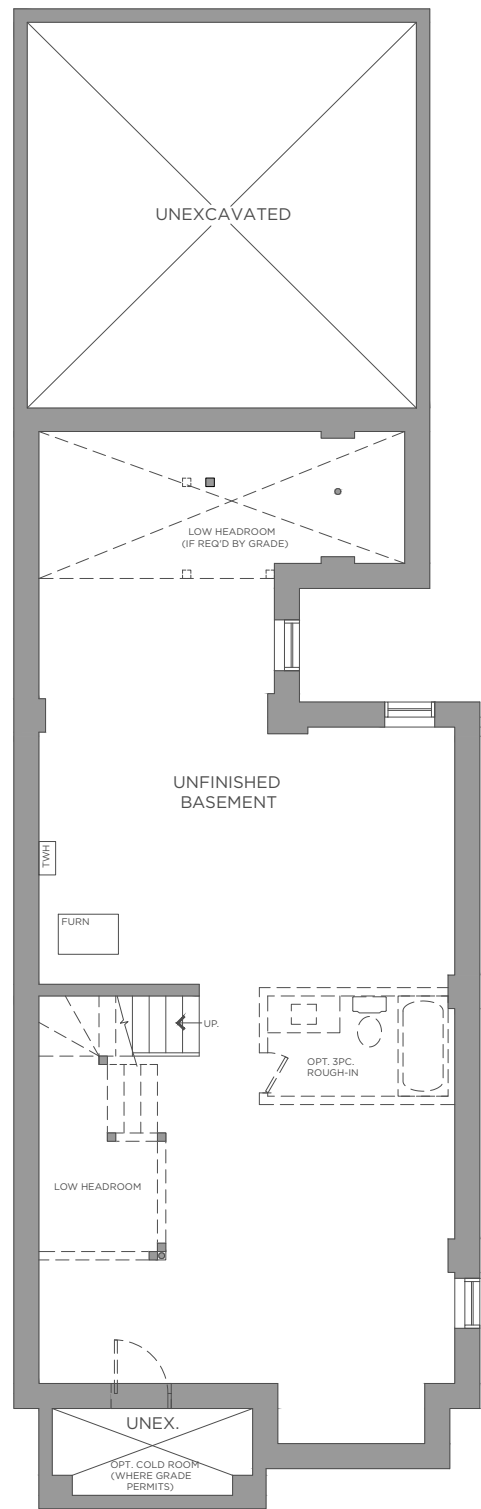
SECOND FLOOR ELEVATION A



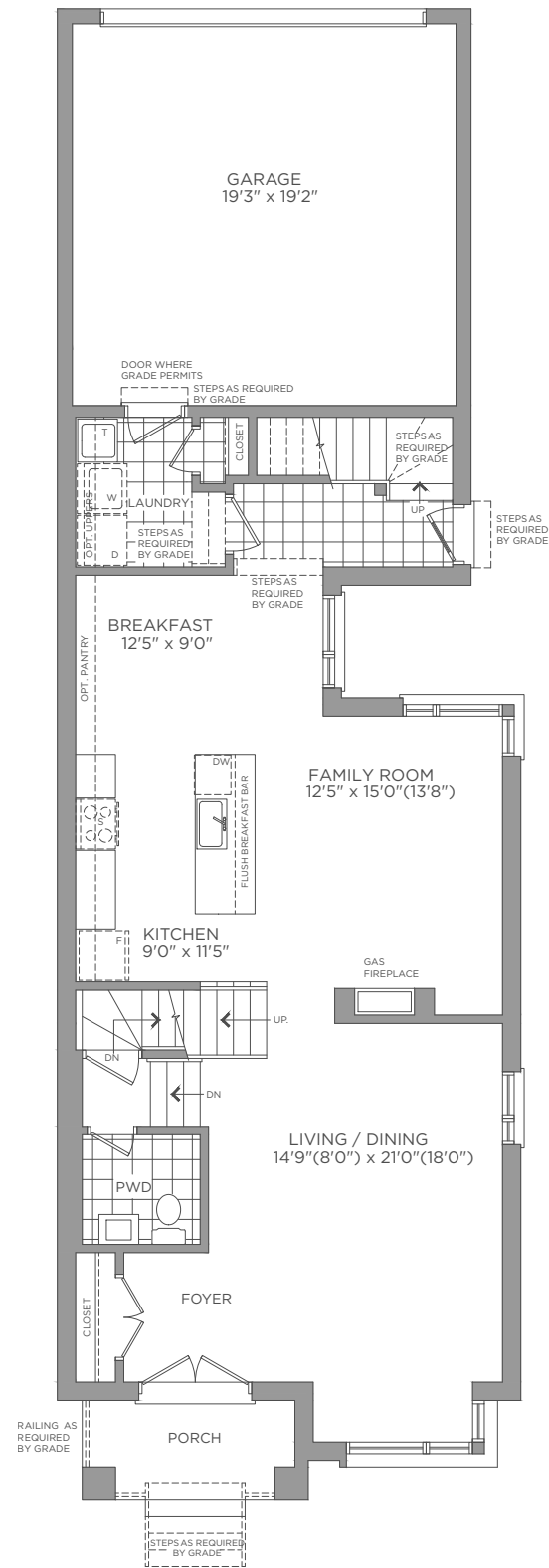
SECOND FLOOR ELEVATION B



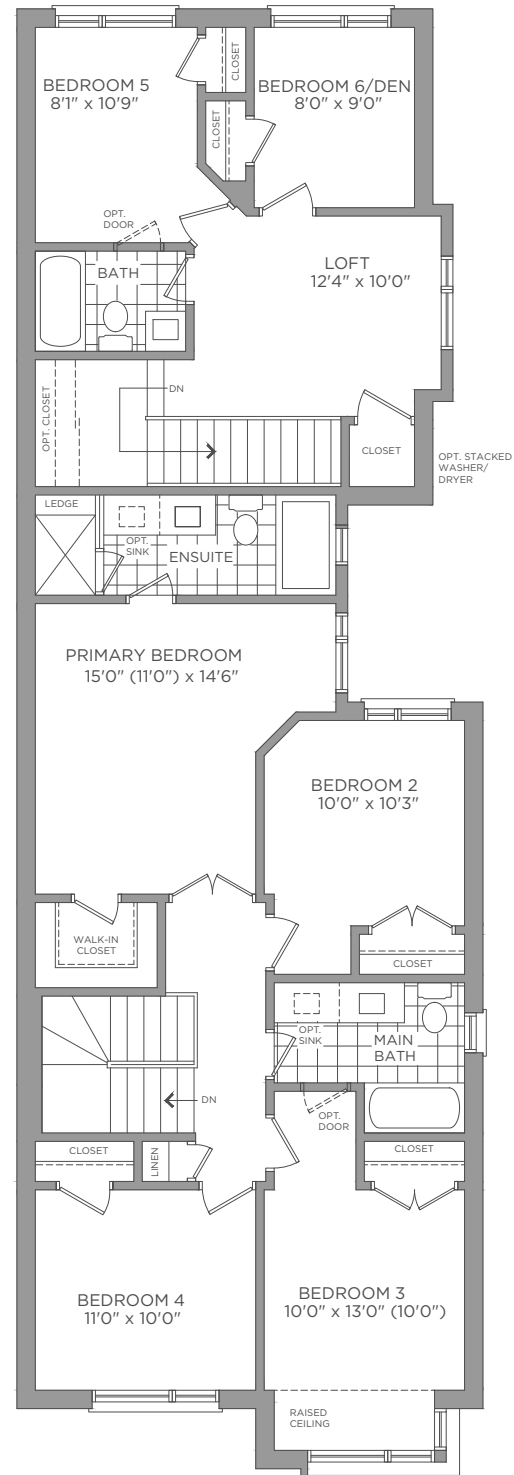
FIRST FLOOR ELEVATION B



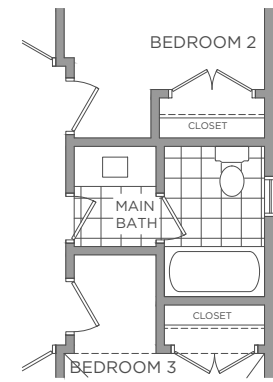
BASEMENT ELEVATION A



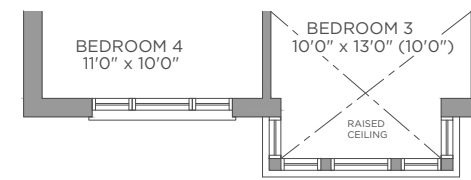
FIRST FLOOR ELEVATION A



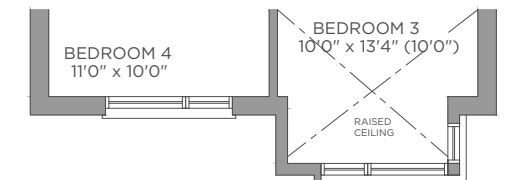
SECOND FLOOR ELEVATION A



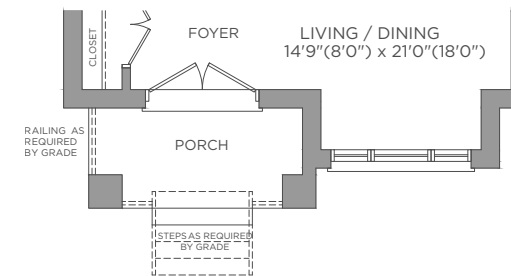
SECOND FLOOR OPT. MAIN BATH



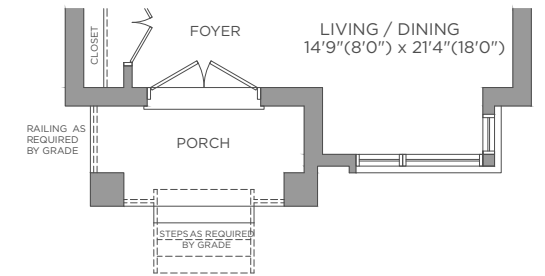
SECOND FLOOR ELEVATION B



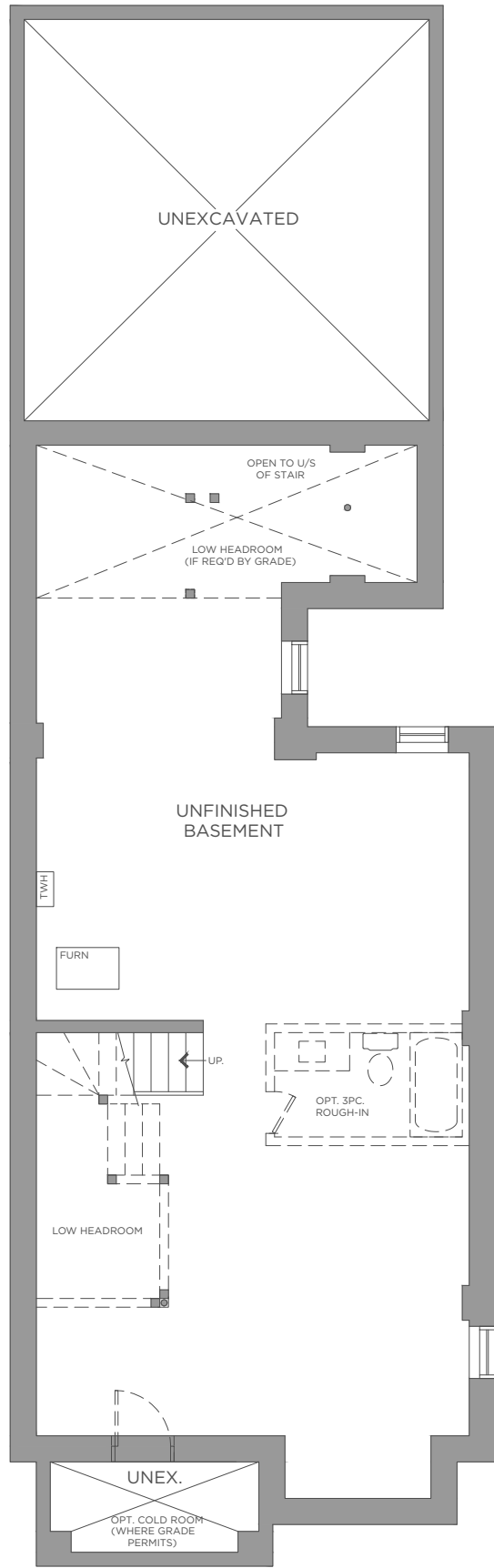
SECOND FLOOR ELEVATION C



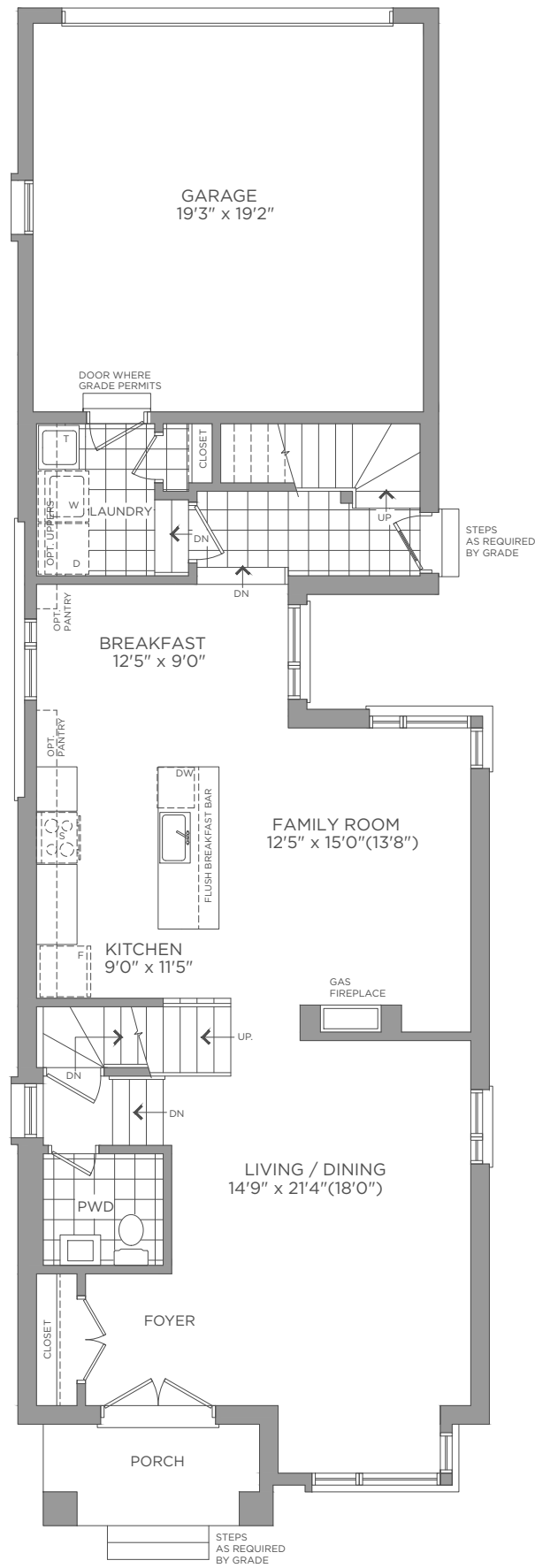
FIRST FLOOR ELEVATION B



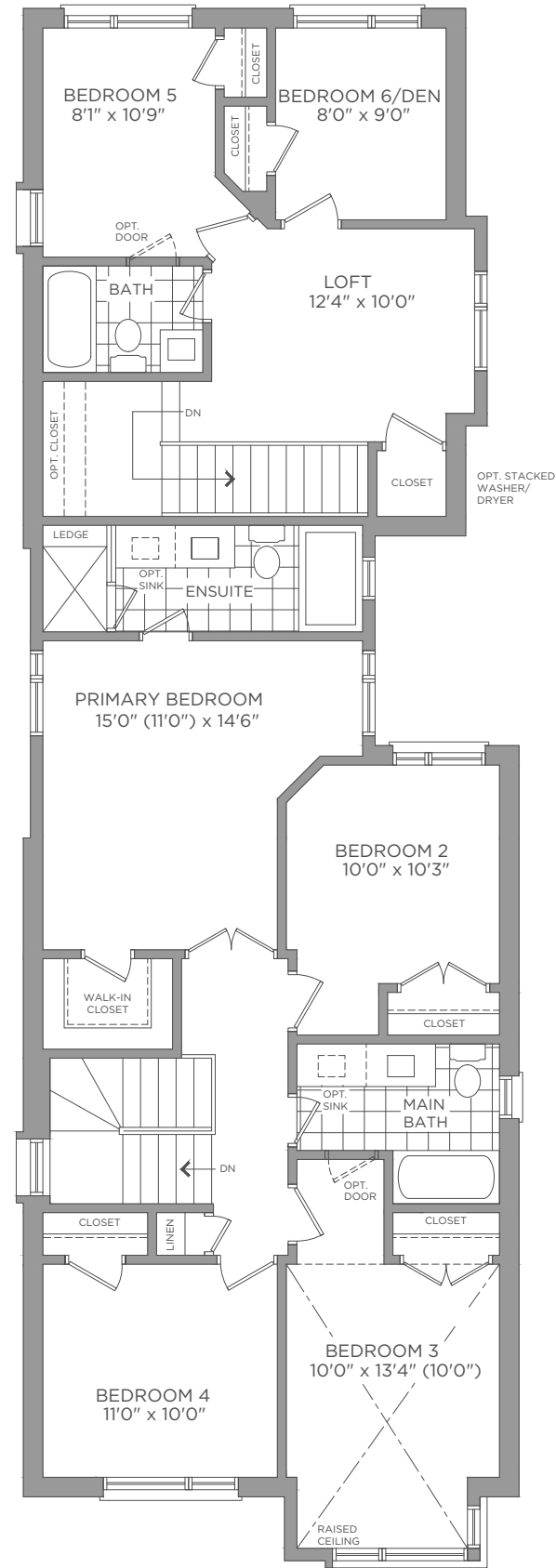
FIRST FLOOR ELEVATION C



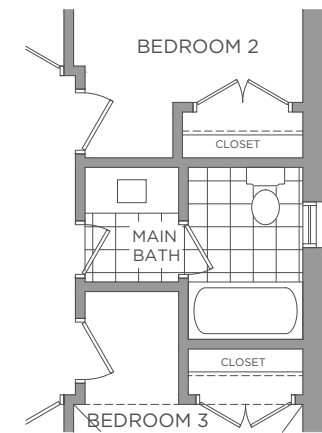
BASEMENT ELEVATION C



FIRST FLOOR ELEVATION C

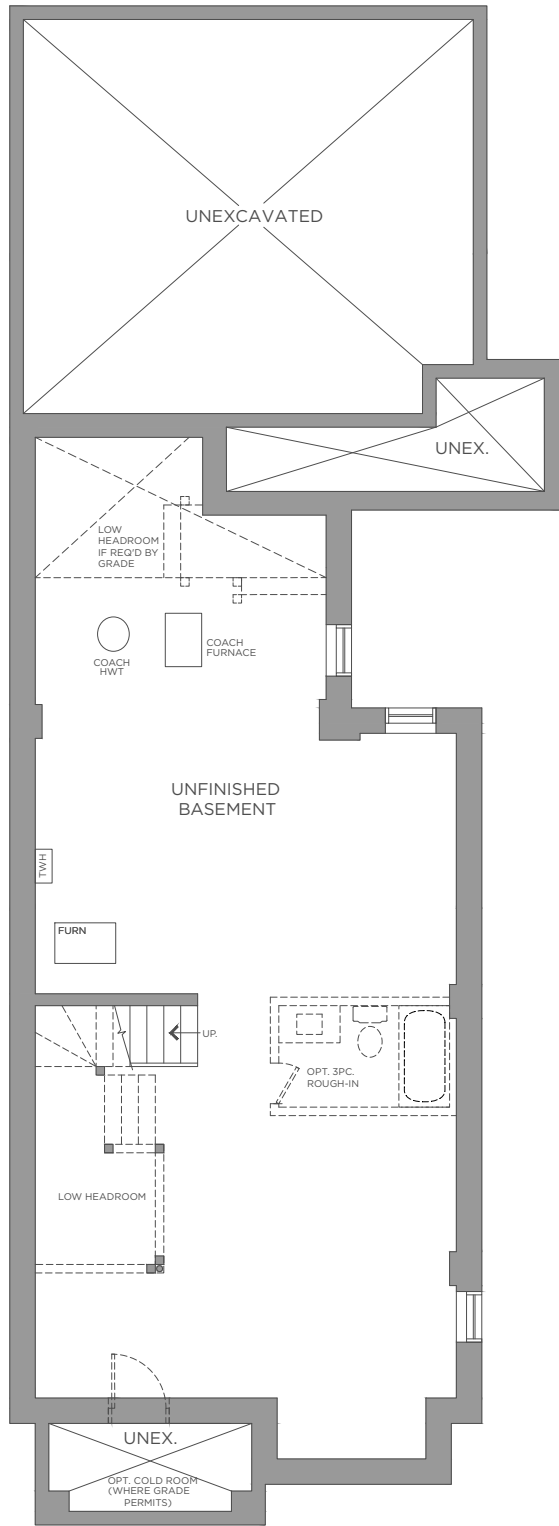


SECOND FLOOR ELEVATION C

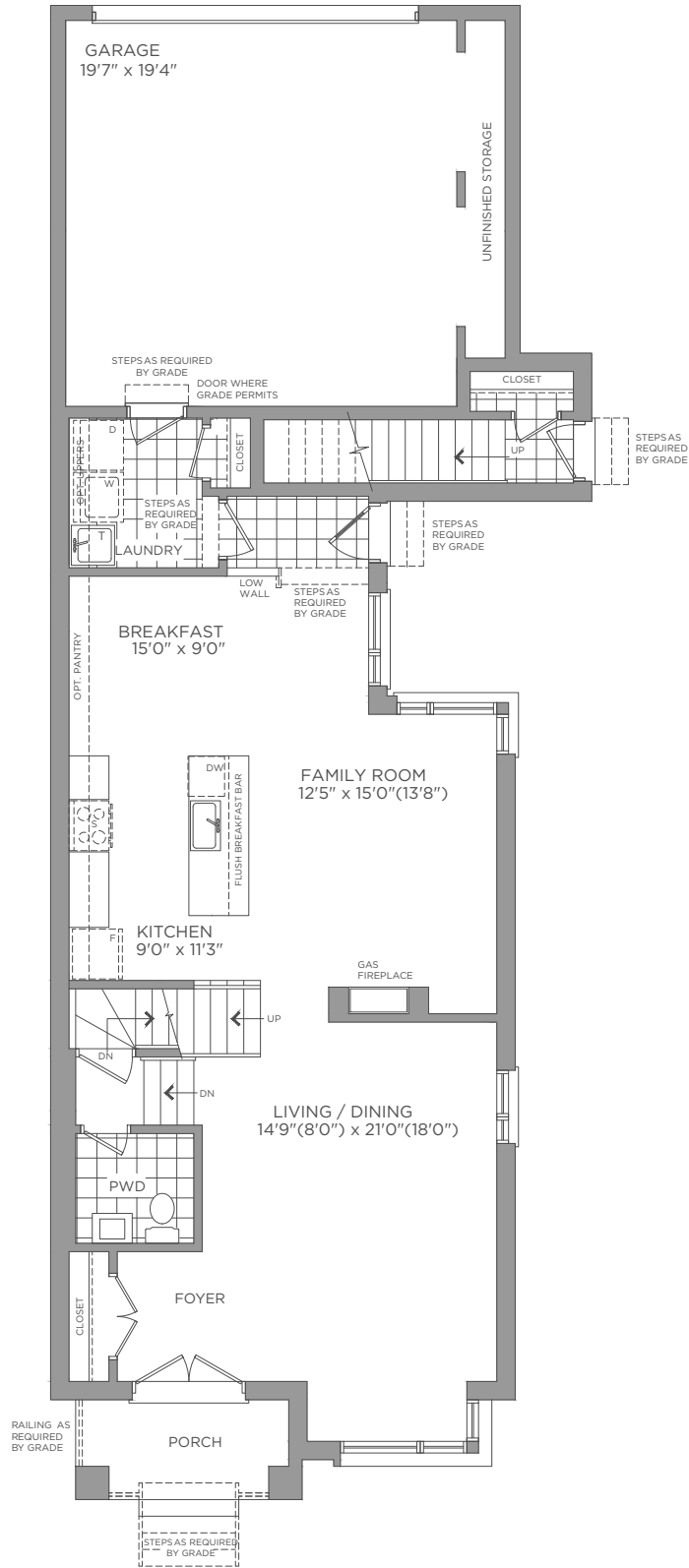


SECOND FLOOR OPT. MAIN BATH

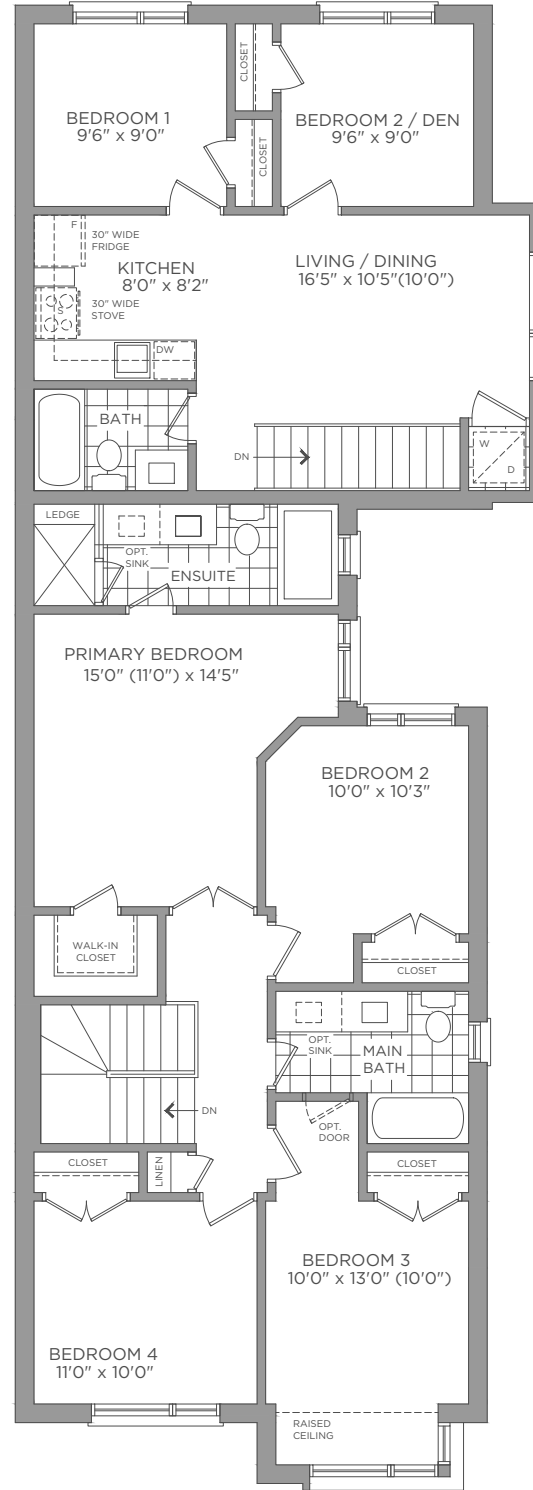




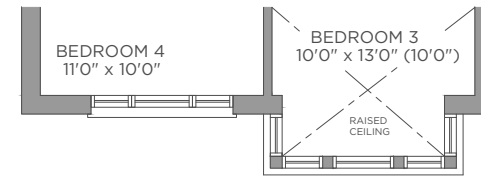
BASEMENT ELEVATION A, B & C



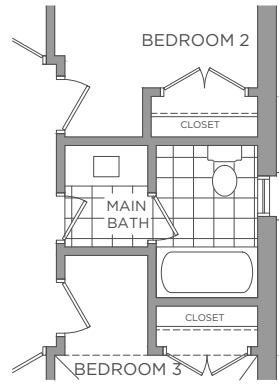
FIRST FLOOR ELEVATION A



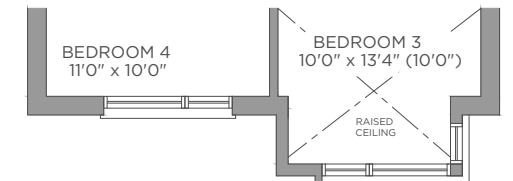
SECOND FLOOR ELEVATION A



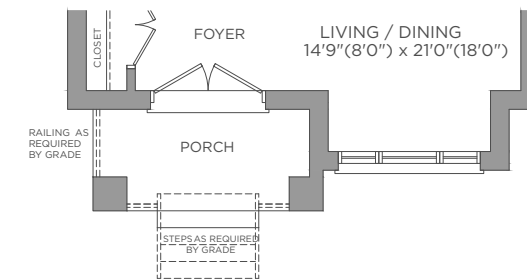
SECOND FLOOR ELEVATION B



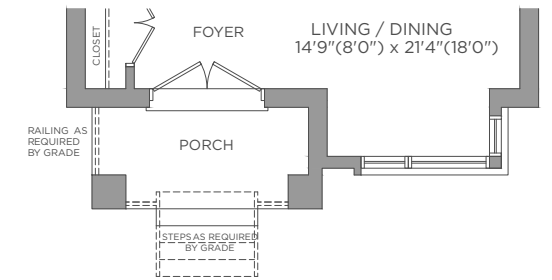
SECOND FLOOR OPT. MAIN BATH



SECOND FLOOR ELEVATION C



FIRST FLOOR ELEVATION B



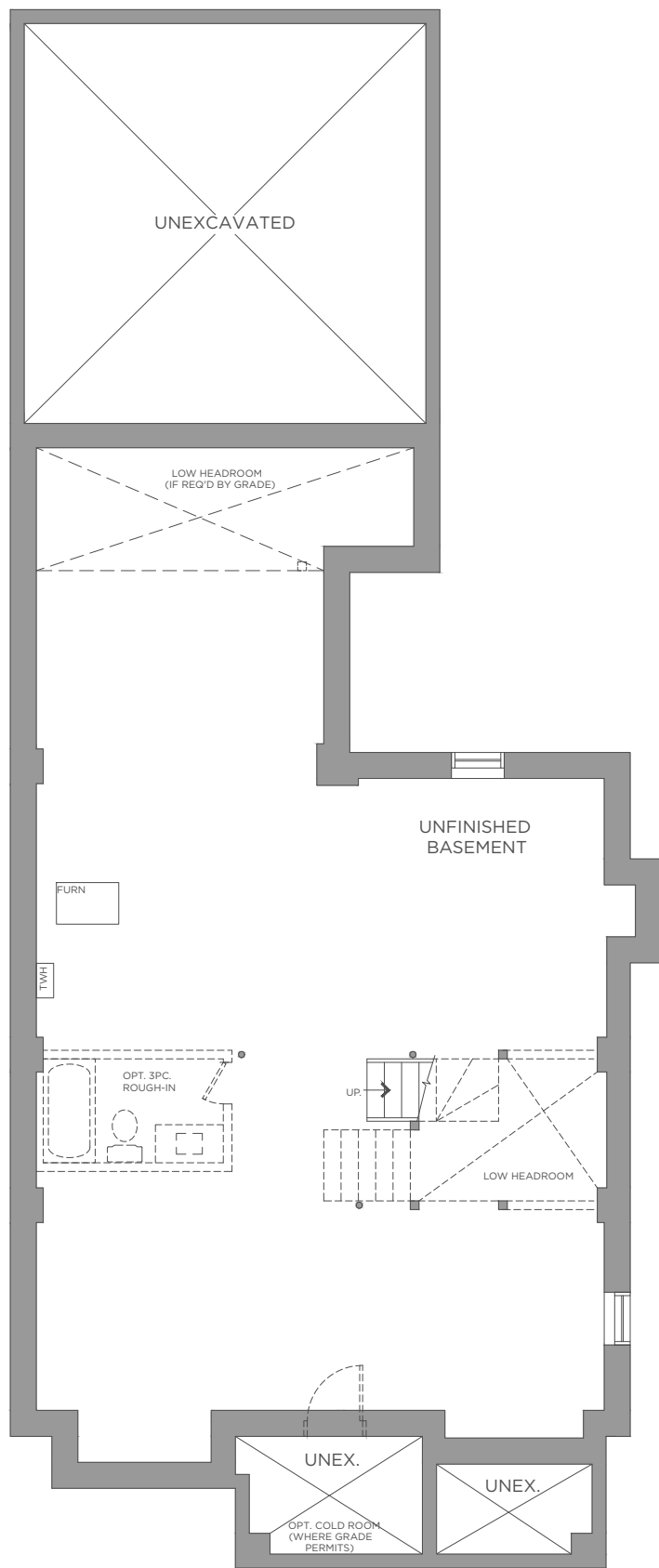
FIRST FLOOR ELEVATION C

**MADISON**  
GROUP

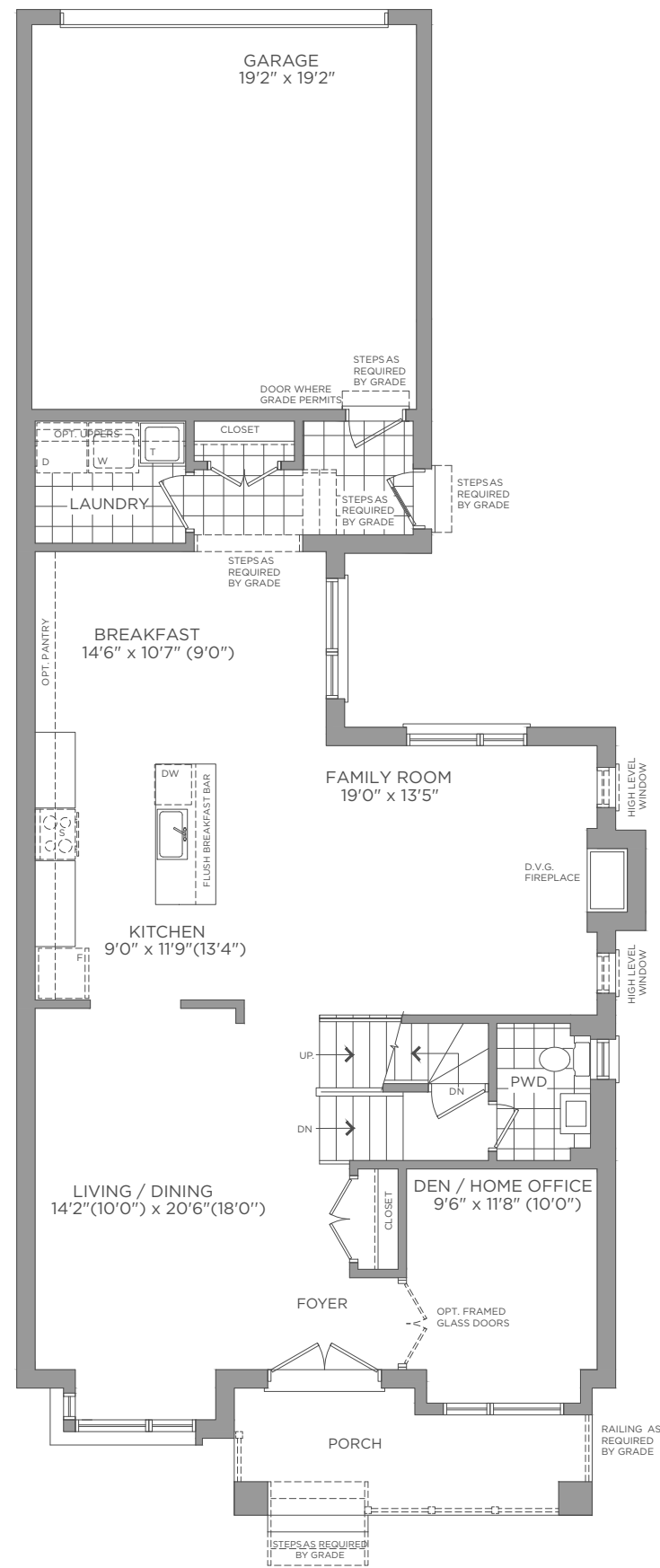
**BIRCHNUT**  
WITH COACH HOUSE

2,736 SQ.FT.

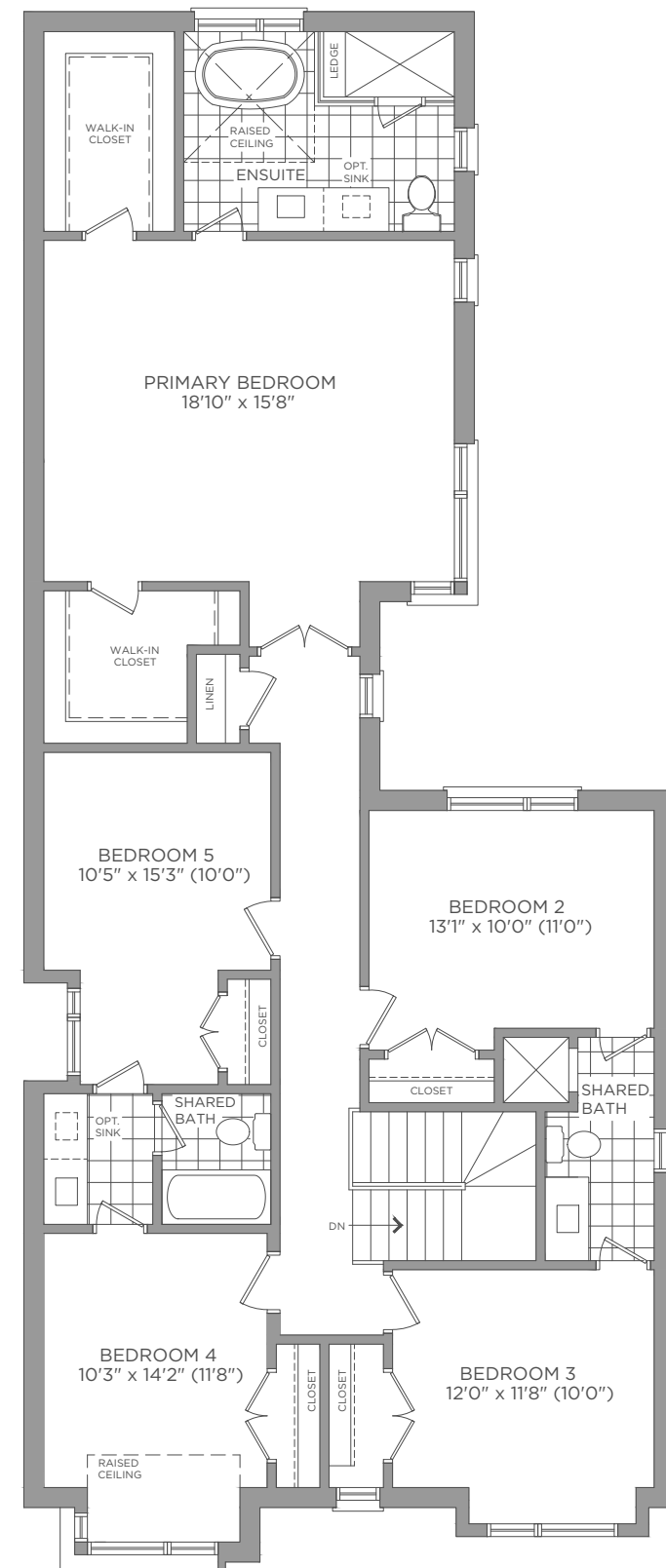
Dimensions, materials, specifications, structural elements and floorplans are subject to change without notice. Actual usable floor space may vary from the stated floor area. Layout shown may be the reverse of the unit purchased. Exterior elevation and site plan are subject to approval by applicable authorities and the purchaser agrees to accept any change. The size and location of windows, mullions, exterior doors, furnaces, HVAC Units, patios and/or balconies are subject to change and may vary depending on unit location within the project. All illustrations are artist's concept only. E. & O. E., March 2022



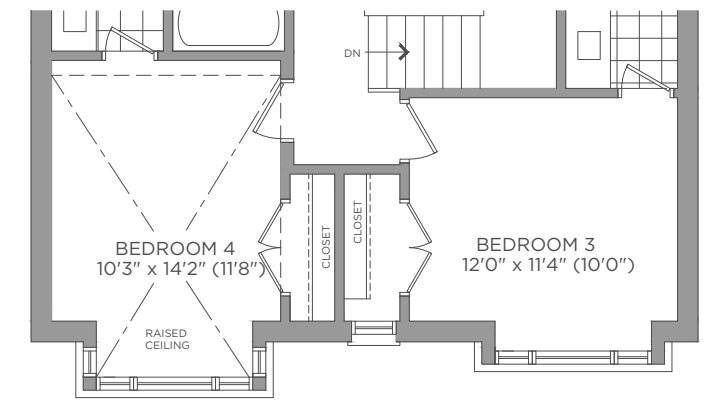
BASEMENT ELEVATION A



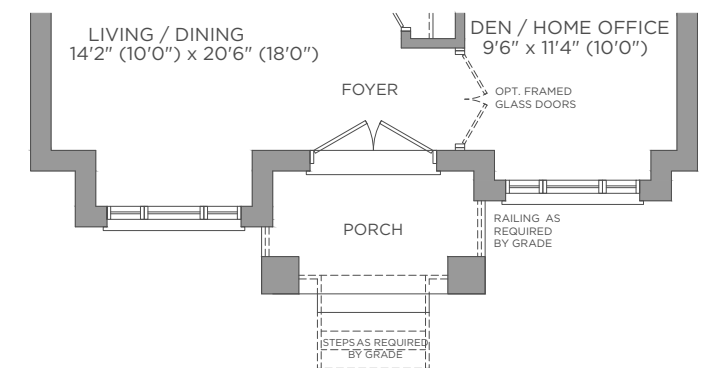
FIRST FLOOR ELEVATION A



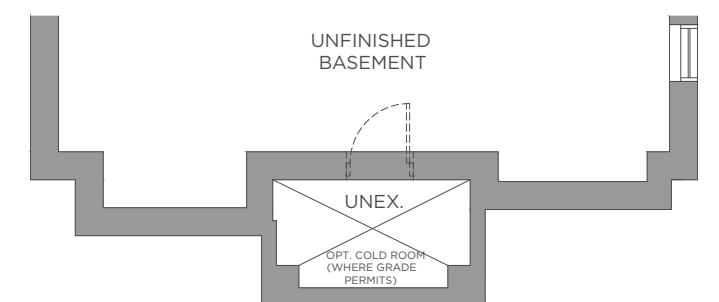
SECOND FLOOR ELEVATION A



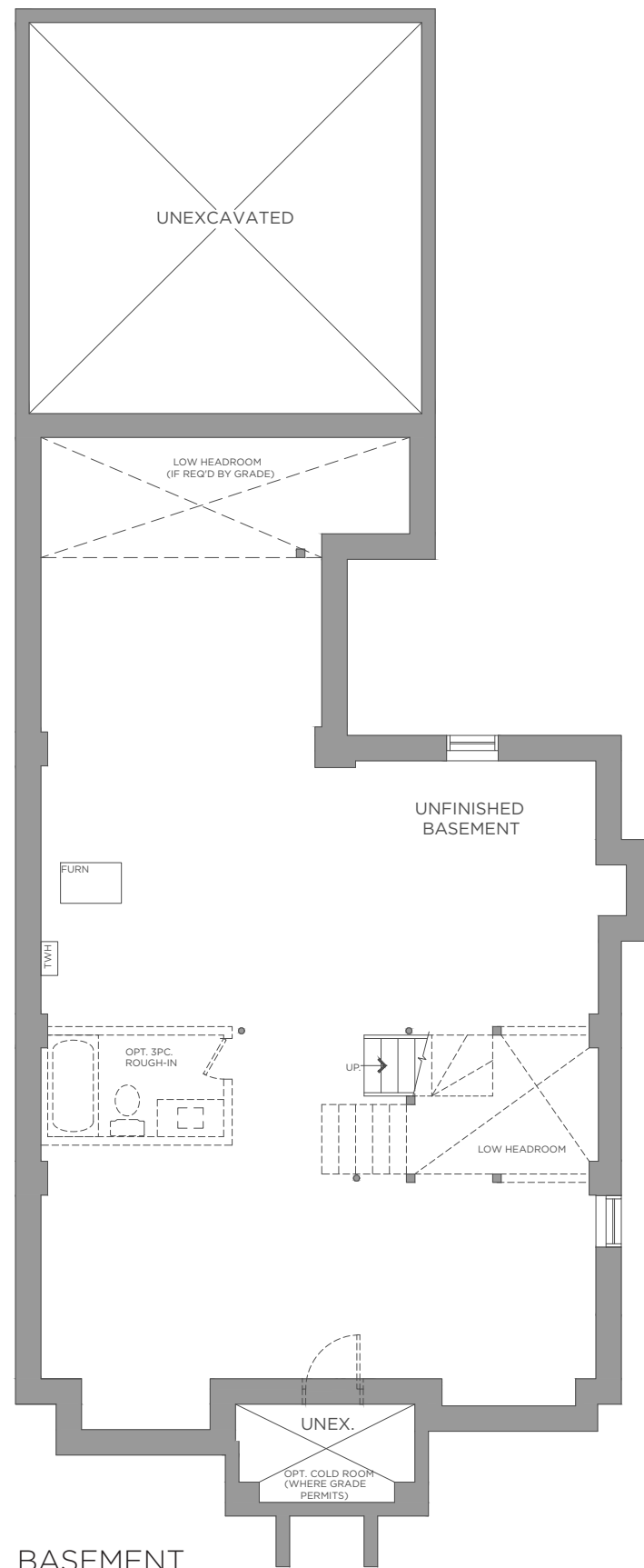
SECOND FLOOR ELEVATION B/C



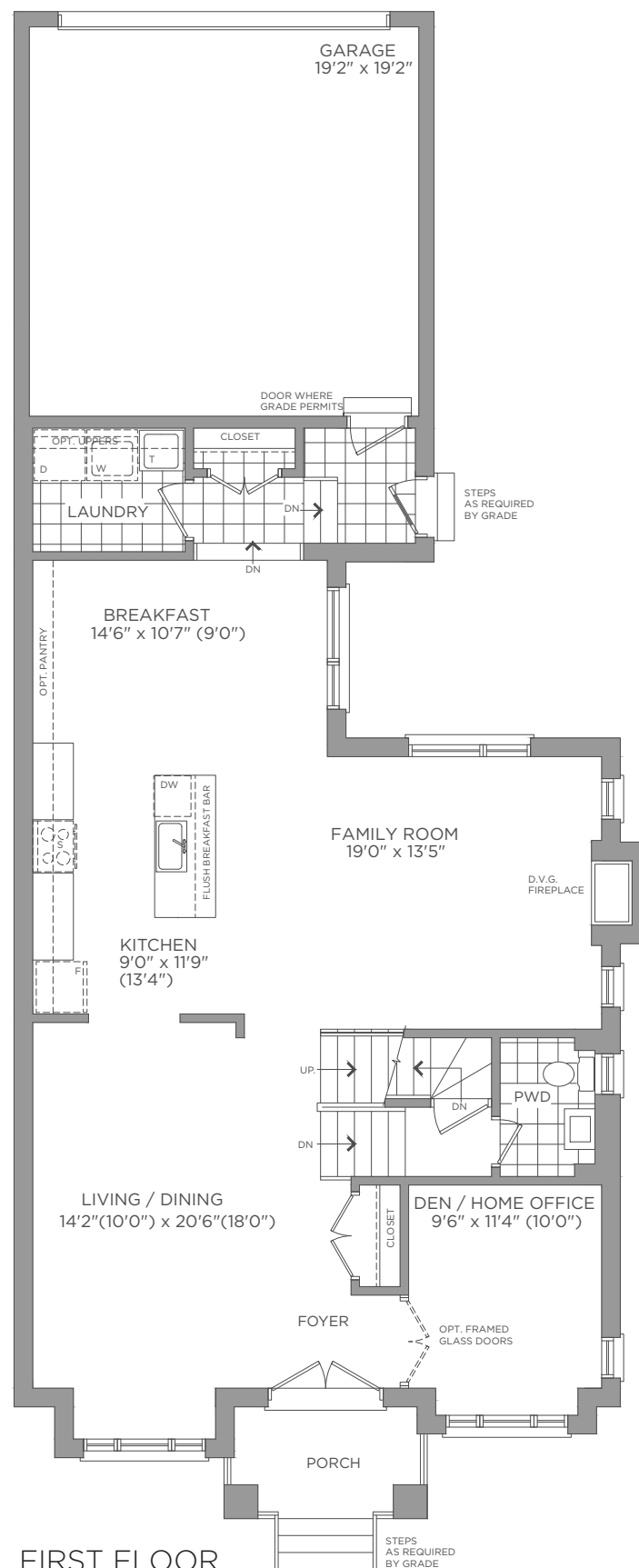
FIRST FLOOR ELEVATION B/C



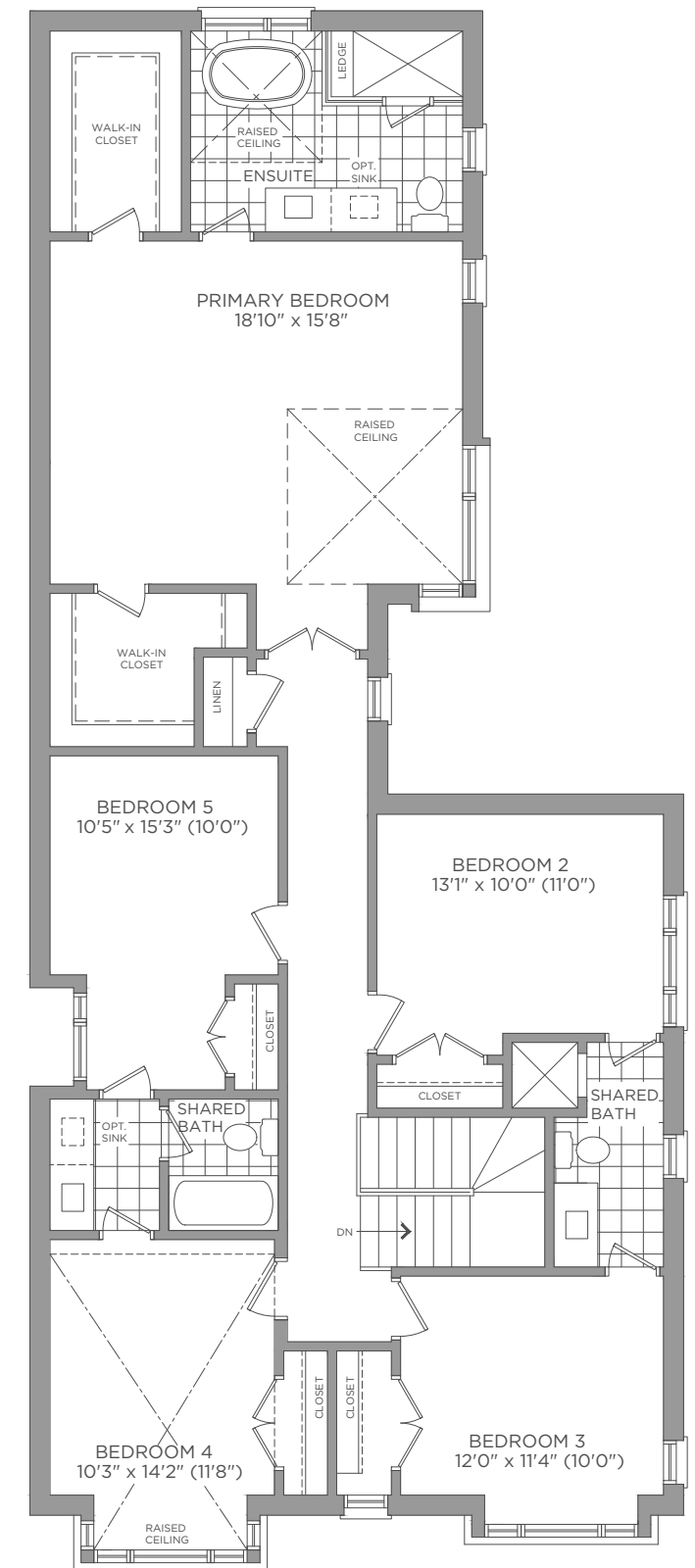
BASEMENT ELEVATION B/C



BASEMENT ELEVATION B



FIRST FLOOR ELEVATION B

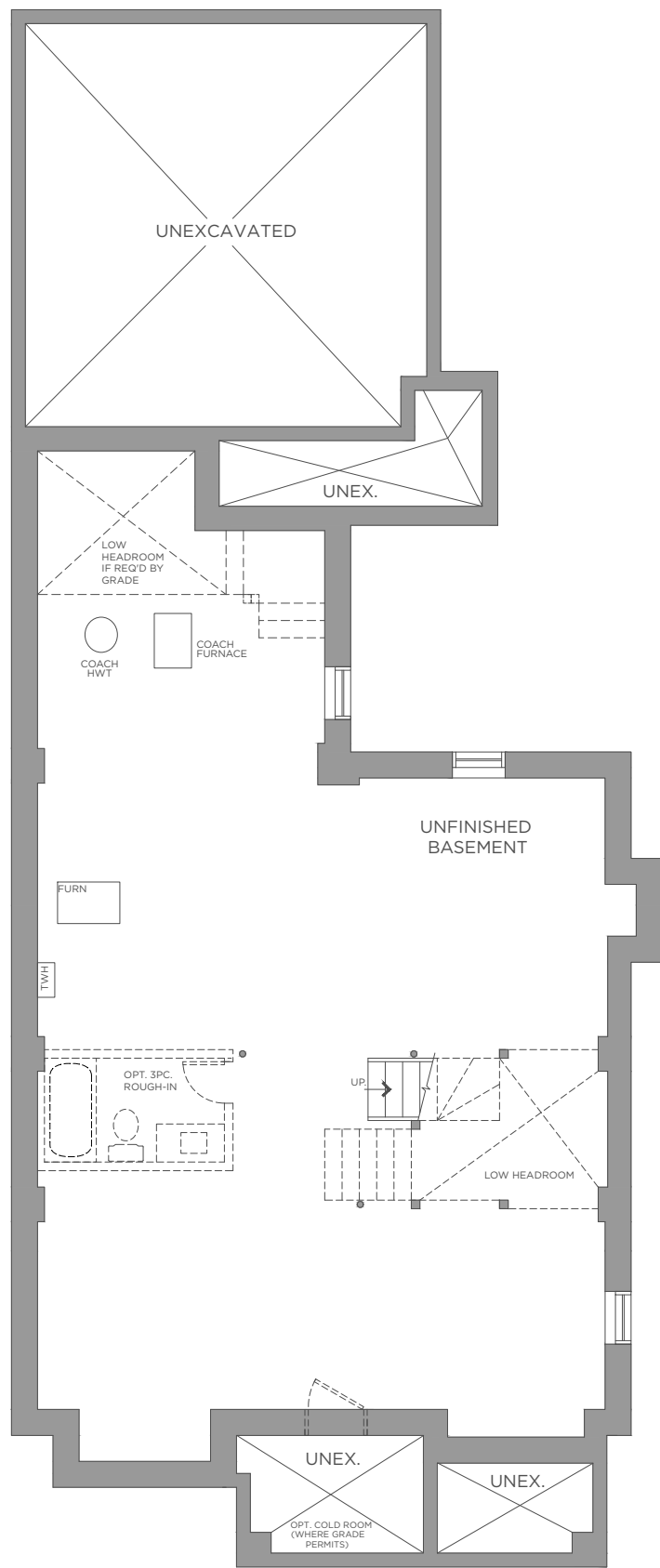


SECOND FLOOR ELEVATION B

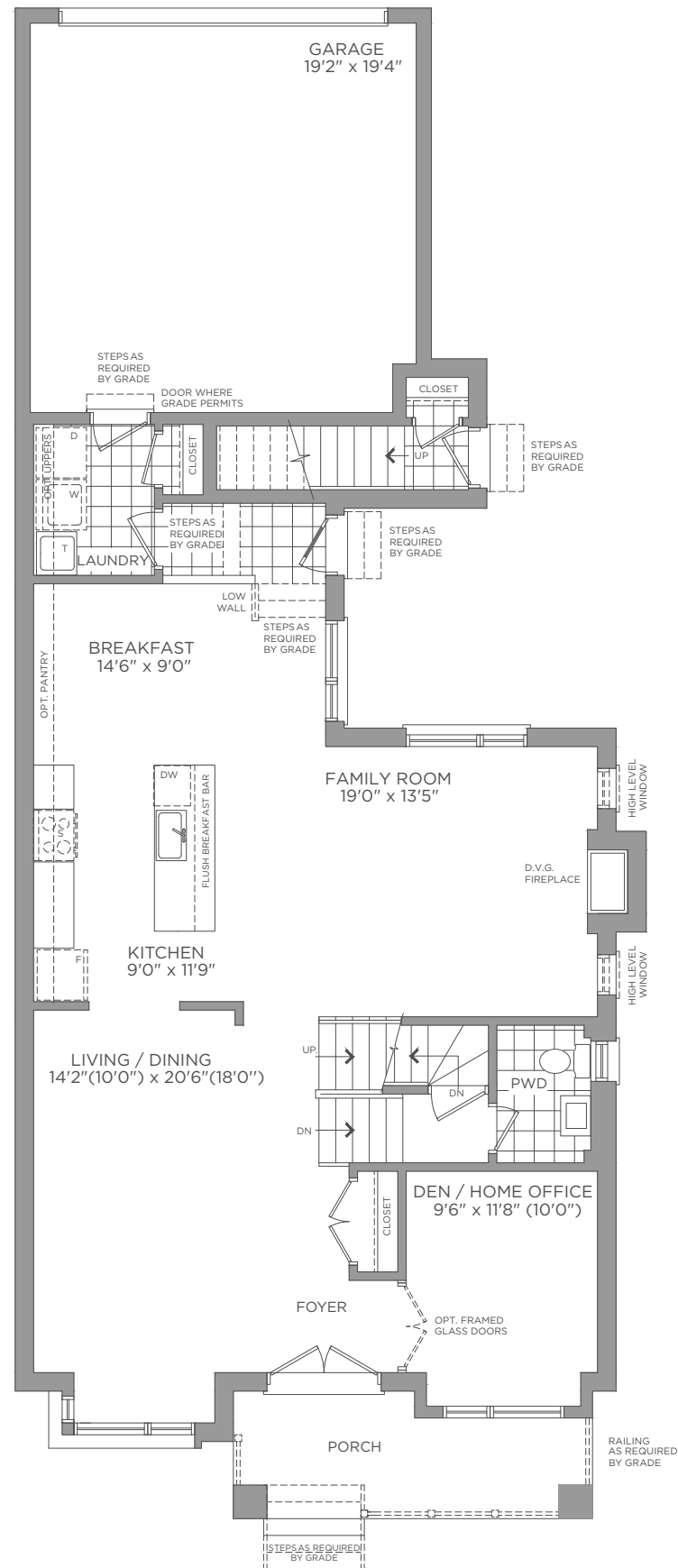
# MAPLE RIDGE

LOT 7

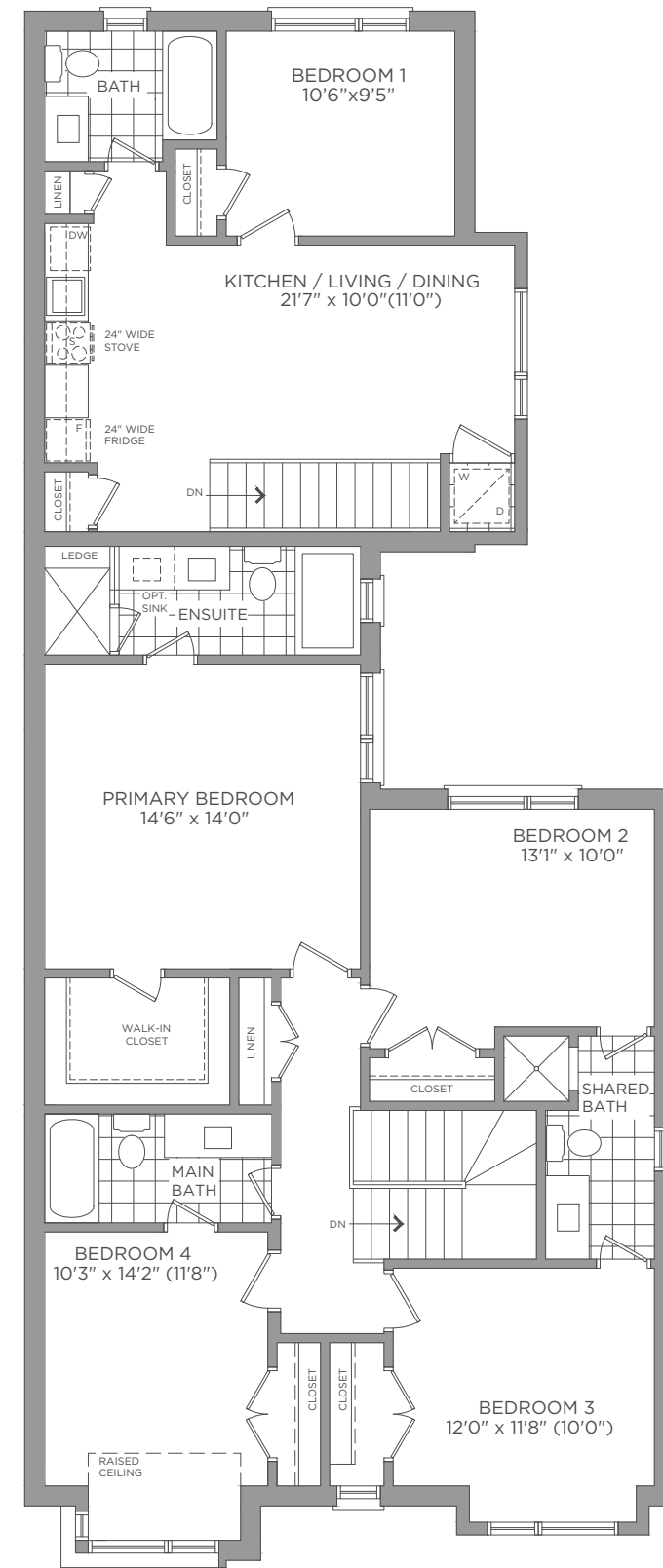
3,003 SQ.FT.



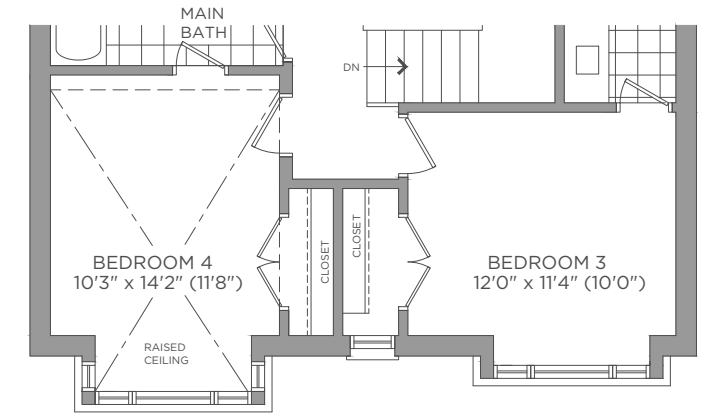
BASEMENT ELEVATION A



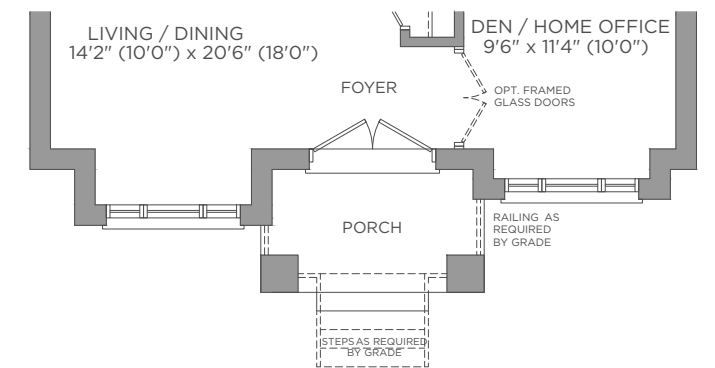
FIRST FLOOR ELEVATION A



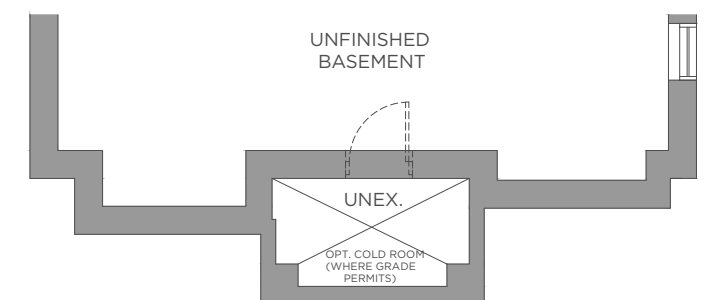
SECOND FLOOR ELEVATION A



SECOND FLOOR ELEVATION B/C



FIRST FLOOR ELEVATION B/C



BASEMENT ELEVATION B/C

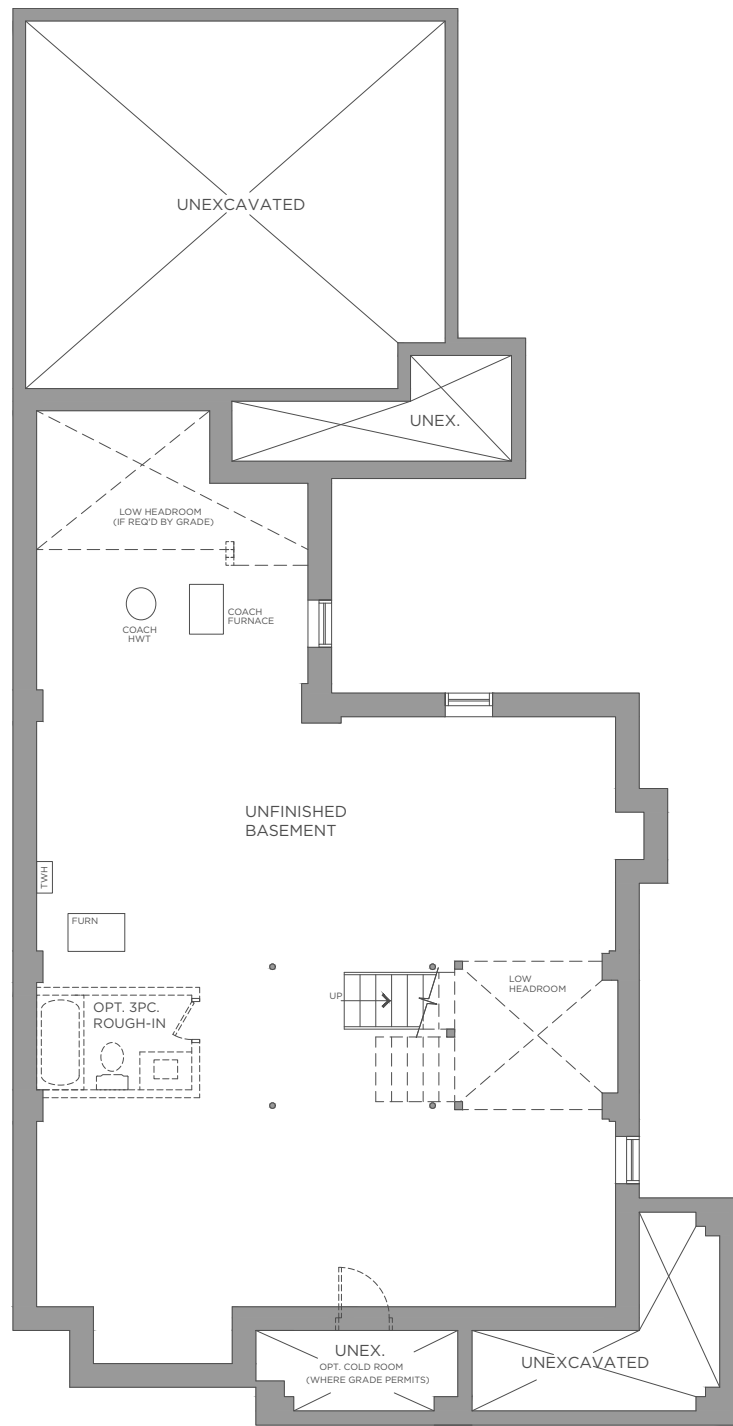
# CEDAR RIDGE

WITH COACH HOUSE

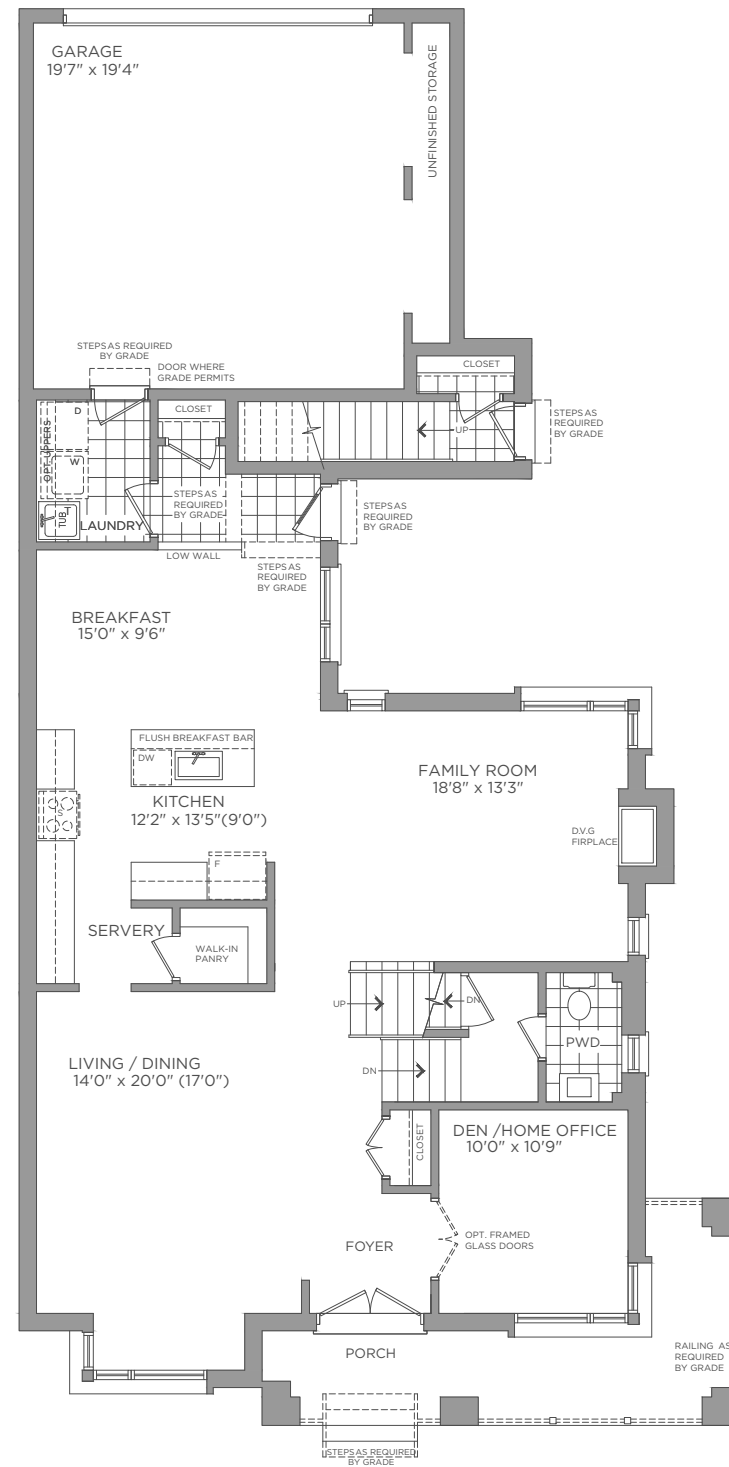


Dimensions, materials, specifications, structural elements and floorplans are subject to change without notice. Actual usable floor space may vary from the stated floor area. Layout shown may be the reverse of the unit purchased. Exterior elevation and site plan are subject to approval by applicable authorities and the purchaser agrees to accept any change. The size and location of windows, mullions, exterior doors, furnaces, HVAC Units, patios and/or balconies are subject to change and may vary depending on unit location within the project. All illustrations are artist's concept only. E. & O. E., March 2022

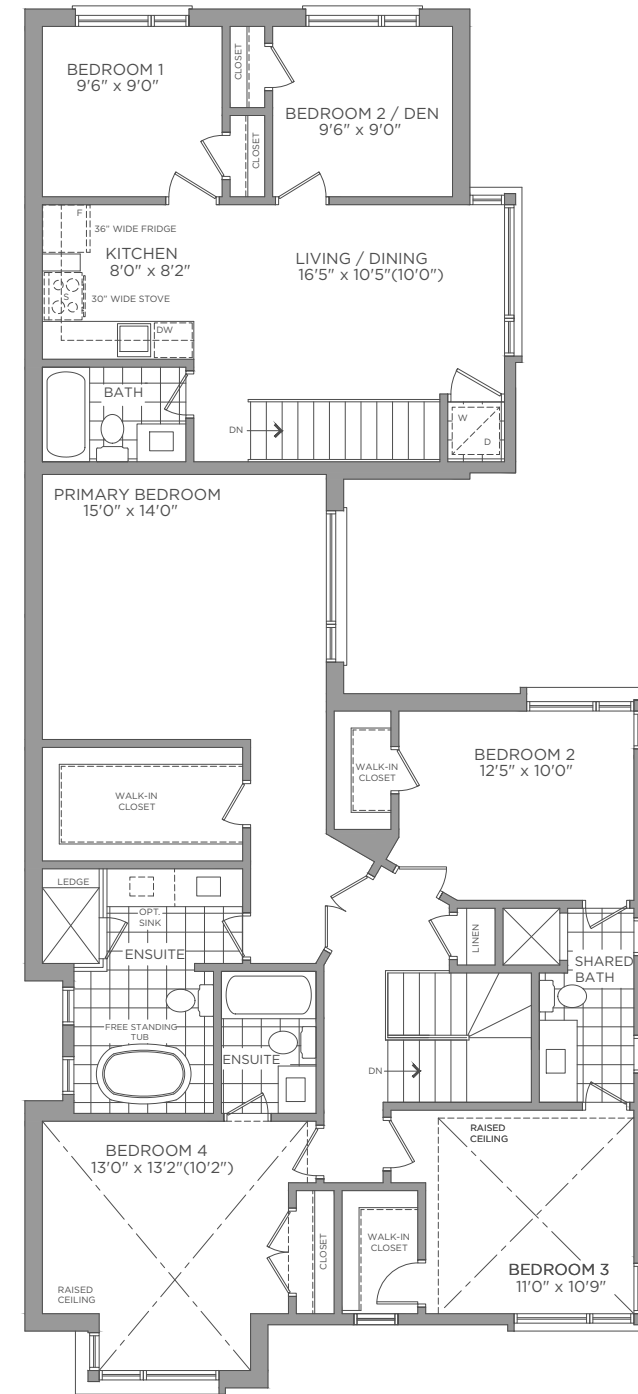
3,011 SQ.FT.



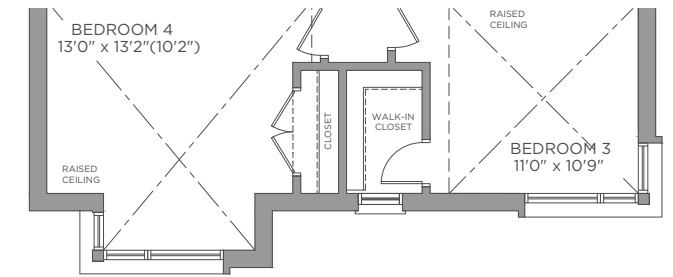
BASEMENT ELEVATION A



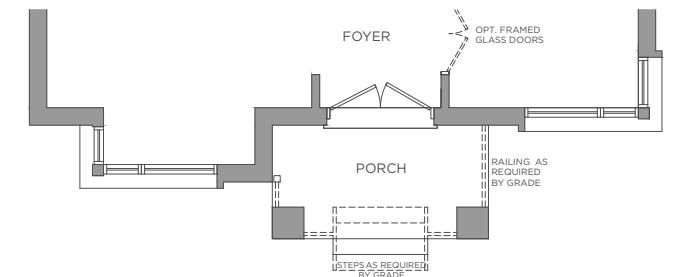
FIRST FLOOR ELEVATION A



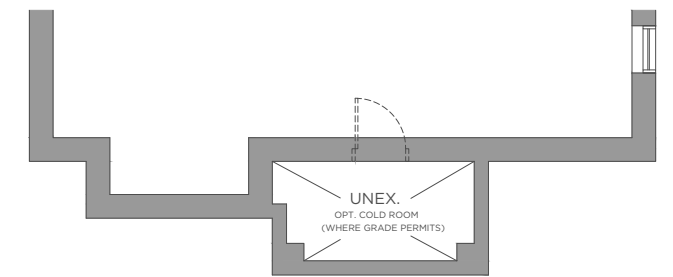
SECOND FLOOR ELEVATION A



SECOND FLOOR ELEVATION B



FIRST FLOOR ELEVATION B



BASEMENT ELEVATION B

# RED OAK CORNER

WITH COACH HOUSE



Dimensions, materials, specifications, structural elements and floorplans are subject to change without notice. Actual usable floor space may vary from the stated floor area. Layout shown may be the reverse of the unit purchased. Exterior elevation and site plan are subject to approval by applicable authorities and the purchaser agrees to accept any change. The size and location of windows, mullions, exterior doors, furnaces, HVAC Units, patios and/or balconies are subject to change and may vary depending on unit location within the project. All illustrations are artist's concept only. E. & O. E., March 2022

3,353 SQ.FT.