

TOWNS & SINGLES

**FRENCHMAN'S
BAY**
PICKERING



Artist's concept

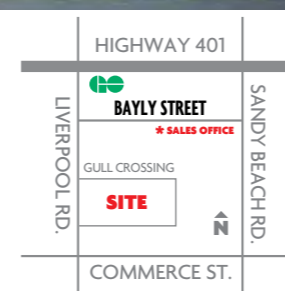
TOWNHOMES

- EASTPORT**
1910 Sq. Ft.
- NEWPORT**
2019 Sq. Ft.
- SOUTHPORT**
2069 Sq. Ft.
- EDGEPORT**
2155 Sq. Ft.

- BAYFIELD**
2172 Sq. Ft.
- BAYSHORE**
2204 Sq. Ft.
- BAYWATER**
2210 Sq. Ft.
- BAYSIDE**
2215 Sq. Ft.

DETACHED - 43 Ft.

- WHARF**
2692/2720 Sq. Ft.



MADISON
GROUP

madisongroup.ca | 905.839.0038 |



Site plan is not to scale and is artist's concept only. Site plan is subject to approval by applicable authorities and the purchaser agrees to accept any changes. Dimensions, sizes, road patterns, park and landscaping are proposed and approximate and may vary from finished community. All details are subject to change without notice. E. & O.E., June 2017.

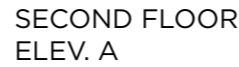


WHARF A

AVAILABLE ON LOTS 3 AND 6

2,720 SQ. FT.

**FRENCHMAN'S
BAY**
PICKERING



MADISON
GROUP

Dimensions, materials, specifications, structural elements and floorplans are subject to change without notice. Actual usable floor space may vary from the stated floor area. Layout shown may be the reverse of the unit purchased. Exterior elevation and site plan are subject to approval by applicable authorities and the purchaser agrees to accept any change. The size and location of windows, mullions, exterior doors, patios and/or balconies are subject to change and may vary depending on unit location within the project. Furniture is displayed for illustration purposes only and does not necessarily reflect the electrical plan of the unit. All illustrations are artist's concept only. E. & O., June 2017

TOWNS & SINGLES

**FRENCHMAN'S
BAY**
PICKERING



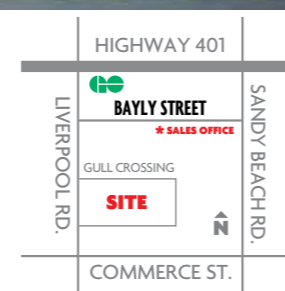
TOWNHOMES

- EASTPORT**
1910 Sq. Ft.
- NEWPORT**
2019 Sq. Ft.
- SOUTHPORT**
2069 Sq. Ft.
- EDGEPORT**
2155 Sq. Ft.

- BAYFIELD**
2172 Sq. Ft.
- BAYSHORE**
2204 Sq. Ft.
- BAYWATER**
2210 Sq. Ft.
- BAYSIDE**
2215 Sq. Ft.

DETACHED - 43 Ft.

- WHARF**
2692/2720 Sq. Ft.



MADISON
GROUP

madisongroup.ca | 905.839.0038 |



Site plan is not to scale and is artist's concept only. Site plan is subject to approval by applicable authorities and the purchaser agrees to accept any changes. Dimensions, sizes, road patterns, park and landscaping are proposed and approximate and may vary from finished community. All details are subject to change without notice. E. & O.E., June 2017.

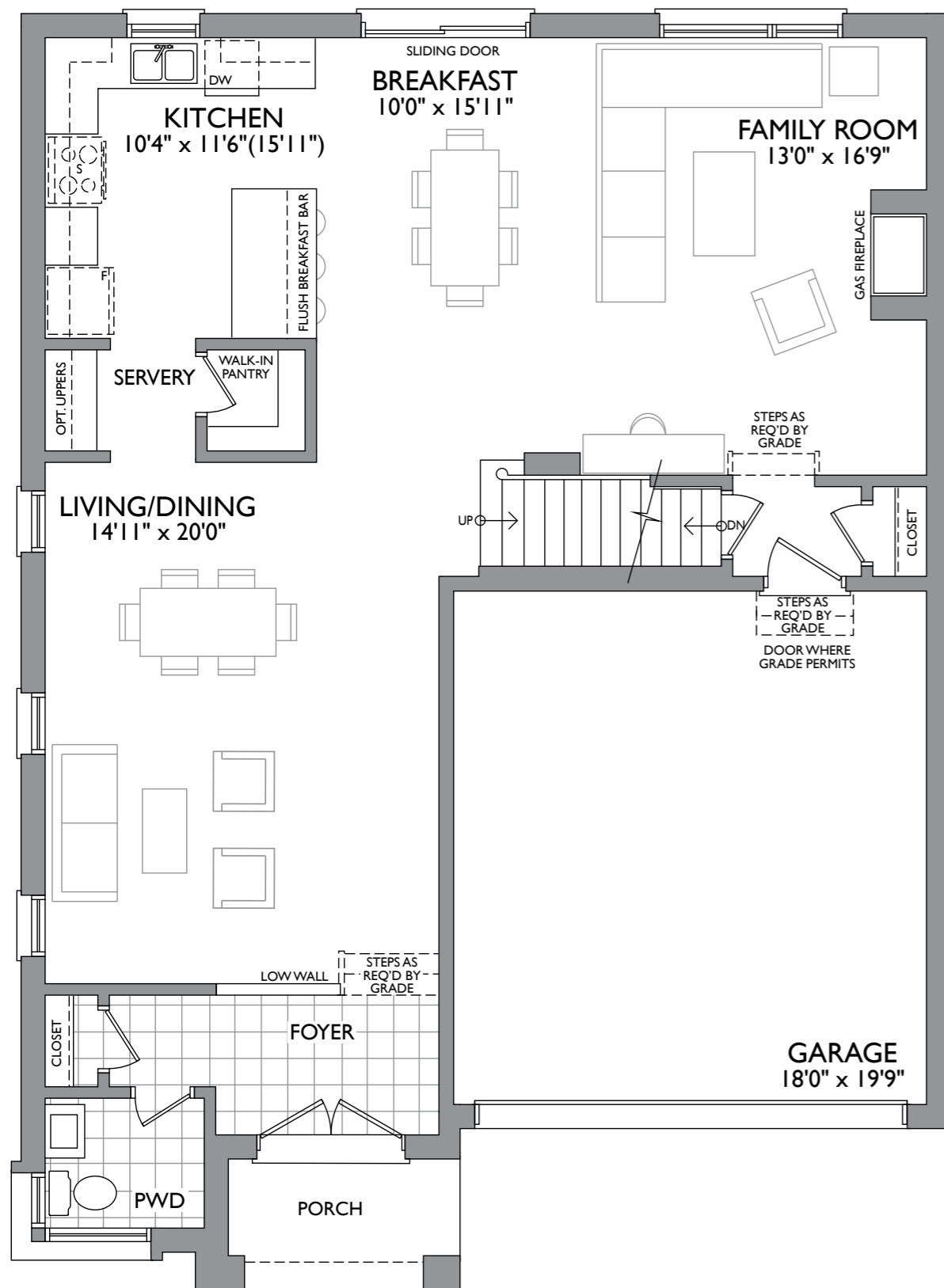


WHARF B

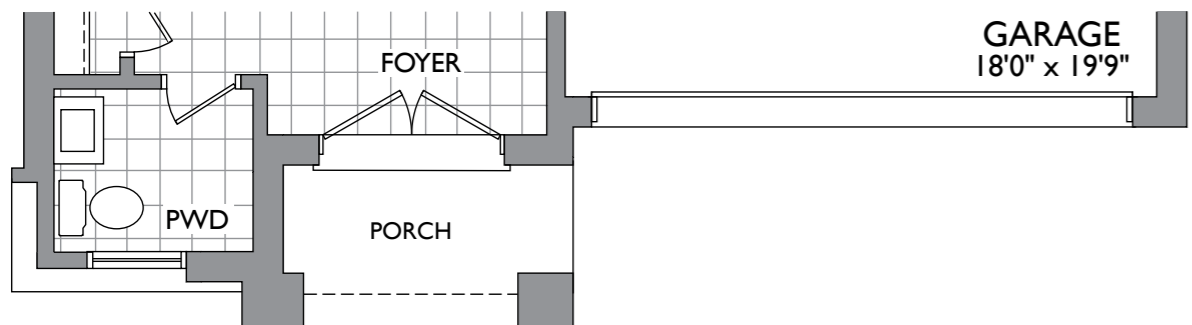
AVAILABLE ON LOTS 2, 5, 8, AND 10

2,692 SQ. FT.

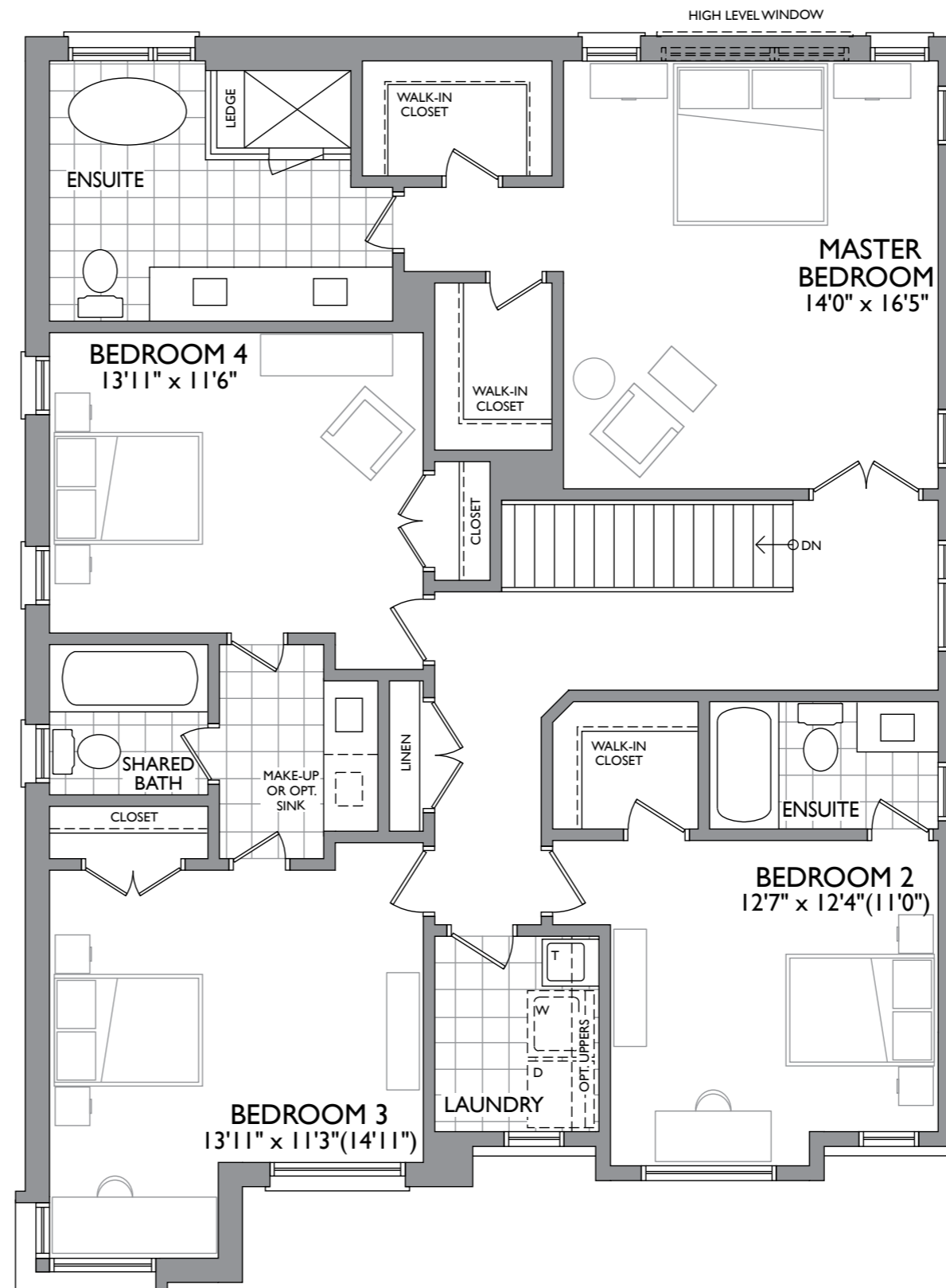
**FRENCHMAN'S
BAY**
PICKERING



FIRST FLOOR
ELEV. A & C



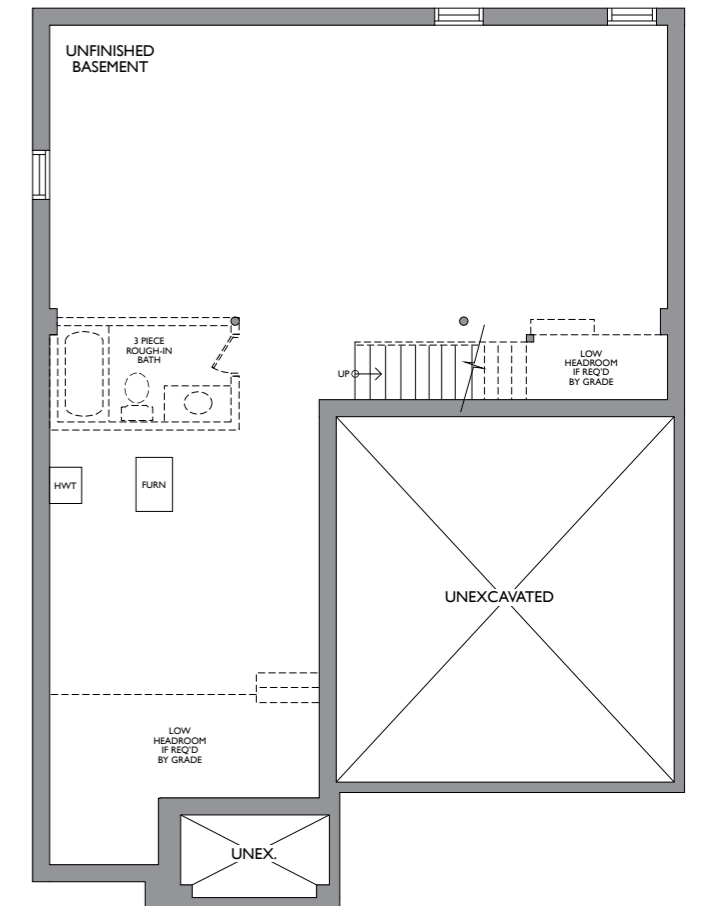
FIRST FLOOR
ELEV. B



SECOND FLOOR
ELEV. A



SECOND FLOOR
ELEV. B



BASEMENT

WHARF B
2,692 SQ. FT.

TOWNS & SINGLES

**FRENCHMAN'S
BAY**
PICKERING



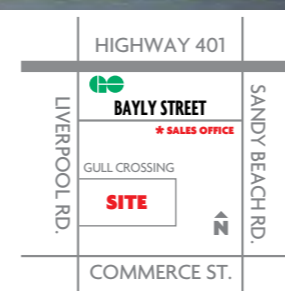
TOWNHOMES

- EASTPORT**
1910 Sq. Ft.
- NEWPORT**
2019 Sq. Ft.
- SOUTHPORT**
2069 Sq. Ft.
- EDGEPORT**
2155 Sq. Ft.

- BAYFIELD**
2172 Sq. Ft.
- BAYSHORE**
2204 Sq. Ft.
- BAYWATER**
2210 Sq. Ft.
- BAYSIDE**
2215 Sq. Ft.

DETACHED - 43 Ft.

- WHARF**
2692/2720 Sq. Ft.



MADISON
GROUP

madisongroup.ca | 905.839.0038 |



Site plan is not to scale and is artist's concept only. Site plan is subject to approval by applicable authorities and the purchaser agrees to accept any changes. Dimensions, sizes, road patterns, park and landscaping are proposed and approximate and may vary from finished community. All details are subject to change without notice. E. & O.E., June 2017.

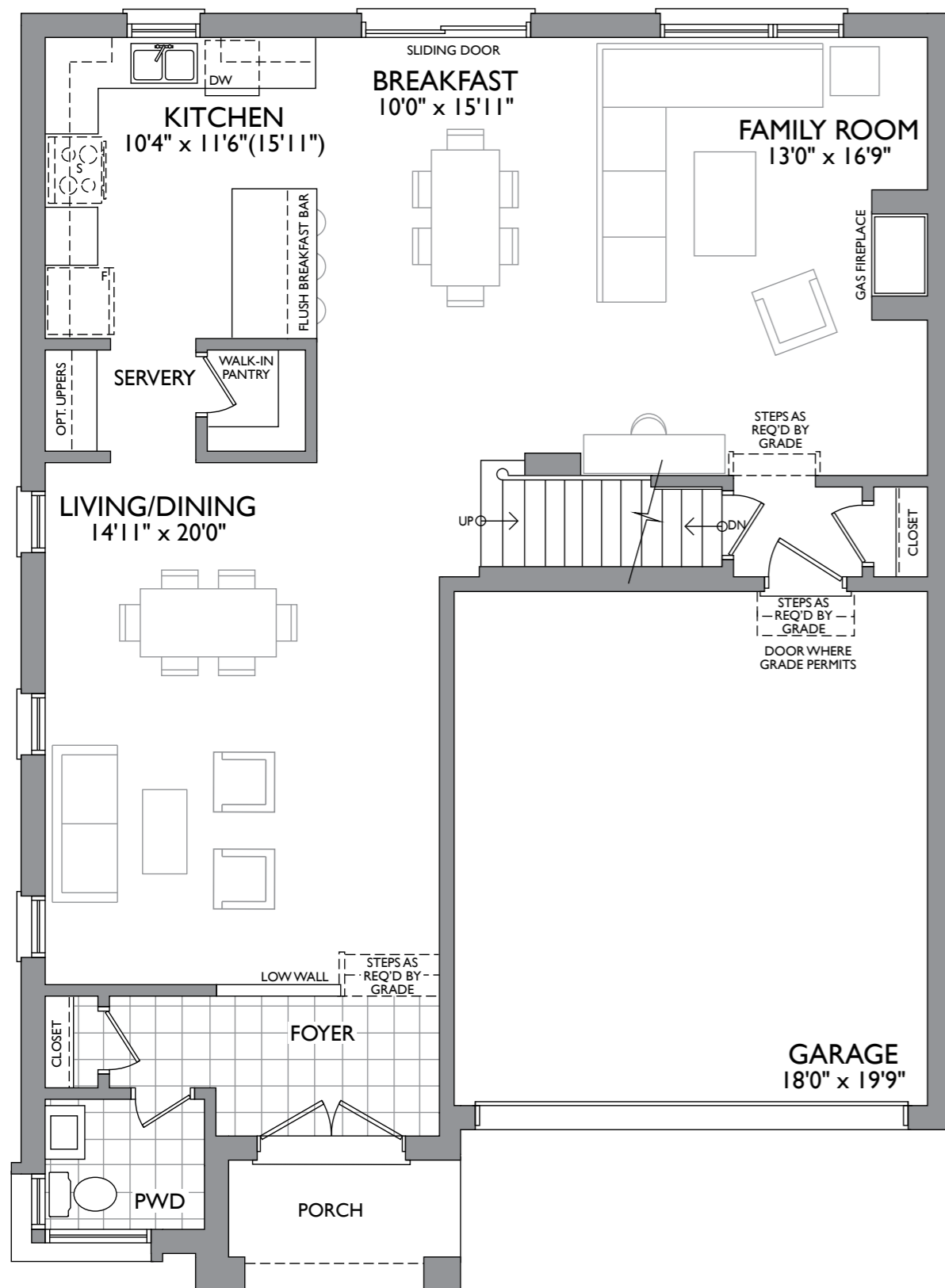


WHARF C

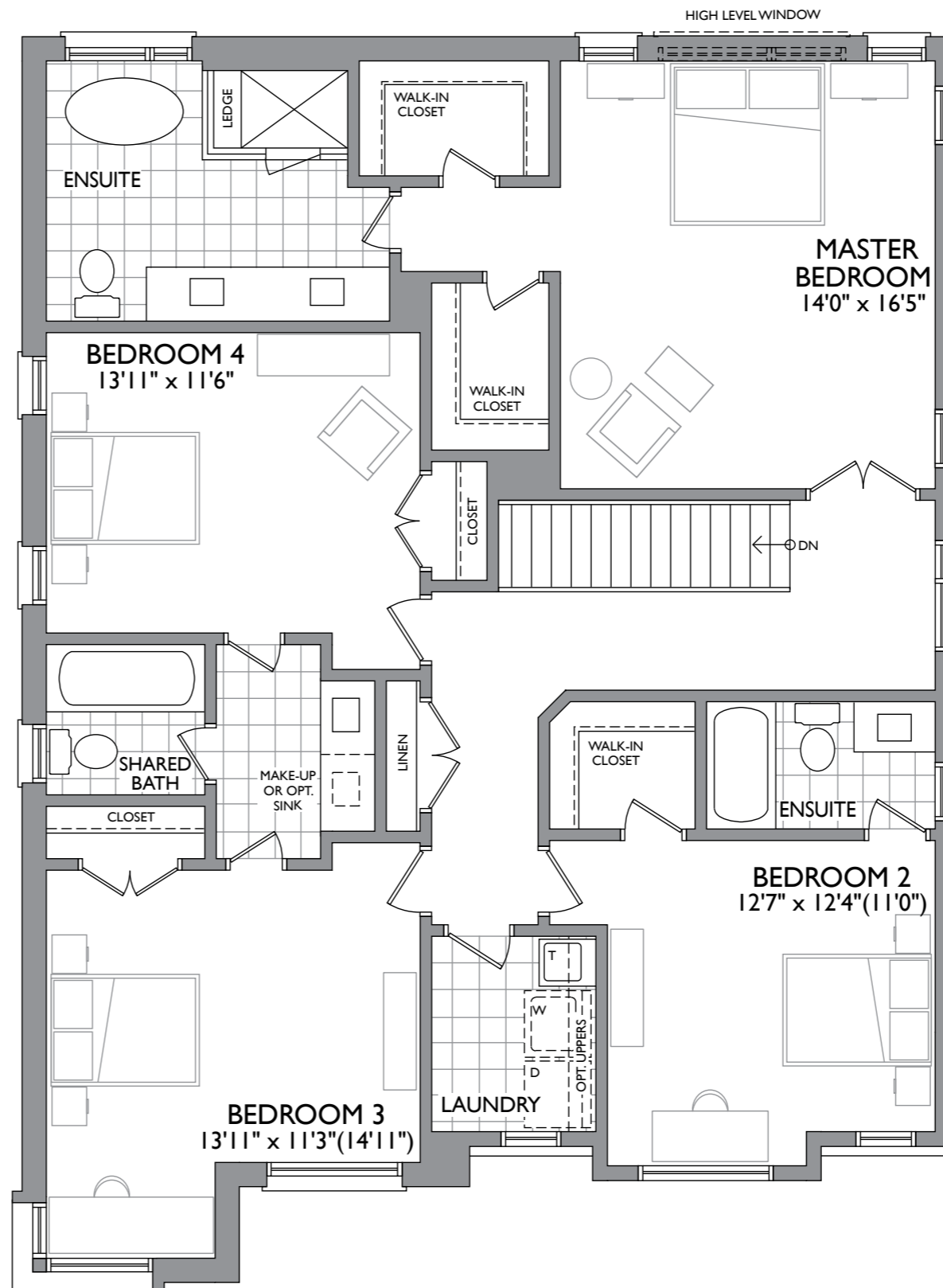
AVAILABLE ON LOTS 1, 4, 7, AND 9

2,692 SQ. FT.

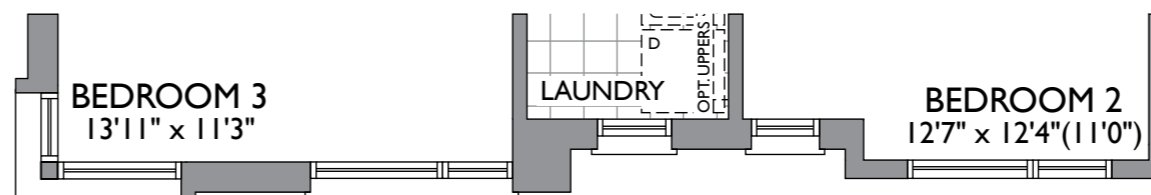
**FRENCHMAN'S
BAY**
PICKERING



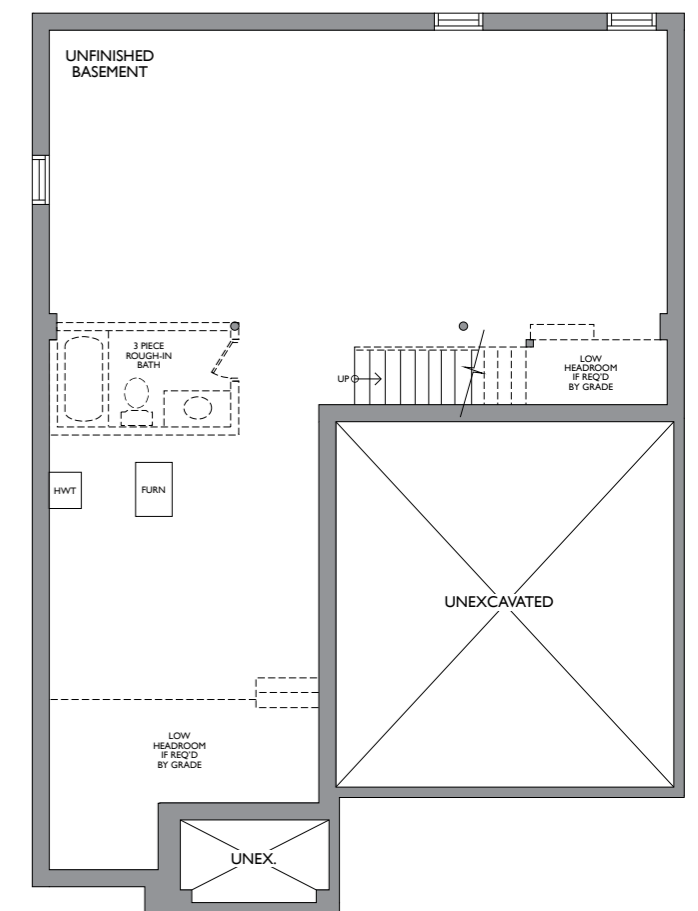
FIRST FLOOR
ELEV. A & C



SECOND FLOOR
ELEV. A



SECOND FLOOR
ELEV. C



BASEMENT

MADISON
GROUP

WHARF C

2,692 SQ. FT.

Dimensions, materials, specifications, structural elements and floorplans are subject to change without notice. Actual usable floor space may vary from the stated floor area. Layout shown may be the reverse of the unit purchased. Exterior elevation and site plan are subject to approval by applicable authorities and the purchaser agrees to accept any change. The size and location of windows, mullions, exterior doors, patios and/or balconies are subject to change and may vary depending on unit location within the project. Furniture is displayed for illustration purposes only and does not necessarily reflect the electrical plan of the unit. All illustrations are artist's concept only. E. & O., June 2017

EASTPORT

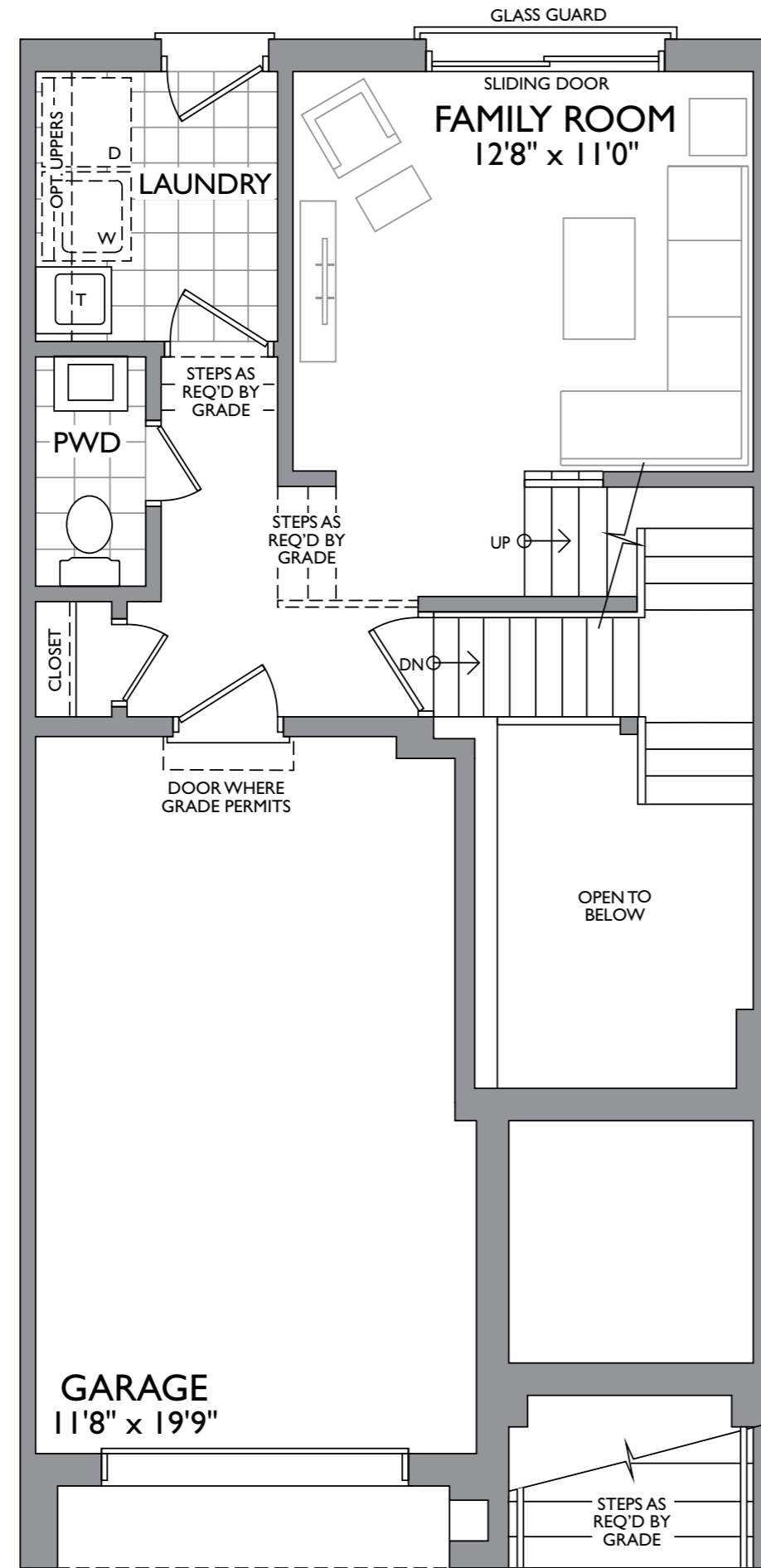
1,910 SQ.FT.



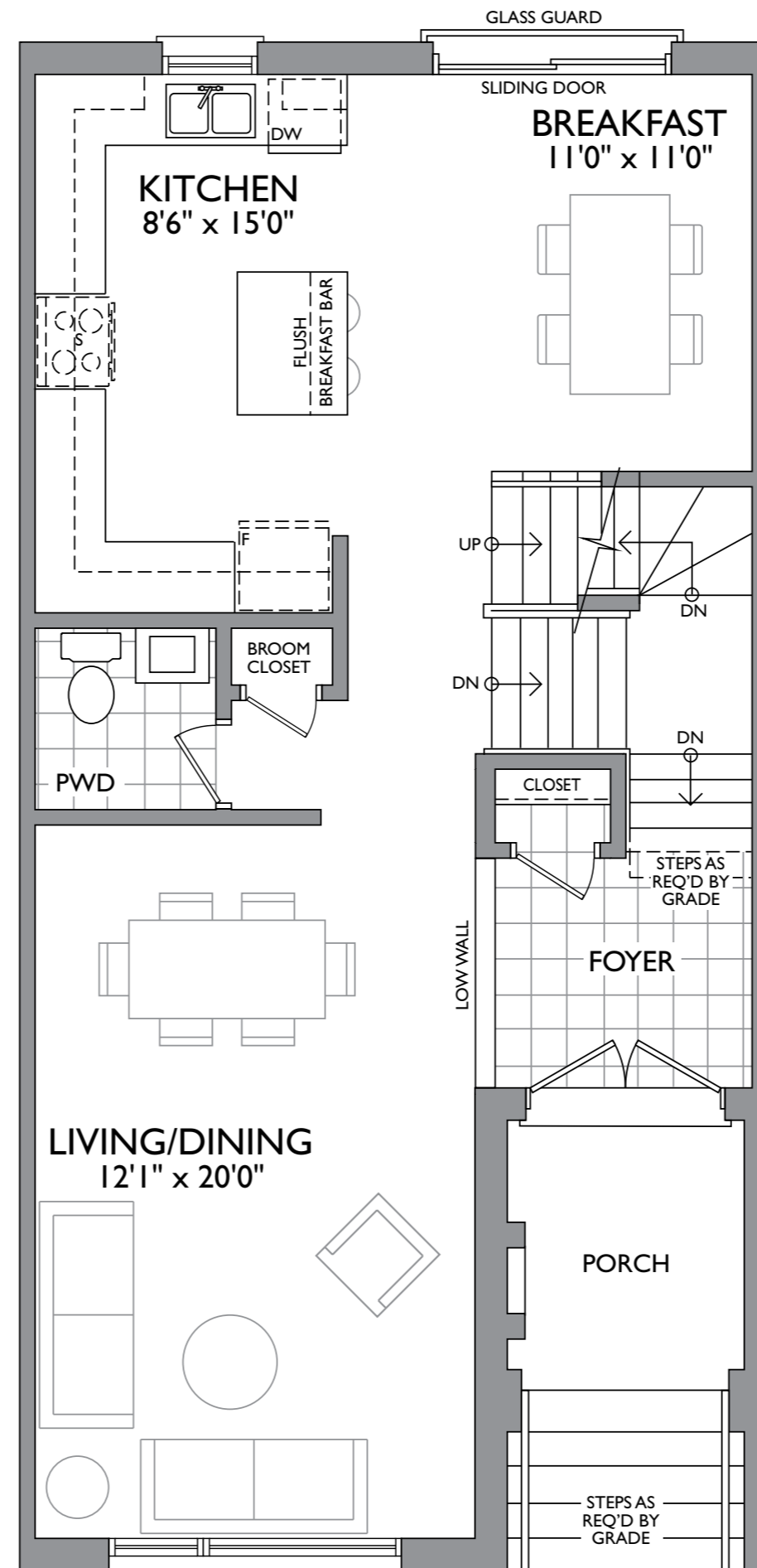
ELEVATION A



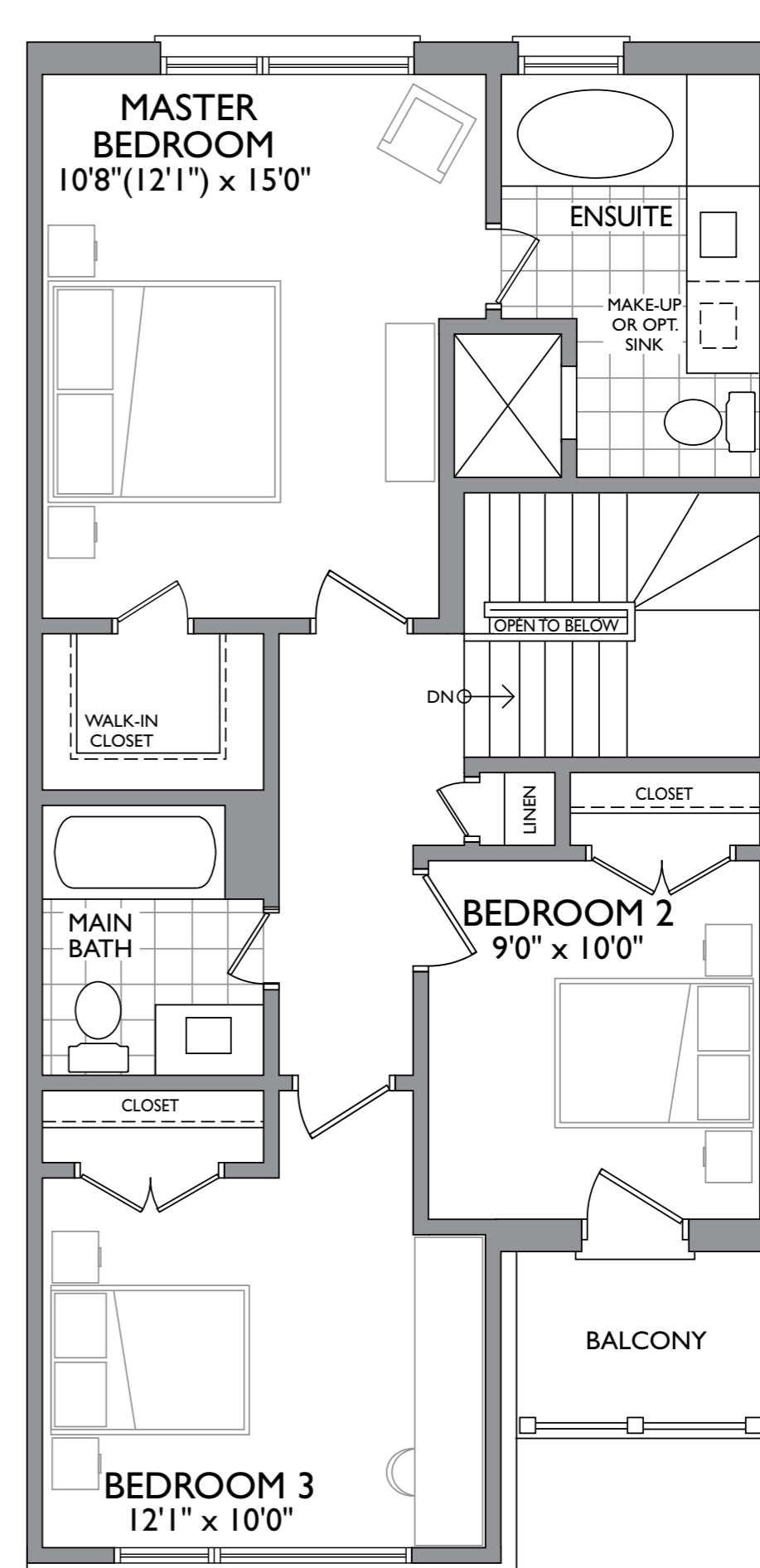
ELEVATION B



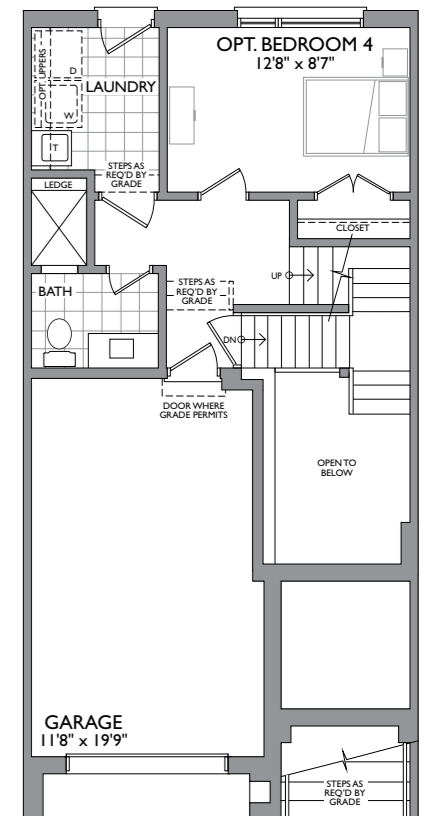
FIRST FLOOR



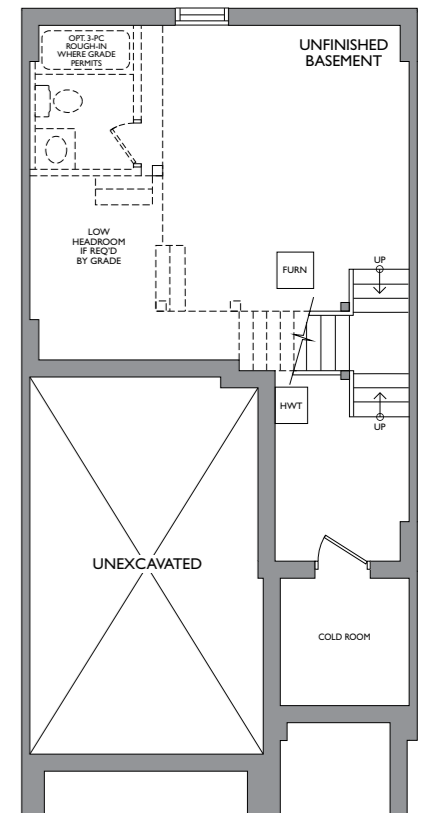
SECOND FLOOR



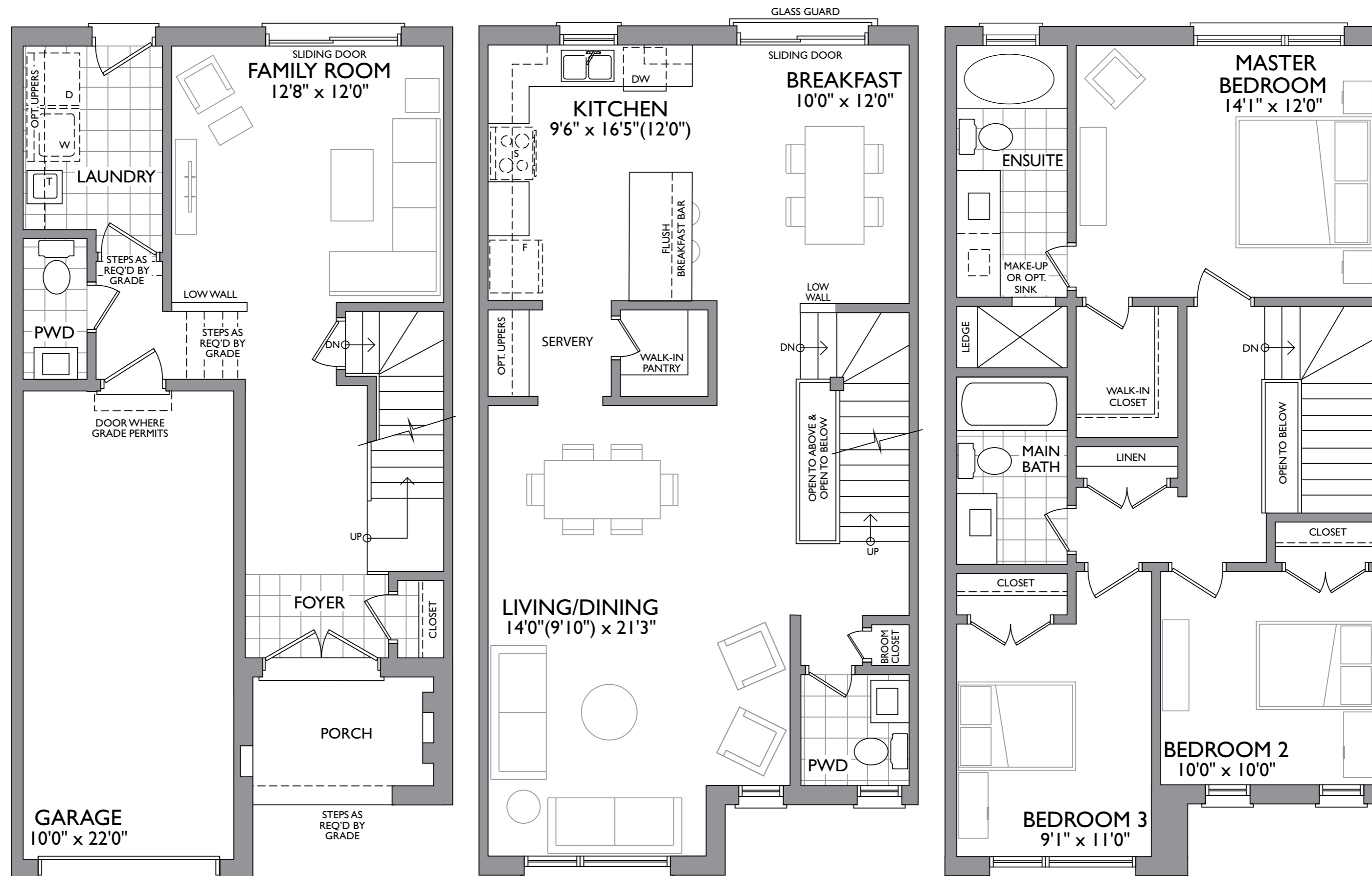
THIRD FLOOR



OPT. FIRST FLOOR



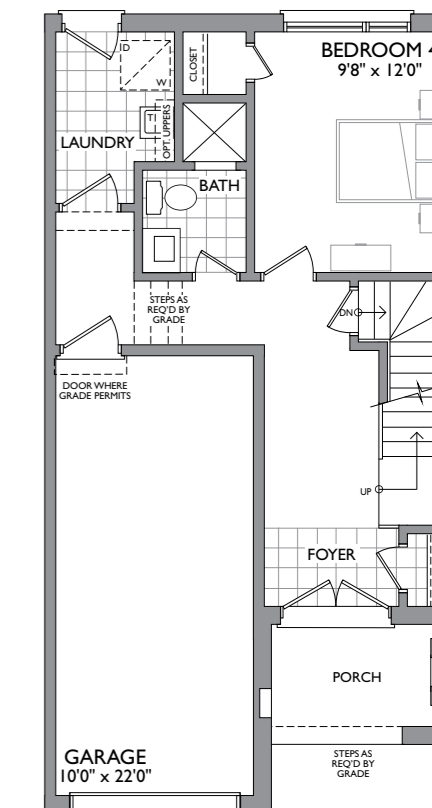
BASEMENT



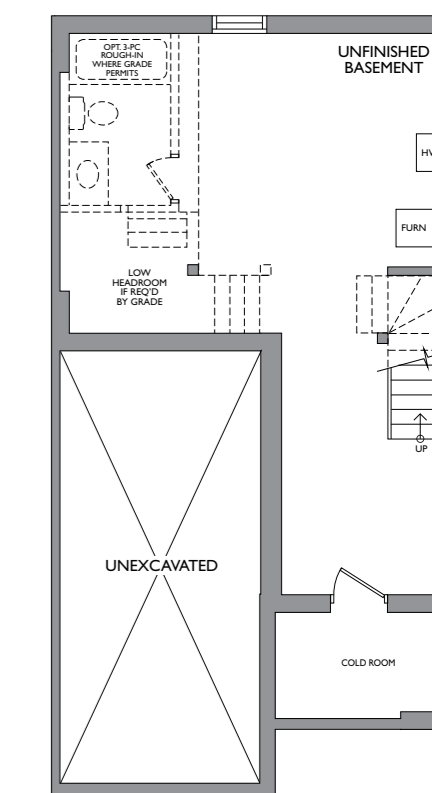
FIRST FLOOR

SECOND FLOOR

THIRD FLOOR



OPT. FIRST FLOOR



BASEMENT



MADISON
GROUP

Dimensions, materials, specifications, structural elements and floorplans are subject to change without notice. Actual usable floor space may vary from the stated floor area. Layout shown may be the reverse of the unit purchased. Exterior elevation and site plan are subject to approval by applicable authorities and the purchaser agrees to accept any change. The size and location of windows, mullions, exterior doors, patios and/or balconies are subject to change and may vary depending on unit location within the project. Furniture is displayed for illustration purposes only and does not necessarily reflect the electrical plan of the unit. All illustrations are artist's concept only. E. & O. E., June 2017.

**FRENCHMAN'S
BAY**
PICKERING

SOUTHPORT

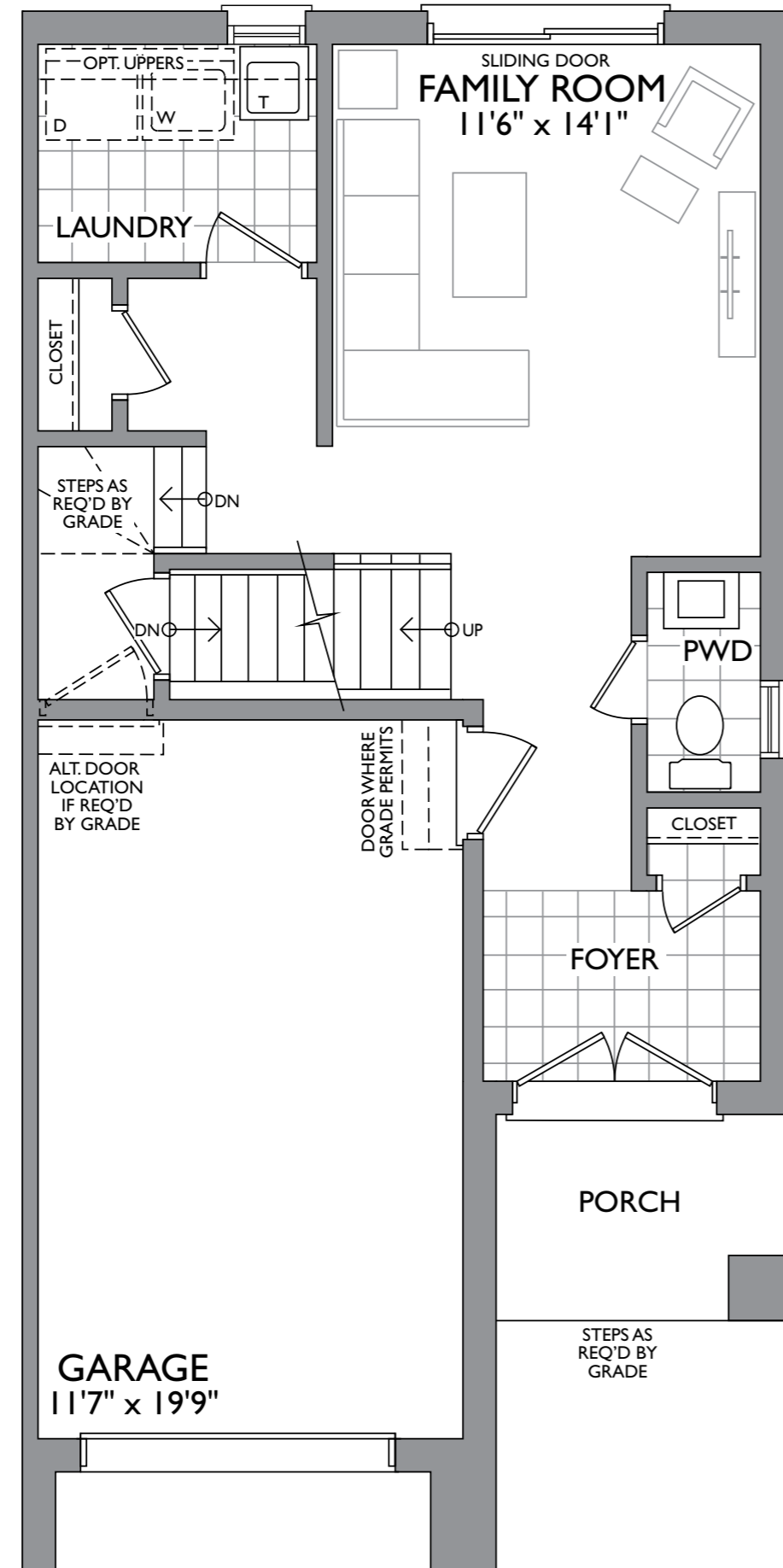
2,069 SQ.FT.



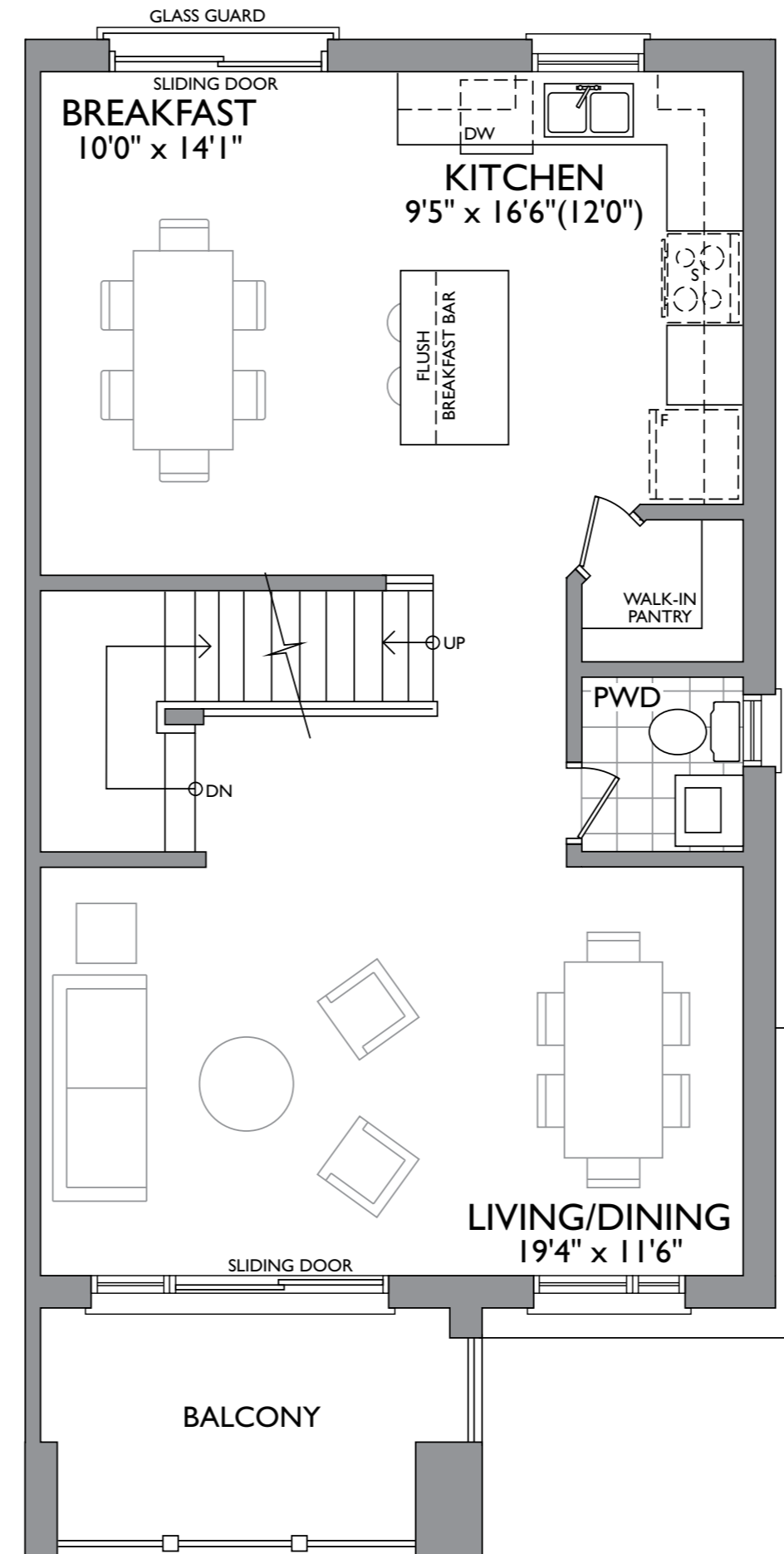
ELEVATION A



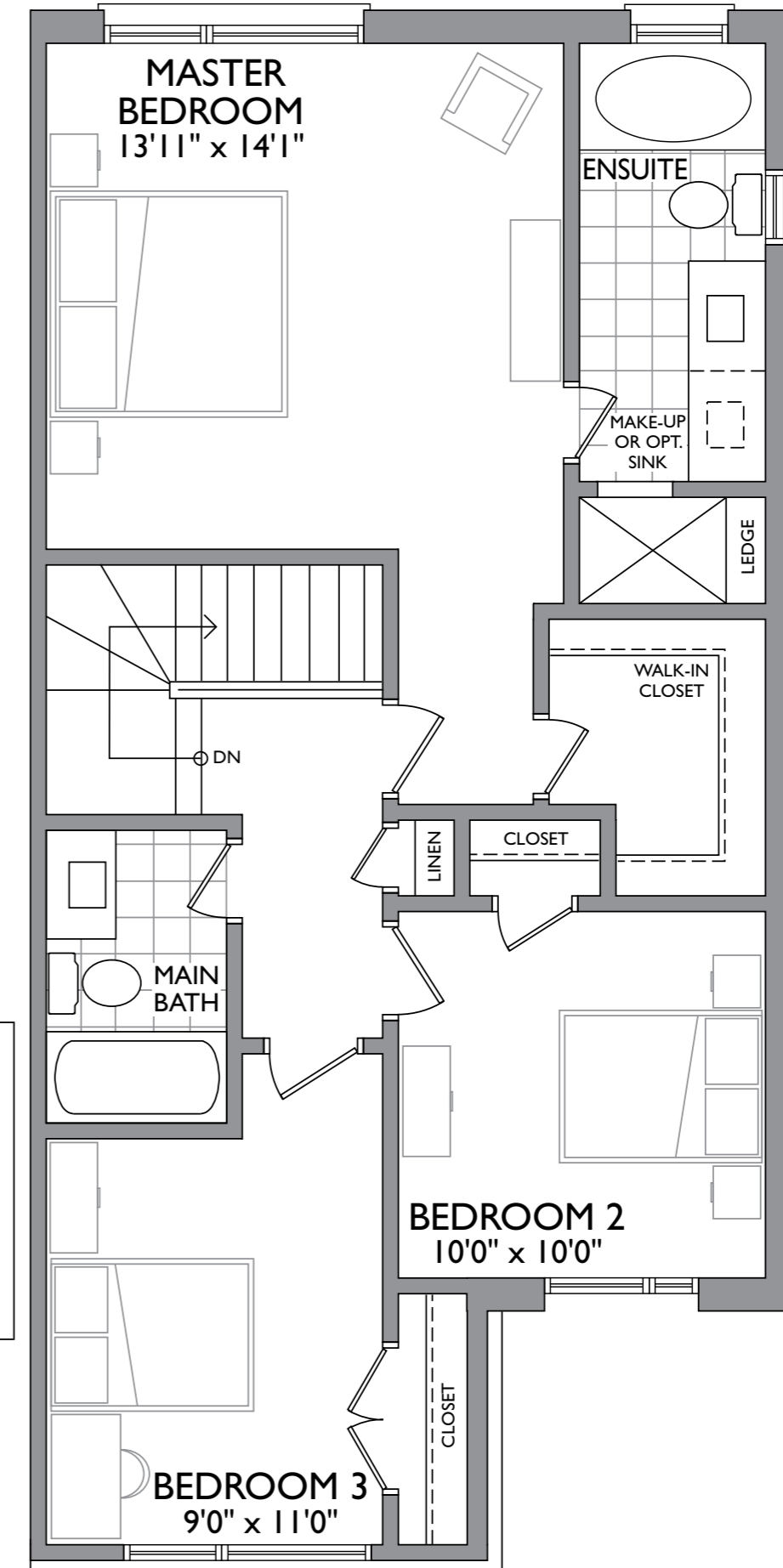
ELEVATION B



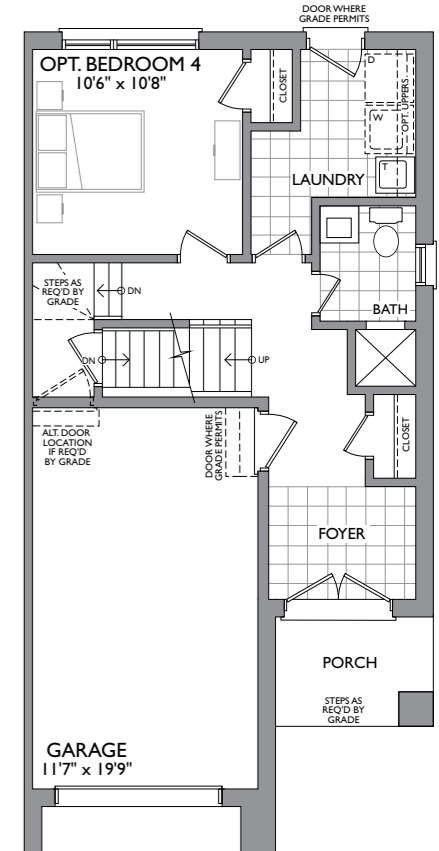
FIRST FLOOR



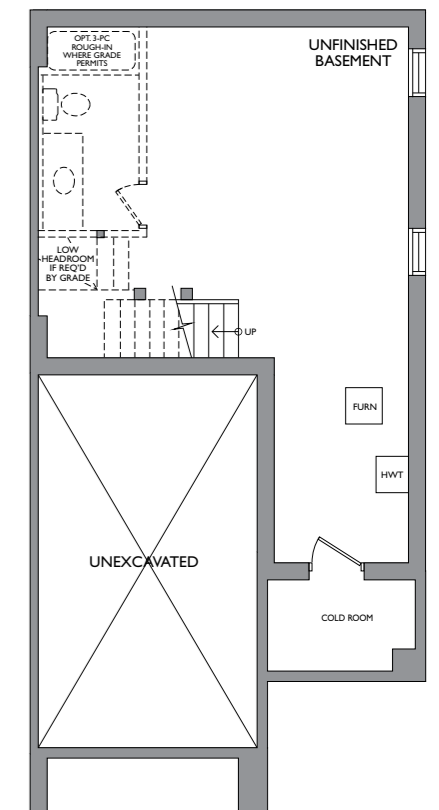
SECOND FLOOR



THIRD FLOOR



OPT. FIRST FLOOR



BASEMENT

Dimensions, materials, specifications, structural elements and floorplans are subject to change without notice. Actual usable floor space may vary from the stated floor area. Layout shown may be the reverse of the unit purchased. Exterior elevation and site plan are subject to approval by applicable authorities and the purchaser agrees to accept any change. The size and location of windows, mullions, exterior doors, patios and/or balconies are subject to change and may vary depending on unit location within the project. Furniture is displayed for illustration purposes only and does not necessarily reflect the electrical plan of the unit. All illustrations are artist's concept only. E. & O. E., June 2017.



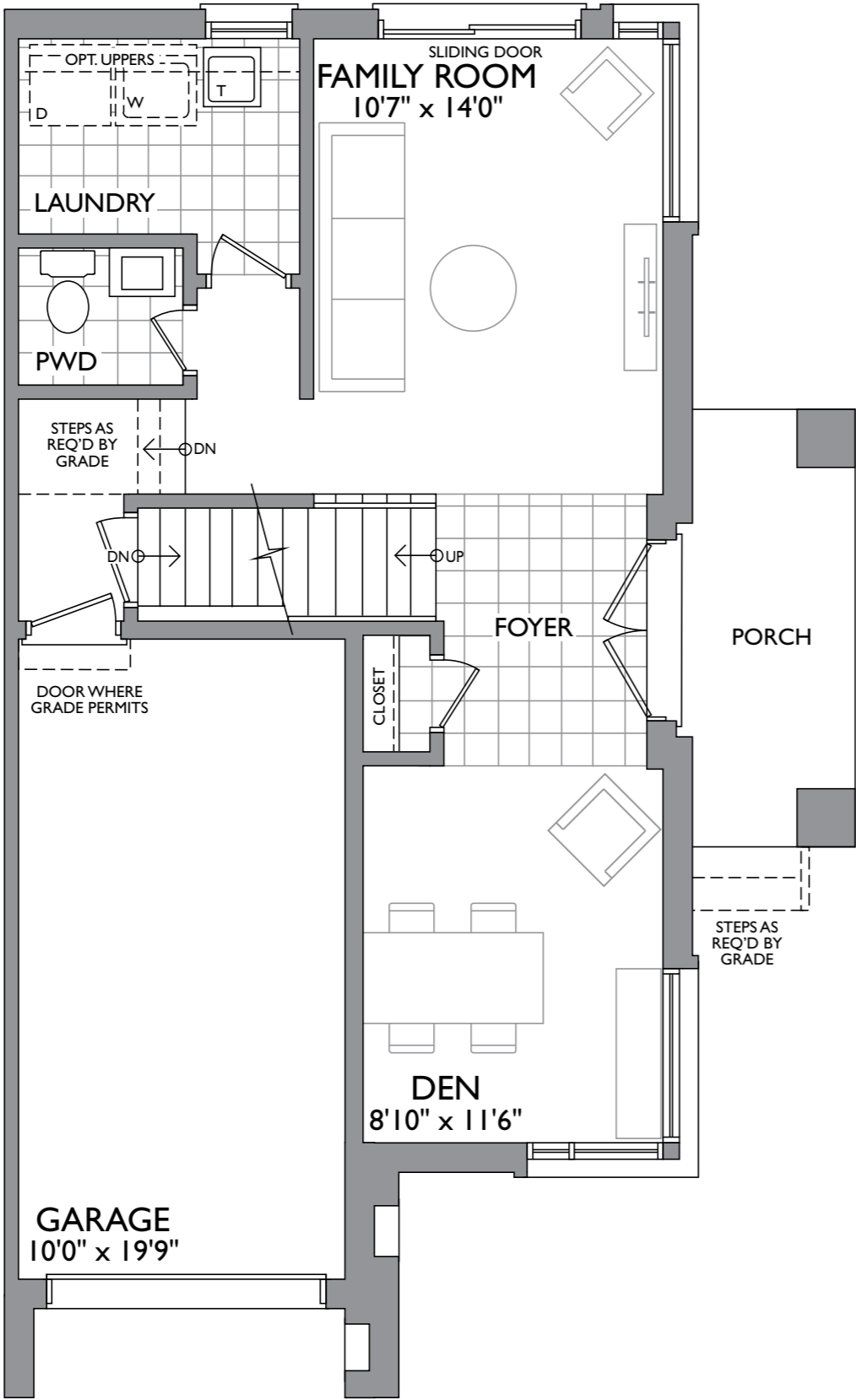
MADISON
GROUP

EDGEPORT

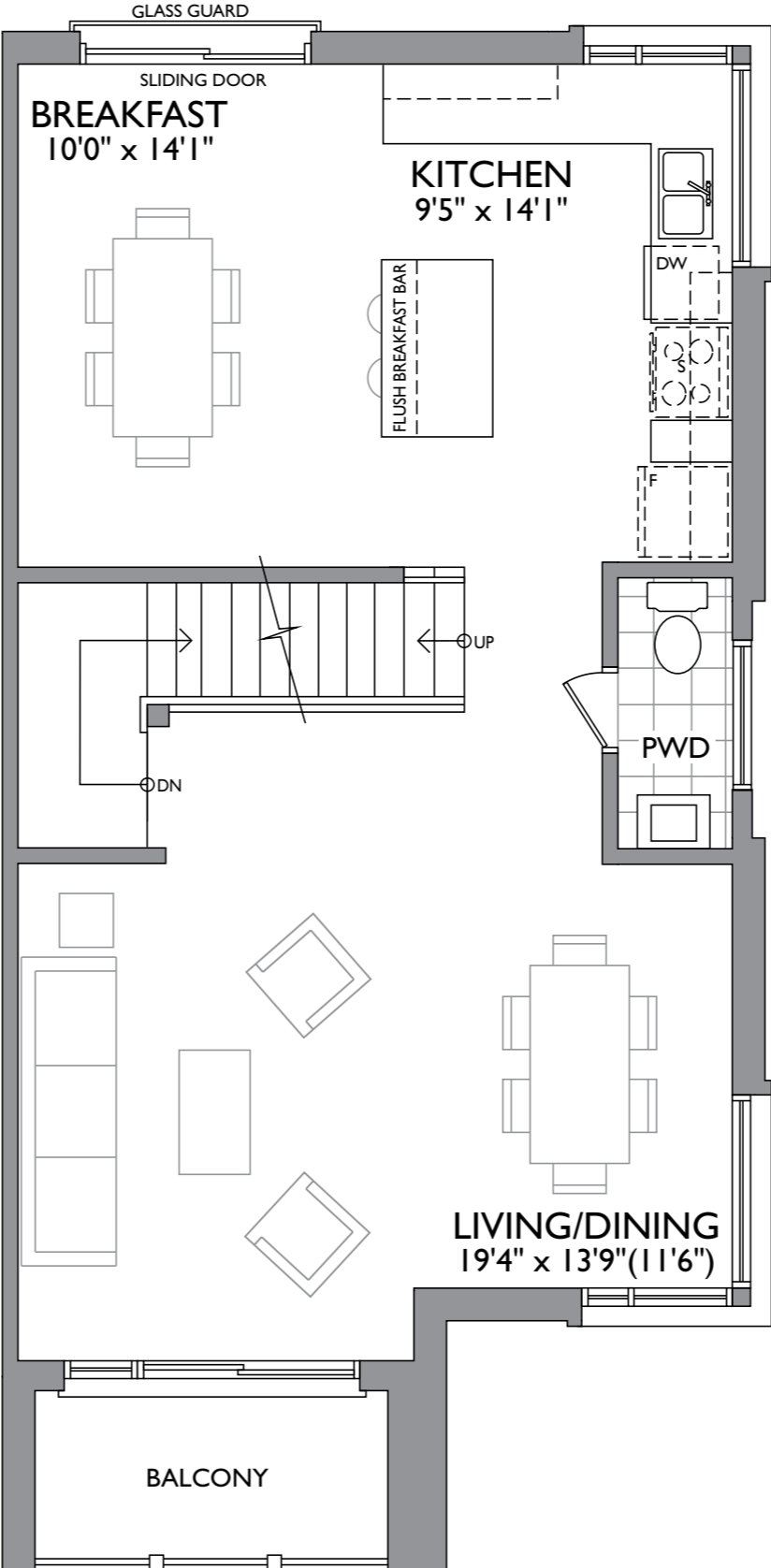
2,155 SQ.FT.



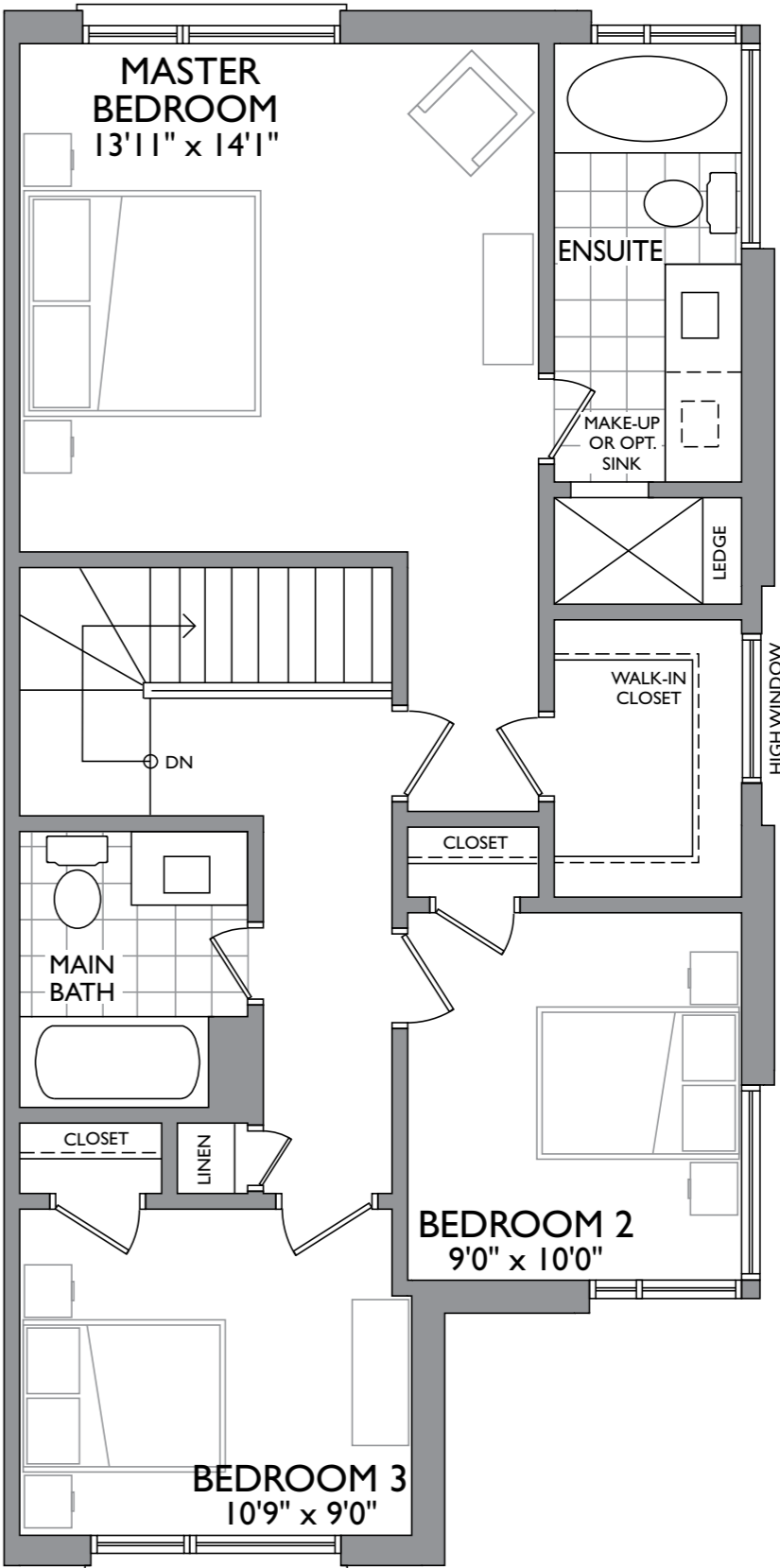
ELEVATION B



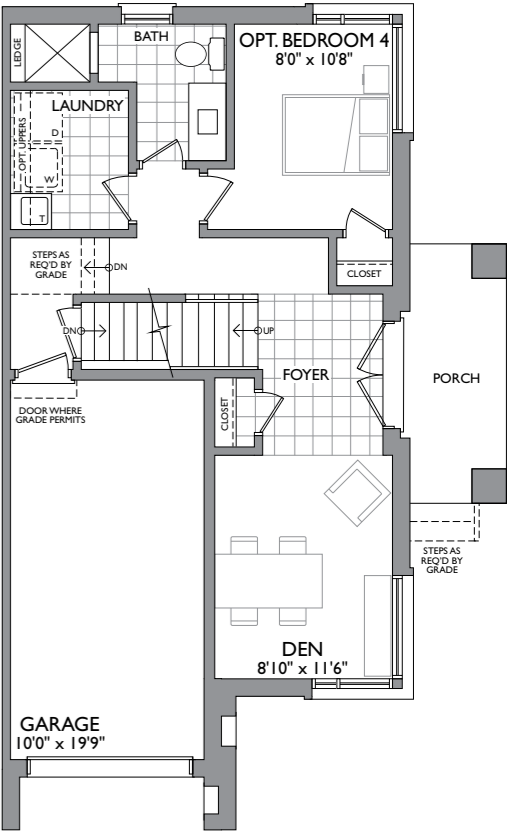
FIRST FLOOR



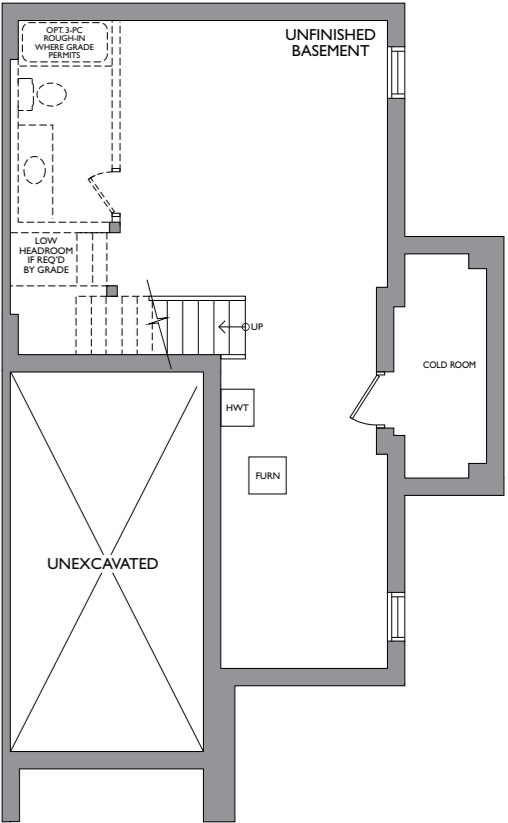
SECOND FLOOR



THIRD FLOOR



OPT. FIRST FLOOR



BASEMENT

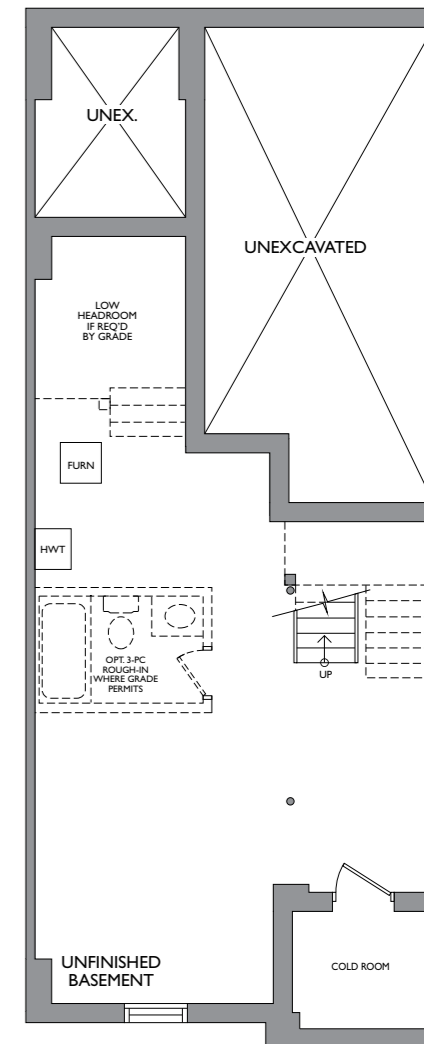
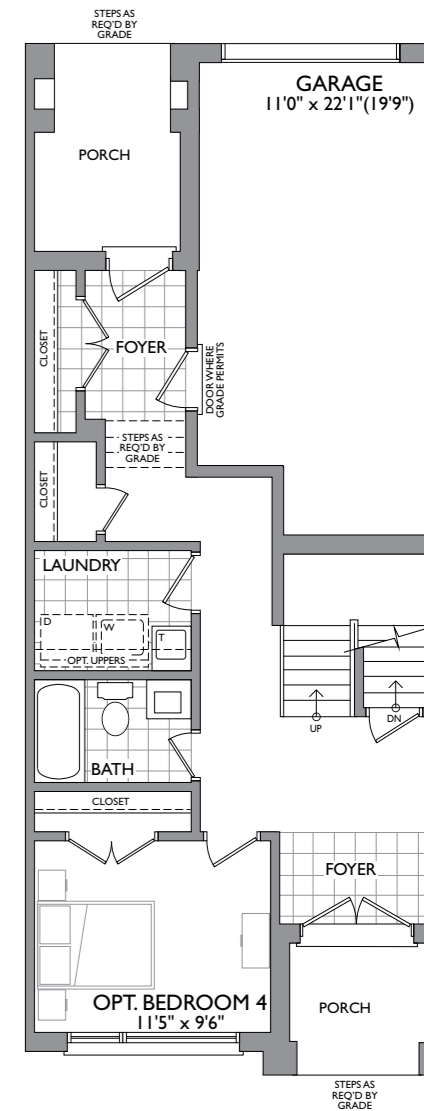
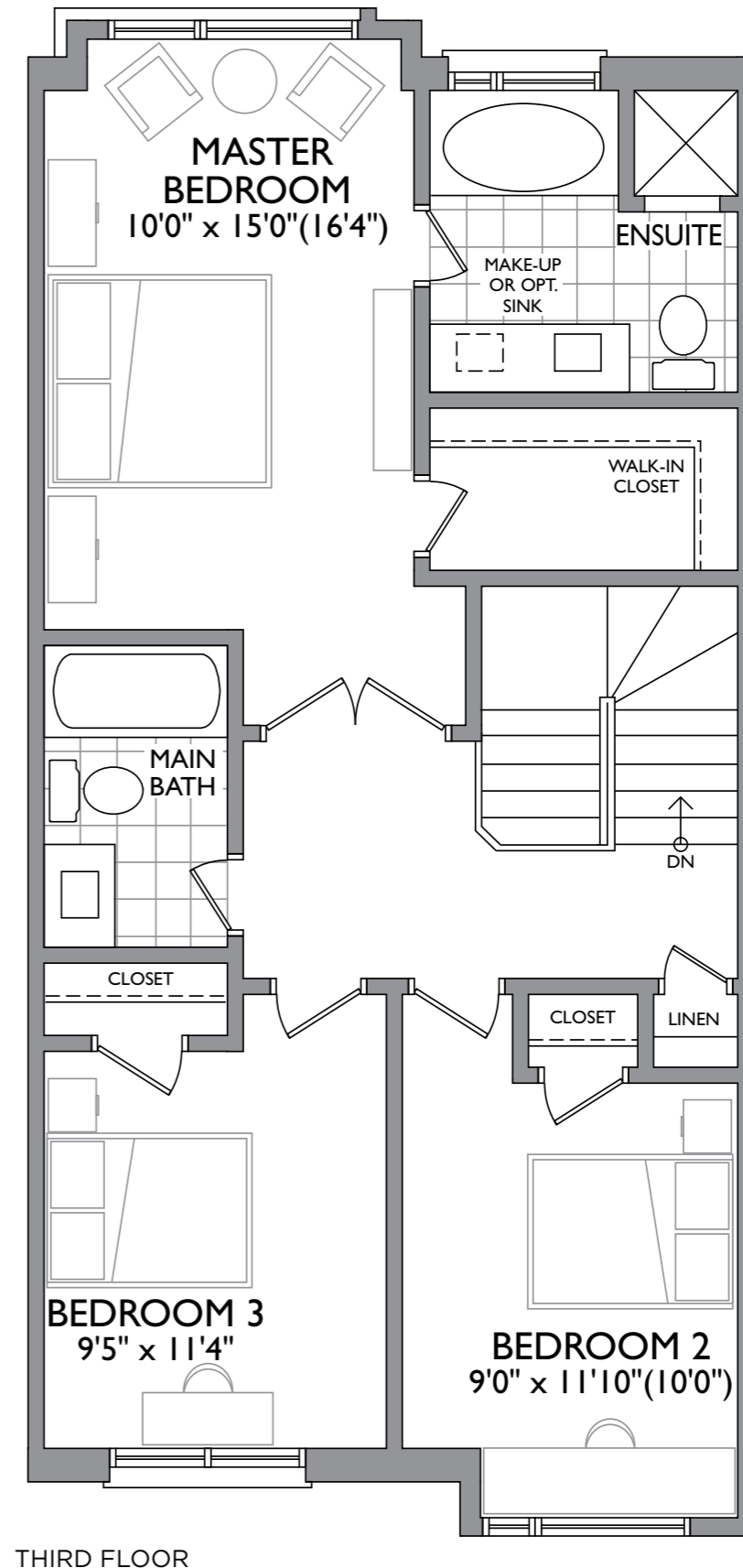
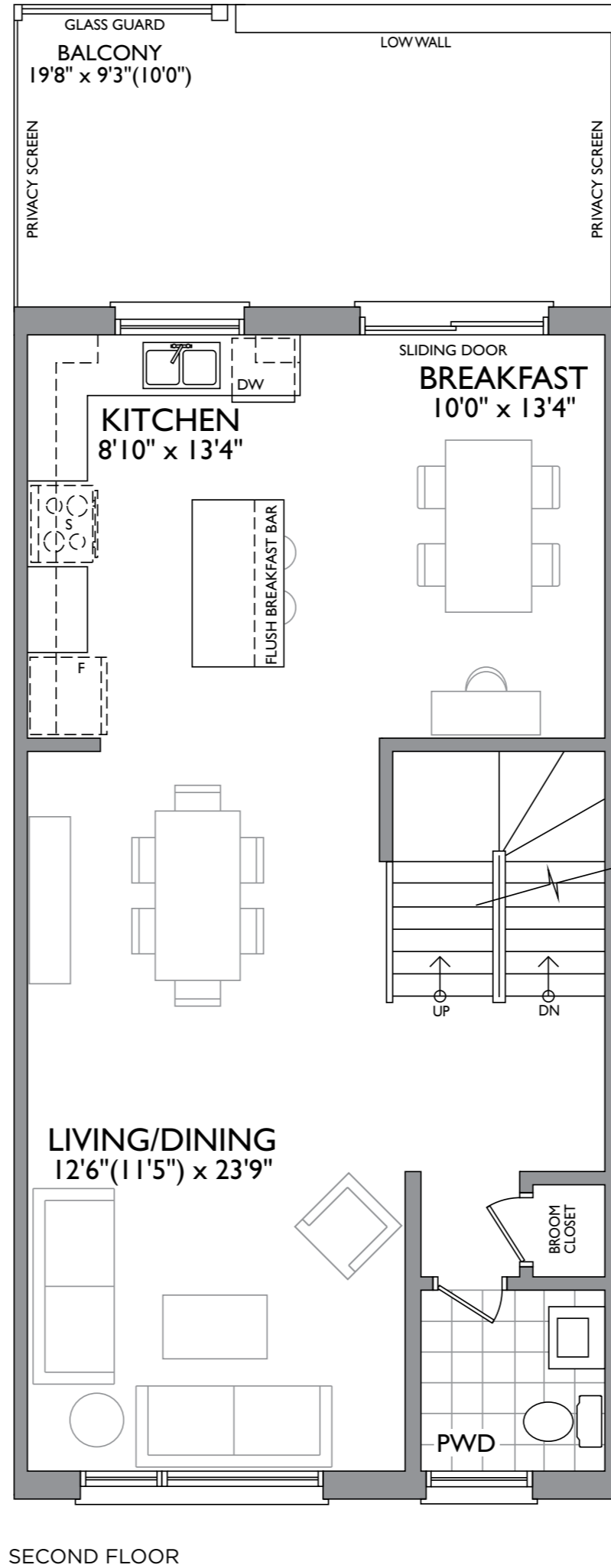
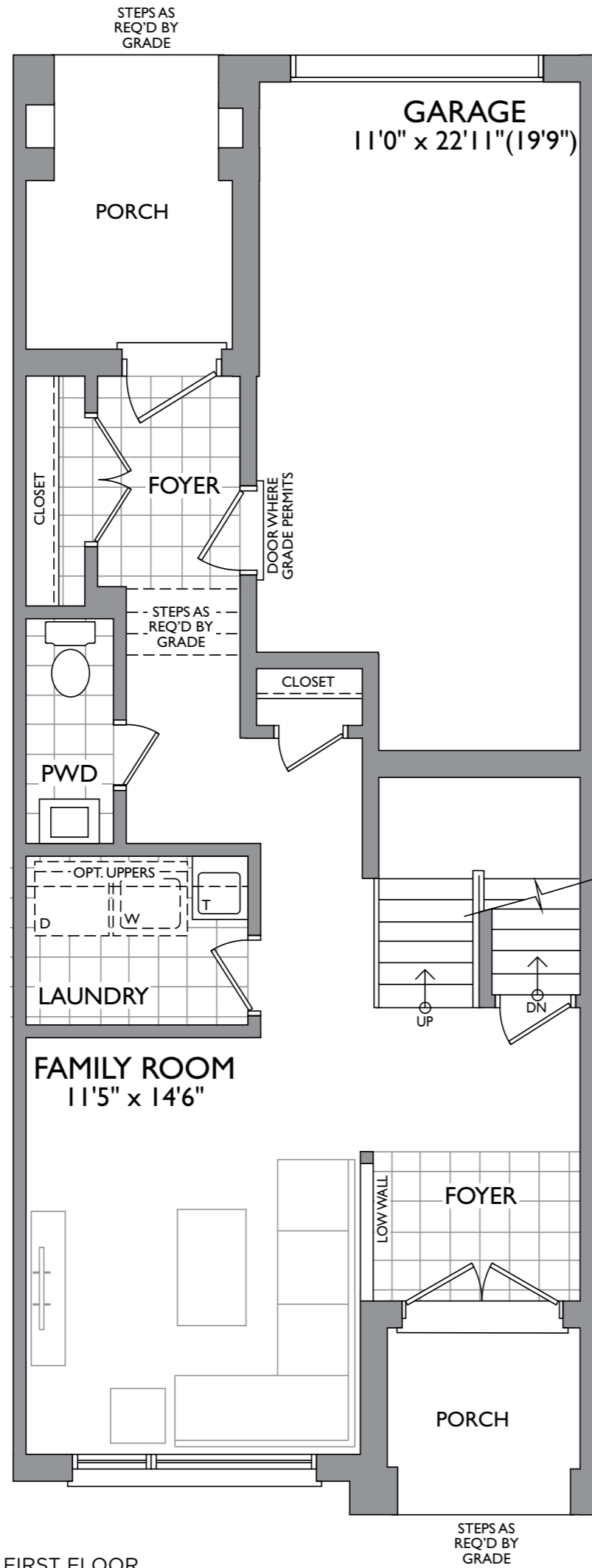
Dimensions, materials, specifications, structural elements and floorplans are subject to change without notice. Actual usable floor space may vary from the stated floor area. Layout shown may be the reverse of the unit purchased. Exterior elevation and site plan are subject to approval by applicable authorities and the purchaser agrees to accept any change. The size and location of windows, mullions, exterior doors, patios and/or balconies are subject to change and may vary depending on unit location within the project. Furniture is displayed for illustration purposes only and does not necessarily reflect the electrical plan of the unit. All illustrations are artist's concept only. E. & O. E., June 2017.

BAYFIELD

2,172 SQ.FT.



ELEVATION A



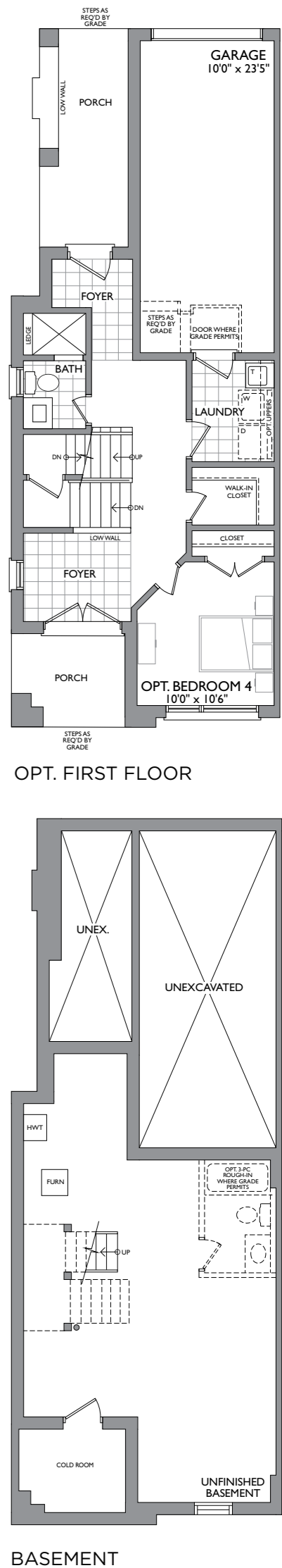
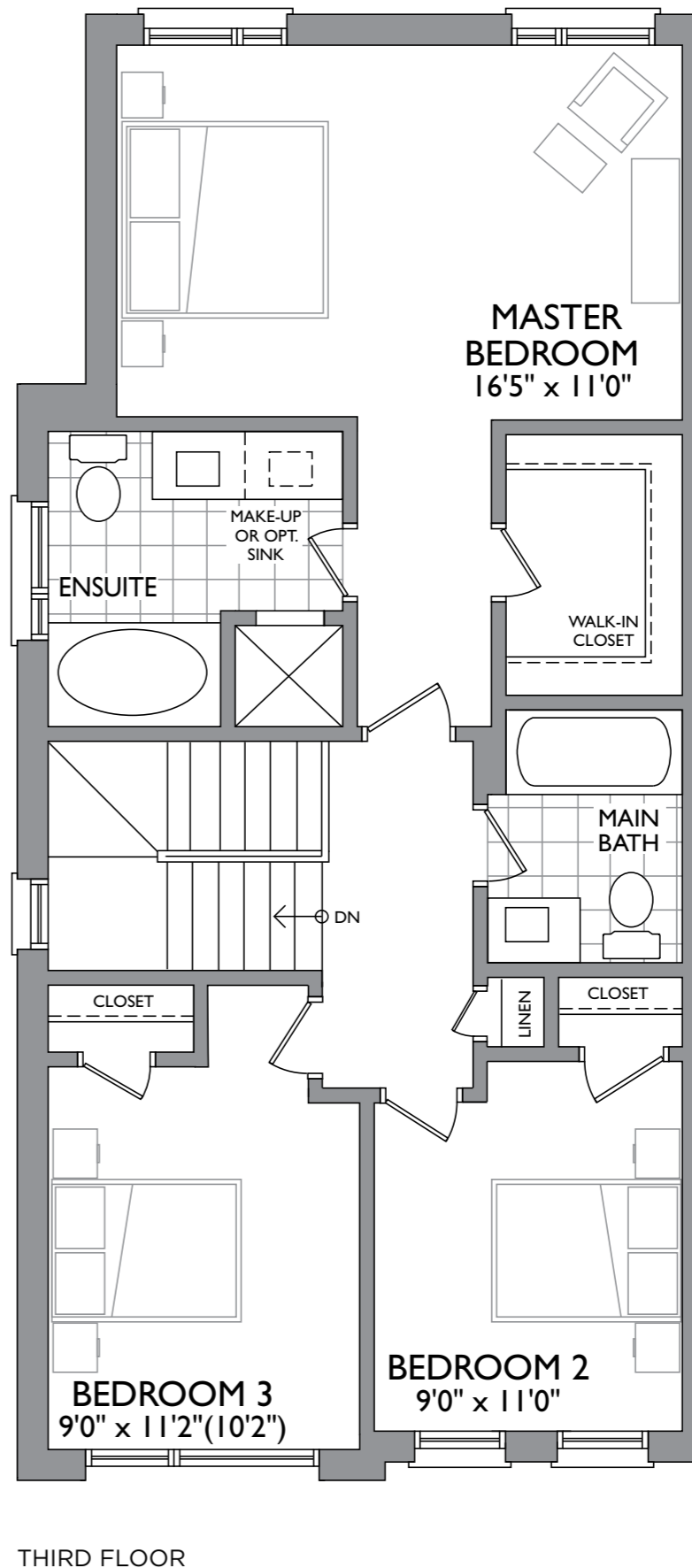
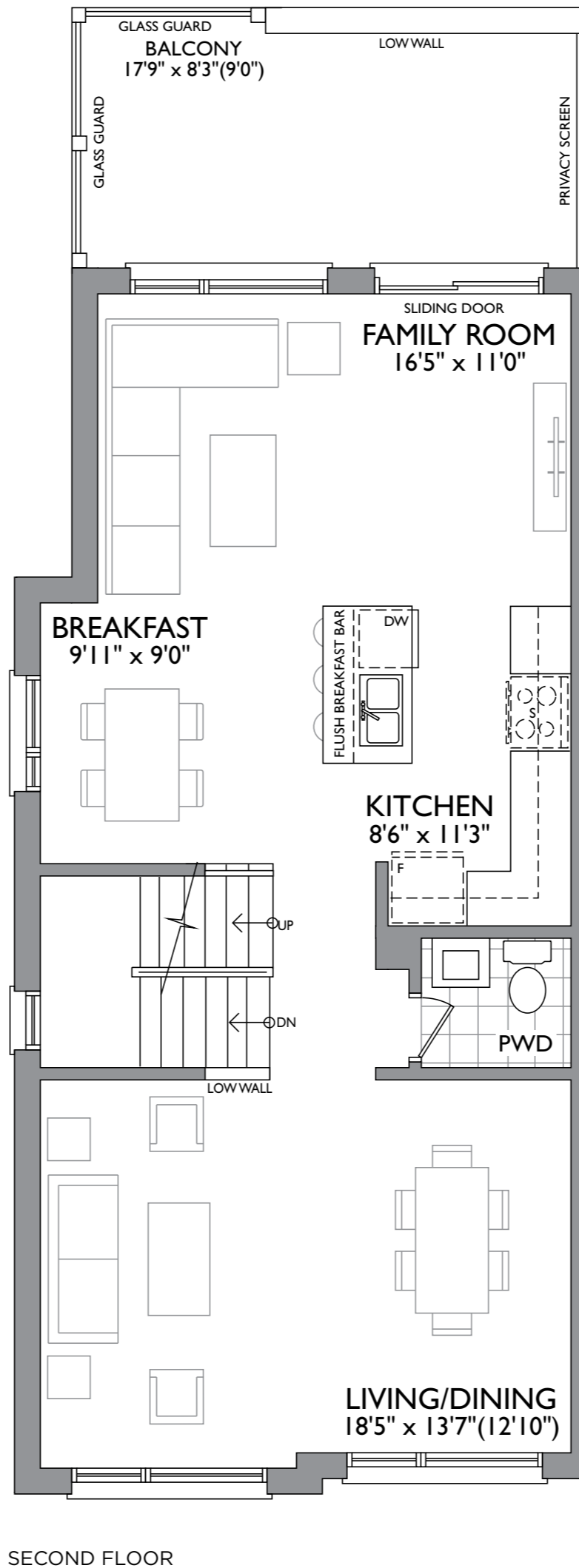
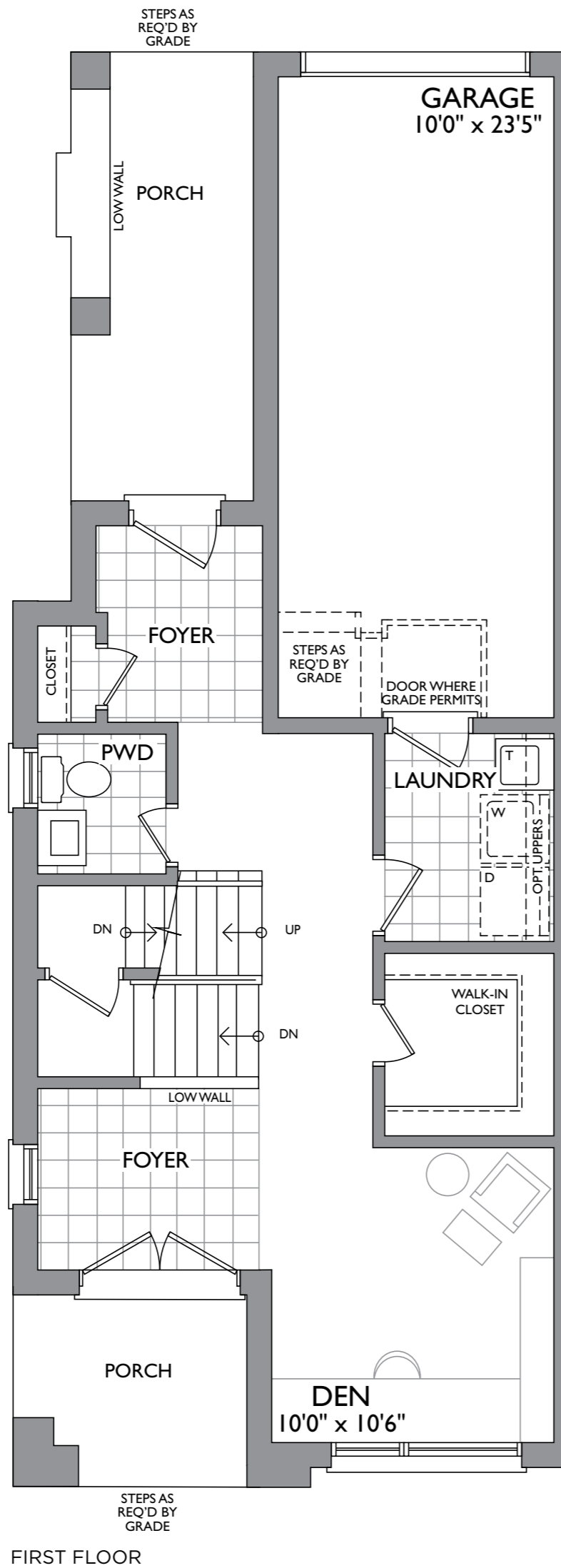
Dimensions, materials, specifications, structural elements and floorplans are subject to change without notice. Actual usable floor space may vary from the stated floor area. Layout shown may be the reverse of the unit purchased. Exterior elevation and site plan are subject to approval by applicable authorities and the purchaser agrees to accept any change. The size and location of windows, mullions, exterior doors, patios and/or balconies are subject to change and may vary depending on unit location within the project. Furniture is displayed for illustration purposes only and does not necessarily reflect the electrical plan of the unit. All illustrations are artist's concept only. E. & O. E., June 2017.

BAYSHORE

2,204 SQ.FT.

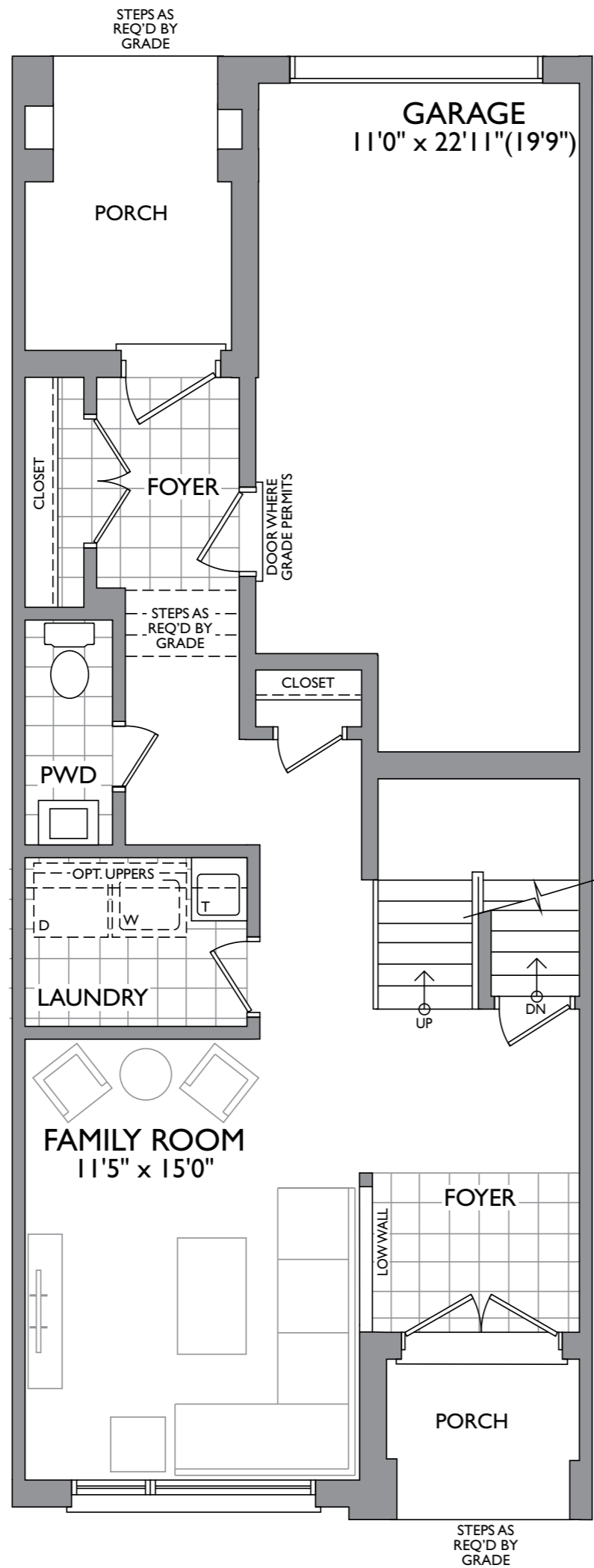


ELEVATION A

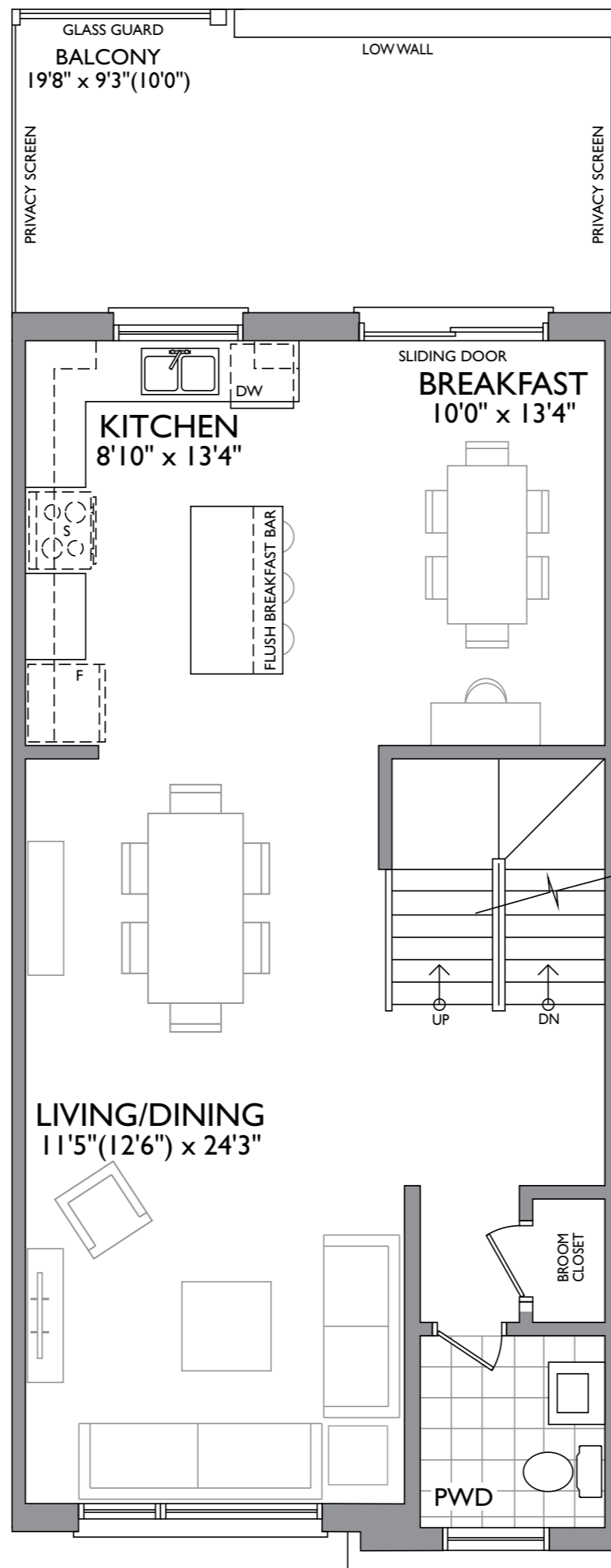


BAYWATER

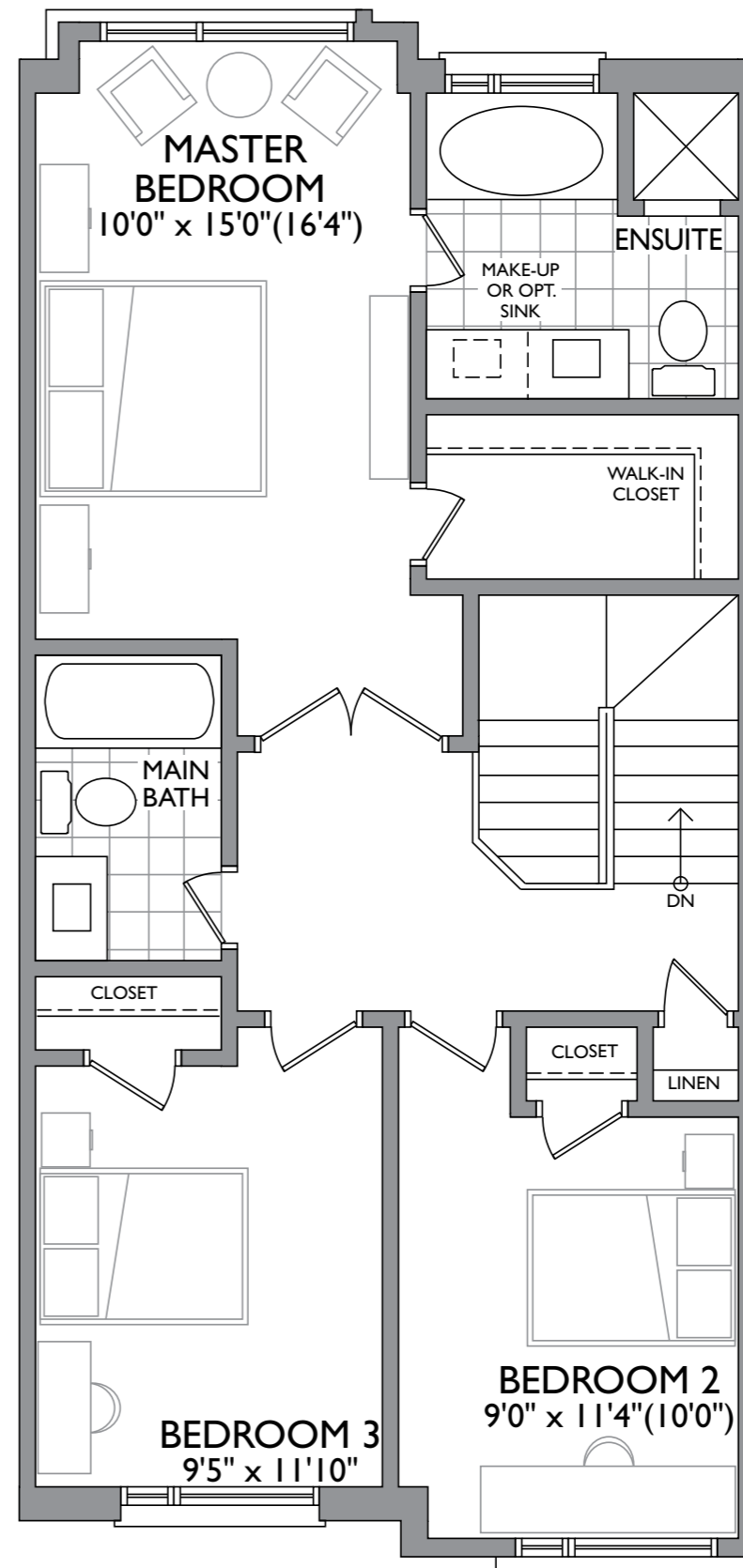
2,210 SQ.FT.



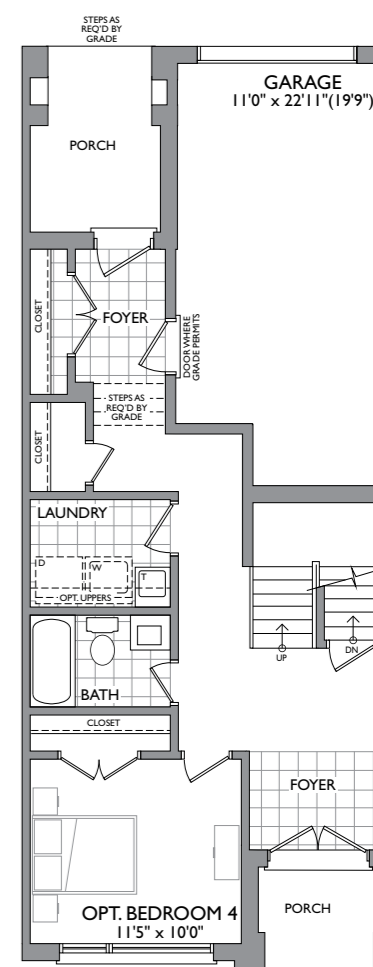
FIRST FLOOR



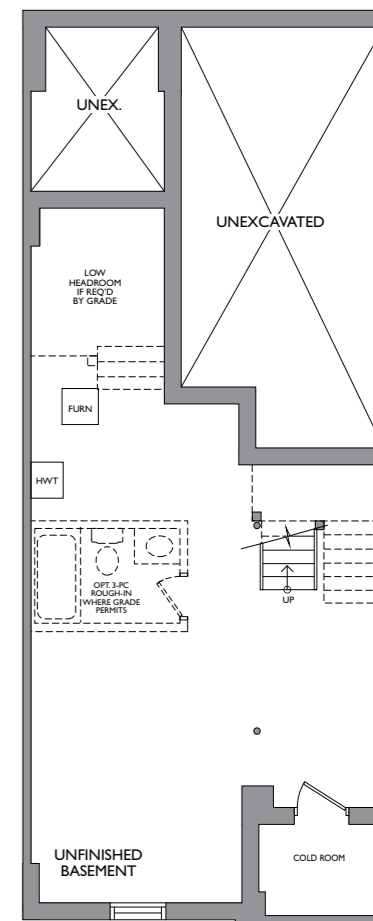
SECOND FLOOR
ELEV. A



THIRD FLOOR
ELEV. A



OPT. FIRST FLOOR



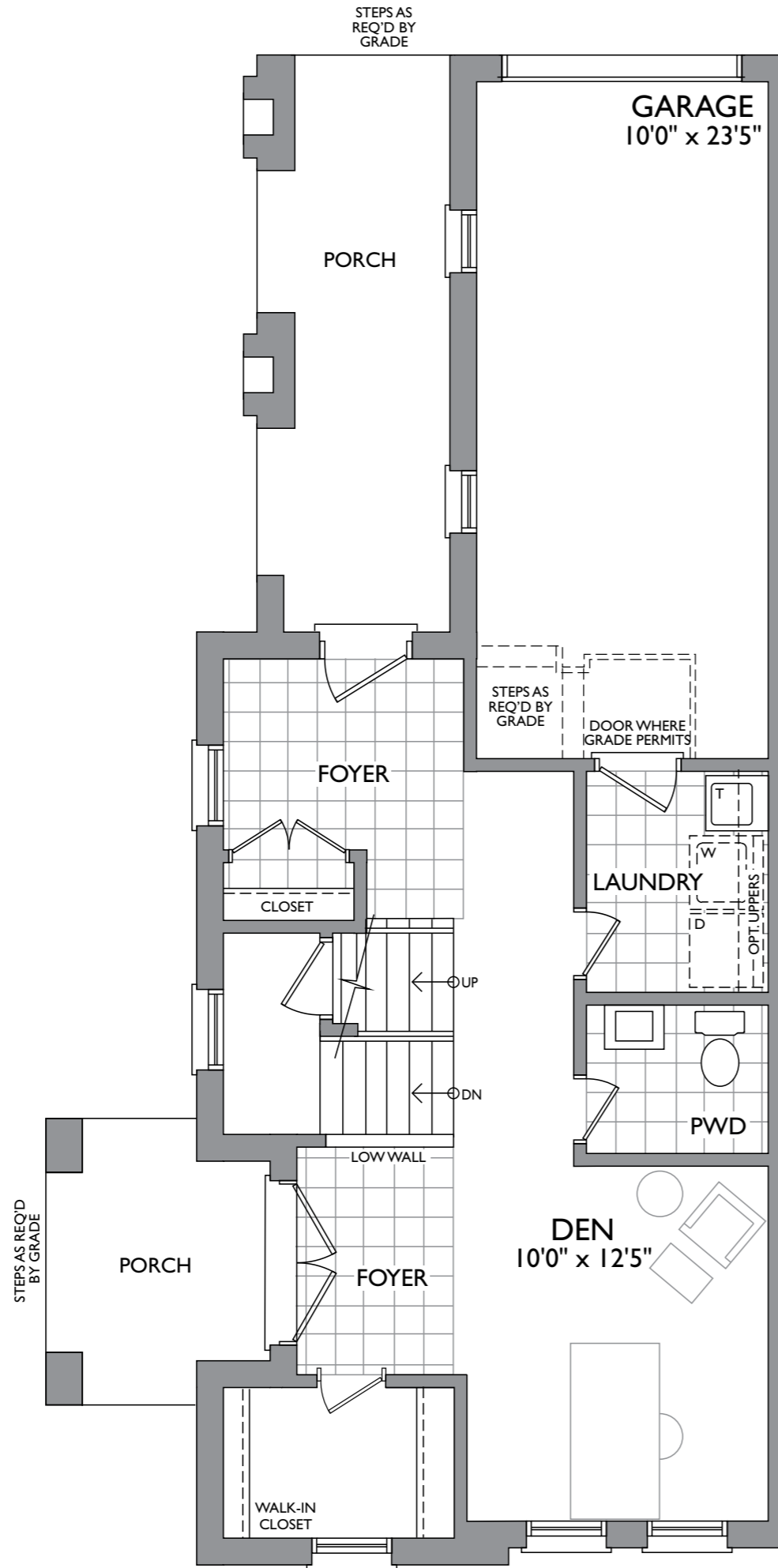
BASEMENT
ELEV. A

BAYSIDE

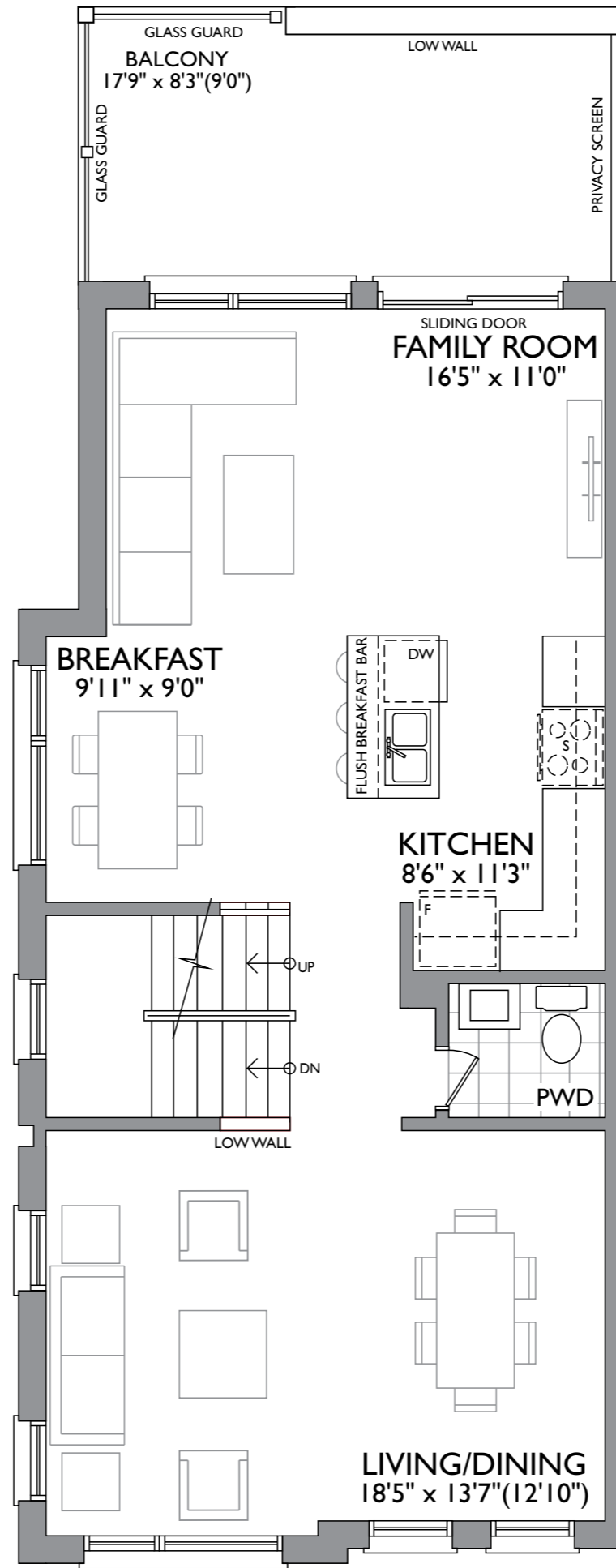
2,215 SQ.FT.



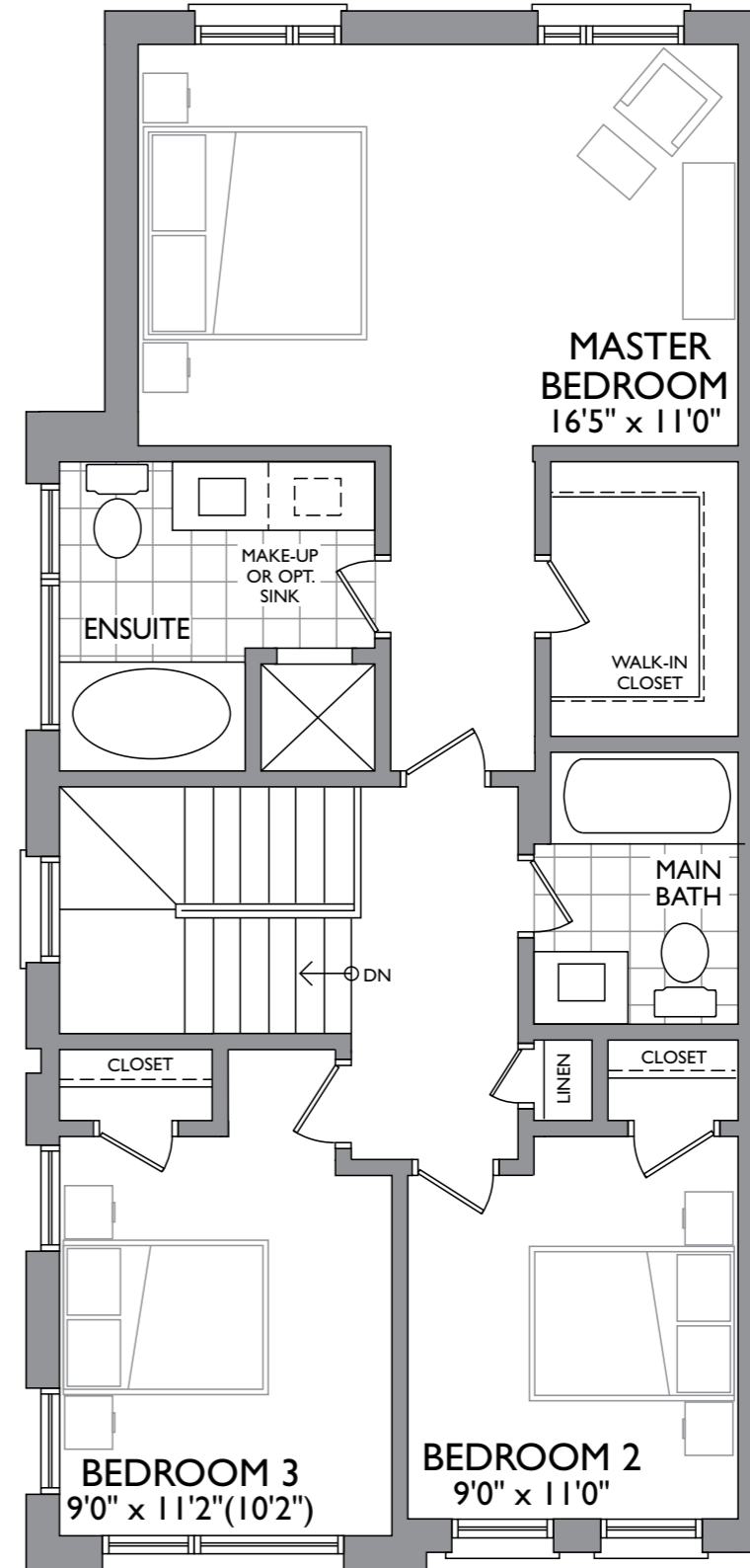
ELEVATION A



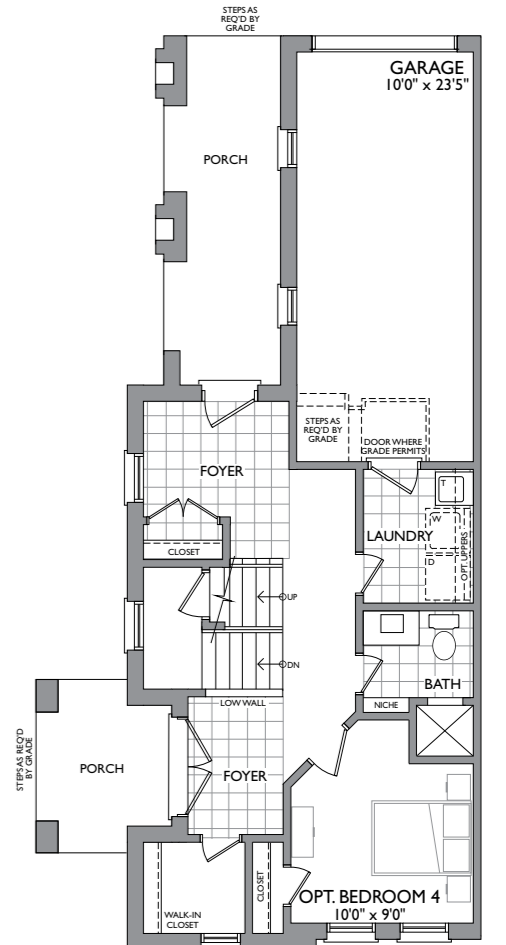
FIRST FLOOR



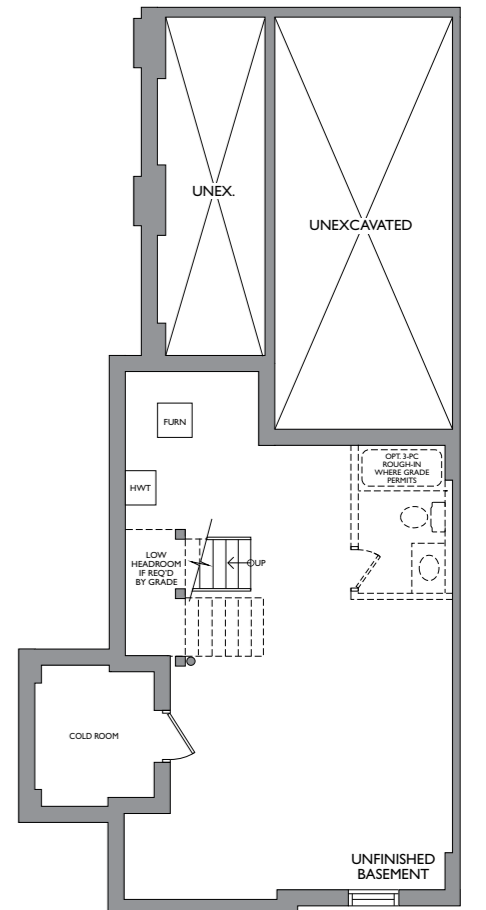
SECOND FLOOR



THIRD FLOOR



OPT. FIRST FLOOR



BASEMENT