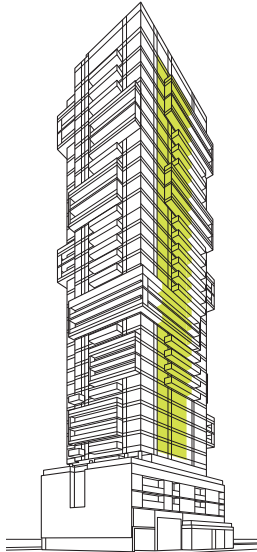


eva

01 / two bedroom / 594 sf

WY



southeast

dundas street east

mutual street



floors 24-26, 30

shuter street



floors 18-23, 27-29



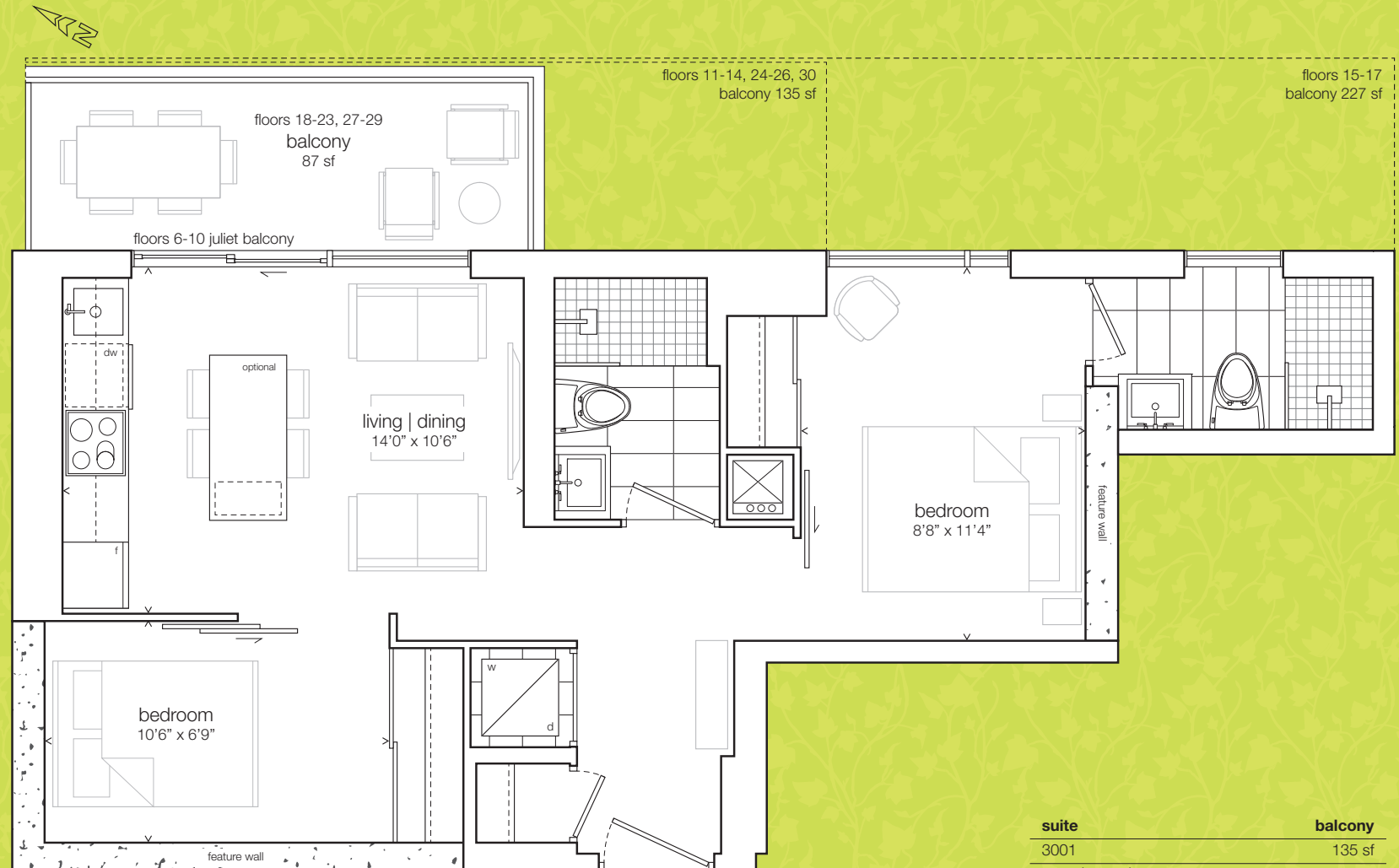
floors 15-17



floors 11-14



floors 6-10



1801, 1901, 2001, 2101, 2201, 2301, 2701, 2801, 2901 shown

suite	balcony
3001	135 sf
2701 2801 2901	87 sf
2401 2501 2601	135 sf
1801 1901 2001 2101 2201 2301	87 sf
1501 1601 1701	227 sf
1101 1201 1301 1401	135 sf
601 701 801 901 1001	juliet

all sizes, dimensions and specifications are subject to change without notice. this plan is not to scale and is subject to architectural review and revision. in order to comply with building site conditions and municipal, structural, vendor and/or architectural requirements, actual living areas may vary from floor area stated. floor area has been measured and may vary in accordance with bulletin #22 published by the tarion warranty corporation. window location, size and type may vary without notice. all furniture shown on marketing plans are not included. purchasers acknowledge that the dwelling units with terraces or balconies may contain an interior step up for access to such terraces or balconies. the balcony area finishing material and any dividers, where applicable, may vary from suite to suite based on design and material specifications. balcony dimensions, configuration and location are estimates only and may not be exactly as shown. location of columns, size and type may vary without notice. e.&o.e.

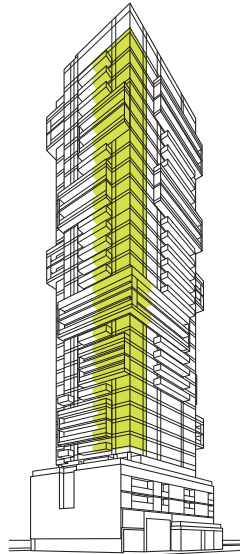
eva

eva is a climbing ivy featuring grey-green leaves with a broad white border. The three-lobed leaves remain green all year round.



cora

02 / one bedroom + den / 598 sf



southeast

dundas street east

mutual street



floors 30

shuter street



floors 27-29



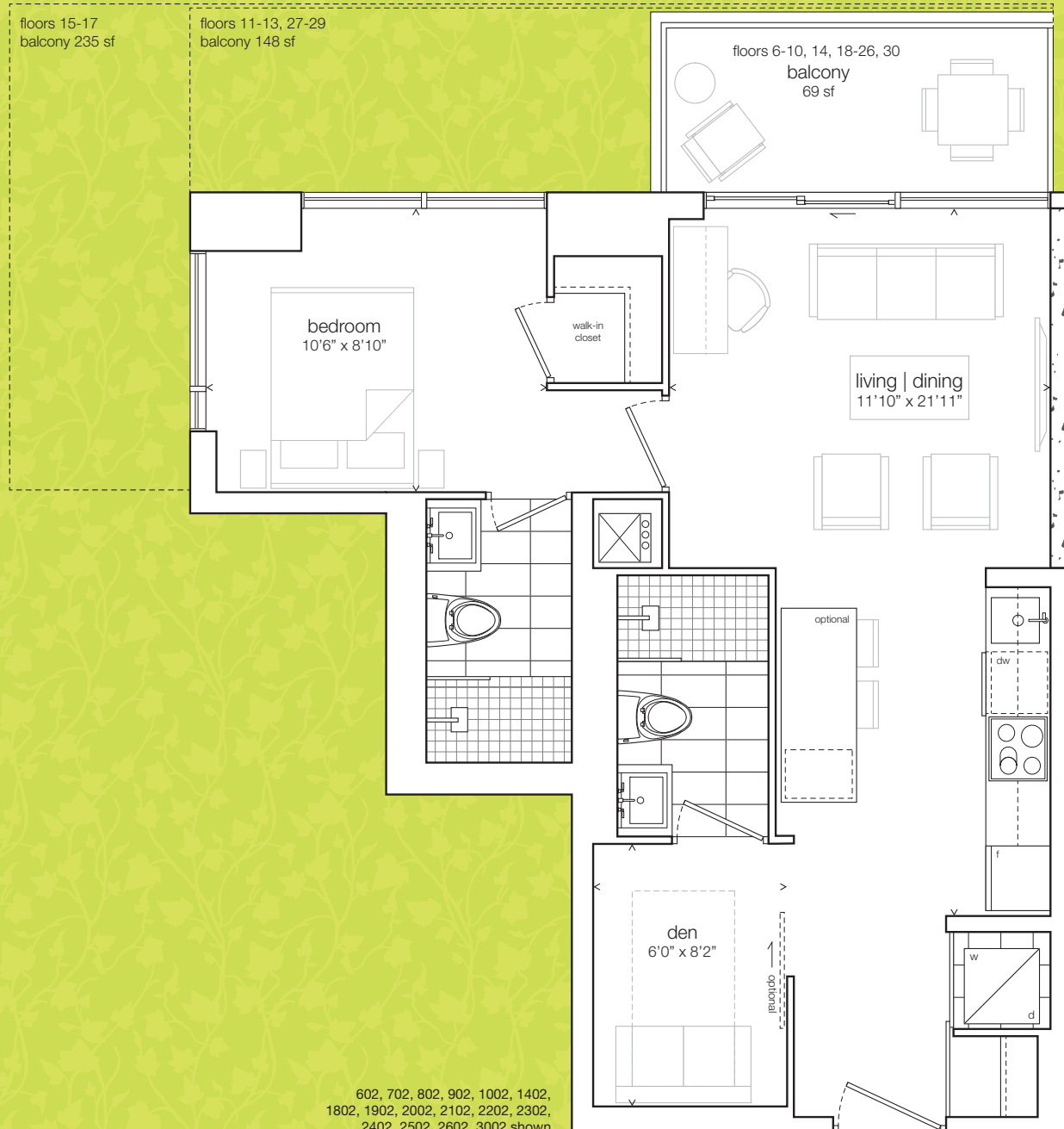
floors 15-17



floors 11-13



floors 6-10, 14, 18-26



suite	balcony
3002	69 sf
2702 2802 2902	148 sf
2302 2402 2502 2602	69 sf
1802 1902 2002 2102 2202	
1502 1602 1702	235 sf
1402	69 sf
1102 1202 1302	148 sf
602 702 802 902 1002	69 sf

all sizes, dimensions and specifications are subject to change without notice. this plan is not to scale and is subject to architectural review and revision. in order to comply with building site conditions and municipal, structural, vendor and/or architectural requirements, actual living areas may vary from floor area stated. floor area has been measured and may vary in accordance with bulletin #22 published by the tarion warranty corporation. window location, size and type may vary without notice. all furniture shown on marketing plans are not included. purchasers acknowledge that the dwelling units with terraces or balconies may contain an interior step up for access to such terraces or balconies. the balcony area finishing material and any dividers, where applicable, may vary from suite to suite based on design and material specifications. balcony dimensions, configuration and location are estimates only and may not be exactly as shown. location of columns, size and type may vary without notice. e.&o.e.

notes

cora

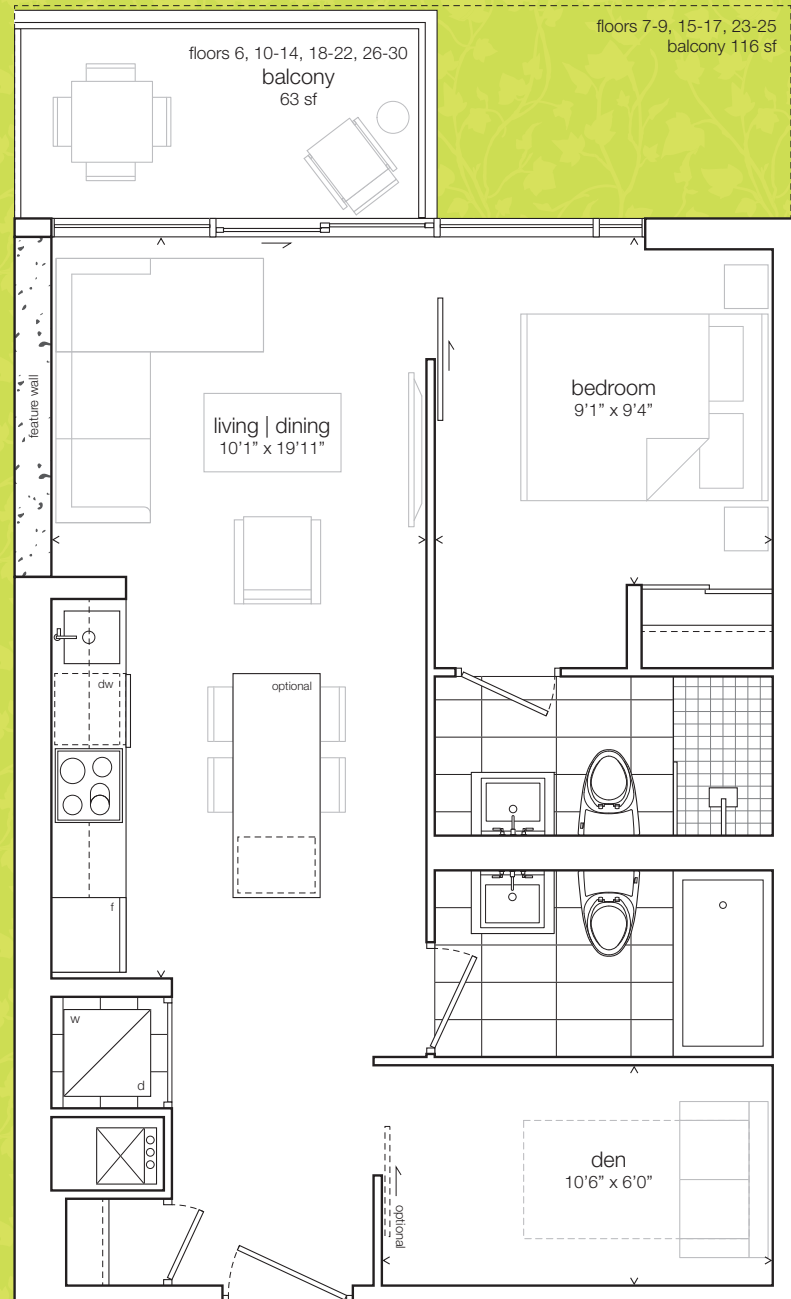
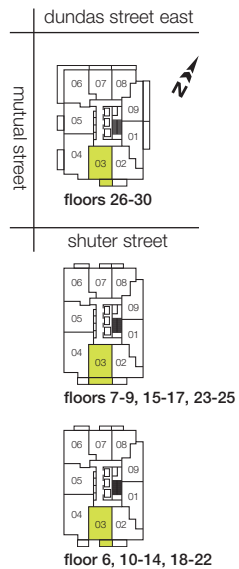
cora ivy is
recognized
for its
irregular,
rolling leaves,
which are
dark green in
colour.



nena

03 / one bedroom + den / 590 sf

WY



603, 1003, 1103, 1203, 1303,
1403, 1803, 1903, 2003,
2103, 2203, 2603, 2703,
2803, 2903, 3003 shown

suite	balcony
2603 2703 2803 2903 3003	63 sf
2303 2403 2503	116 sf
1803 1903 2003 2103 2203	63 sf
1503 1603 1703	116 sf
1003 1103 1203 1303 1403	63 sf
703 803 903	116 sf
603	63 sf

all sizes, dimensions and specifications are subject to change without notice. this plan is not to scale and is subject to architectural review and revision. in order to comply with building site conditions and municipal, structural, vendor and/or architectural requirements, actual living areas may vary from floor area stated. floor area has been measured and may vary in accordance with bulletin #22 published by the tarion warranty corporation. window location, size and type may vary without notice. all furniture shown on marketing plans are not included. purchasers acknowledge that the dwelling units with terraces or balconies may contain an interior step up for access to such terraces or balconies. the balcony area finishing material and any dividers, where applicable, may vary from suite to suite based on design and material specifications. balcony dimensions, configuration and location are estimates only and may not be exactly as shown. location of columns, size and type may vary without notice. e.&o.e.

notes

nena
the white
edged leaves
of nena ivy
are broad
and medium
green in
colour.



mutual street



floors 26-29

shuter street

floors 23-25



floors 20-22, 30



floor 19



floor 18



floors 15-17



floor 14



floors 11-13



floor 10



southwest



floors 20-22, 30
 balcony 268 sf

floors 14-19
 balcony 56 sf

floors 11-13, 23-25
balcony
74 sf

juilet balcony on floor 10

floors 26-29
 balcony 97 sf

living | dining
15'4" x 14'3"

bedroom 3
8'0" x 9'2"

bedroom 2
8'5" x 10'6"

floors 10, 15-17, 23-25
balcony 54 sf

master bedroom
12'1" x 9'2"

feature wall

suite				balcony
3004				268 sf
2604	2704	2804	2904	97 sf
2304 2404 2504				128 sf
2004 2104 2204				268 sf

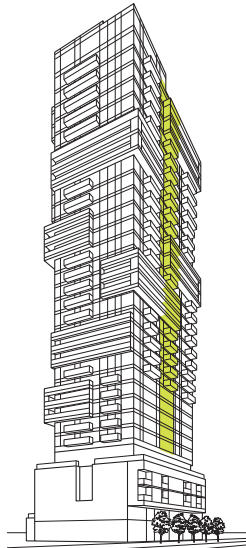
suite	balcony
1804 1904	56 sf
1507 1607 1707	110 sf
1404	56 sf
1104 1204 1304	74 sf
1004	54 sf + juliet

all sizes, dimensions and specifications are subject to change without notice, this plan is not to scale and is subject to architectural review and revision. in order to comply with building site conditions and municipal, structural, vendor and/or architectural requirements, actual living areas may vary from floor area stated. floor area has been measured and may vary in accordance with bulletin #22 published by the warranty corporation. window location, size and type may vary without notice. all furniture shown on marketing plans are not included. purchasers acknowledge that the dwelling units with terraces or balconies may contain an interior step up for access to such terraces or balconies. the balcony area finishing material and any dividers, where applicable, may vary from suite to suite based on design and material specifications. balcony dimensions, configuration and location are estimates only and may not be exactly as shown. location of columns, size and type may vary without notice. e.&o.e.

notes

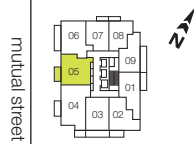
fantasia
the five-lobed
leaves of
fantasia ivy
are rich green
and speckled
with many
tiny white
and yellow
dots.





northwest

dundas street east



floors 23-29

shuter street



floors 20-22, 30



floors 16-18



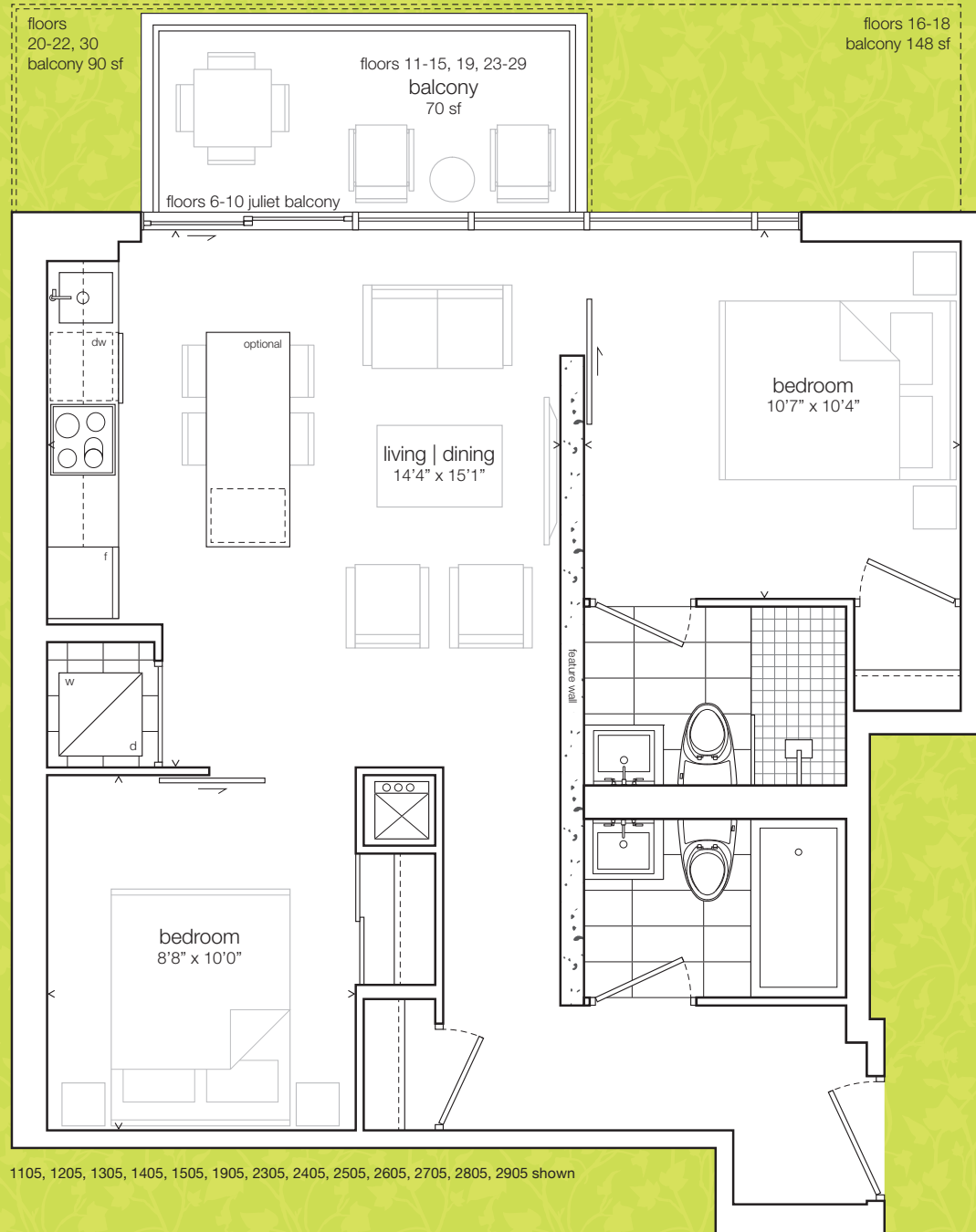
floors 11-15, 19



floors 6-10

kobold

05 / two bedroom / 669 sf



1105, 1205, 1305, 1405, 1505, 1905, 2305, 2405, 2505, 2605, 2705, 2805, 2905 shown

suite	balcony
3005	90 sf
2305 2405 2505 2605 2705 2805 2905	70 sf
2005 2105 2205	90 sf
1905	70 sf
1605 1705 1805	148 sf
1105 1205 1305 1405 1505	70 sf
605 705 805 905 1005	juliet

all sizes, dimensions and specifications are subject to change without notice. this plan is not to scale and is subject to architectural review and revision. in order to comply with building site conditions and municipal, structural, vendor and/or architectural requirements, actual living areas may vary from floor area stated. floor area has been measured and may vary in accordance with bulletin #22 published by the tarion warranty corporation. window location, size and type may vary without notice. all furniture shown on marketing plans are not included. purchasers acknowledge that the dwelling units with terraces or balconies may contain an interior step up for access to such terraces or balconies. the balcony area finishing material and any dividers, where applicable, may vary from suite to suite based on design and material specifications. balcony dimensions, configuration and location are estimates only and may not be exactly as shown. location of columns, size and type may vary without notice. e.&o.e.

notes

kobold

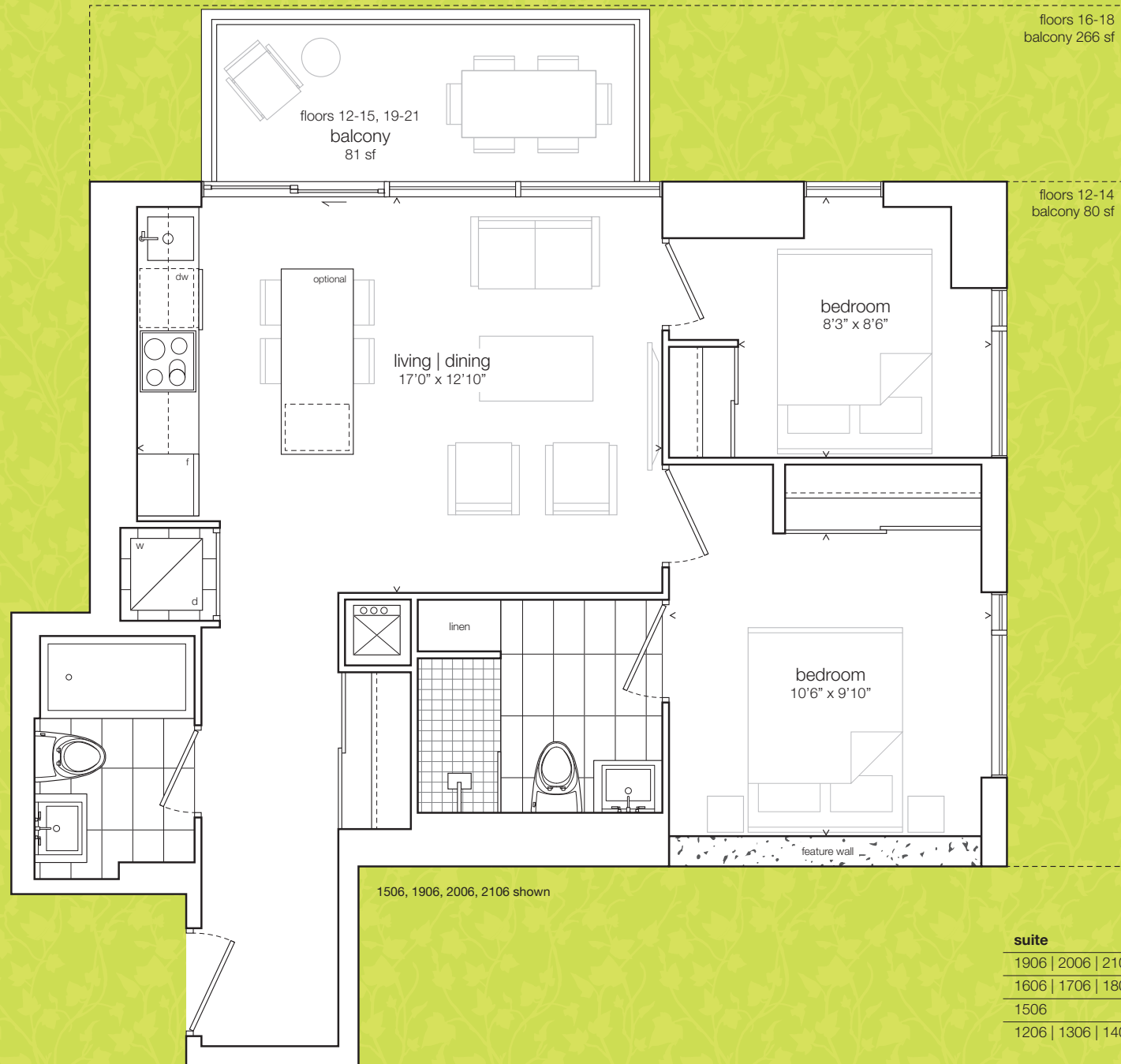
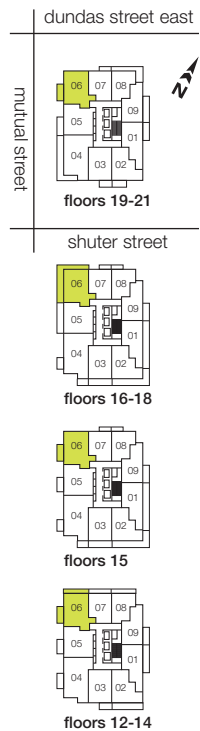
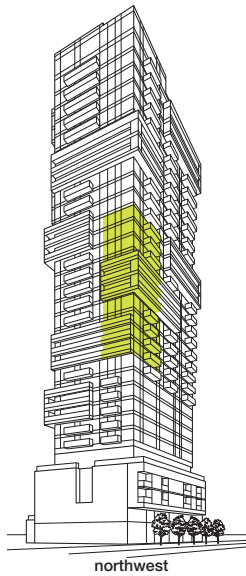
kobold is a small and compact ivy, bearing small medium green leaves that are three-lobed and slightly heart shaped at the base.



starling 2

06 / two bedroom / 701 sf

WY



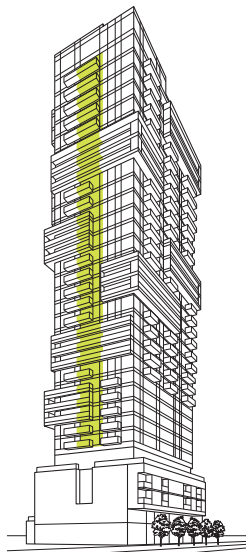
suite	balcony
1906 2006 2106	81 sf
1606 1706 1806	266 sf
1506	81 sf
1206 1306 1406	161 sf

all sizes, dimensions and specifications are subject to change without notice. this plan is not to scale and is subject to architectural review and revision. in order to comply with building site conditions and municipal, structural, vendor and/or architectural requirements, actual living areas may vary from floor area stated. floor area has been measured and may vary in accordance with bulletin #22 published by the tarion warranty corporation. window location, size and type may vary without notice. all furniture shown on marketing plans are not included. purchasers acknowledge that the dwelling units with terraces or balconies may contain an interior step up for access to such terraces or balconies. the balcony area finishing material and any dividers, where applicable, may vary from suite to suite based on design and material specifications. balcony dimensions, configuration and location are estimates only and may not be exactly as shown. location of columns, size and type may vary without notice. e.&o.e.

starling
this ivy
features
leaves that
resemble a
bird's
footprint,
most likely
borrowing its
namesake
from the bird.



notes

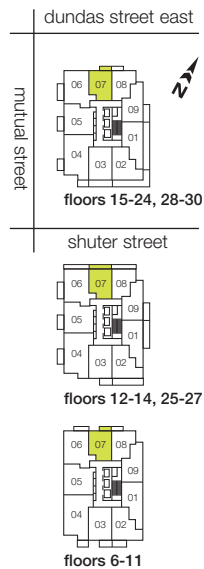
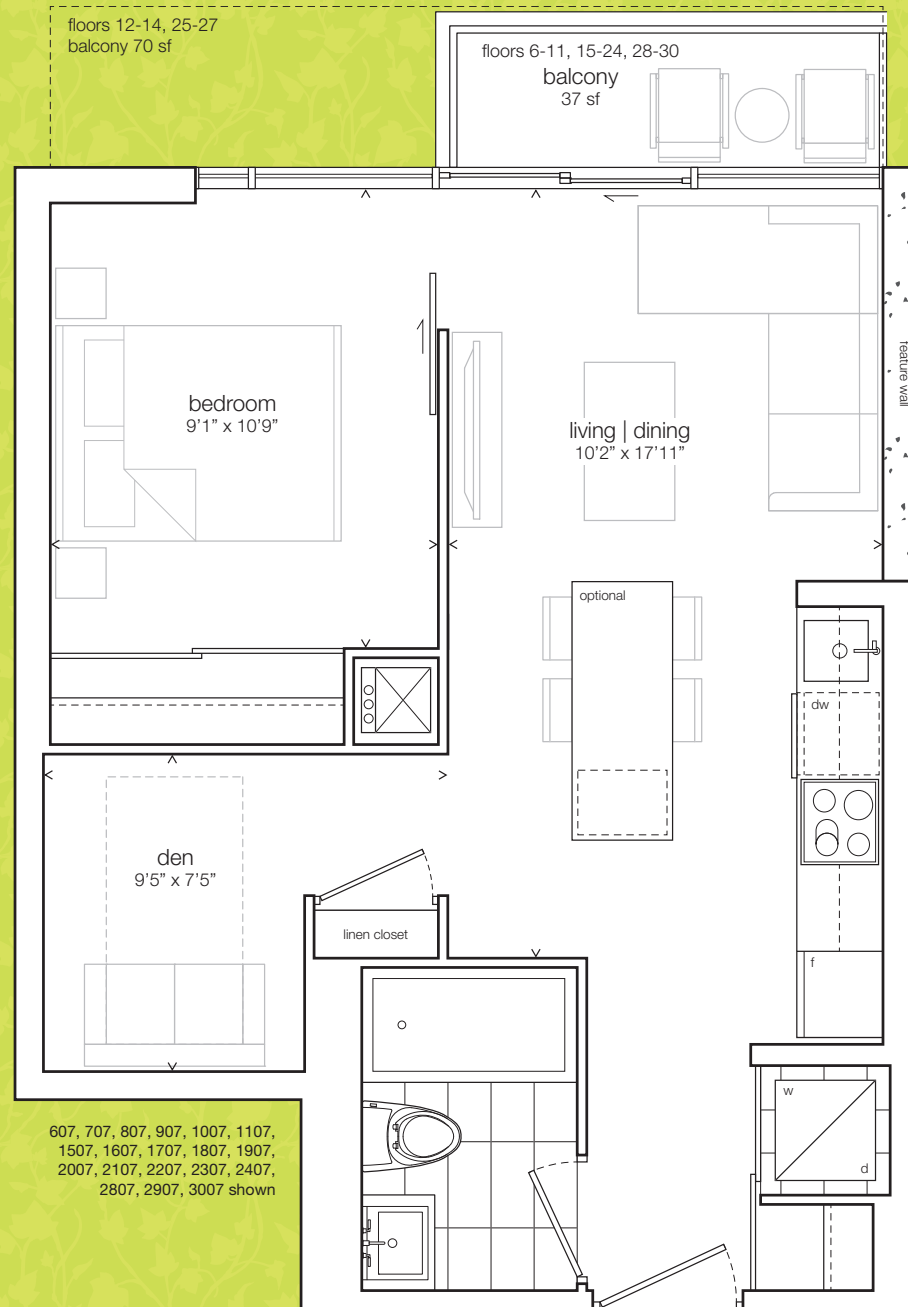


northwest

ballet

07 / one bedroom + den / 505 sf

VV



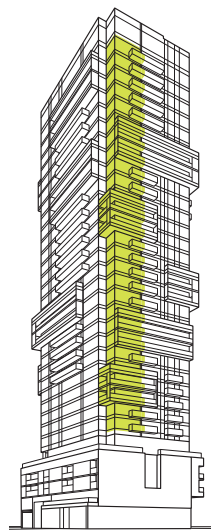
suite	balcony
2807 2907 3007	37 sf
2507 2607 2707	70 sf
2007 2107 2207 2307 2407	37 sf
1507 1607 1707 1807 1907	37 sf
1207 1307 1407	70 sf
607 707 807 907 1007 1107	37 sf

all sizes, dimensions and specifications are subject to change without notice, this plan is not to scale and is subject to architectural review and revision. in order to comply with building site conditions and municipal, structural, vendor and/or architectural requirements, actual living areas may vary from floor area stated. floor area has been measured and may vary in accordance with bulletin #22 published by the tarion warranty corporation. window location, size and type may vary without notice. all furniture shown on marketing plans are not included. purchasers acknowledge that the dwelling units with terraces or balconies may contain an interior step up for access to such terraces or balconies. the balcony area finishing material and any dividers, where applicable, may vary from suite to suite based on design and material specifications. balcony dimensions, configuration and location are estimates only and may not be exactly as shown. location of columns, size and type may vary without notice. e.&o.e.

ballet

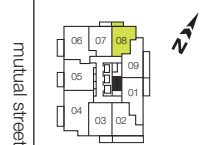
ballet ivy
grows 5-10
centimetres
in height with
small-mid
green leaves
with cream
markings that
are longer
and narrower
than other
ivies.





northeast

dundas street east



floors 23, 24, 28-30

shuter street



floors 12-14, 25-27



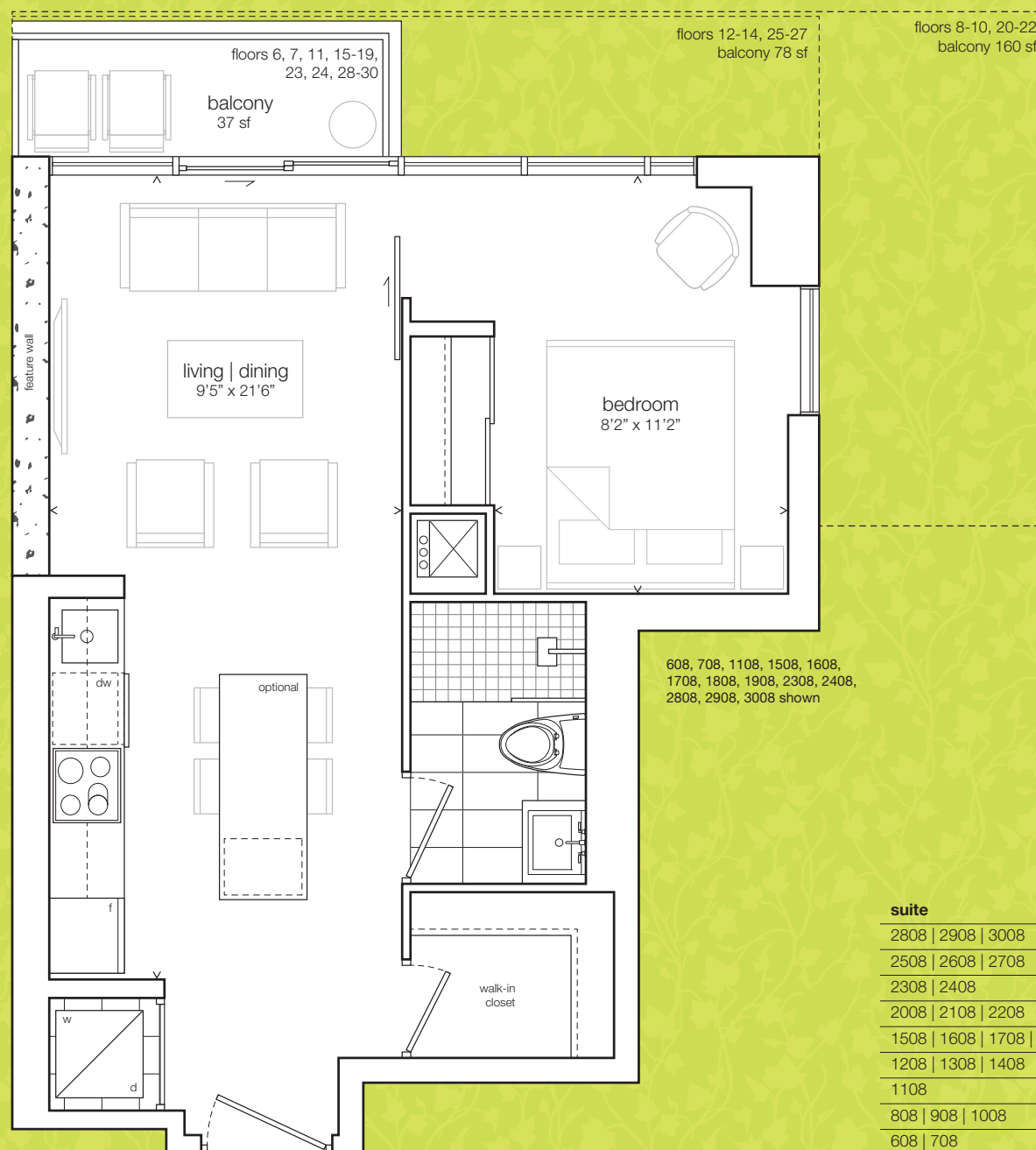
floors 8-10, 20-22



floors 6, 7, 11, 15-19

bettina

08 / one bedroom / 465 sf



suite	balcony
2808 2908 3008	37 sf
2508 2608 2708	78 sf
2308 2408	37 sf
2008 2108 2208	160 sf
1508 1608 1708 1808 1908	37 sf
1208 1308 1408	78 sf
1108	37 sf
808 908 1008	160 sf
608 708	37 sf

all sizes, dimensions and specifications are subject to change without notice. this plan is not to scale and is subject to architectural review and revision. in order to comply with building site conditions and municipal, structural, vendor and/or architectural requirements, actual living areas may vary from floor area stated. floor area has been measured and may vary in accordance with bulletin #22 published by the tarion warranty corporation. window location, size and type may vary without notice. all furniture shown on marketing plans are not included. purchasers acknowledge that the dwelling units with terraces or balconies may contain an interior step up for access to such terraces or balconies. the balcony area finishing material and any dividers, where applicable, may vary from suite to suite based on design and material specifications. balcony dimensions, configuration and location are estimates only and may not be exactly as shown. location of columns, size and type may vary without notice. e.&o.e.

notes

bettina

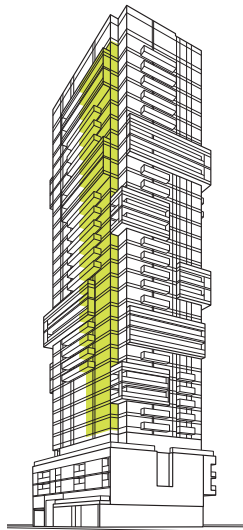
bettina ivy is characterized by fluted, triangular green leaves spotted with soft greens, taupe, and bright whites.



brimstone

09 / one bedroom + media / 536 sf

VVY



northeast

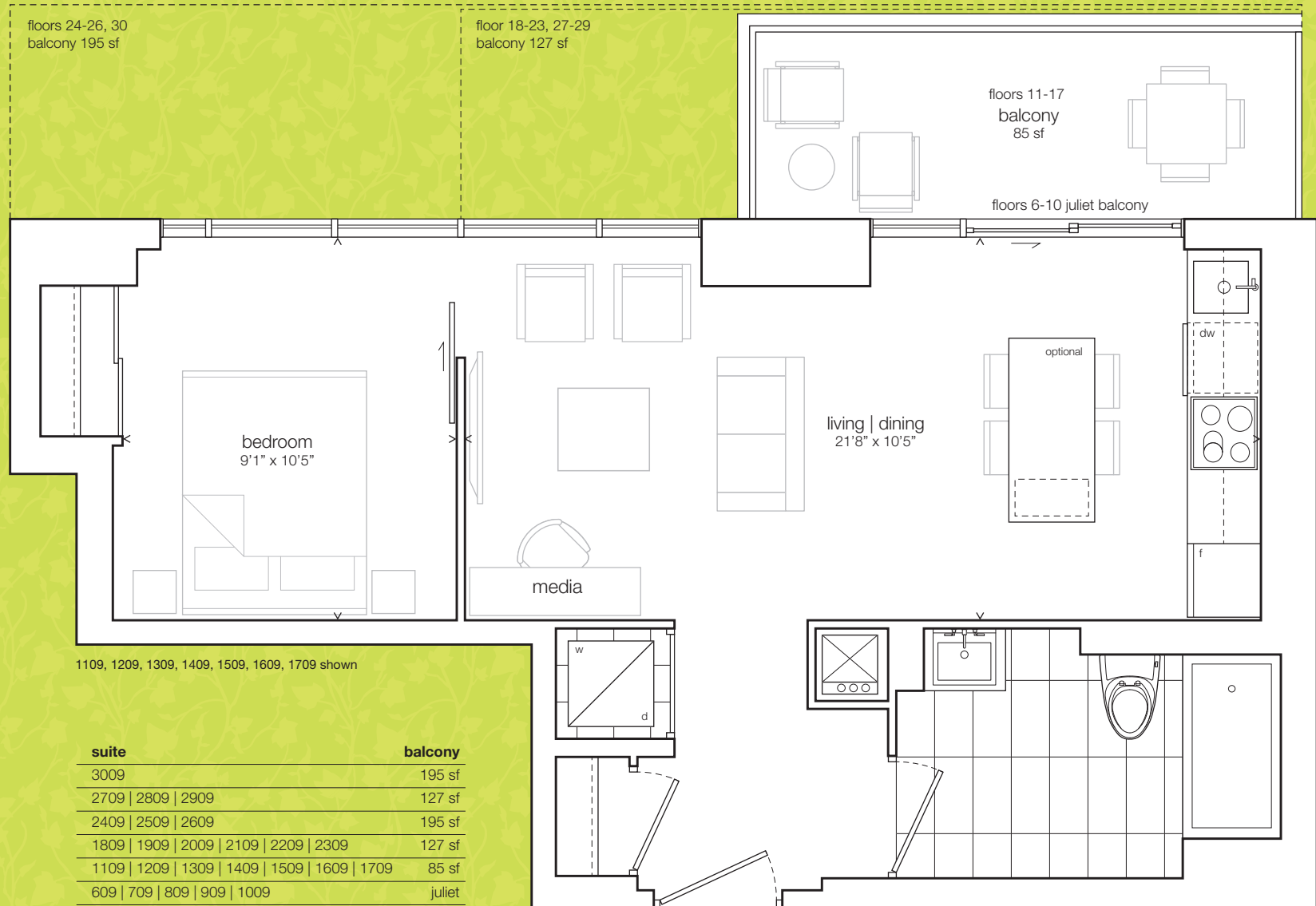


floors 24-26, 30
balcony 195 sf

floor 18-23, 27-29
balcony 127 sf

floors 11-17
balcony
85 sf

floors 6-10 juliet balcony



suite	balcony
3009	195 sf
2709 2809 2909	127 sf
2409 2509 2609	195 sf
1809 1909 2009 2109 2209 2309	127 sf
1109 1209 1309 1409 1509 1609 1709	85 sf
609 709 809 909 1009	juliet

dundas street east

mutual street



floors 24-26, 30

shuter street



floors 18-23, 27-29



floors 11-17



floors 6-10

all sizes, dimensions and specifications are subject to change without notice. this plan is not to scale and is subject to architectural review and revision. in order to comply with building site conditions and municipal, structural, vendor and/or architectural requirements, actual living areas may vary from floor area stated. floor area has been measured and may vary in accordance with bulletin #22 published by the tarion warranty corporation. window location, size and type may vary without notice. all furniture shown on marketing plans are not included. purchasers acknowledge that the dwelling units with terraces or balconies may contain an interior step up for access to such terraces or balconies. the balcony area finishing material and any dividers, where applicable, may vary from suite to suite based on design and material specifications. balcony dimensions, configuration and location are estimates only and may not be exactly as shown. location of columns, size and type may vary without notice. e.&o.e.

notes

brimstone

the three-lobed leaves of brimstone ivy curl and twist, and are speckled with dark and lime green.

