

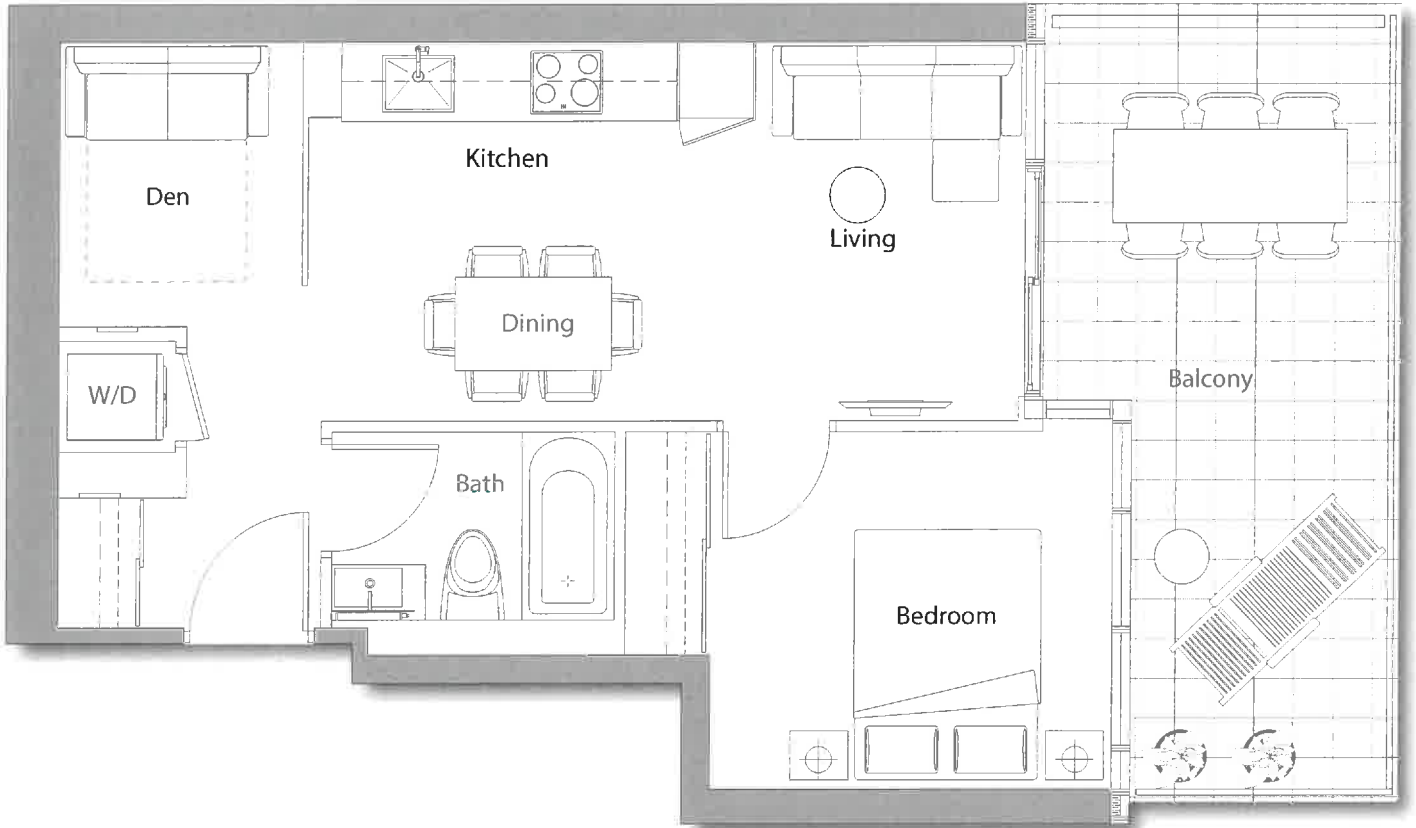


# S A I S O N S

East Tower Floorplans — 6/F - 21/F



# SAISONS



## 01

### 1 BEDROOM + DEN

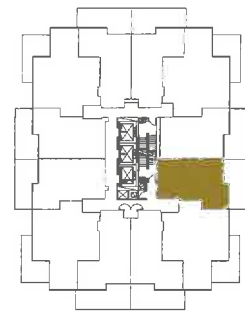
**TOTAL AREA 693 SQFT.**

530 SQFT  
INDOOR AREA

163 SQFT  
OUTDOOR AREA

#### OUTDOOR LIVING ROOM FEATURES

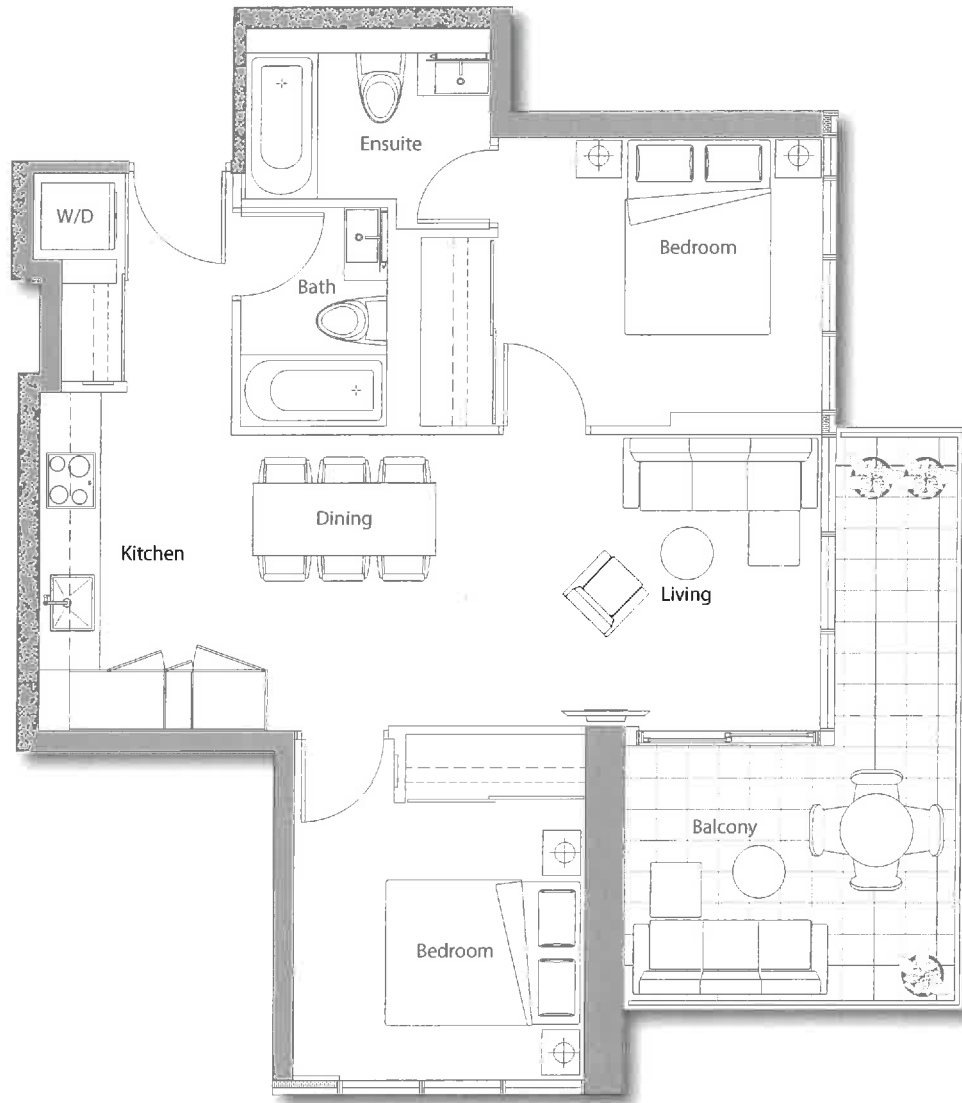
- Radiant ceiling heater
- Balcony lights
- Wood-grain soffit ceiling treatment
- Composite wood decking



The developer reserves the right to make minor revisions to interior wall locations and exterior window system. All materials and drawings are approximate. Information is subject to change without notice. Actual square footage may vary from the stated floorplan. Furniture and upgrades shown on plans are for illustration purposes only and are not included. E.&O.E.



# SAISONS



## 02

### 2 BEDROOM

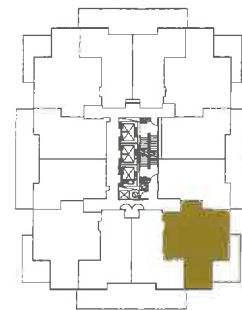
**TOTAL AREA 893 SQ.FT.**

755 SQ.FT.  
INDOOR AREA

138 SQ.FT.  
OUTDOOR AREA

#### OUTDOOR LIVING ROOM FEATURES

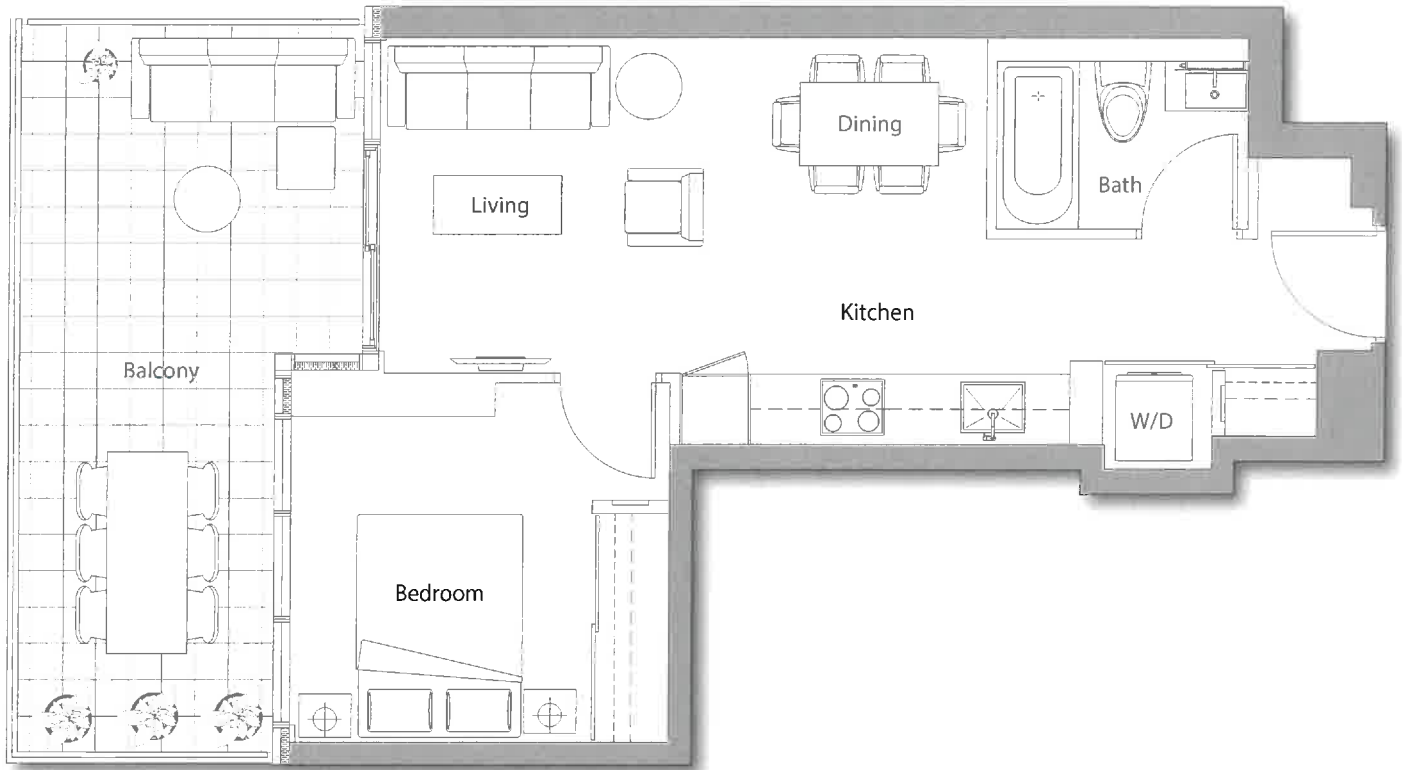
- Radiant ceiling heater
- Balcony lights
- Wood-grain soffit ceiling treatment
- Composite wood decking



The developer reserves the right to make minor revisions to interior wall locations and exterior window system. All materials and drawings are approximate. Information is subject to change without notice. Actual square footage may vary from the stated floorplan. Furniture and upgrades shown on plans are for illustration purposes only and are not included. E.&O.E.



# SAISONS

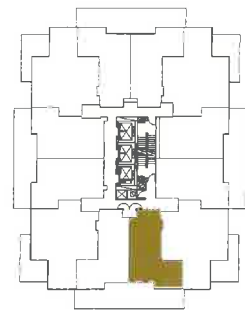


## 03 1 BEDROOM

<b>TOTAL AREA</b>	<b>703 SQFT.</b>
505 SQFT. INDOOR AREA	198 SQFT. OUTDOOR AREA

### OUTDOOR LIVING ROOM FEATURES

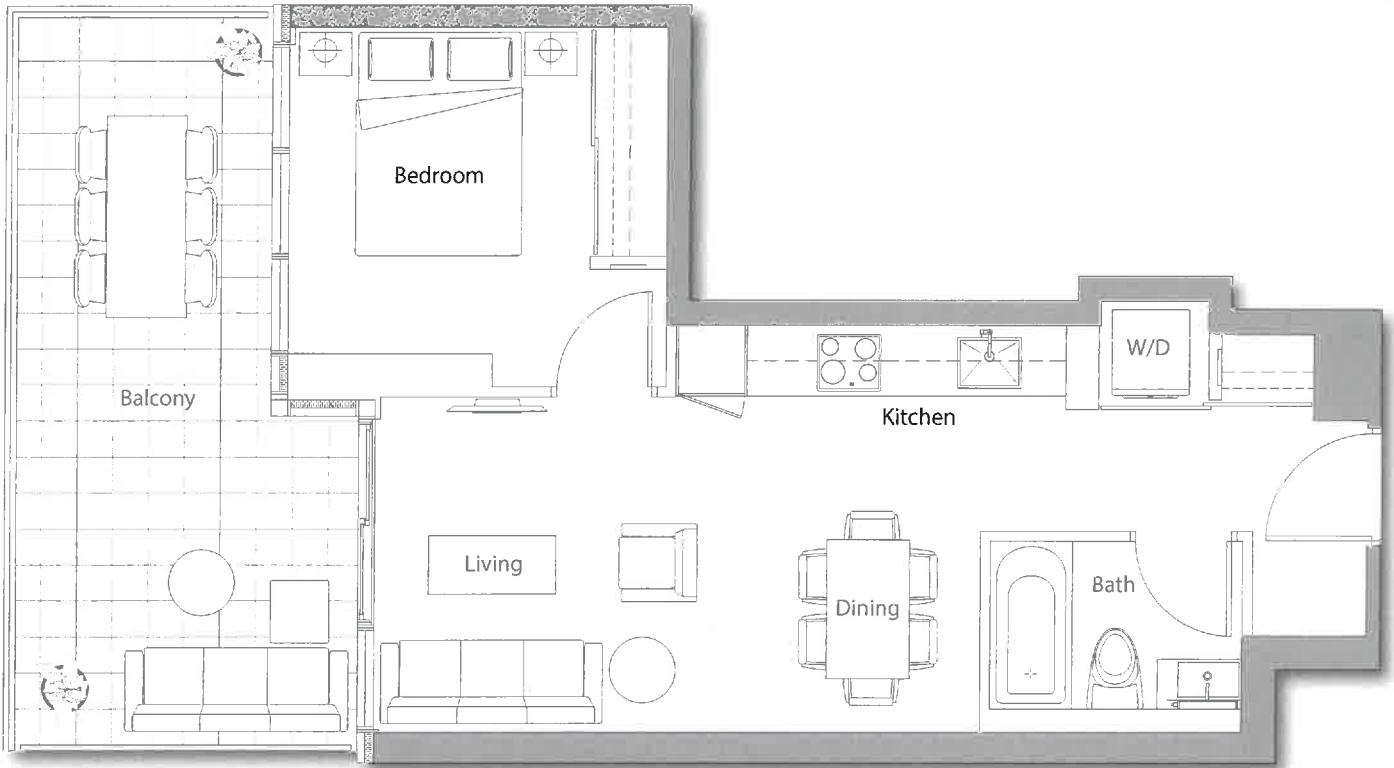
- Radiant ceiling heater
- Balcony lights
- Wood-grain soffit ceiling treatment
- Composite wood decking



The developer reserves the right to make minor revisions to interior wall locations and exterior window system. All materials and drawings are approximate. Information is subject to change without notice. Actual square footage may vary from the stated floorplan. Furniture and upgrades shown on plans are for illustration purposes only and are not included. E.&O.E.



# SAISONS



## 05

### 1 BEDROOM

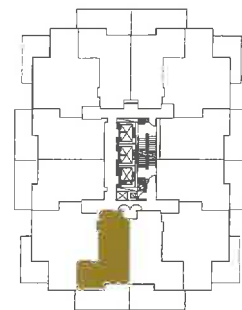
**TOTAL AREA 703 SQFT.**

505 SQFT  
INDOOR AREA

198 SQFT.  
OUTDOOR AREA

#### OUTDOOR LIVING ROOM FEATURES

- Radiant ceiling heater
- Balcony lights
- Wood-grain soffit ceiling treatment
- Composite wood decking



The developer reserves the right to make minor revisions to interior wall locations and exterior window system. All materials and drawings are approximate. Information is subject to change without notice. Actual square footage may vary from the stated floorplan. Furniture and upgrades shown on plans are for illustration purposes only and are not included. E.&O.E.



# SAISONS



## 06

### 2 BEDROOM

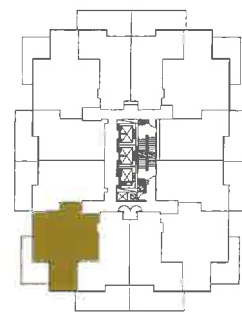
**TOTAL AREA 893 SQFT**

755 SQFT  
INDOOR AREA

138 SQFT  
OUTDOOR AREA

#### OUTDOOR LIVING ROOM FEATURES

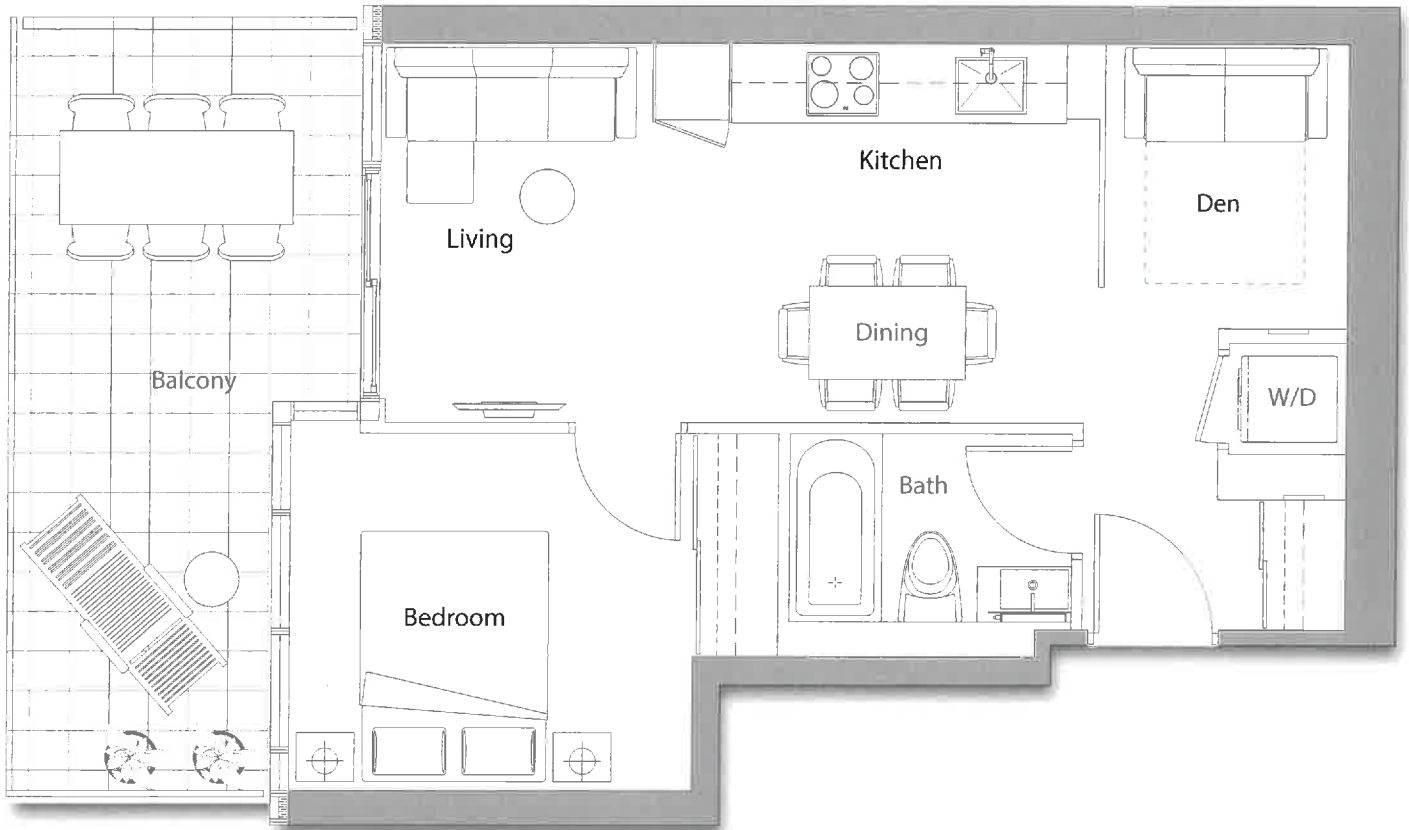
- Radiant ceiling heater
- Balcony lights
- Wood-grain soffit ceiling treatment
- Composite wood decking



The developer reserves the right to make minor revisions to interior wall locations and exterior window system. All materials and drawings are approximate. Information is subject to change without notice. Actual square footage may vary from the stated floorplan. Furniture and upgrades shown on plans are for illustration purposes only and are not included. E.&O.E.



# SAISONS



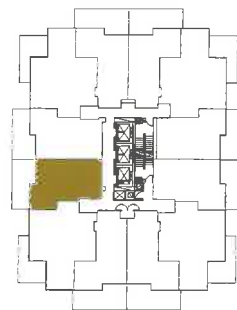
## 07

### 1 BEDROOM + DEN

<b>TOTAL AREA 693 SQ.FT.</b>	
530 SQ.FT INDOOR AREA	163 SQ.FT OUTDOOR AREA

#### OUTDOOR LIVING ROOM FEATURES

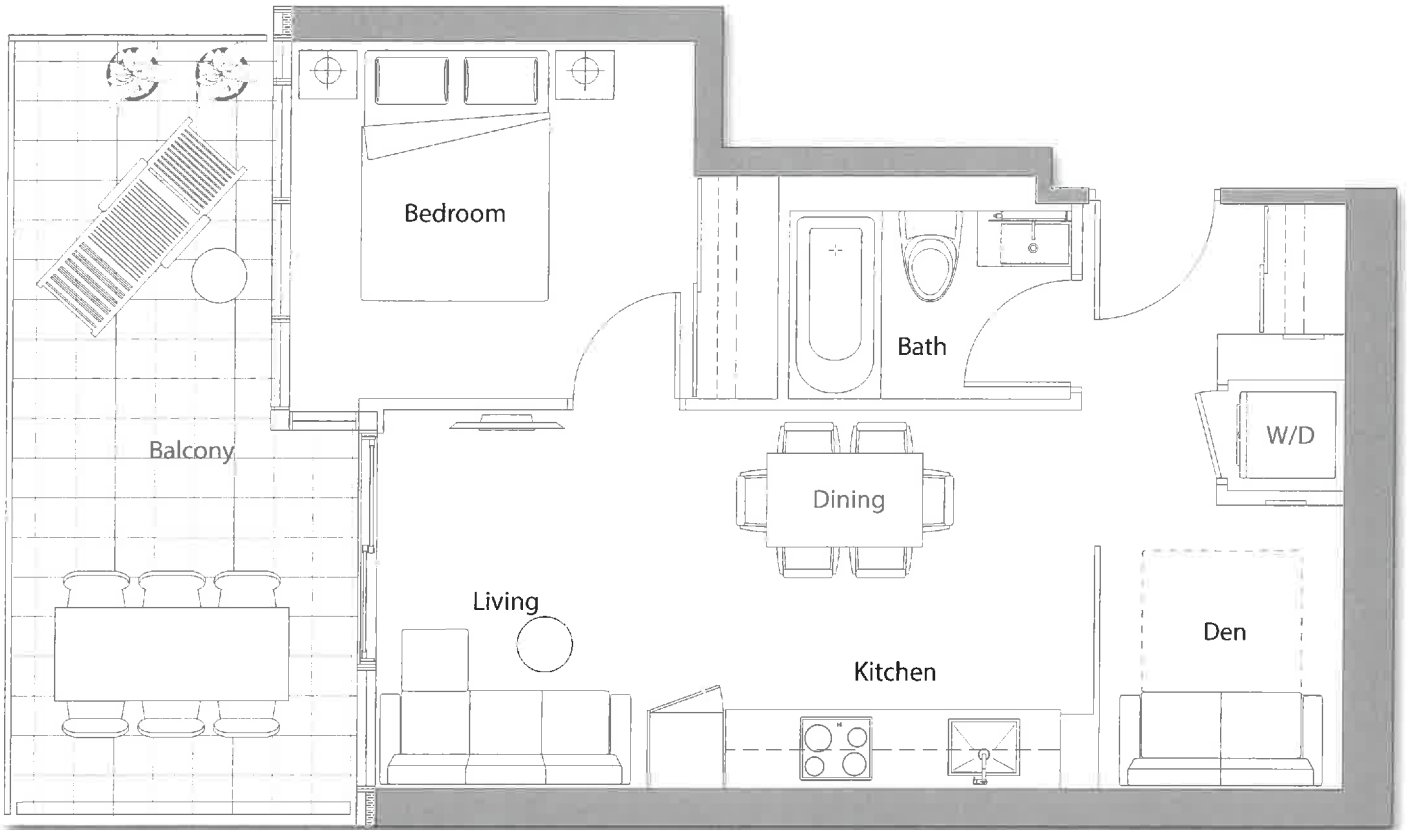
- Radiant ceiling heater
- Balcony lights
- Wood-grain soffit ceiling treatment
- Composite wood decking



The developer reserves the right to make minor revisions to interior wall locations and exterior window system. All materials and drawings are approximate. Information is subject to change without notice. Actual square footage may vary from the stated floorplan. Furniture and upgrades shown on plans are for illustration purposes only and are not included. E.&O.E.



# SAISONS



## 08

1 BEDROOM + DEN

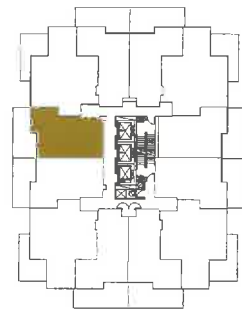
**TOTAL AREA 693 SQFT**

530 SQFT  
INDOOR AREA

163 SQFT  
OUTDOOR AREA

### OUTDOOR LIVING ROOM FEATURES

- Radiant ceiling heater
- Balcony lights
- Wood-grain soffit ceiling treatment
- Composite wood decking



The developer reserves the right to make minor revisions to interior wall locations and exterior window system. All materials and drawings are approximate. Information is subject to change without notice. Actual square footage may vary from the stated floorplan. Furniture and upgrades shown on plans are for illustration purposes only and are not included. E.&O.E.





# SAISONS



## 09

### 2 BEDROOM

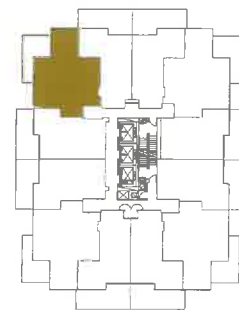
**TOTAL AREA 893 SQFT**

755 SQFT  
INDOOR AREA

138 SQFT  
OUTDOOR AREA

#### OUTDOOR LIVING ROOM FEATURES

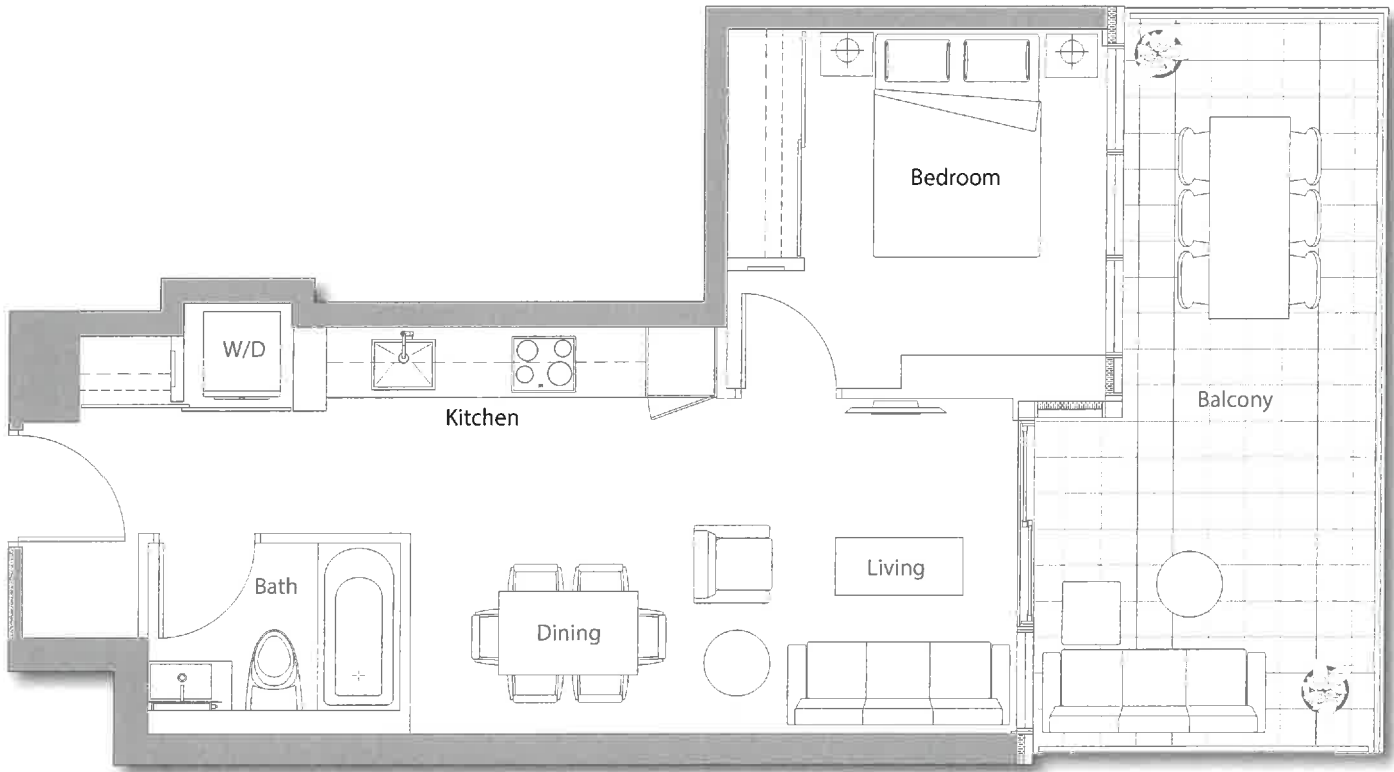
- Radiant ceiling heaters
- Balcony lights
- Wood-grain soffit ceiling treatment
- Composite wood decking



The developer reserves the right to make minor revisions to interior wall locations and exterior window system. All materials and drawings are approximate. Information is subject to change without notice. Actual square footage may vary from the stated floorplan. Furniture and upgrades shown on plans are for illustration purposes only and are not included. E.&O.E.



# SAISONS



## 10 1 BEDROOM

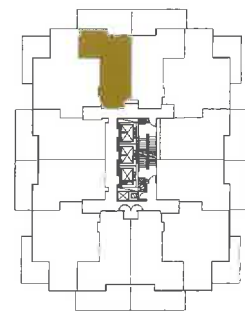
**TOTAL AREA 703 SQFT.**

505 SQFT  
INDOOR AREA

198 SQFT  
OUTDOOR AREA

### OUTDOOR LIVING ROOM FEATURES

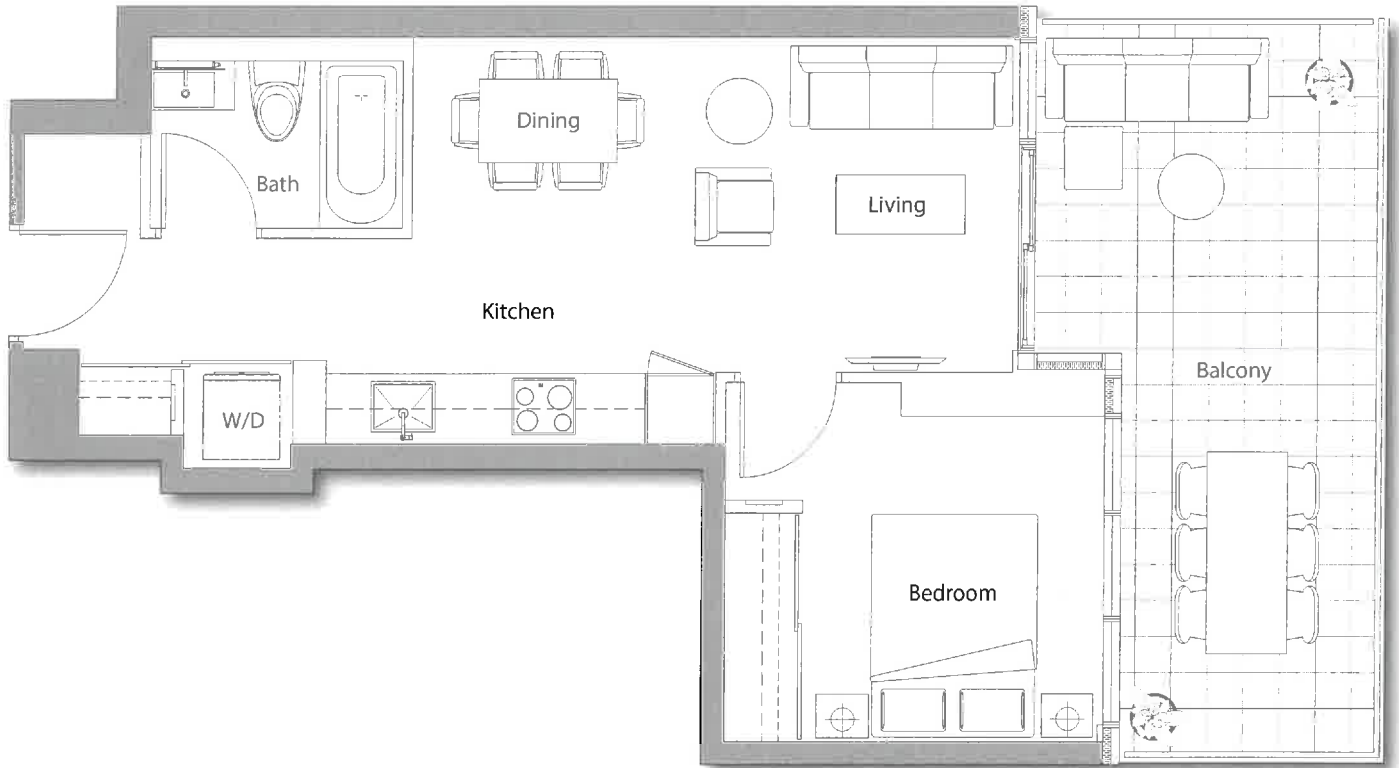
- Radiant ceiling heater
- Balcony lights
- Wood-grain soft ceiling treatment
- Composite wood decking



The developer reserves the right to make minor revisions to interior wall locations and exterior window system. All materials and drawings are approximate. Information is subject to change without notice. Actual square footage may vary from the stated floorplan. Furniture and upgrades shown on plans are for illustration purposes only and are not included. E.&O.E.



# SAISONS

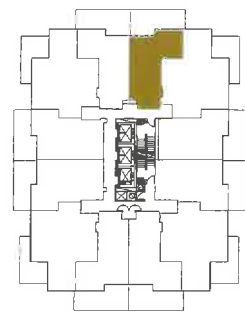


## 11 1 BEDROOM

<b>TOTAL AREA 703 SQFT</b>	
505 SQFT INDOOR AREA	198 SQFT OUTDOOR AREA

### OUTDOOR LIVING ROOM FEATURES

- Radiant ceiling heater
- Balcony lights
- Wood-grain soffit ceiling treatment
- Composite wood decking



The developer reserves the right to make minor revisions to interior wall locations and exterior window system. All materials and drawings are approximate. Information is subject to change without notice. Actual square footage may vary from the stated floorplan. Furniture and upgrades shown on plans are for illustration purposes only and are not included. E.&O.E.



# SAISONS



## 12 2 BEDROOM

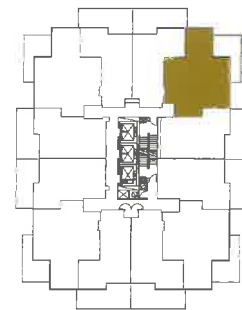
**TOTAL AREA 898 SQFT.**

760 SQFT  
INDOOR AREA

138 SQFT  
OUTDOOR AREA

### OUTDOOR LIVING ROOM FEATURES

- Radiant ceiling heater
- Balcony lights
- Wood-grain soffit ceiling treatment\*
- Composite wood decking



The developer reserves the right to make minor revisions to interior wall locations and exterior window system. All materials and drawings are approximate. Information is subject to change without notice. Actual square footage may vary from the stated floorplan. Furniture and upgrades shown on plans are for illustration purposes only and are not included. E.&O.E.



# SAISONS



# 15

## 1 BEDROOM

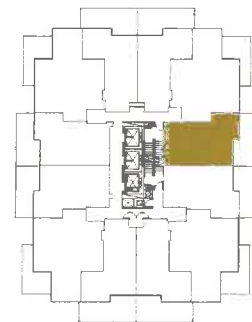
**TOTAL AREA 693 SQ.FT.**

530 SQ.FT.  
INDOOR AREA

163 SQ.FT.  
OUTDOOR AREA

### OUTDOOR LIVING ROOM FEATURES

- Radiant ceiling heater
- Balcony lights
- Wood-grain soffit ceiling treatment
- Composite wood decking



The developer reserves the right to make minor revisions to interior wall locations and exterior window system. All materials and drawings are approximate. Information is subject to change without notice. Actual square footage may vary from the stated floorplan. Furniture and upgrades shown on plans are for illustration purposes only and are not included. E.&O.E.



## SAISONS

### Features & Finishes

#### Interior And Exterior Features:

- 9' ceilings \*
- Choice of three interior colour schemes
- Open balconies or terraces for all suites
- Interior suite and closet doors are trimmed with wood-grain laminate finish
- Roller-shade window coverings
- Television and telephone jacks in every principal room
- Central heating and cooling in every principal room
- Smart thermostat
- Wide-plank laminate flooring throughout the main living area, bedrooms, den, and closets
- Porcelain tile flooring in the laundry closet

#### Balcony (Outdoor Living Room) Features:

- Radiant ceiling heaters
- Balcony lights
- Wood-grain soffit ceiling treatment
- Composite wood decking

#### Bathroom:

- Custom medicine cabinet with mirror, shelves and built-in lighting
- Wood-grain laminate vanity cabinet with soft-close hardware featuring Blum® hinges and tracks for superb quality and durability
- Engineered quartz stone countertop
- Kohler under-mount sink with polished chrome Grohe faucet
- Dual-flush toilet with soft-close seat
- Recessed pot lighting
- Large-format porcelain Calacatta wall tile and tub/shower surround
- Polished chrome Grohe faucet, tub spout and showerhead
- Walk-in full-length shower stall (where applicable) partially enclosed with frameless glass with door

#### Kitchen:

- Custom wood-grain laminate cabinetry with open under-cabinet lighting
- Cabinets feature soft-close hardware by Blum® hinges and tracks for superb quality and durability, a magic corner (where applicable) and a sliding basket under the kitchen sink
- Drawer organizers for cutlery
- Engineered quartz stone countertop
- Large-format porcelain Calacatta tile backsplash
- Track or pot lighting (depending on kitchen configuration)
- Large single-bowl stainless steel under-mount sink
- Polished chrome Grohe faucet with lever handle and pull-down sprayer

#### Appliance Package:

- Miele refrigerator with integrated panel \*\*
- Miele hood fan \*\*
- Miele dishwasher with integrated panel
- Miele electric cook-top \*\*
- Miele convection oven \*\*
- Miele stackable front load washer and dryer
- Panasonic microwave oven with stainless steel trim kit

\* 9' ceilings in principal living areas. Drop ceilings where required.

\*\* 1 BR / 1 BR + D suites will receive 24" refrigerator, hood fan, cook-top, and oven

2 BR / 2 BR + D suites will receive 30" refrigerator, 24" hood fan, cook-top, and oven

3 BR / 3 BR + D suites will receive 30" refrigerator, hood fan, cook-top, and oven