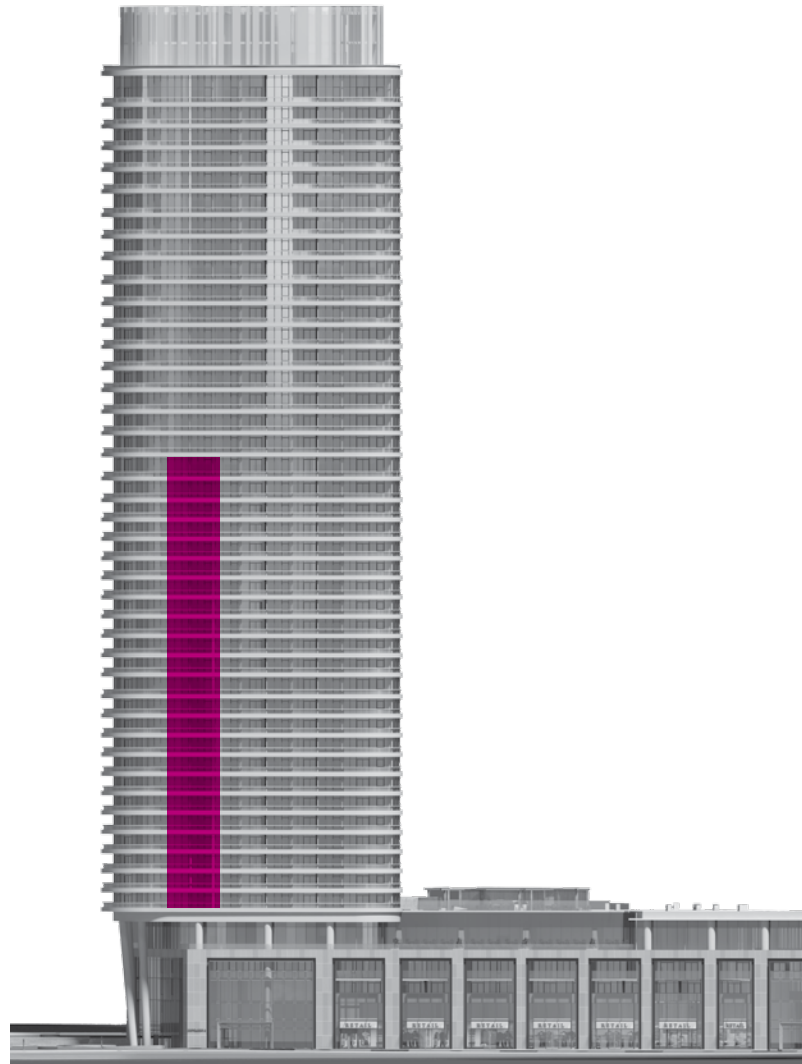


The *Via* Collection

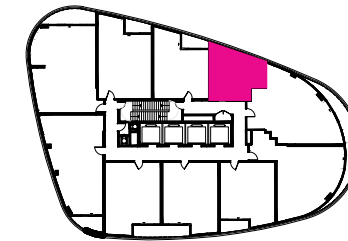


Suite S1-2 Studio •

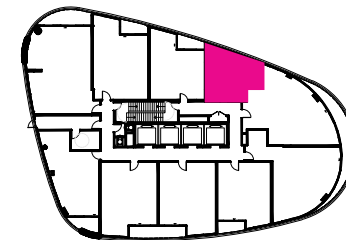


North Face

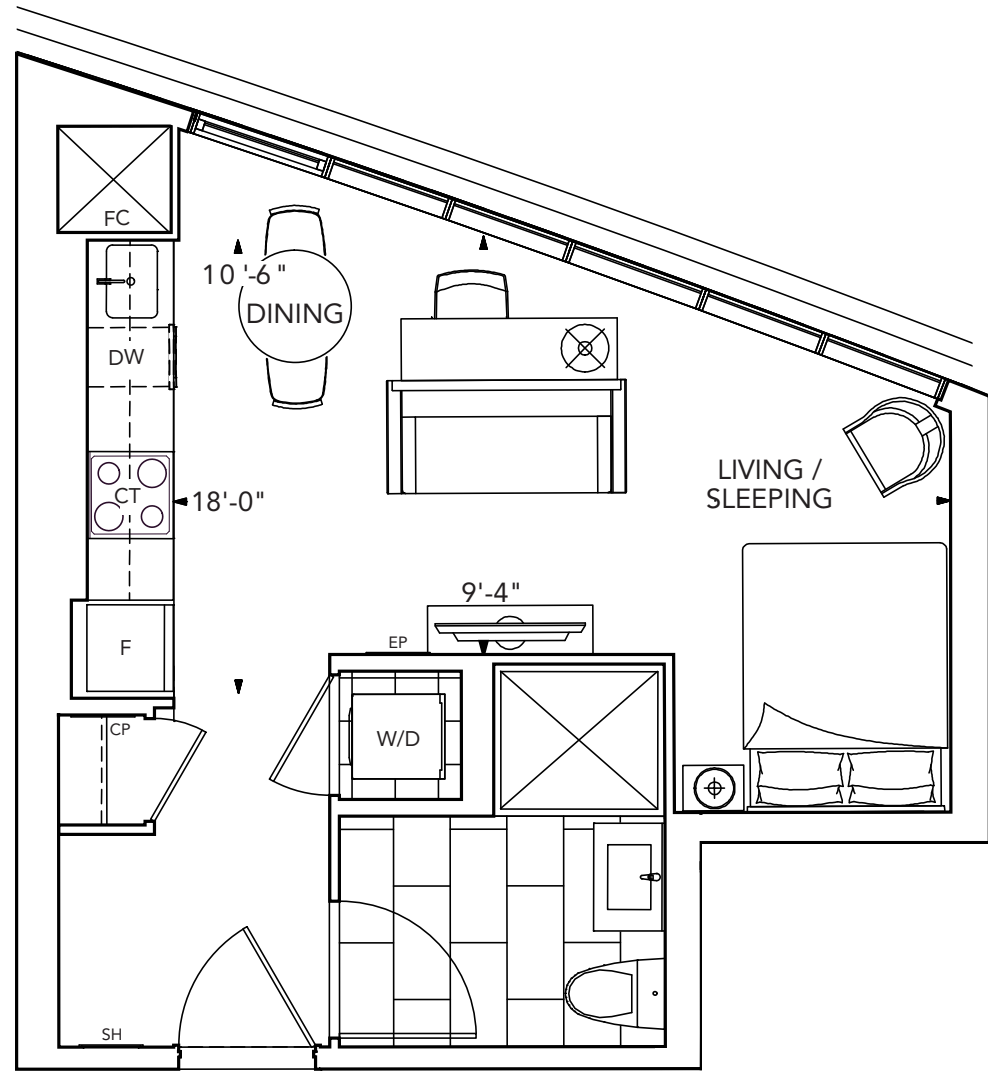
585 Bloor Street East



FLOOR 6-27

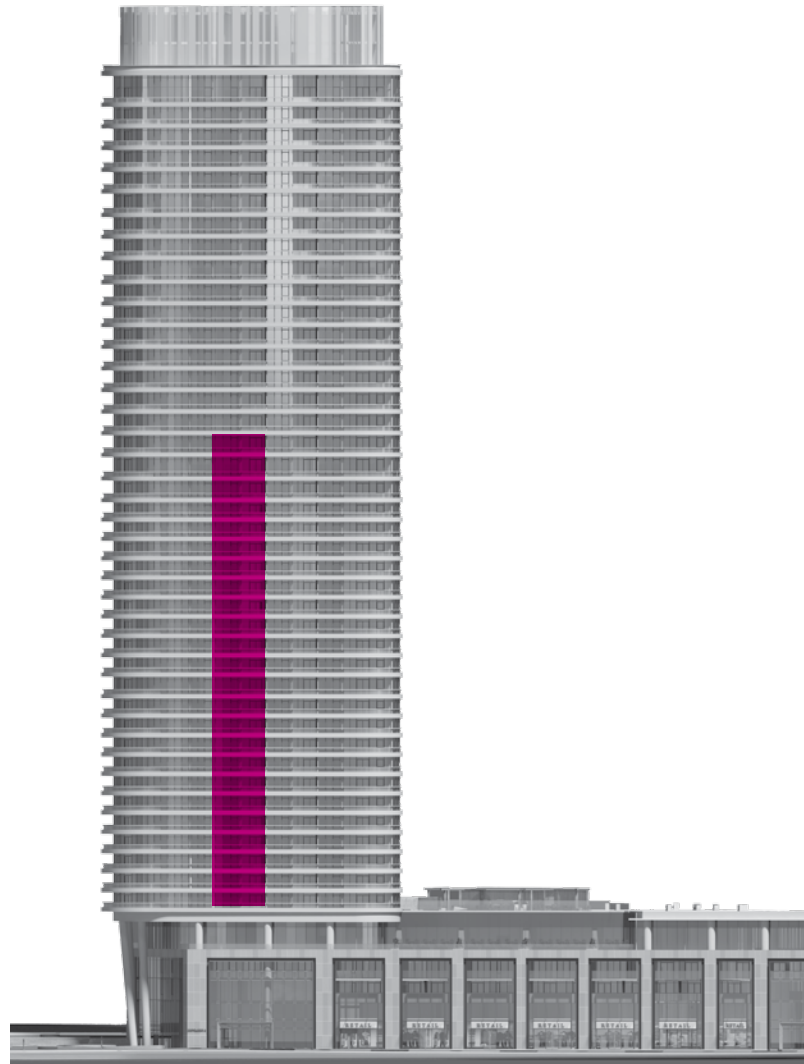


FLOOR 5



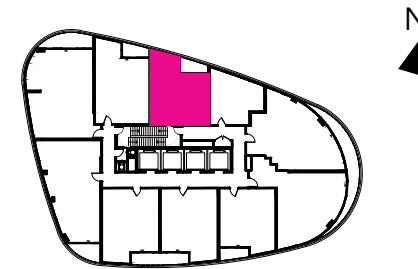
Suite 1A-2

1 Bedroom •

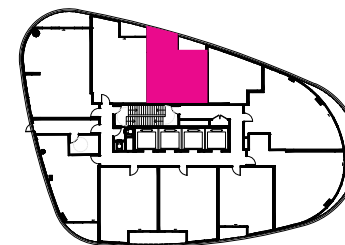


North Face

585 Bloor Street East

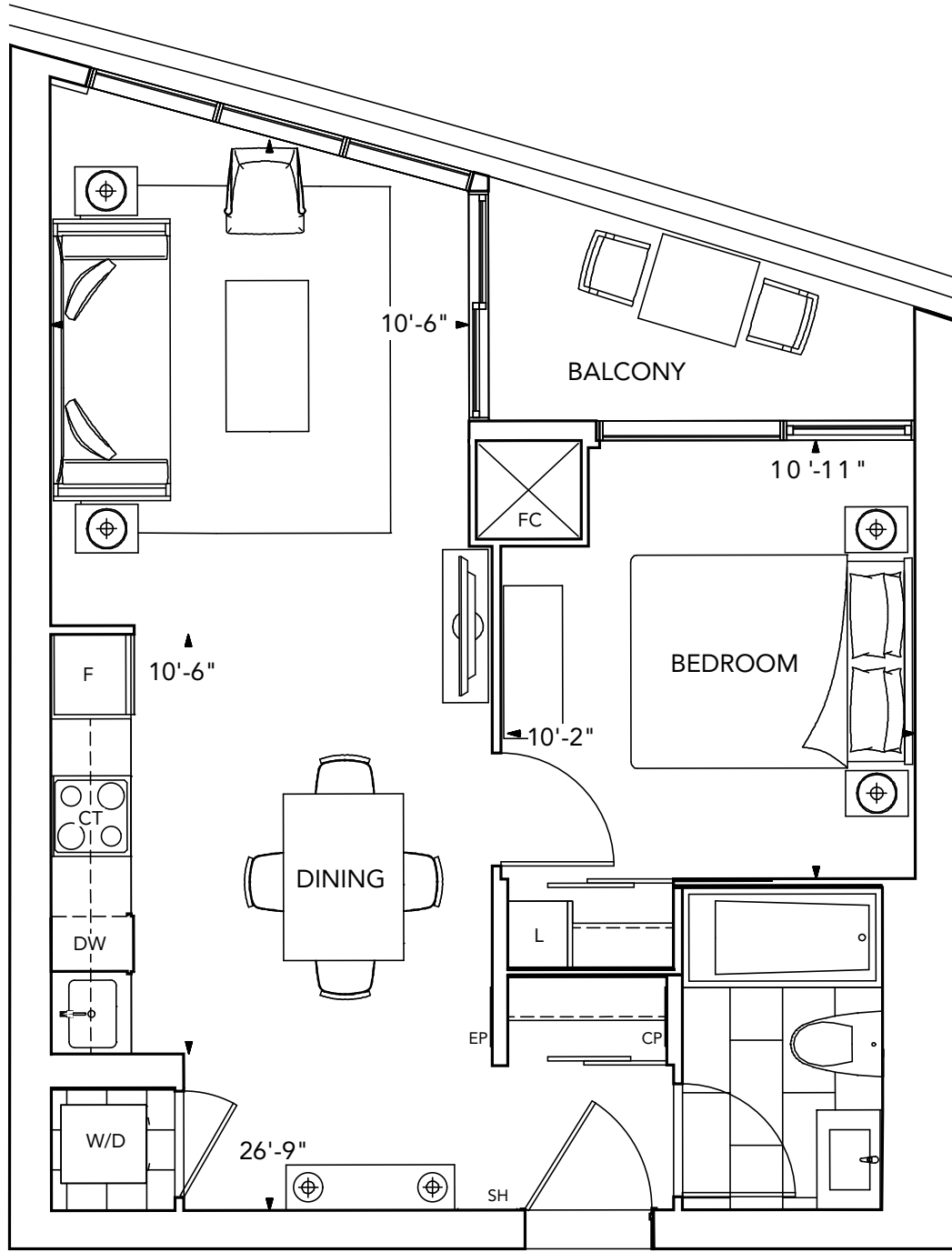


FLOOR 6-27



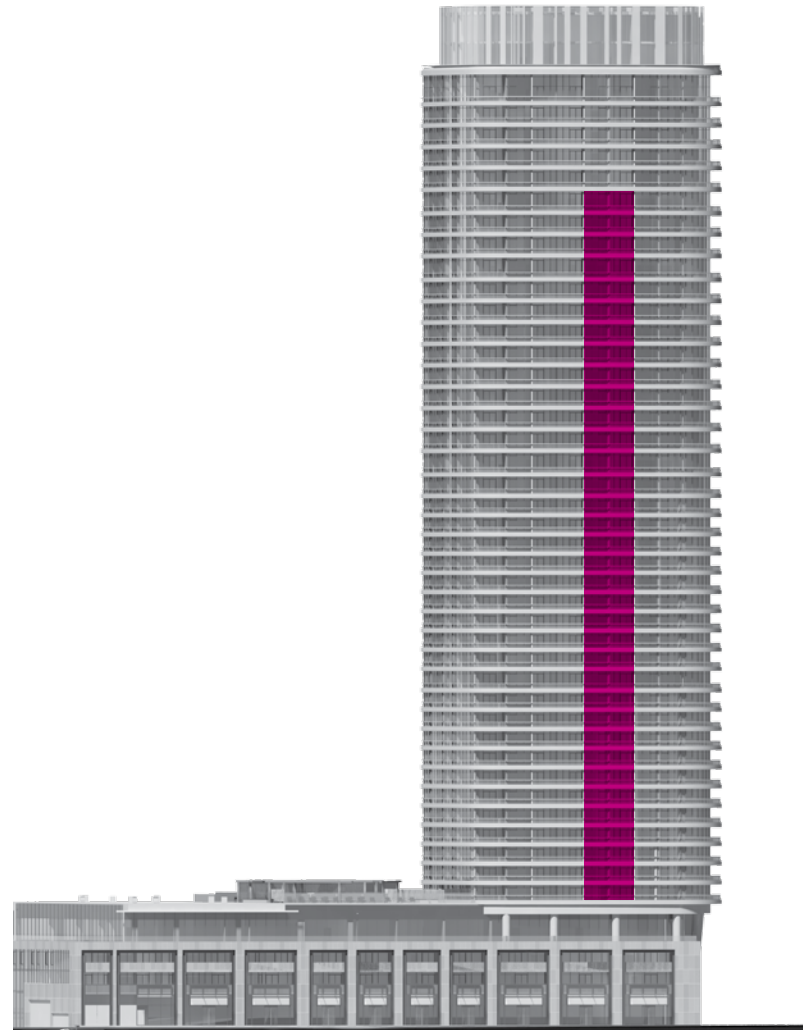
FLOOR 5

All dimensions are approximate and subject to normal construction variances. Dimensions may exceed the useable floor area. Sizes and specifications subject to change without notice. Furniture is displayed for illustration purposes only and does not necessarily reflect the electrical plan for the suite. Suites are sold unfurnished. E.&O.E. ©Tridel 2017. @Tridel, "D" design, Tridel Built for Life, Tridel Built for Life Design, and Built Green. Built for Life are registered Trademarks of Tridel Corporation. Project names and logos are Trademarks of their respective owners. All rights reserved. E.&O.E. February 2017.



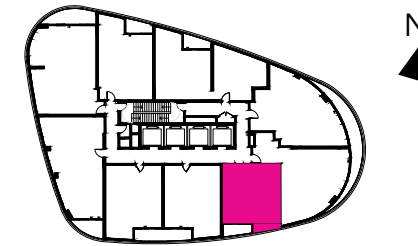
Suite 1B+D-2

1 Bedroom + Den •

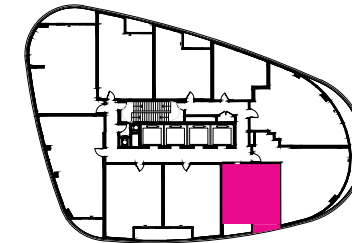


South Face

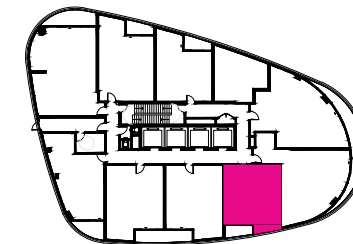
585 Bloor Street East



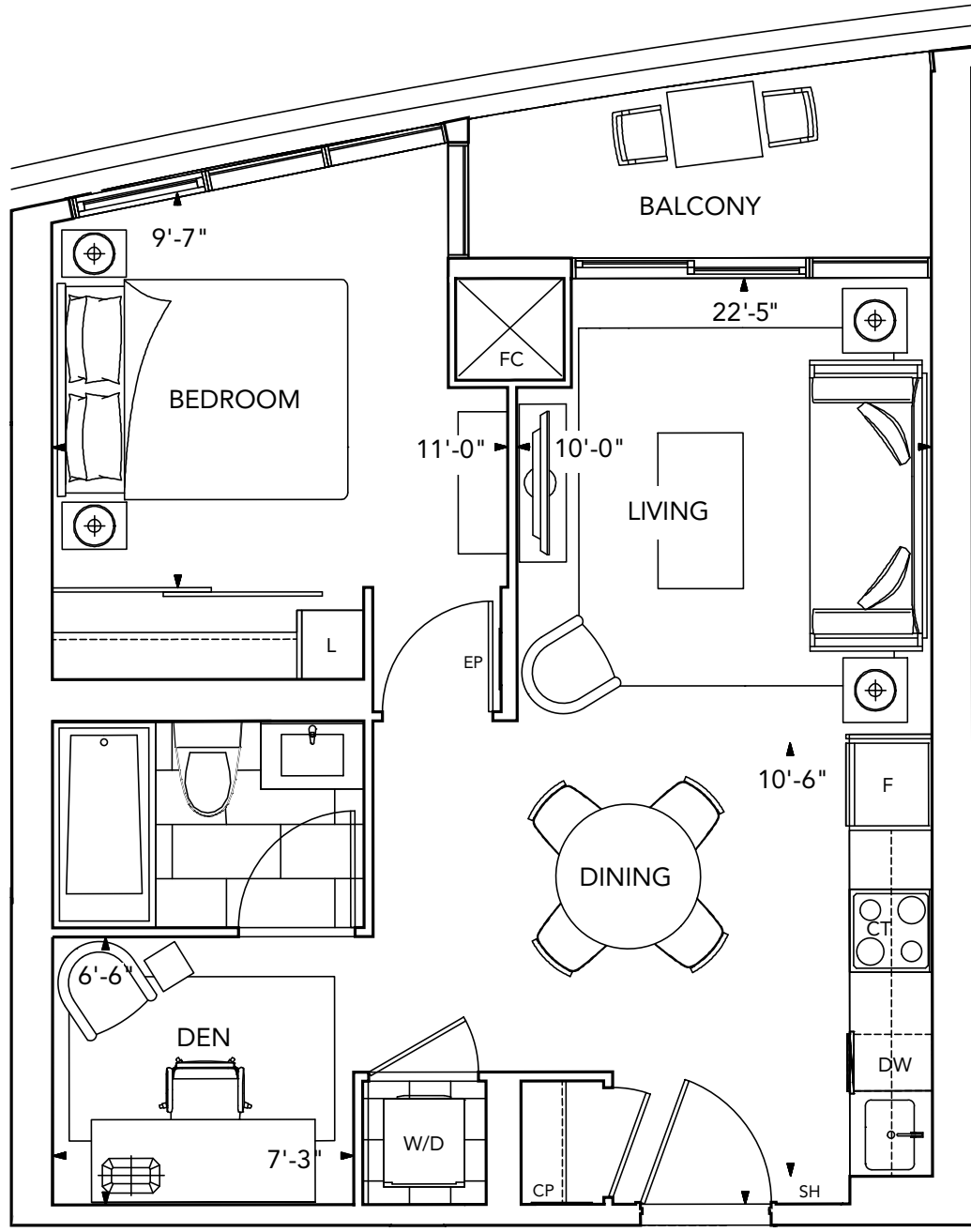
FLOOR 28-39



FLOOR 6-27

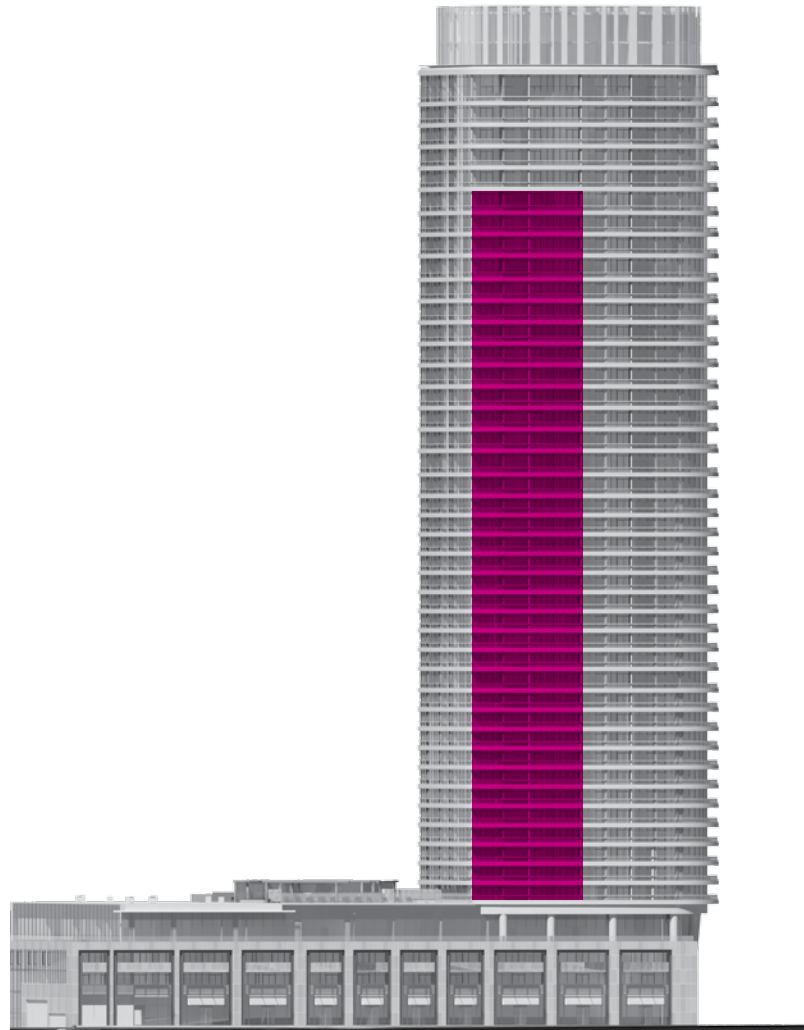


FLOOR 5



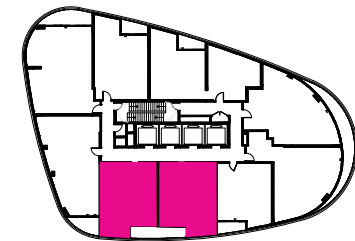
Suite 1C+D-2/1C+DR-2

1 Bedroom + Den •

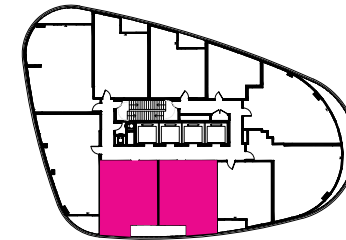


South Face

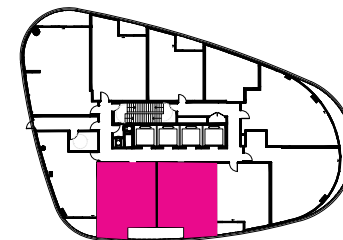
585 Bloor Street East



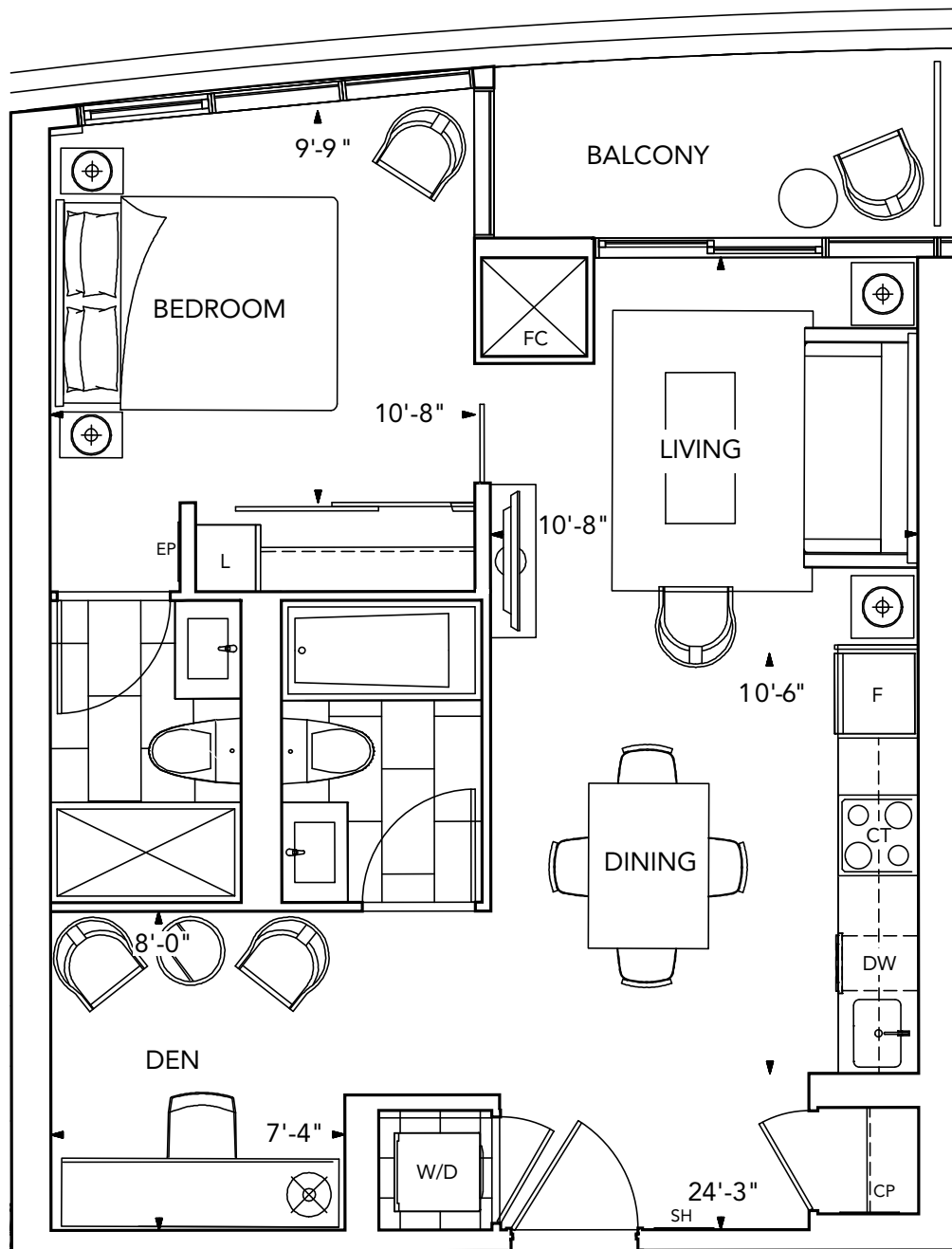
FLOOR 28-39



FLOOR 6-27

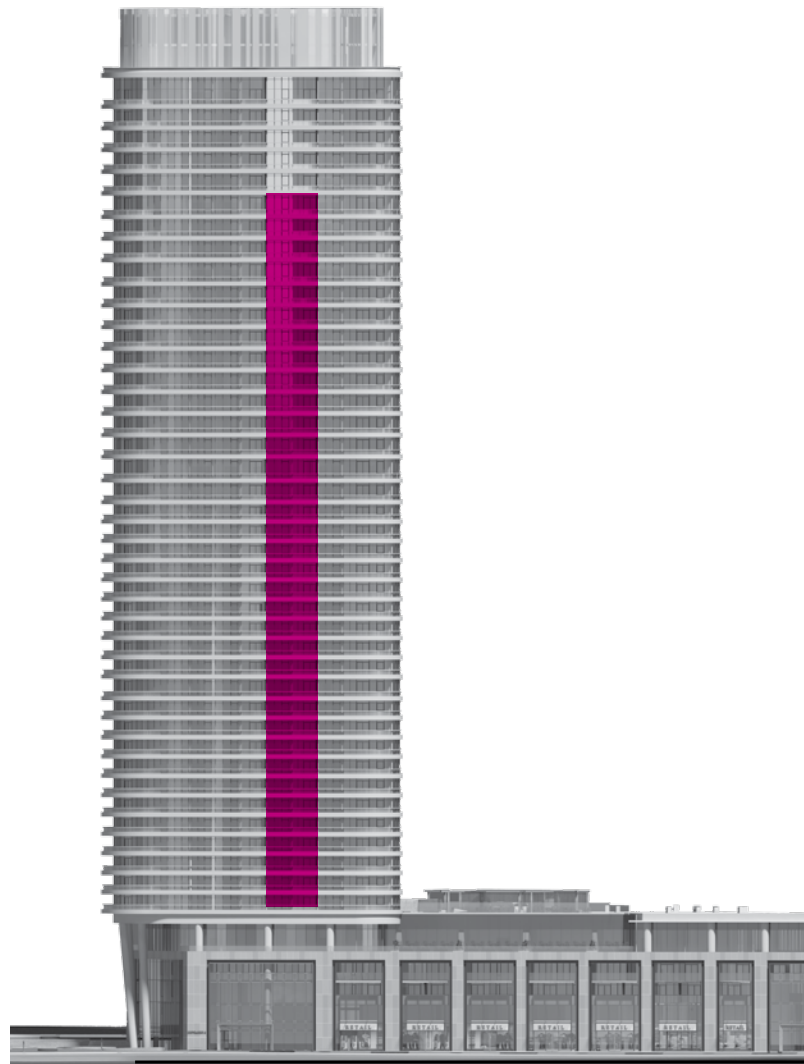


FLOOR 5



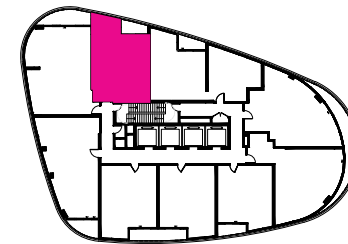
Suite 1D+D-2

1 Bedroom + Den •

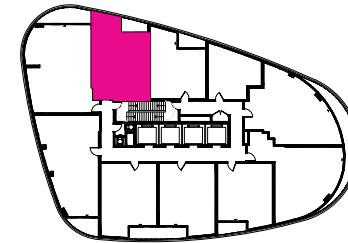


North Face

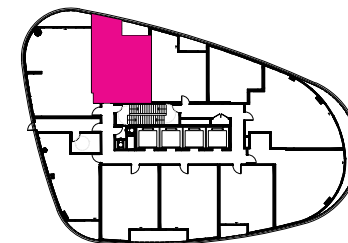
585 Bloor Street East



FLOOR 28-39

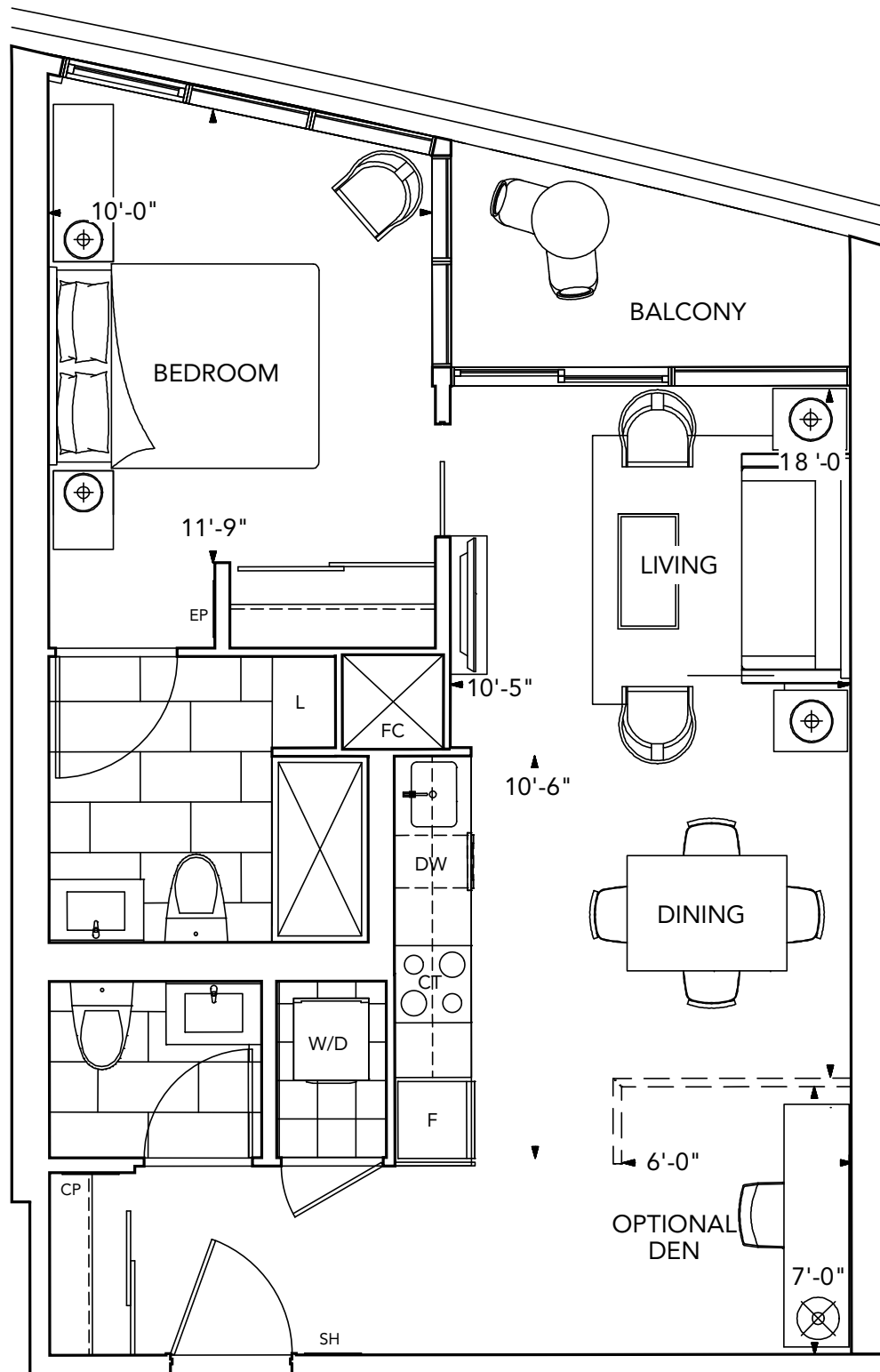


FLOOR 6-27



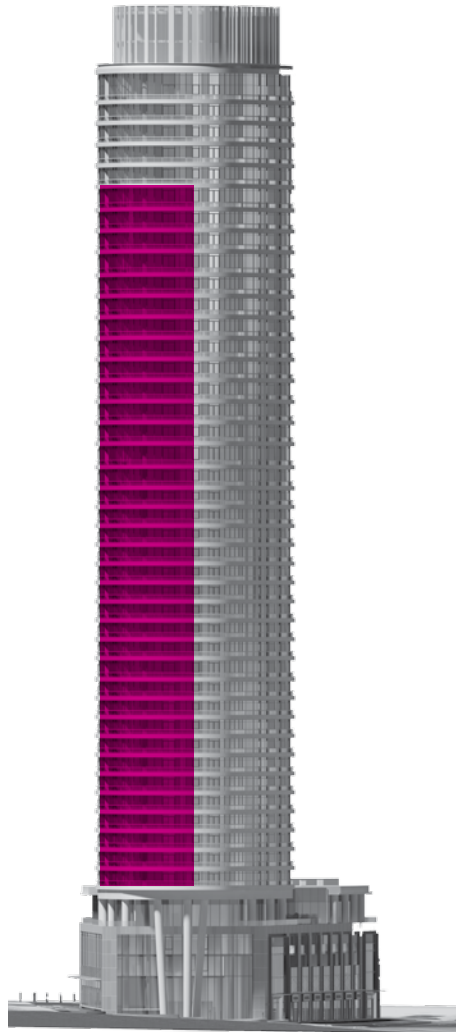
FLOOR 5



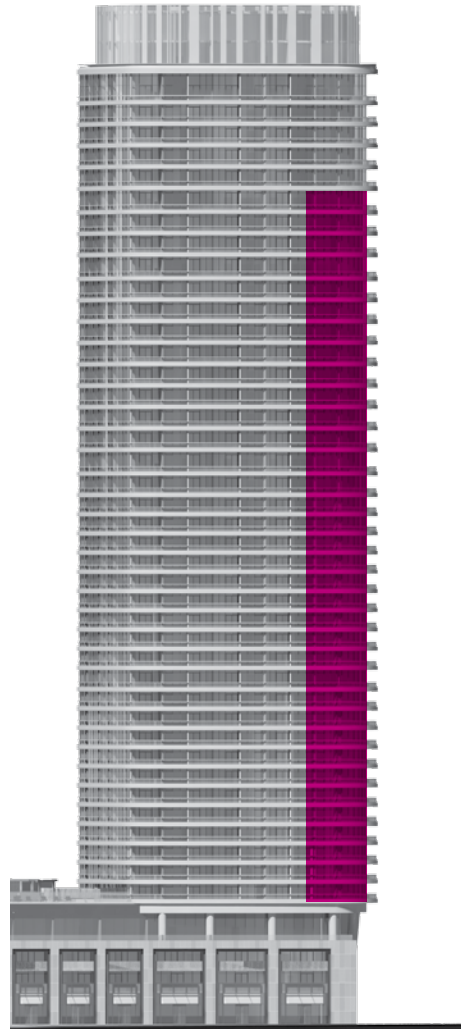


Suite 2A-2

2 Bedroom •

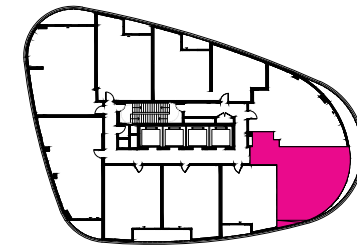


East Face

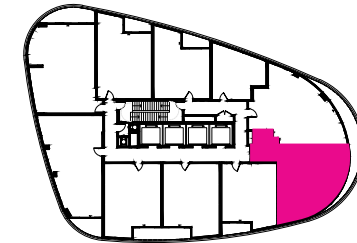


South Face

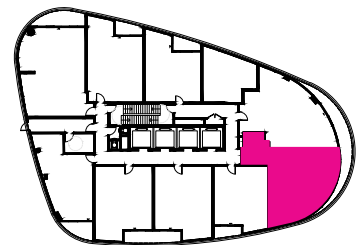
585 Bloor Street East



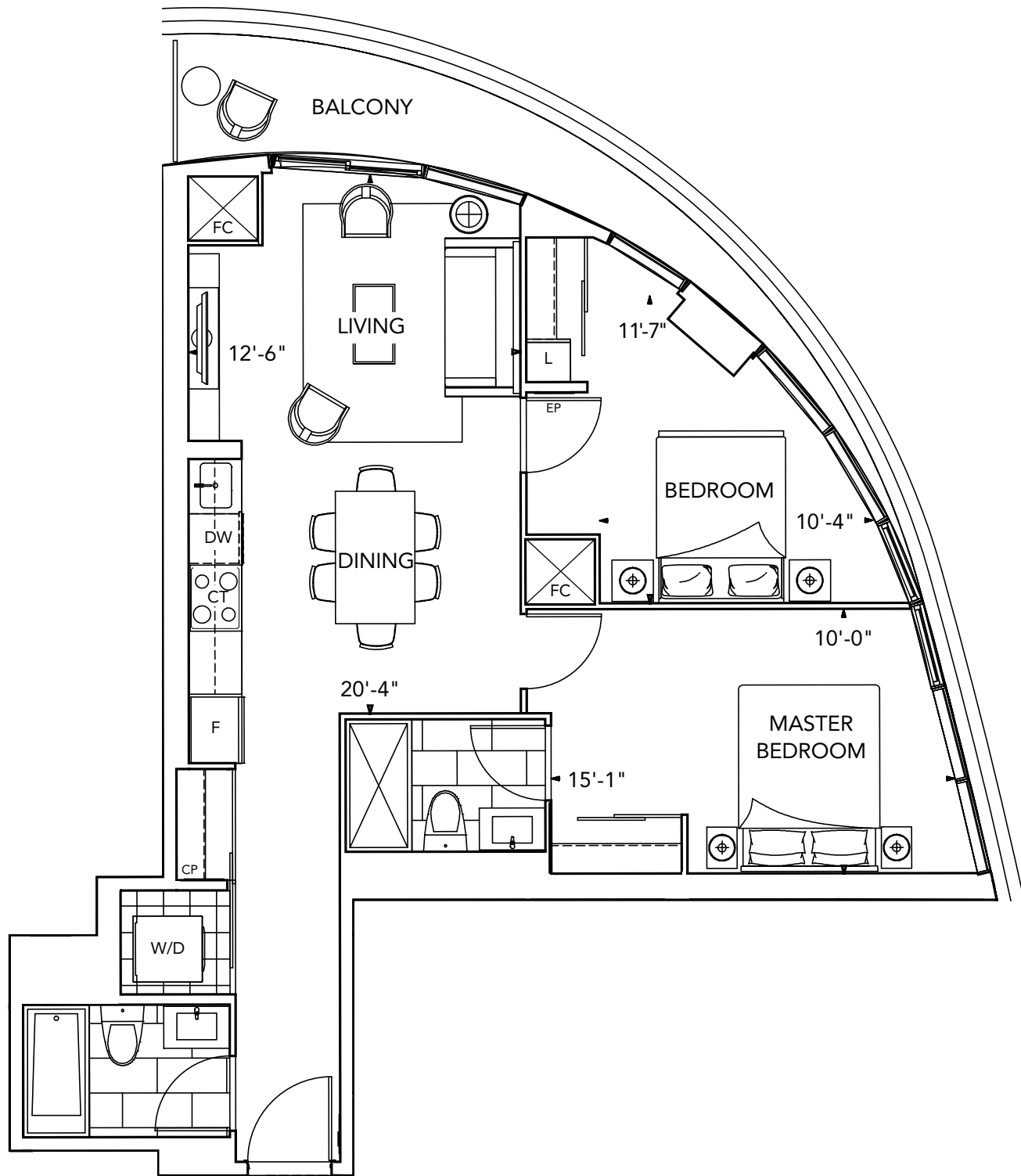
FLOOR 28-39



FLOOR 6-27

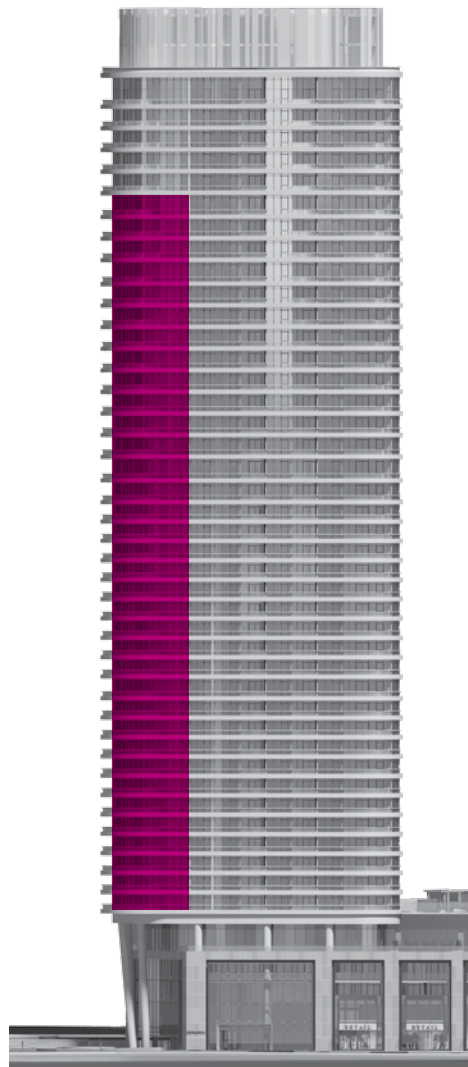


FLOOR 5

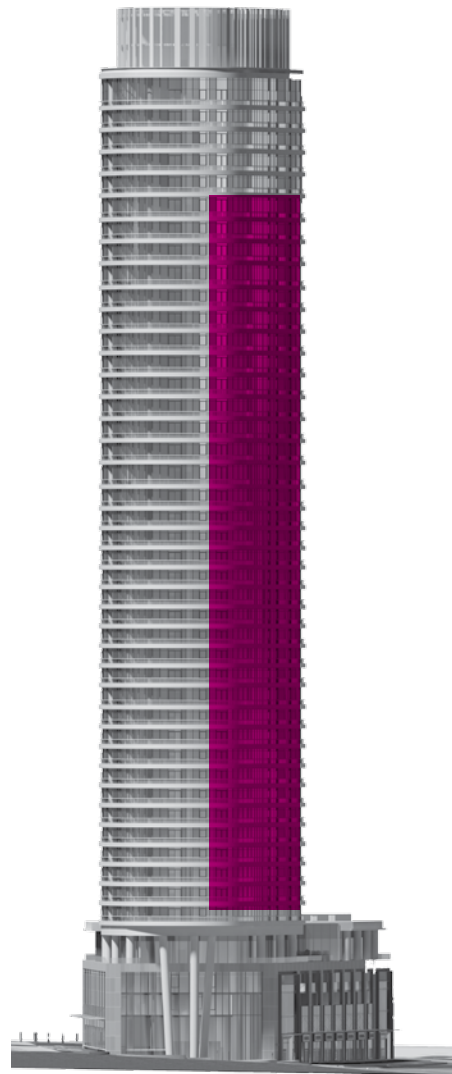


Suite 2B-2

2 Bedroom •

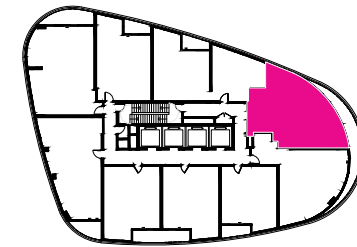


North Face

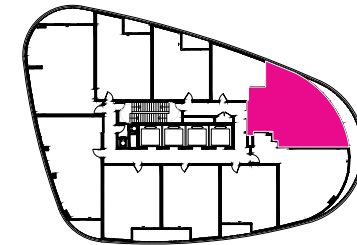


East Face

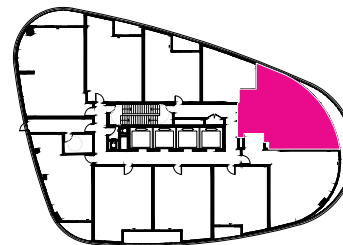
585 Bloor Street East



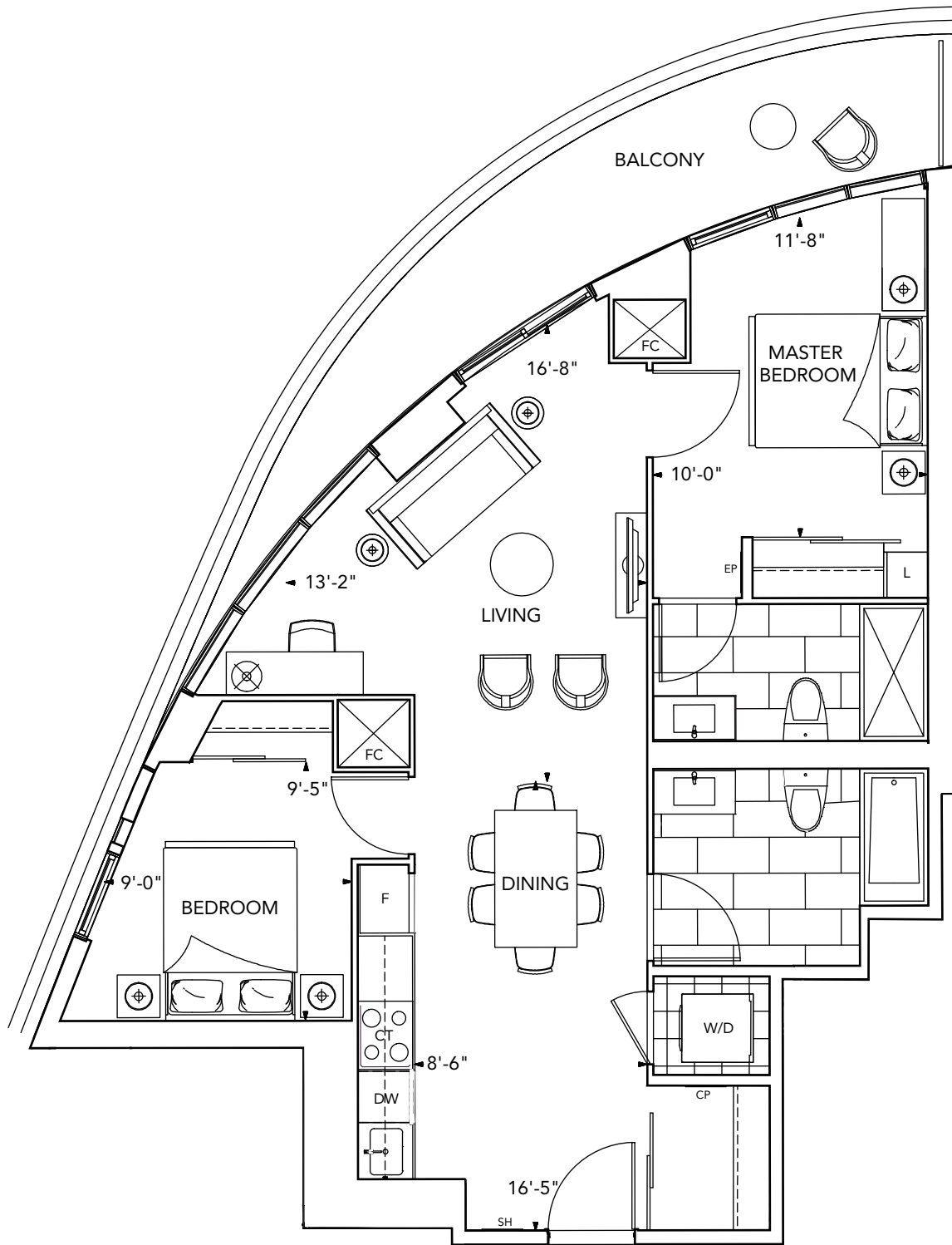
FLOOR 28-39



FLOOR 6-27



FLOOR 5



Suite 2C-2

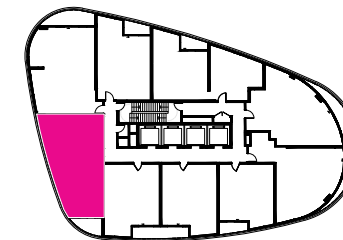
2 Bedroom •



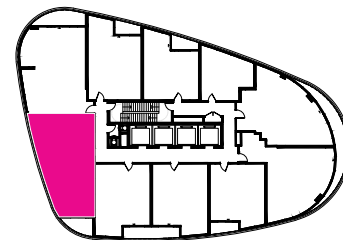
South Face

West Face

585 Bloor Street East

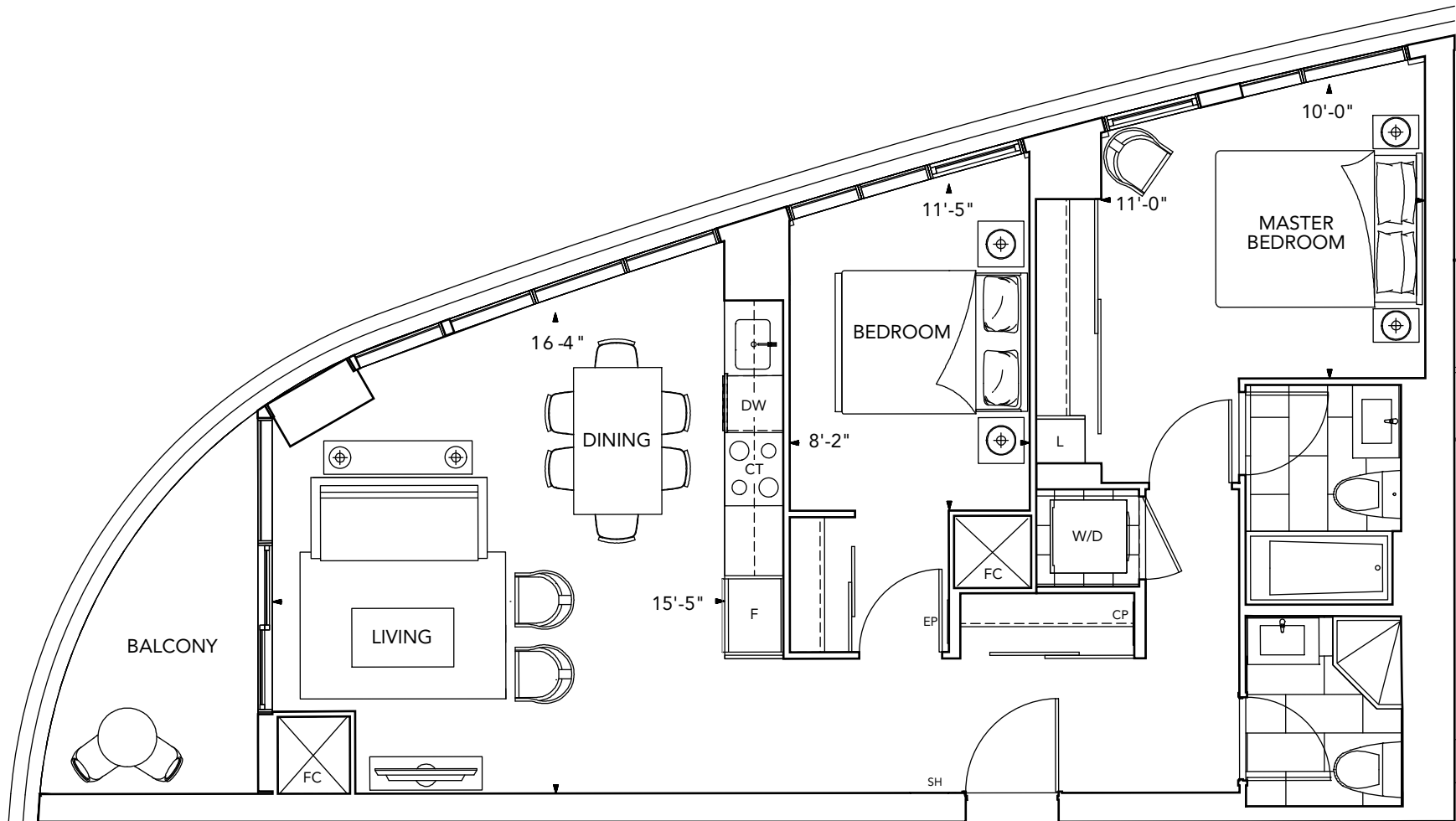


FLOOR 28-39



FLOOR 6-27

All dimensions are approximate and subject to normal construction variances. Dimensions may exceed the useable floor area. Sizes and specifications subject to change without notice. Furniture is displayed for illustration purposes only and does not necessarily reflect the electrical plan for the suite. Suites are sold unfurnished. E.&O.E. ©Tridel 2017. ©Tridel, "D" design, Tridel Built for Life, Tridel Built for Life Design, and Built Green. Built for Life are registered Trademarks of Tridel Corporation. Project names and logos are Trademarks of their respective owners. All rights reserved. E.&O.E. February 2017.



Suite 2D-2

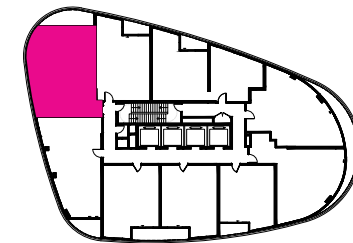
2 Bedroom •



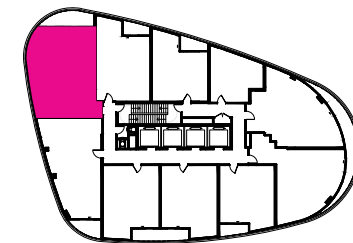
North Face

West Face

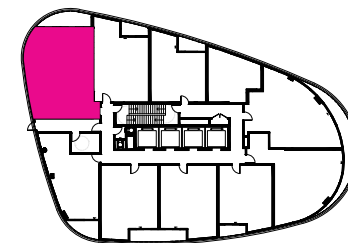
585 Bloor Street East



FLOOR 28-39

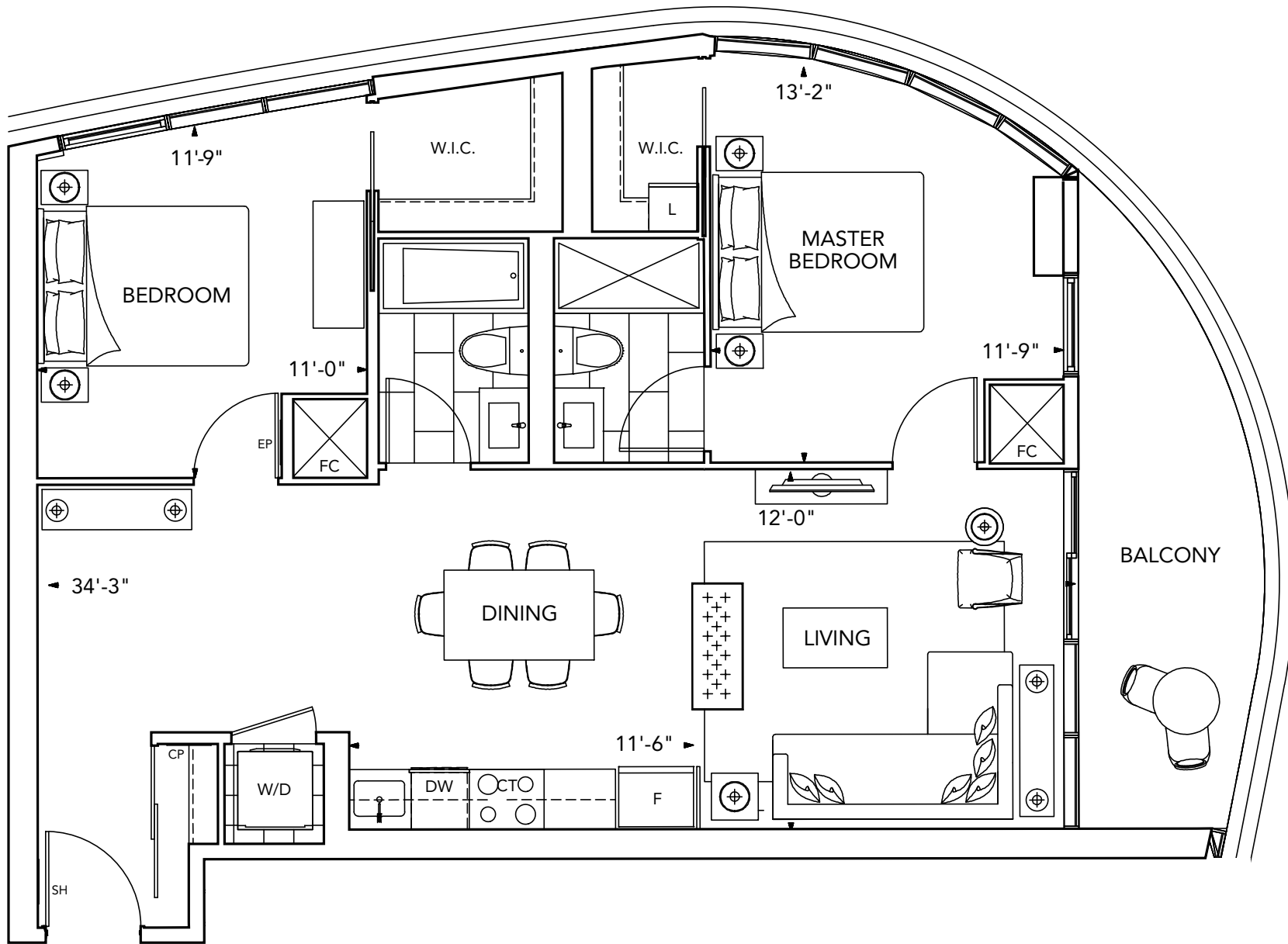


FLOOR 6-27



FLOOR 5

All dimensions are approximate and subject to normal construction variances. Dimensions may exceed the useable floor area. Sizes and specifications subject to change without notice. Furniture is displayed for illustration purposes only and does not necessarily reflect the electrical plan for the suite. Suites are sold unfurnished. E.&O.E. ©Tridel 2017. @Tridel, "D" design, Tridel Built for Life, Tridel Built for Life Design, and Built Green. Built for Life are registered Trademarks of Tridel Corporation. Project names and logos are Trademarks of their respective owners. All rights reserved. E.&O.E. February 2017.

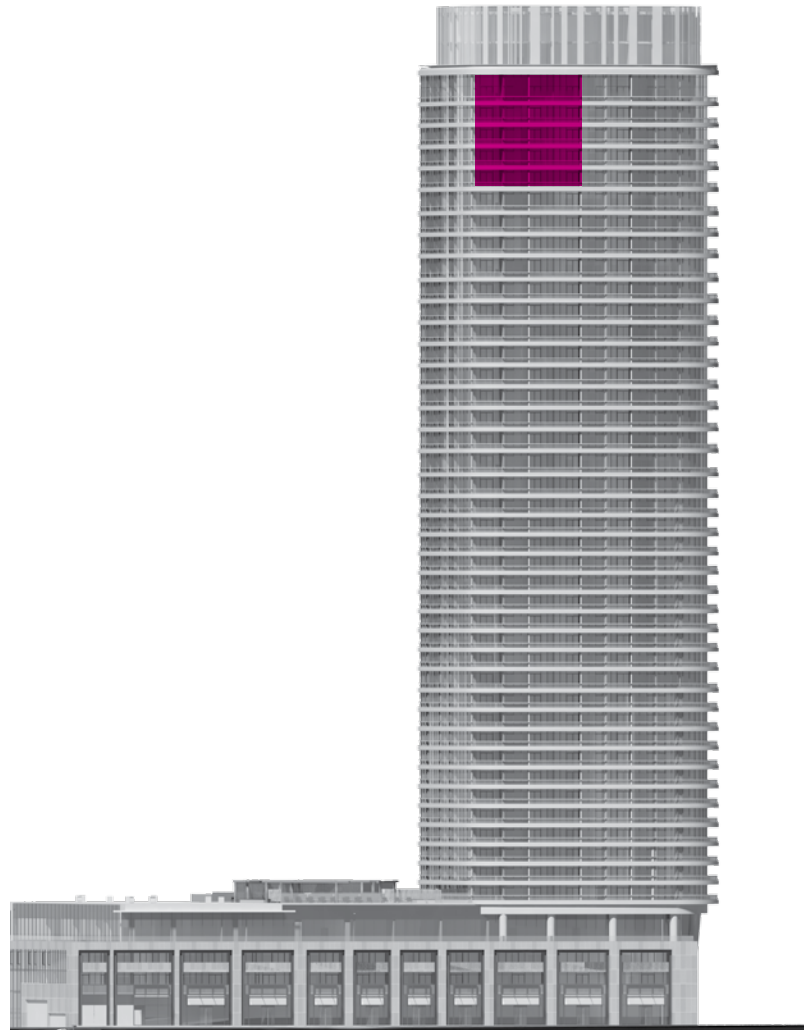


The *Signature* Collection



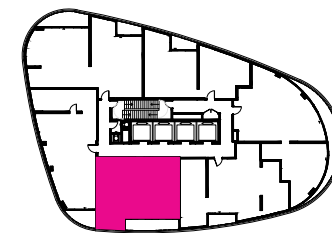
Suite 2E+D-2

2 Bedroom + Den •



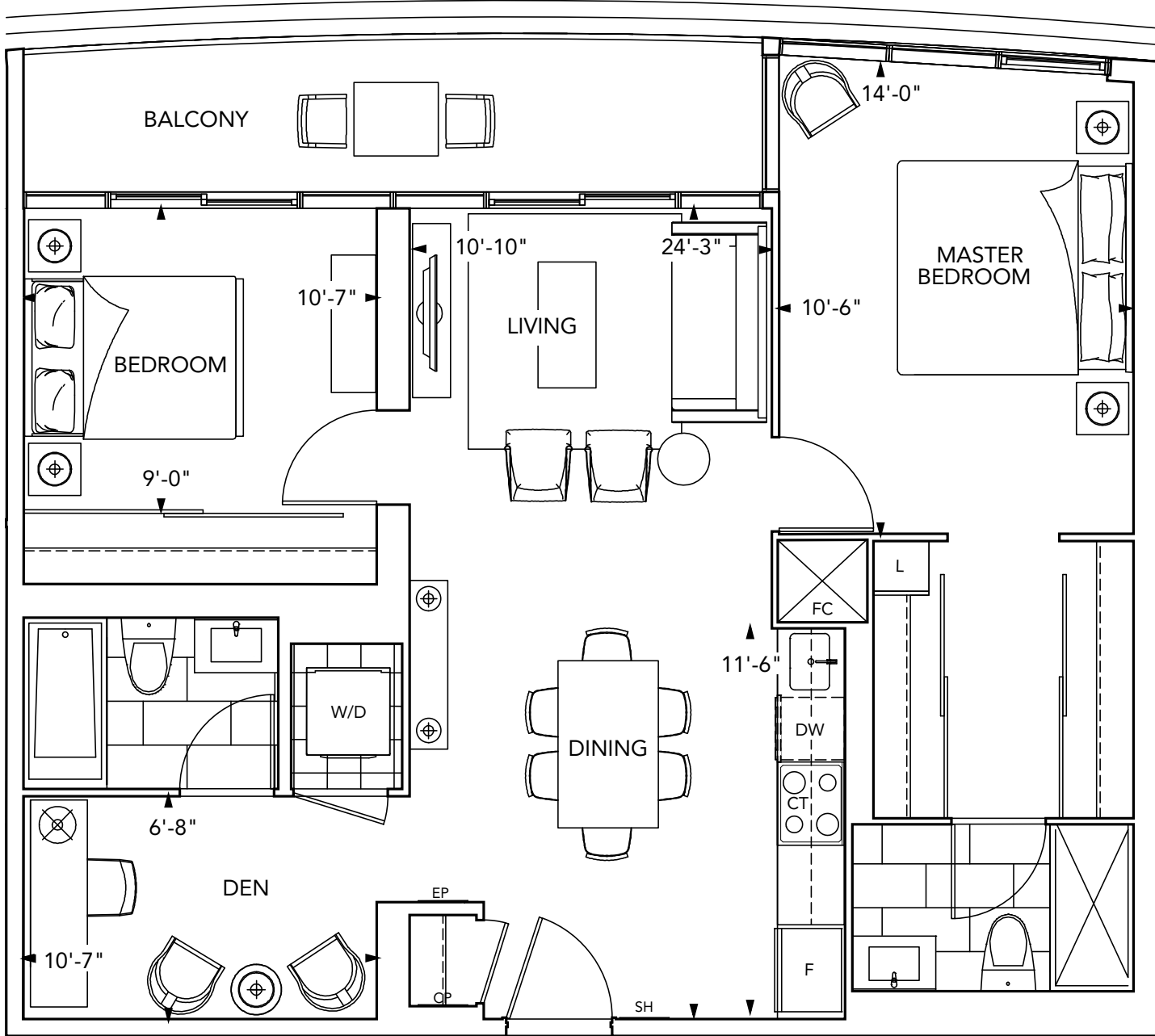
South Face

585 Bloor Street East



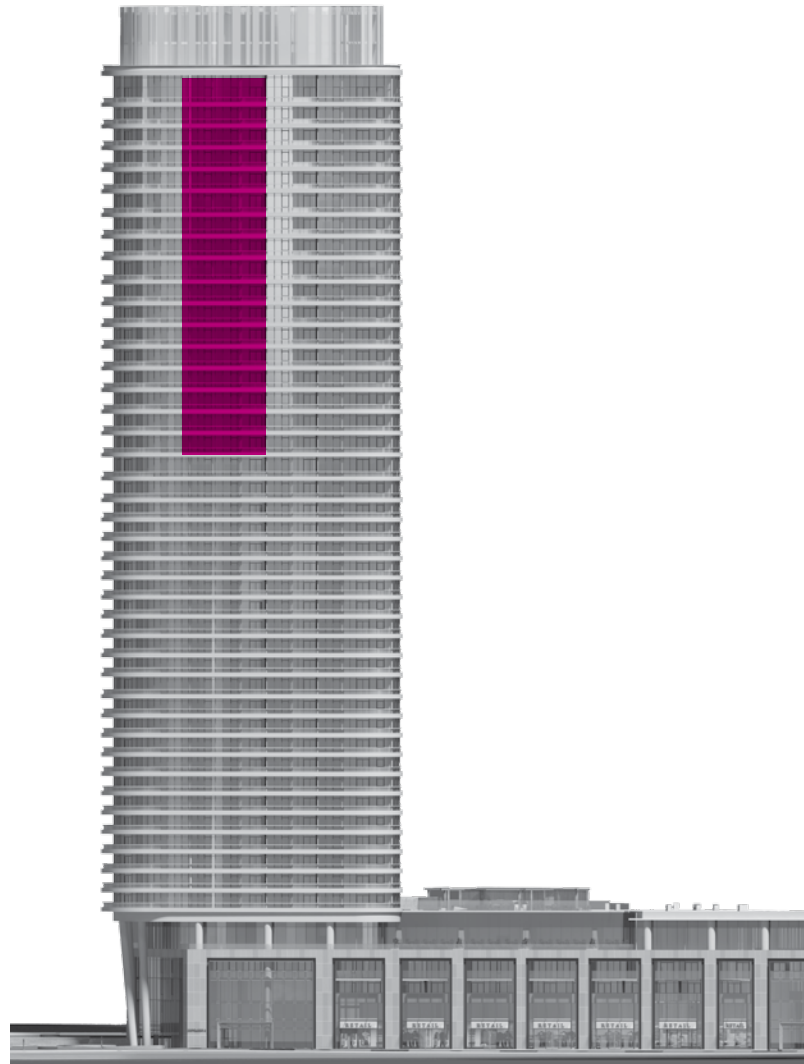
FLOOR 40-44





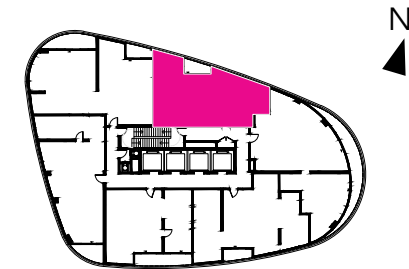
Suite 3A-2

3 Bedroom •

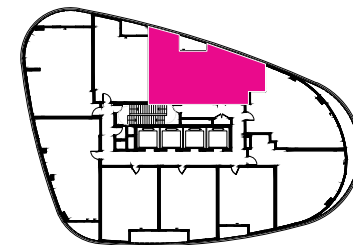


North Face

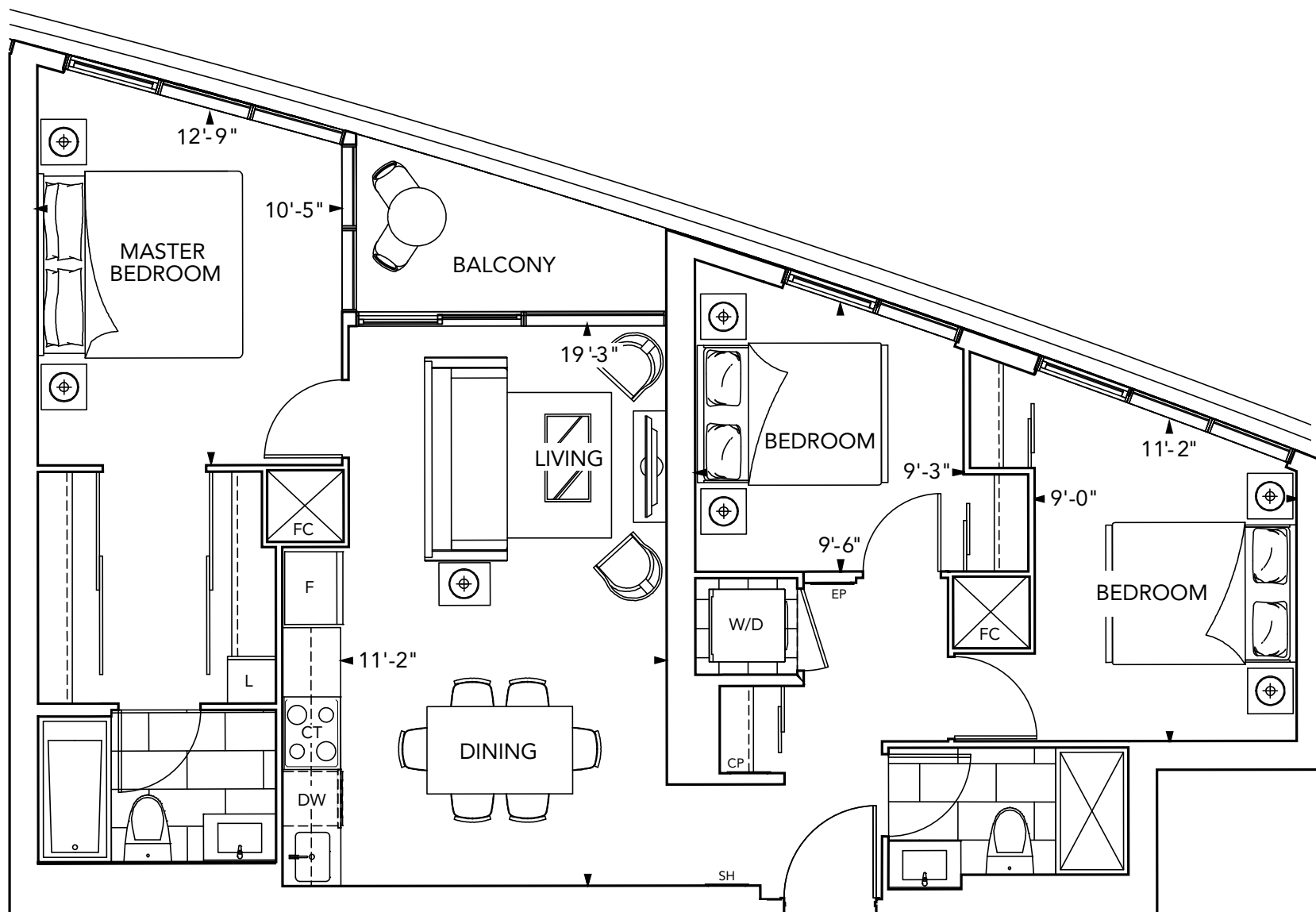
585 Bloor Street East



FLOOR 40-44

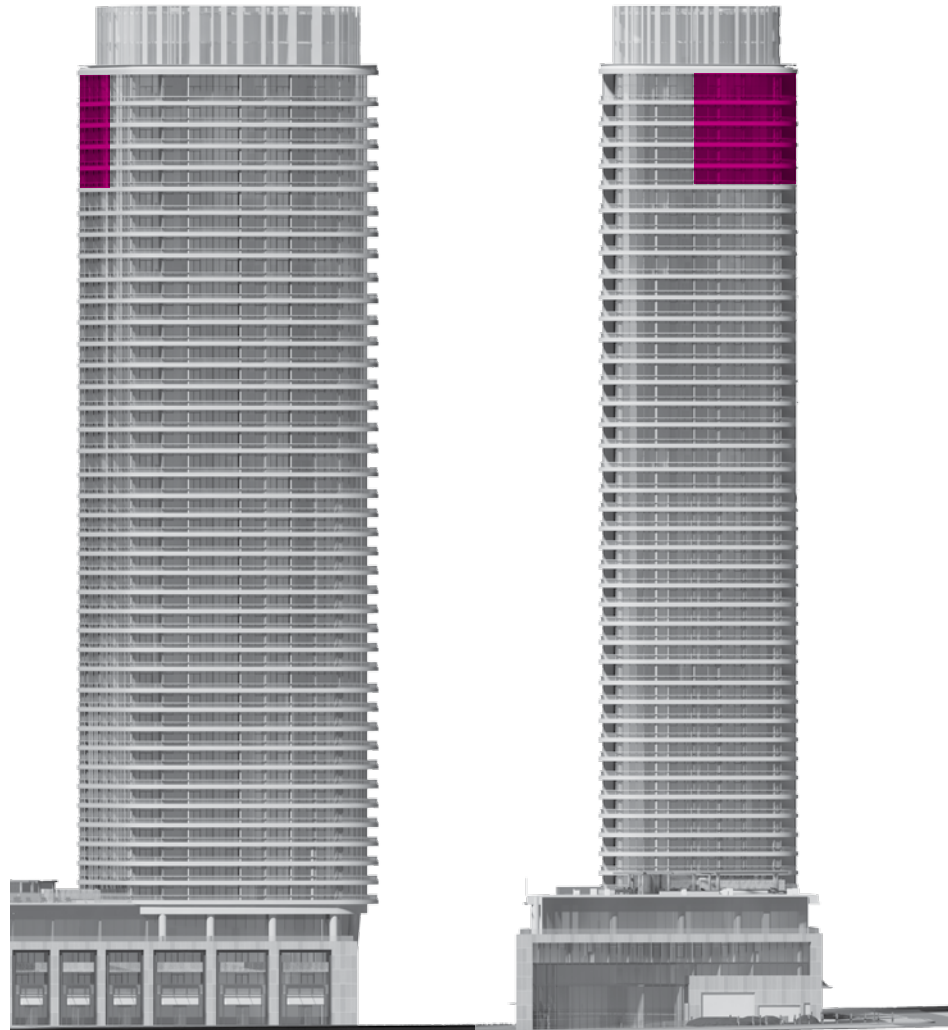


FLOOR 28-39



Suite 3B-2

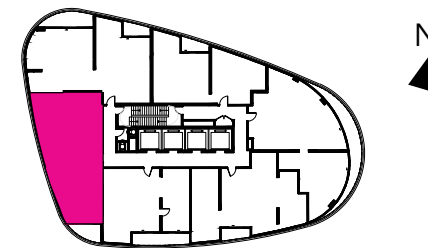
3 Bedroom •



South Face

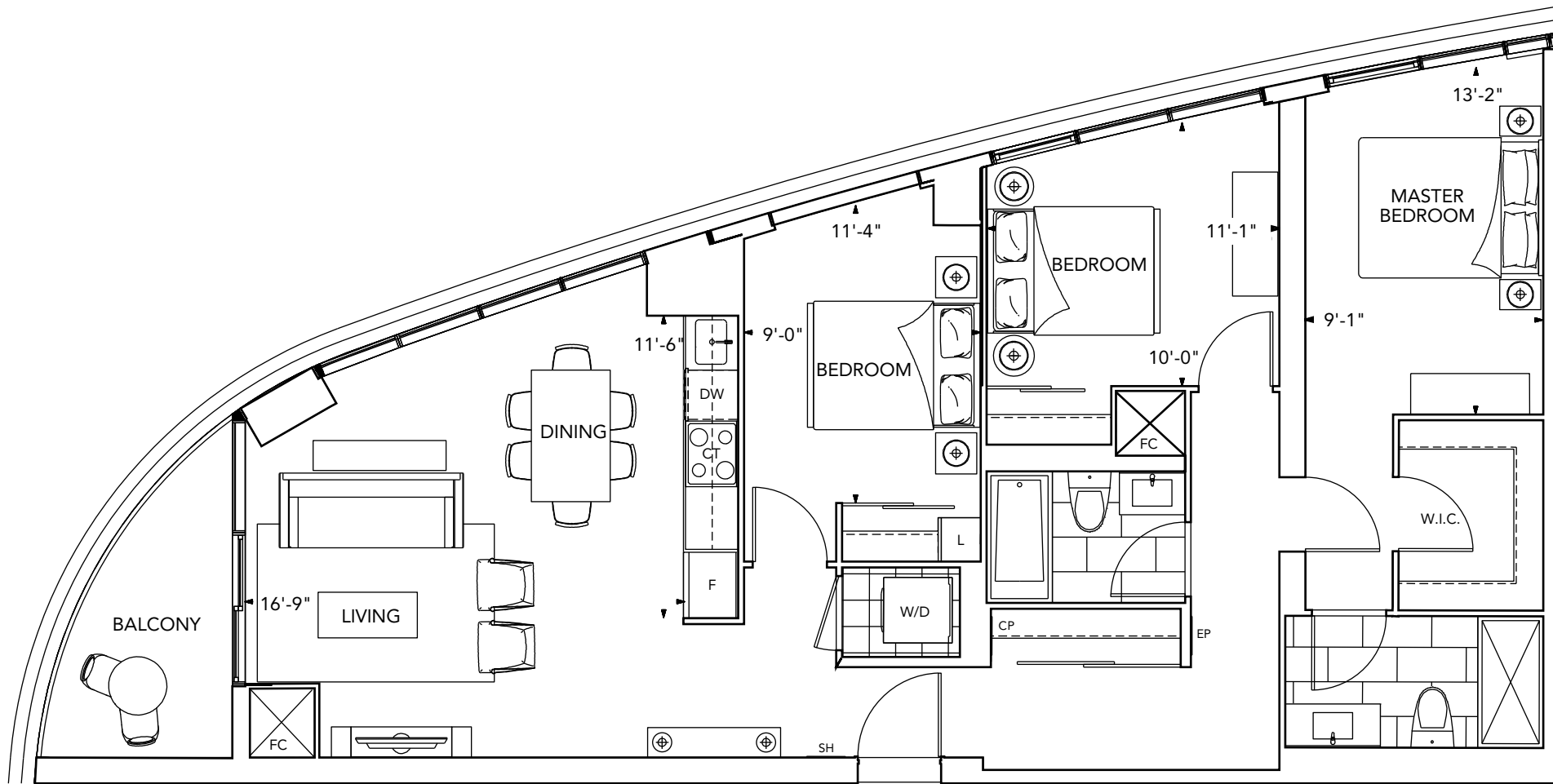
West Face

585 Bloor Street East



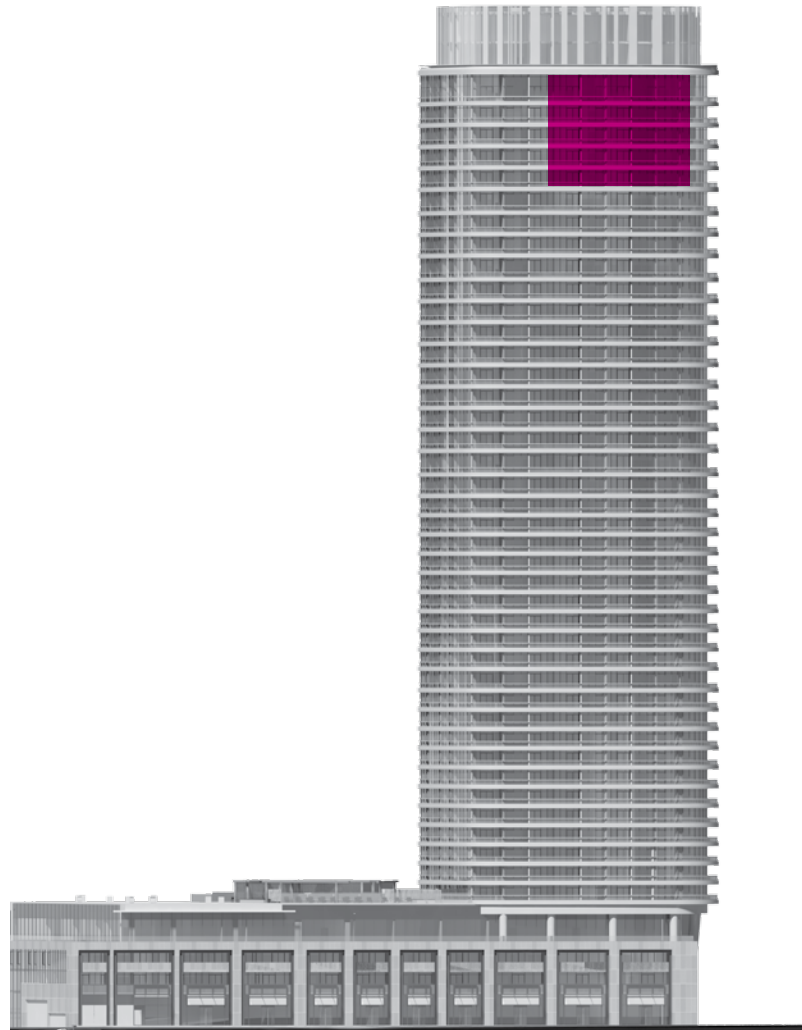
FLOOR 40-44

All dimensions are approximate and subject to normal construction variances. Dimensions may exceed the useable floor area. Sizes and specifications subject to change without notice. Furniture is displayed for illustration purposes only and does not necessarily reflect the electrical plan for the suite. Suites are sold unfurnished. E.&O.E. ©Tridel 2017. @Tridel, "D" design, Tridel Built for Life, Tridel Built for Life Design, and Built Green. Built for Life are registered Trademarks of Tridel Corporation. Project names and logos are Trademarks of their respective owners. All rights reserved. E.&O.E. February 2017.



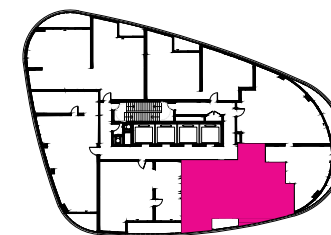
Suite 3C-2

3 Bedroom •

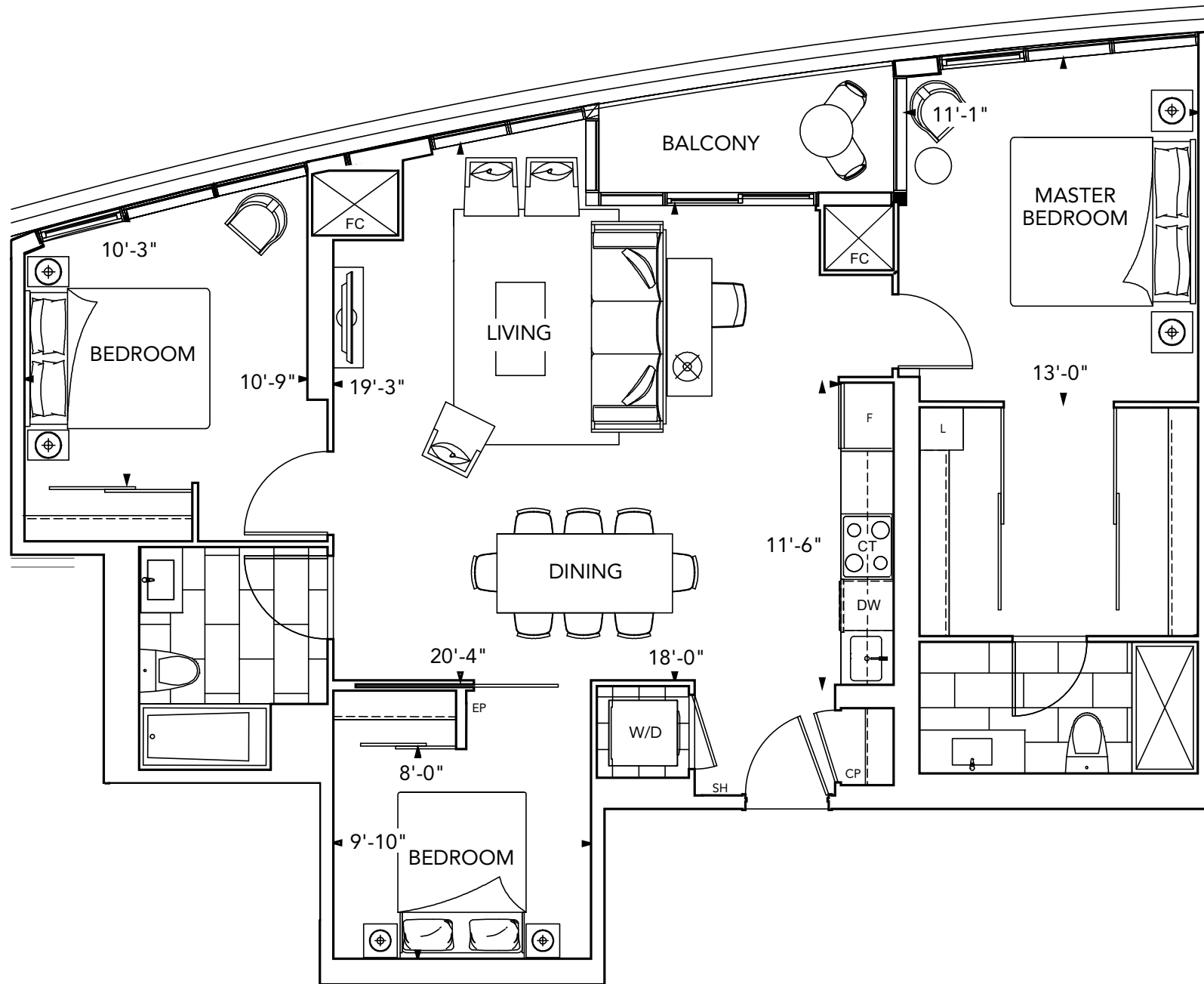


South Face

585 Bloor Street East

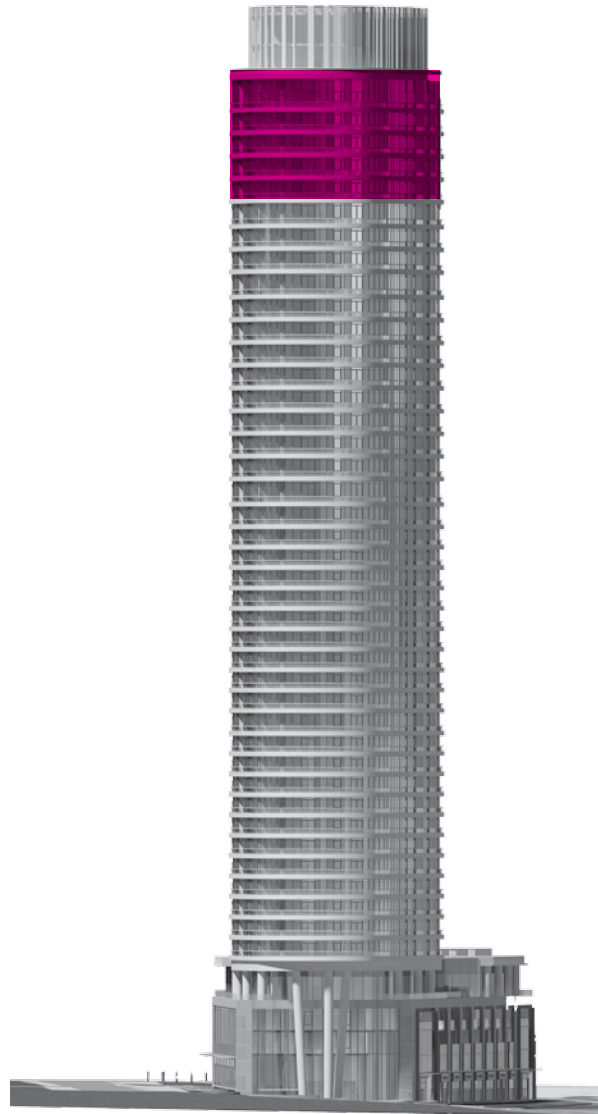


FLOOR 40-44



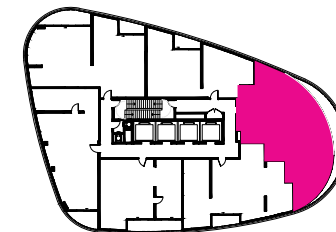
Suite 3D-2

3 Bedroom •



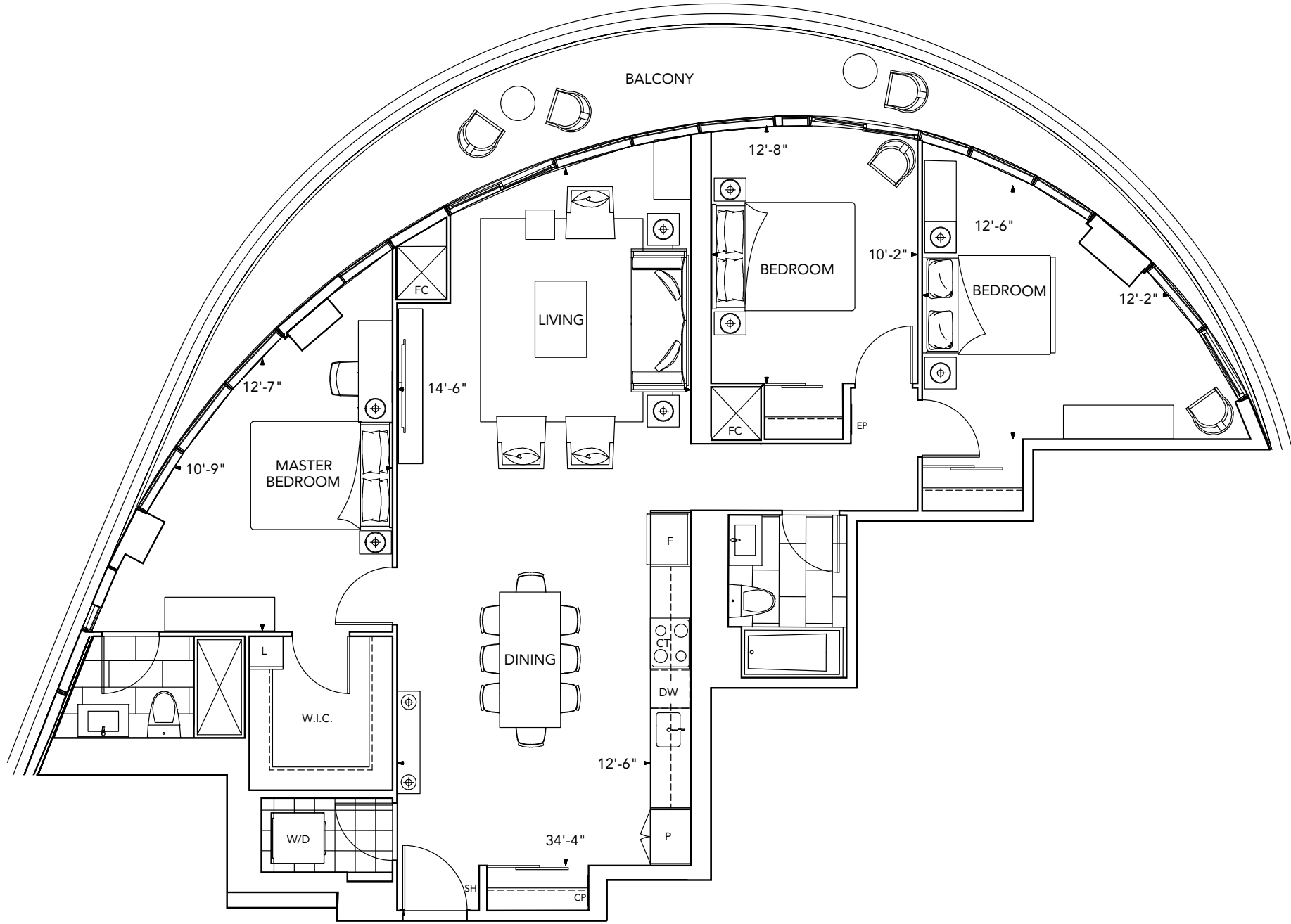
East Face

585 Bloor Street East



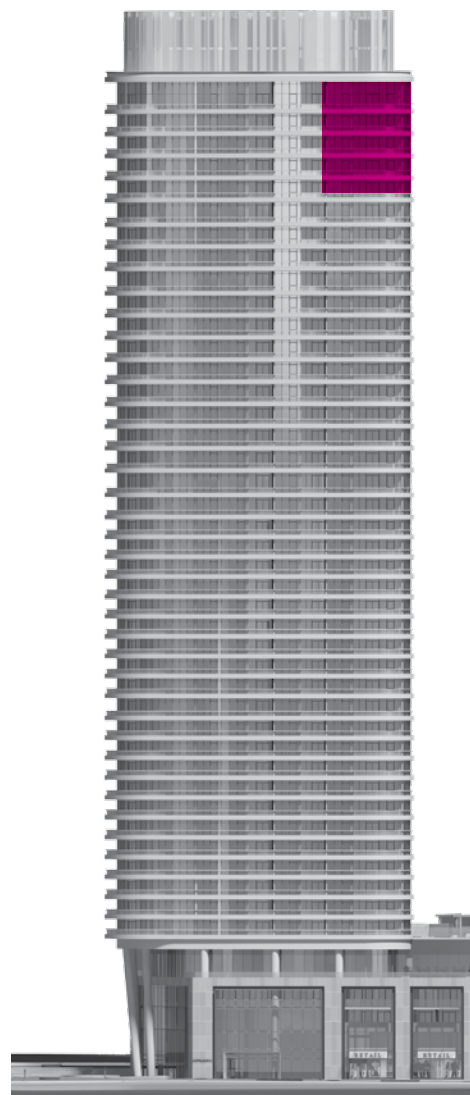
FLOOR 40-44

All dimensions are approximate and subject to normal construction variances. Dimensions may exceed the useable floor area. Sizes and specifications subject to change without notice. Furniture is displayed for illustration purposes only and does not necessarily reflect the electrical plan for the suite. Suites are sold unfurnished. E.&O.E. ©Tridel 2017. @Tridel, "D" design, Tridel Built for Life, Tridel Built for Life Design, and Built Green. Built for Life are registered Trademarks of Tridel Corporation. Project names and logos are Trademarks of their respective owners. All rights reserved. E.&O.E. February 2017.

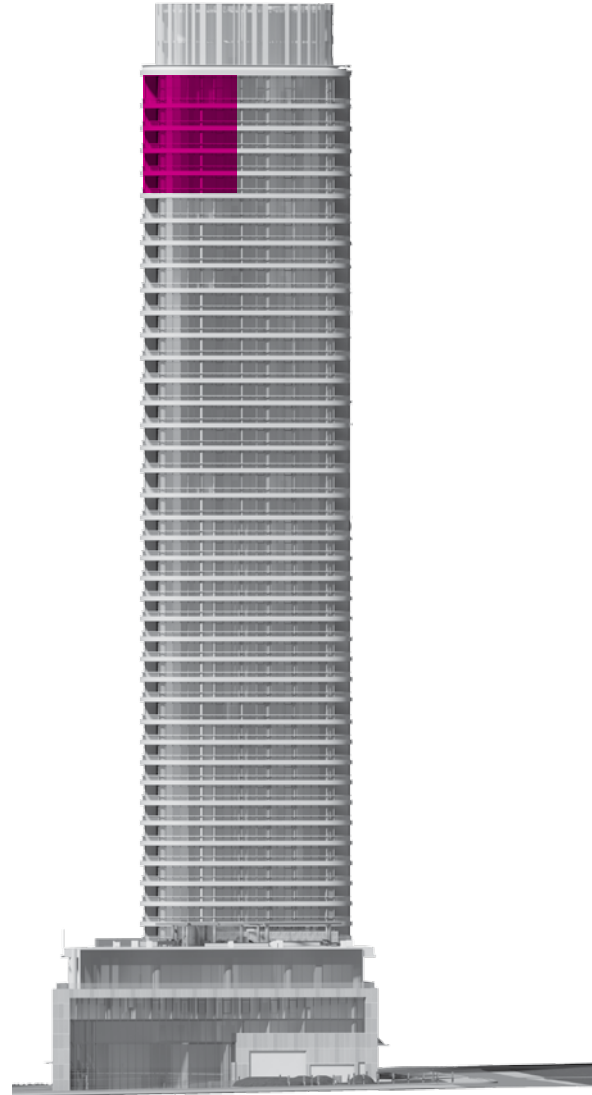


Suite 3E-2

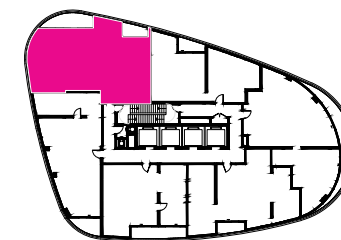
3 Bedroom •



North Face



West Face



FLOOR 40-44



585 Bloor Street East

All dimensions are approximate and subject to normal construction variances. Dimensions may exceed the useable floor area. Sizes and specifications subject to change without notice. Furniture is displayed for illustration purposes only and does not necessarily reflect the electrical plan for the suite. Suites are sold unfurnished. E.&O.E. ©Tridel 2017. @Tridel, "D" design, Tridel Built for Life, Tridel Built for Life Design, and Built Green. Built for Life are registered Trademarks of Tridel Corporation. Project names and logos are Trademarks of their respective owners. All rights reserved. E.&O.E. February 2017.

