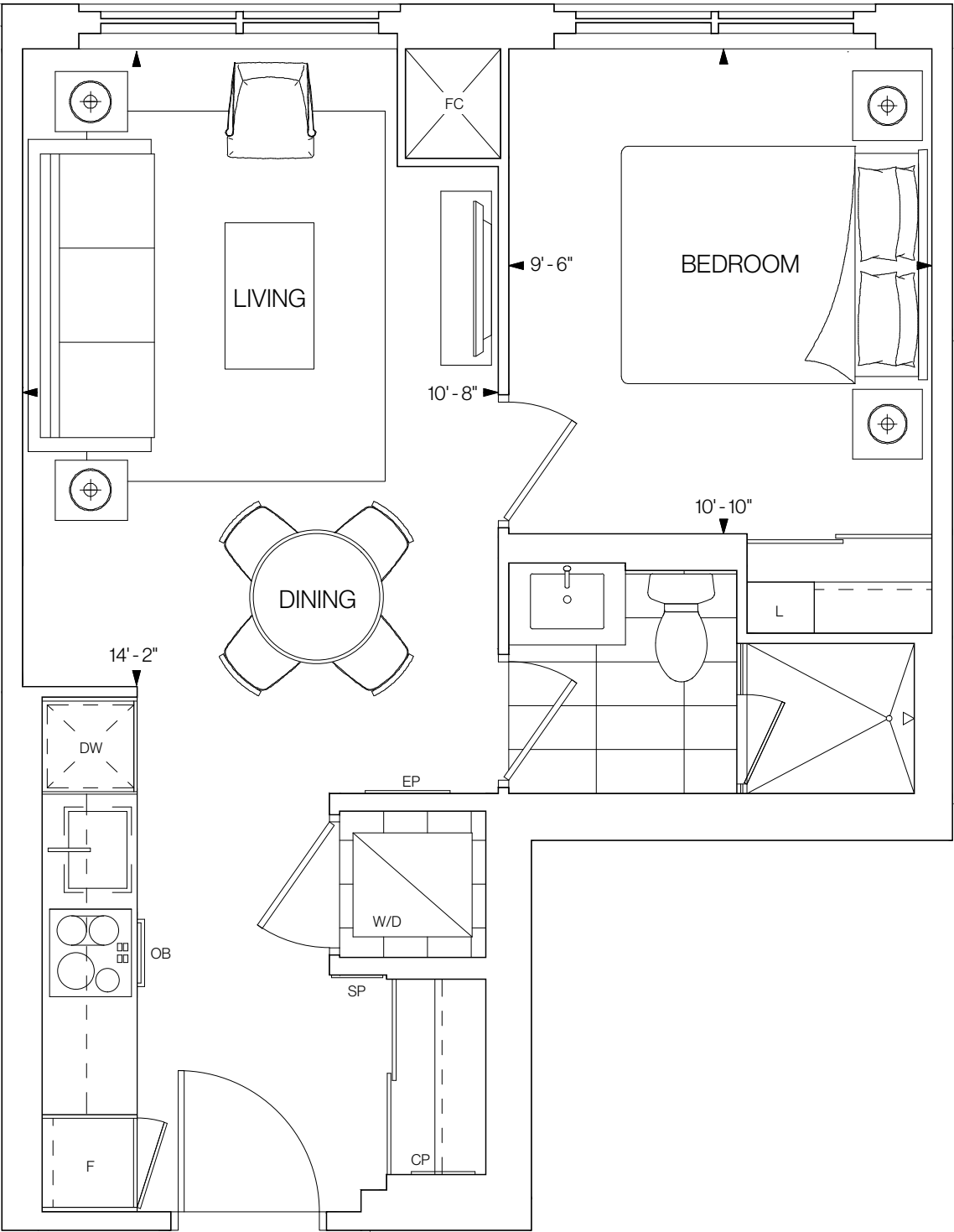
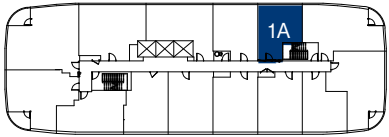


1A

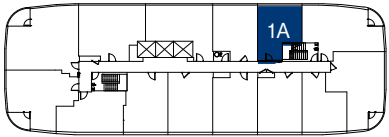
502 SQ.FT.
1 BEDROOM 1 BATHROOM
NORTHEAST FACING

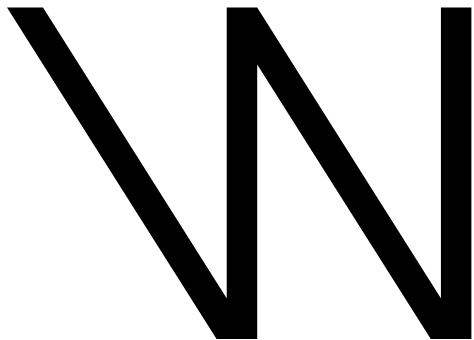


FLOOR 6



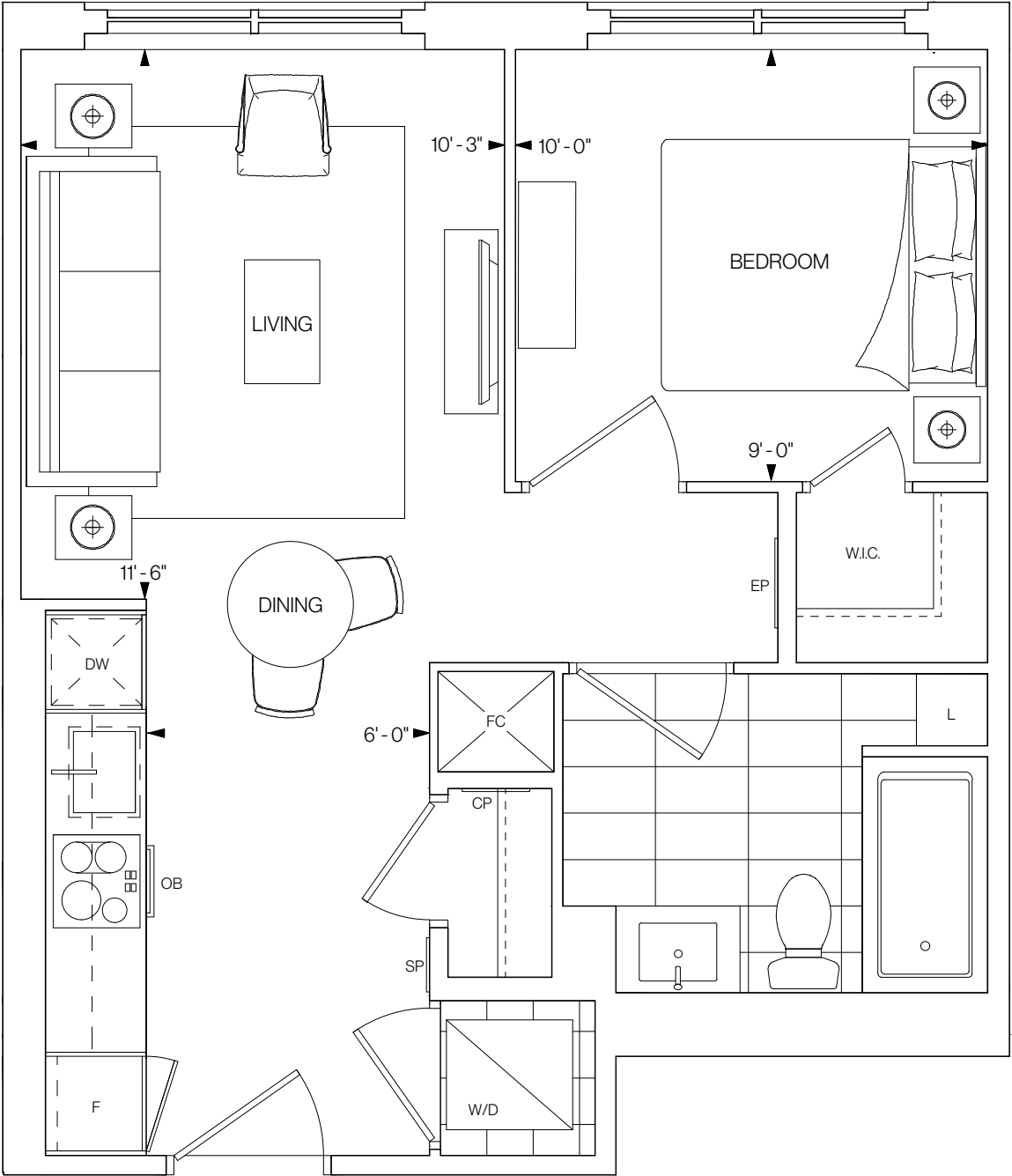
FLOORS 7-12



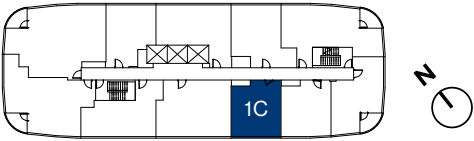


1C

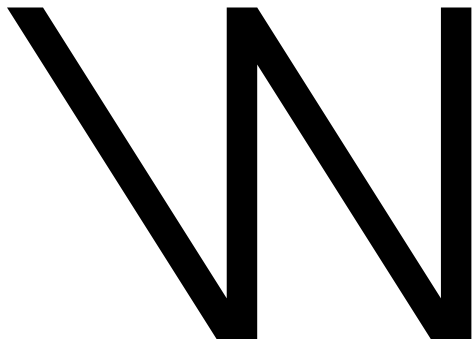
509 SQ.FT.
1 BEDROOM 1 BATHROOM
SOUTHWEST FACING



FLOORS 14-20

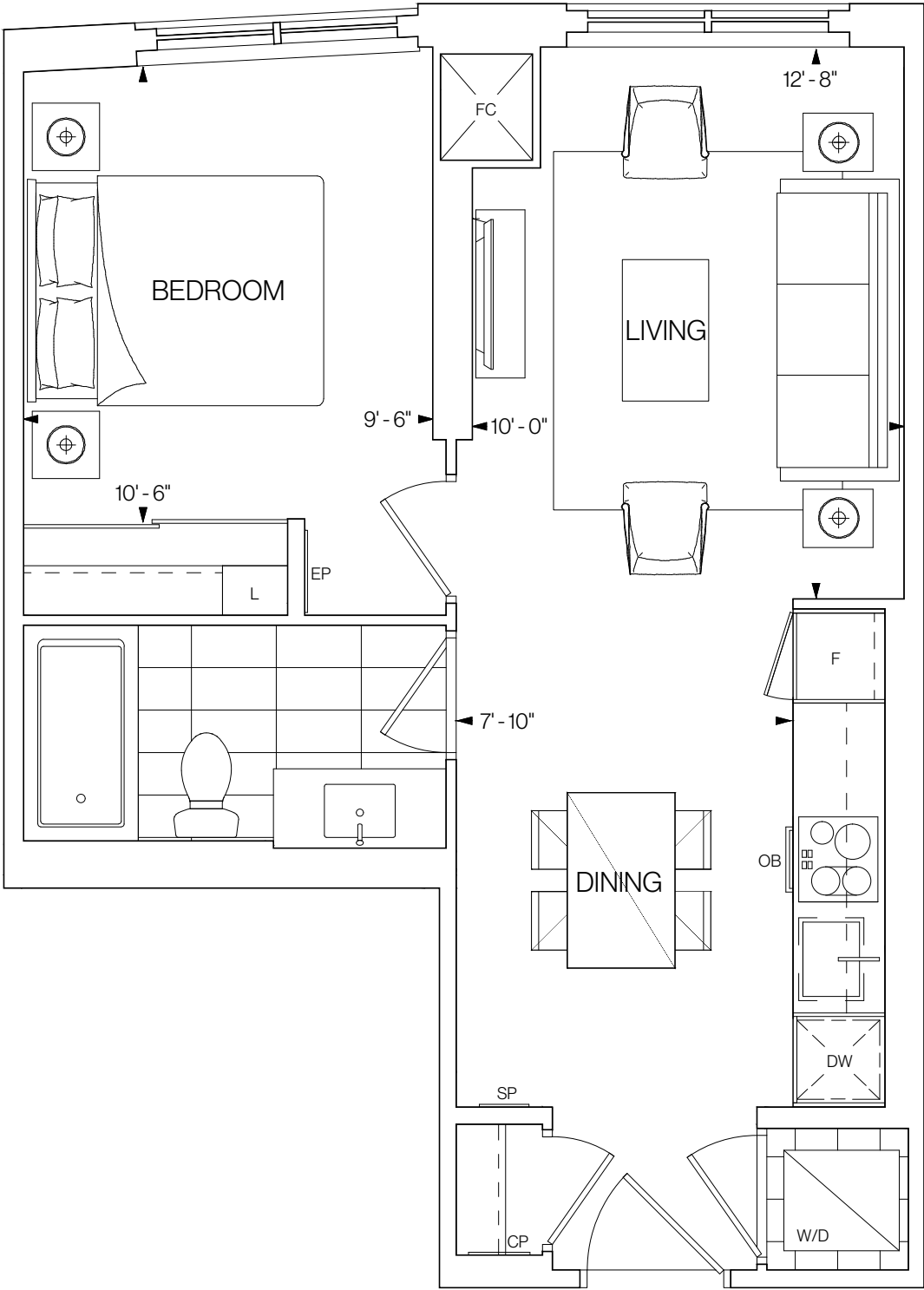


©Tridel 2020. *Tridel, "D" design, Tridel Built for Life and Tridel Built for Life Design are registered Trademarks of Tridel Corporation. Project names and logos are Trademarks of their respective owners. All rights reserved. Buildings and views not to scale. All dimensions are approximate and subject to normal construction variances. Dimensions may exceed the usable floor area. Sizes and specifications subject to change without notice. Actual usable floor space may vary from the stated floor area. Furniture is displayed for illustration purposes only and does not necessarily reflect the electrical plan for the suite. Suites are sold unfurnished. Balcony, terrace and façade variations may apply, contact a sales representative for further details. Illustrations are artist's concept only. Prices and specifications subject to change without notice. E.&O.E. October 2020.

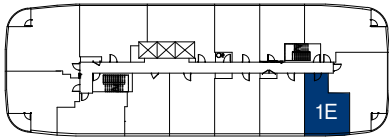


1E

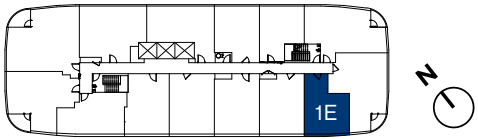
536 SQ.FT.
1 BEDROOM 1 BATHROOM
SOUTHWEST FACING

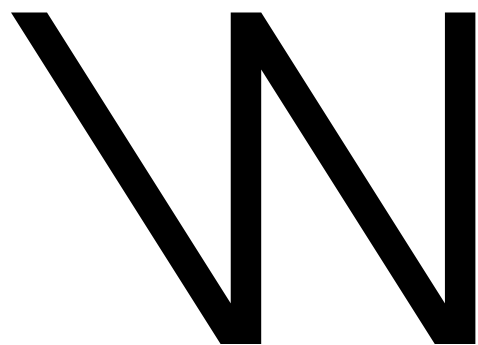


FLOOR 6



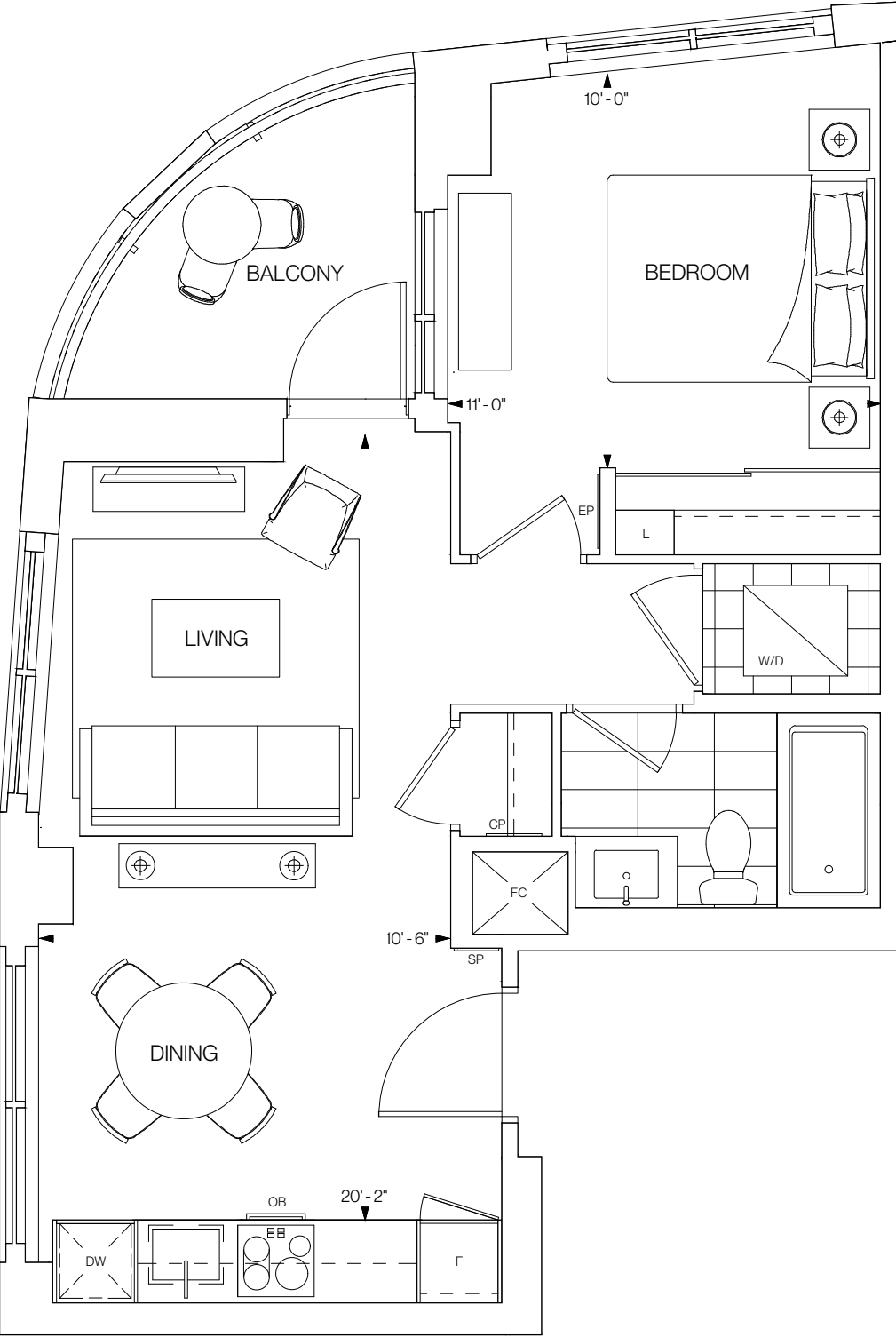
FLOORS 7-12



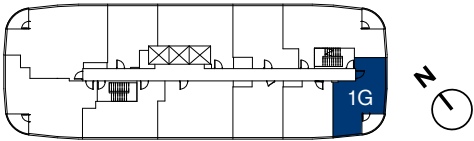


1G

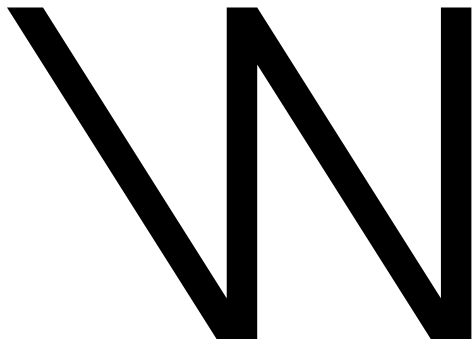
576 SQ.FT.
1 BEDROOM 1 BATHROOM
SOUTH FACING



FLOORS 14-20

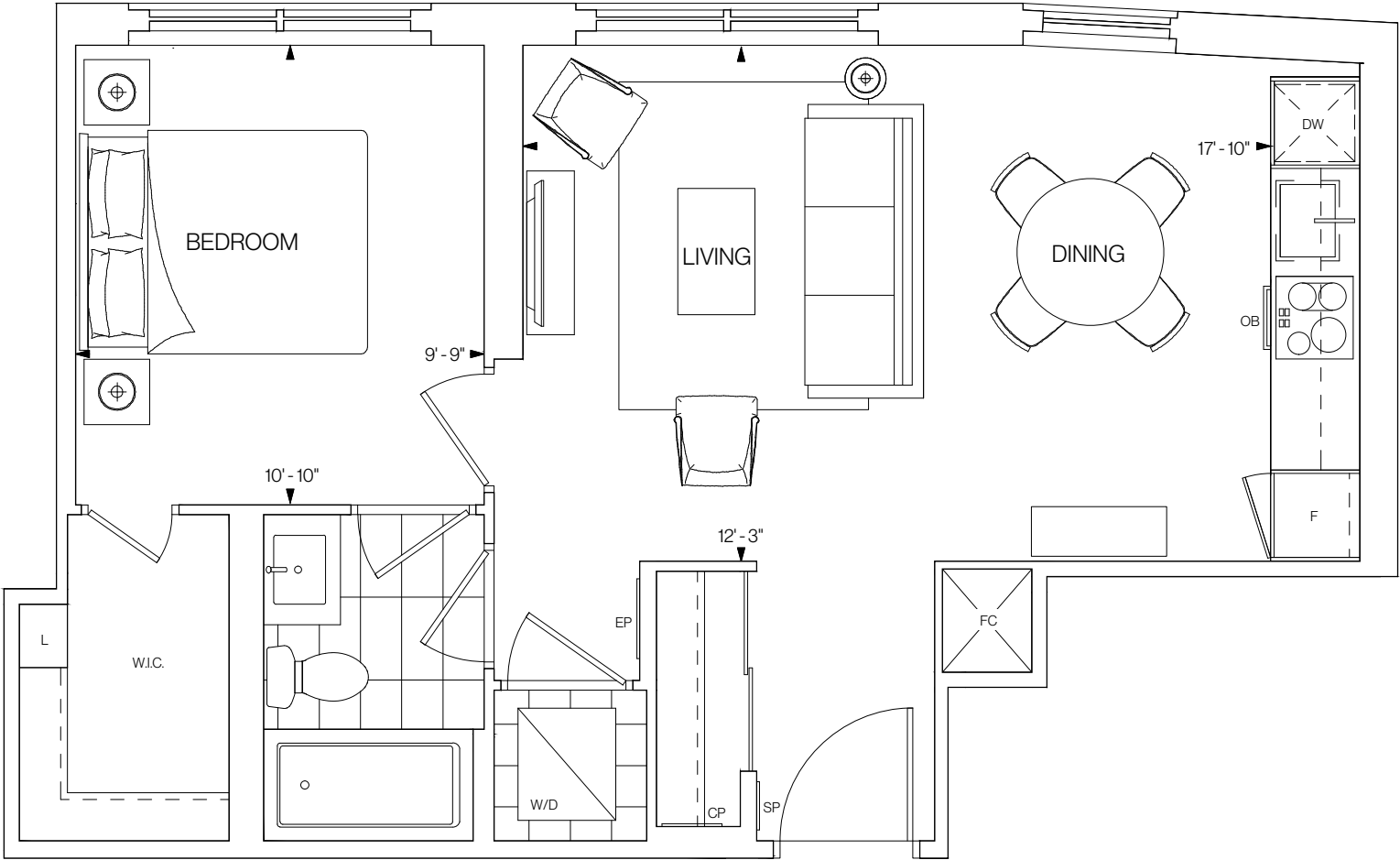


©Tridel 2020. *Tridel, "D" design, Tridel Built for Life and Tridel Built for Life Design are registered Trademarks of Tridel Corporation. Project names and logos are Trademarks of their respective owners. All rights reserved. Buildings and views not to scale. All dimensions are approximate and subject to normal construction variances. Dimensions may exceed the usable floor area. Sizes and specifications subject to change without notice. Actual usable floor space may vary from the stated floor area. Furniture is displayed for illustration purposes only and does not necessarily reflect the electrical plan for the suite. Suites are sold unfurnished. Balcony, terrace and façade variations may apply, contact a sales representative for further details. Illustrations are artist's concept only. Prices and specifications subject to change without notice. E.&O.E. October 2020.

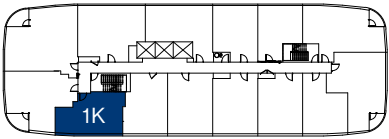


1K

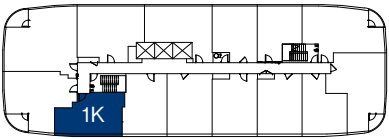
603 SQ.FT.
1 BEDROOM 1 BATHROOM
SOUTHWEST FACING



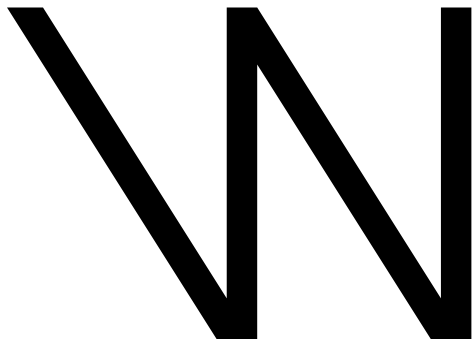
FLOOR 6



FLOORS 7-12

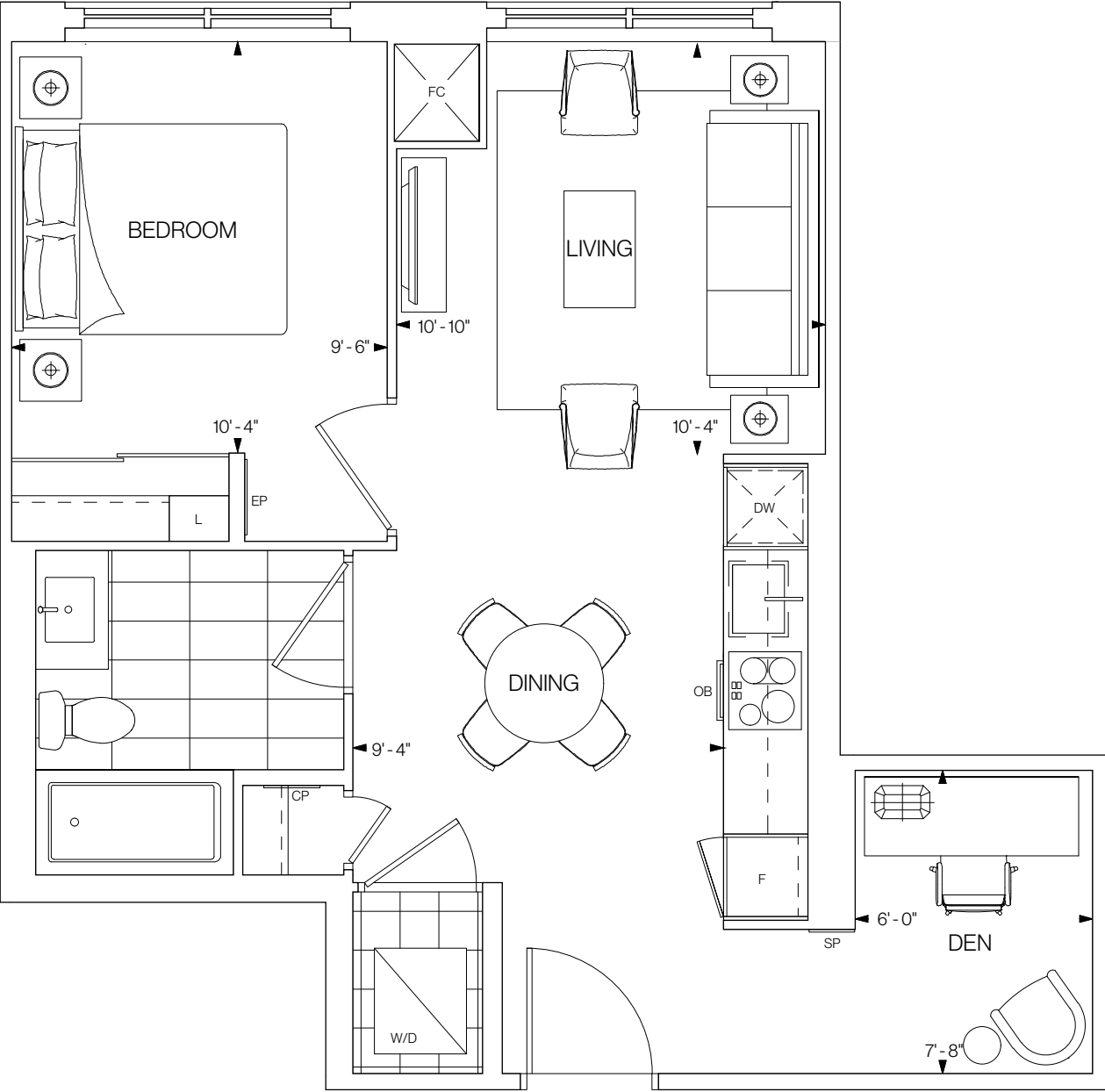


©Tridel 2020. *Tridel, "D" design, Tridel Built for Life and Tridel Built for Life Design are registered Trademarks of Tridel Corporation. Project names and logos are Trademarks of their respective owners. All rights reserved. Buildings and views not to scale. All dimensions are approximate and subject to normal construction variances. Dimensions may exceed the usable floor area. Sizes and specifications subject to change without notice. Actual usable floor space may vary from the stated floor area. Furniture is displayed for illustration purposes only and does not necessarily reflect the electrical plan for the suite. Suites are sold unfurnished. Balcony, terrace and façade variations may apply, contact a sales representative for further details. Illustrations are artist's concept only. Prices and specifications subject to change without notice. E.&O.E. October 2020.

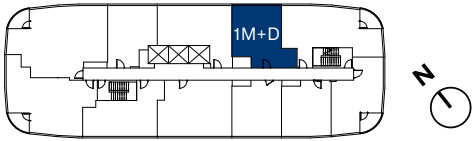


1M+D

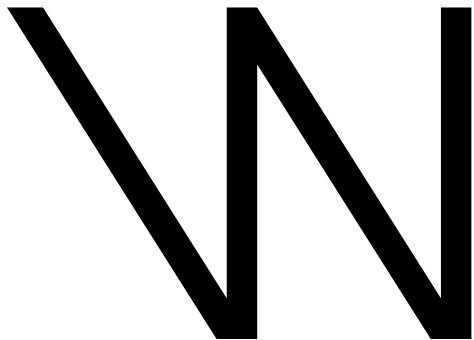
604 SQ.FT.
1 BEDROOM+DEN **1** BATHROOM
NORTHEAST FACING



FLOORS 14-20

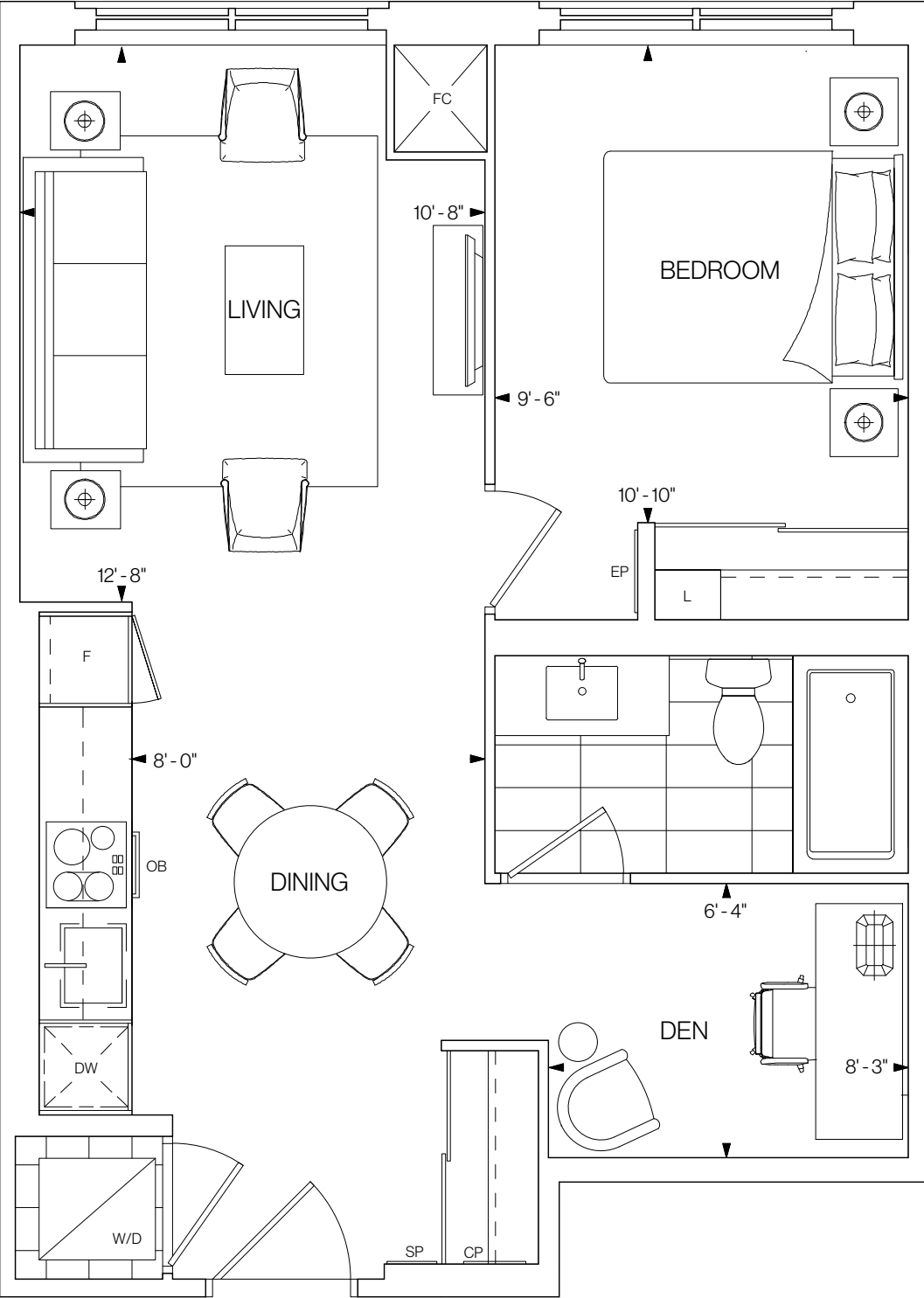


©Tridel 2020. *Tridel, "D" design, Tridel Built for Life and Tridel Built for Life Design are registered Trademarks of Tridel Corporation. Project names and logos are Trademarks of their respective owners. All rights reserved. Buildings and views not to scale. All dimensions are approximate and subject to normal construction variances. Dimensions may exceed the usable floor area. Sizes and specifications subject to change without notice. Actual usable floor space may vary from the stated floor area. Furniture is displayed for illustration purposes only and does not necessarily reflect the electrical plan for the suite. Suites are sold unfurnished. Balcony, terrace and façade variations may apply, contact a sales representative for further details. Illustrations are artist's concept only. Prices and specifications subject to change without notice. E.&O.E. October 2020.

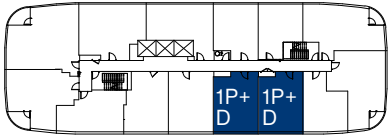


1P+D

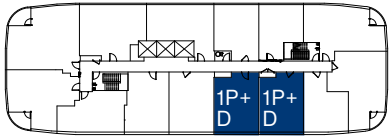
614 SQ.FT.
1 BEDROOM+DEN 1 BATHROOM
SOUTHWEST FACING



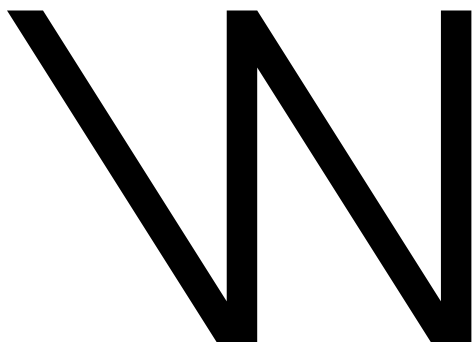
FLOOR 6



FLOORS 7-12

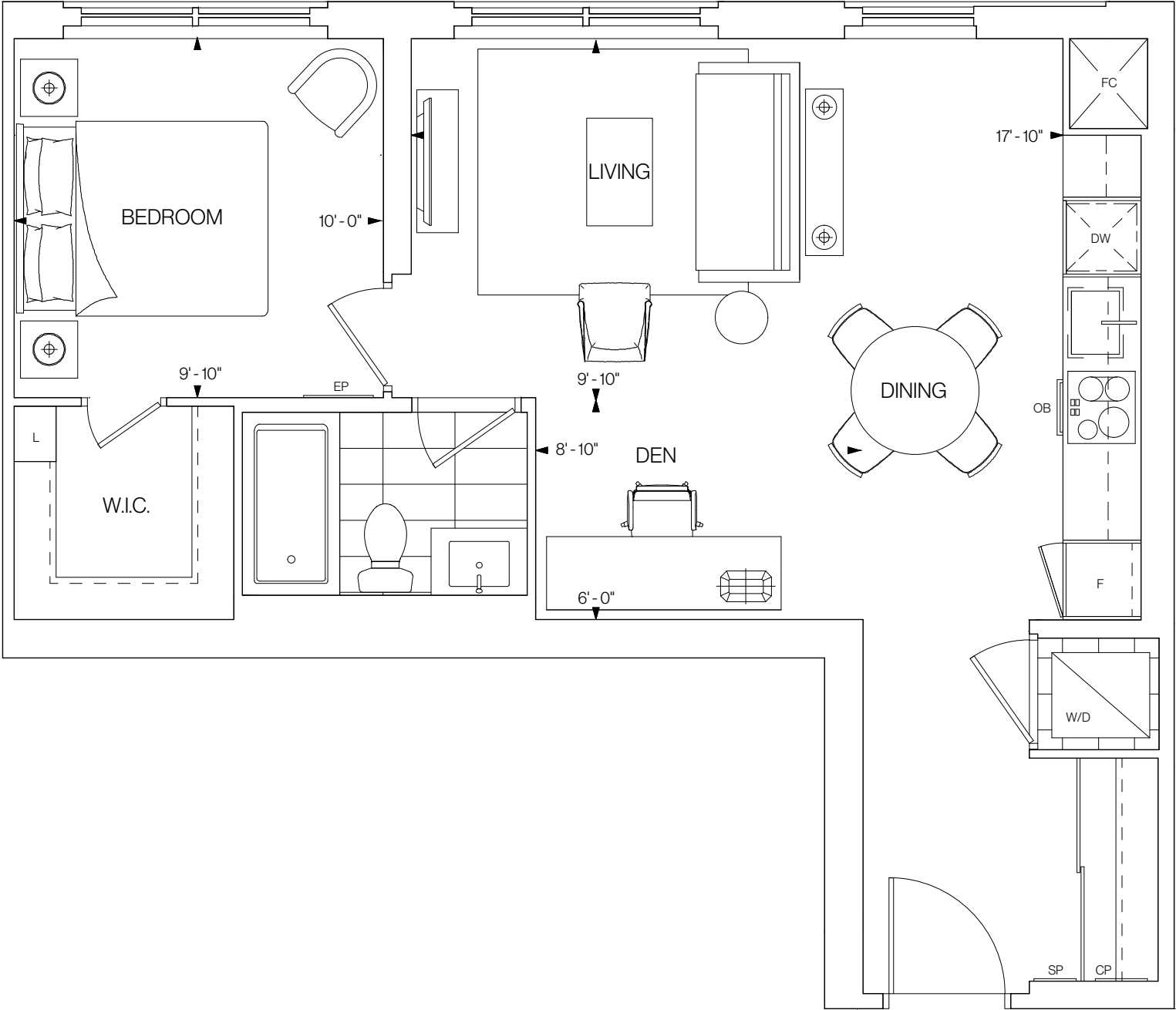


©Tridel 2020. *Tridel, "D" design, Tridel Built for Life and Tridel Built for Life Design are registered Trademarks of Tridel Corporation. Project names and logos are Trademarks of their respective owners. All rights reserved. Buildings and views not to scale. All dimensions are approximate and subject to normal construction variances. Dimensions may exceed the usable floor area. Sizes and specifications subject to change without notice. Actual usable floor space may vary from the stated floor area. Furniture is displayed for illustration purposes only and does not necessarily reflect the electrical plan for the suite. Suites are sold unfurnished. Balcony, terrace and façade variations may apply, contact a sales representative for further details. Illustrations are artist's concept only. Prices and specifications subject to change without notice. E.&O.E. October 2020.

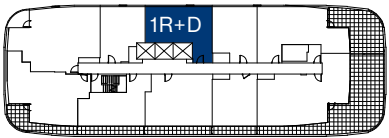


1R+D

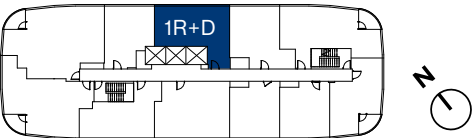
665 SQ.FT.
1 BEDROOM+DEN 1 BATHROOM
NORTHEAST FACING



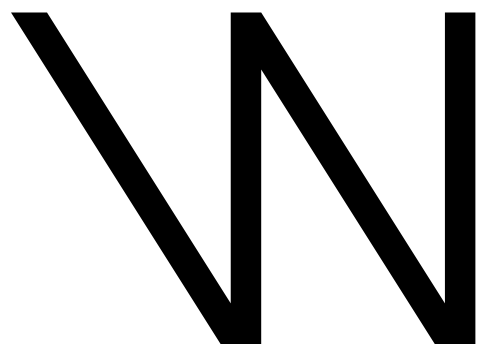
FLOOR 13



FLOORS 14-20

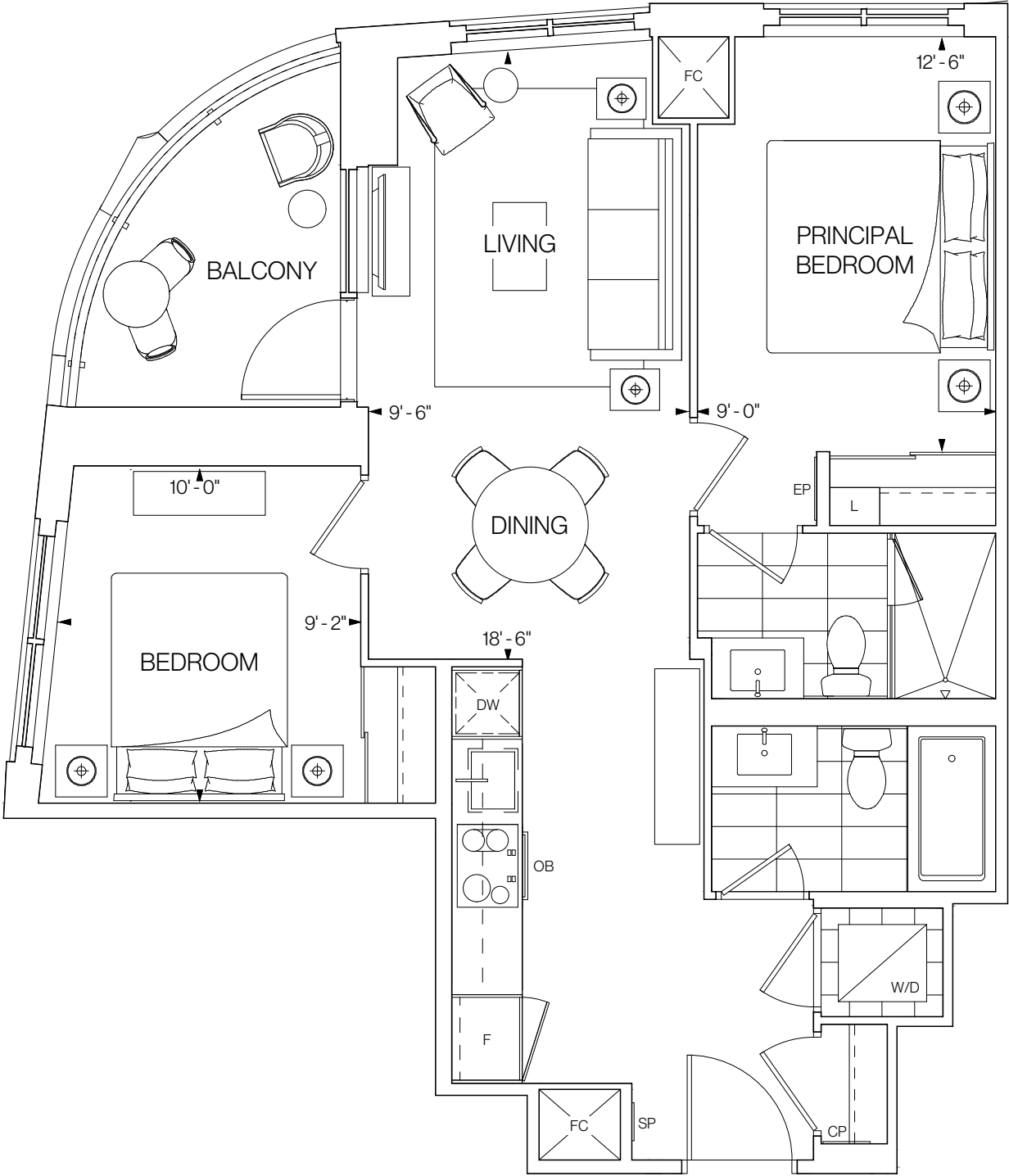


©Tridel 2020. *Tridel, "D" design, Tridel Built for Life and Tridel Built for Life Design are registered Trademarks of Tridel Corporation. Project names and logos are Trademarks of their respective owners. All rights reserved. Buildings and views not to scale. All dimensions are approximate and subject to normal construction variances. Dimensions may exceed the usable floor area. Sizes and specifications subject to change without notice. Actual usable floor space may vary from the stated floor area. Furniture is displayed for illustration purposes only and does not necessarily reflect the electrical plan for the suite. Suites are sold unfurnished. Balcony, terrace and façade variations may apply, contact a sales representative for further details. Illustrations are artist's concept only. Prices and specifications subject to change without notice. E.&O.E. October 2020.

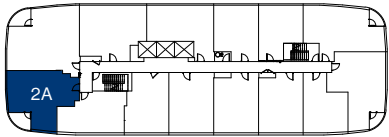


2A

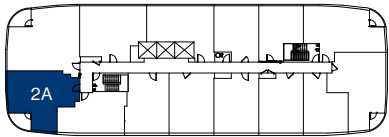
769 SQ.FT.
2 BEDROOMS 2 BATHROOMS
WEST FACING



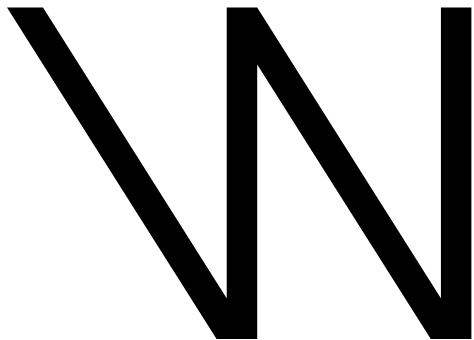
FLOOR 6



FLOORS 7-12

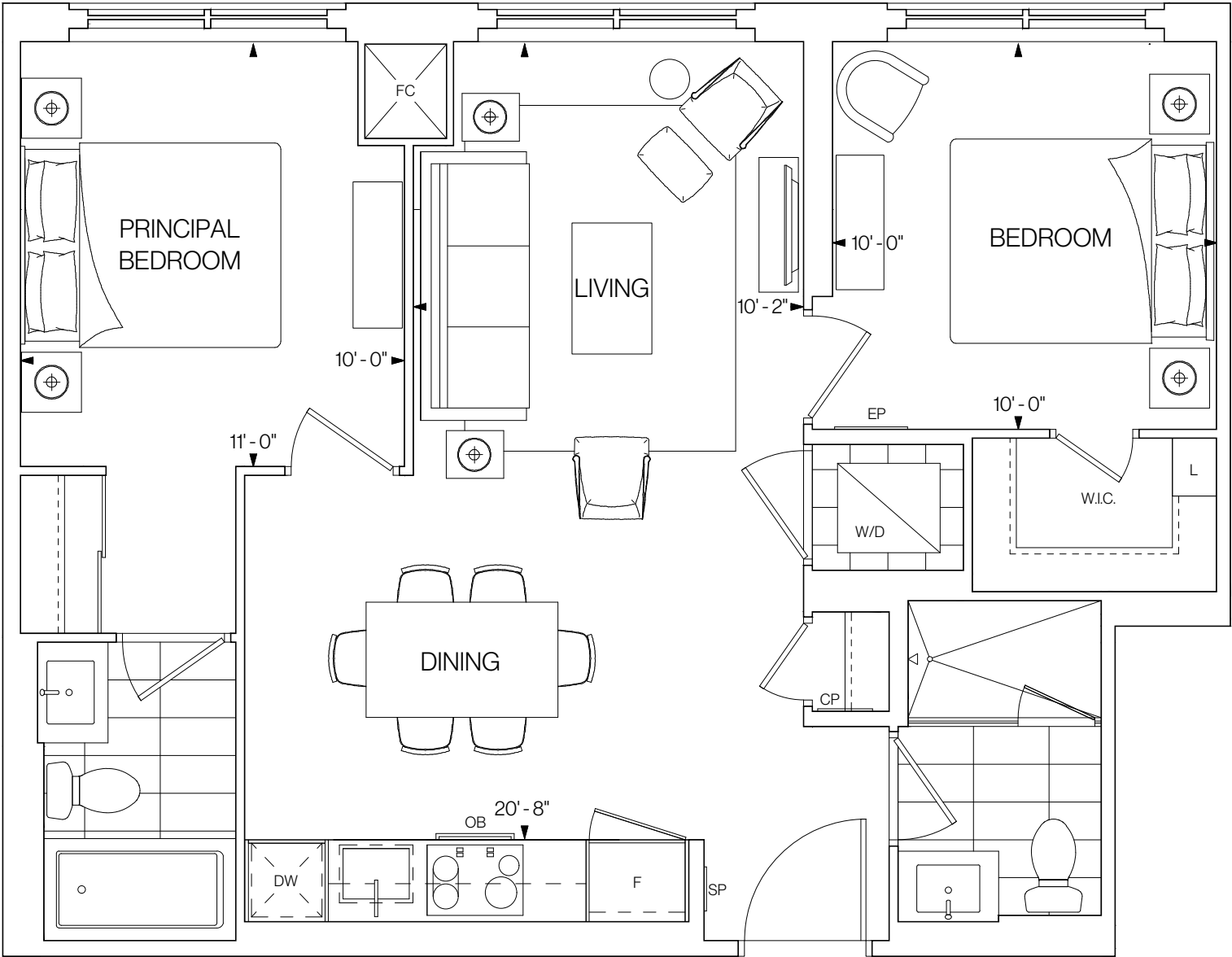


©Tridel 2020. *Tridel, "D" design, Tridel Built for Life and Tridel Built for Life Design are registered Trademarks of Tridel Corporation. Project names and logos are Trademarks of their respective owners. All rights reserved. Buildings and views not to scale. All dimensions are approximate and subject to normal construction variances. Dimensions may exceed the usable floor area. Sizes and specifications subject to change without notice. Actual usable floor space may vary from the stated floor area. Furniture is displayed for illustration purposes only and does not necessarily reflect the electrical plan for the suite. Suites are sold unfurnished. Balcony, terrace and façade variations may apply, contact a sales representative for further details. Illustrations are artist's concept only. Prices and specifications subject to change without notice. E.&O.E. October 2020.

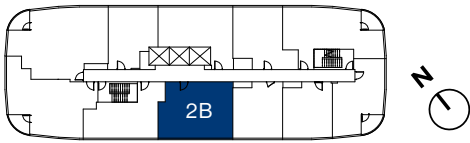


2B

769 SQ.FT.
2 BEDROOMS 2 BATHROOMS
SOUTHWEST FACING



FLOORS 14-20

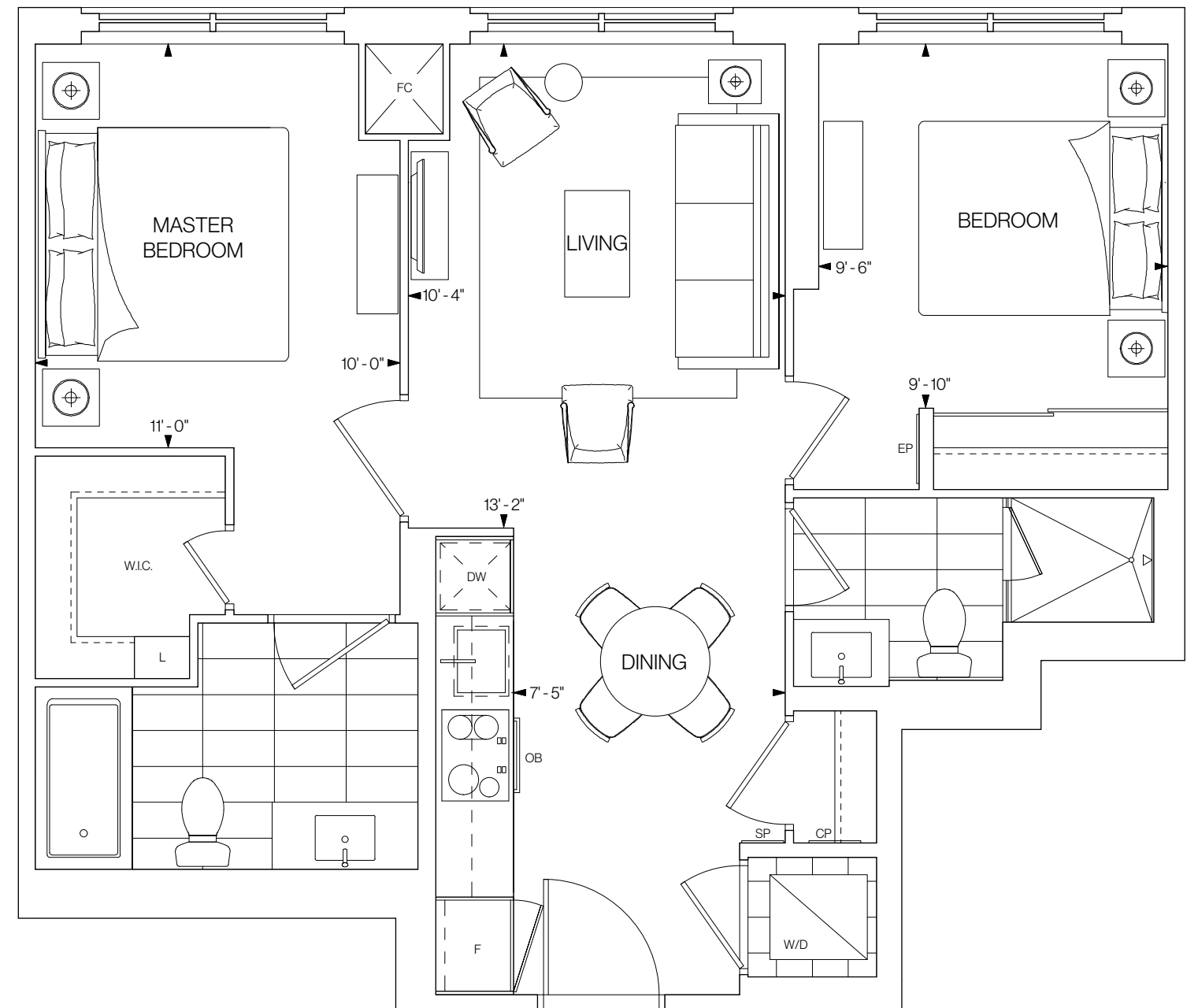


©Tridel 2020. *Tridel, "D" design, Tridel Built for Life and Tridel Built for Life Design are registered Trademarks of Tridel Corporation. Project names and logos are Trademarks of their respective owners. All rights reserved. Buildings and views not to scale. All dimensions are approximate and subject to normal construction variances. Dimensions may exceed the usable floor area. Sizes and specifications subject to change without notice. Actual usable floor space may vary from the stated floor area. Furniture is displayed for illustration purposes only and does not necessarily reflect the electrical plan for the suite. Suites are sold unfurnished. Balcony, terrace and façade variations may apply, contact a sales representative for further details. Illustrations are artist's concept only. Prices and specifications subject to change without notice. E.&O.E. October 2020.

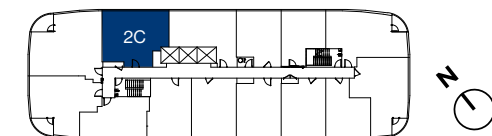
W

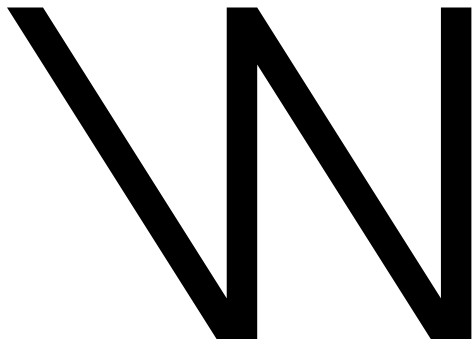
2C

786 SQ.FT.
2 BEDROOMS 2 BATHROOMS
NORTHEAST FACING



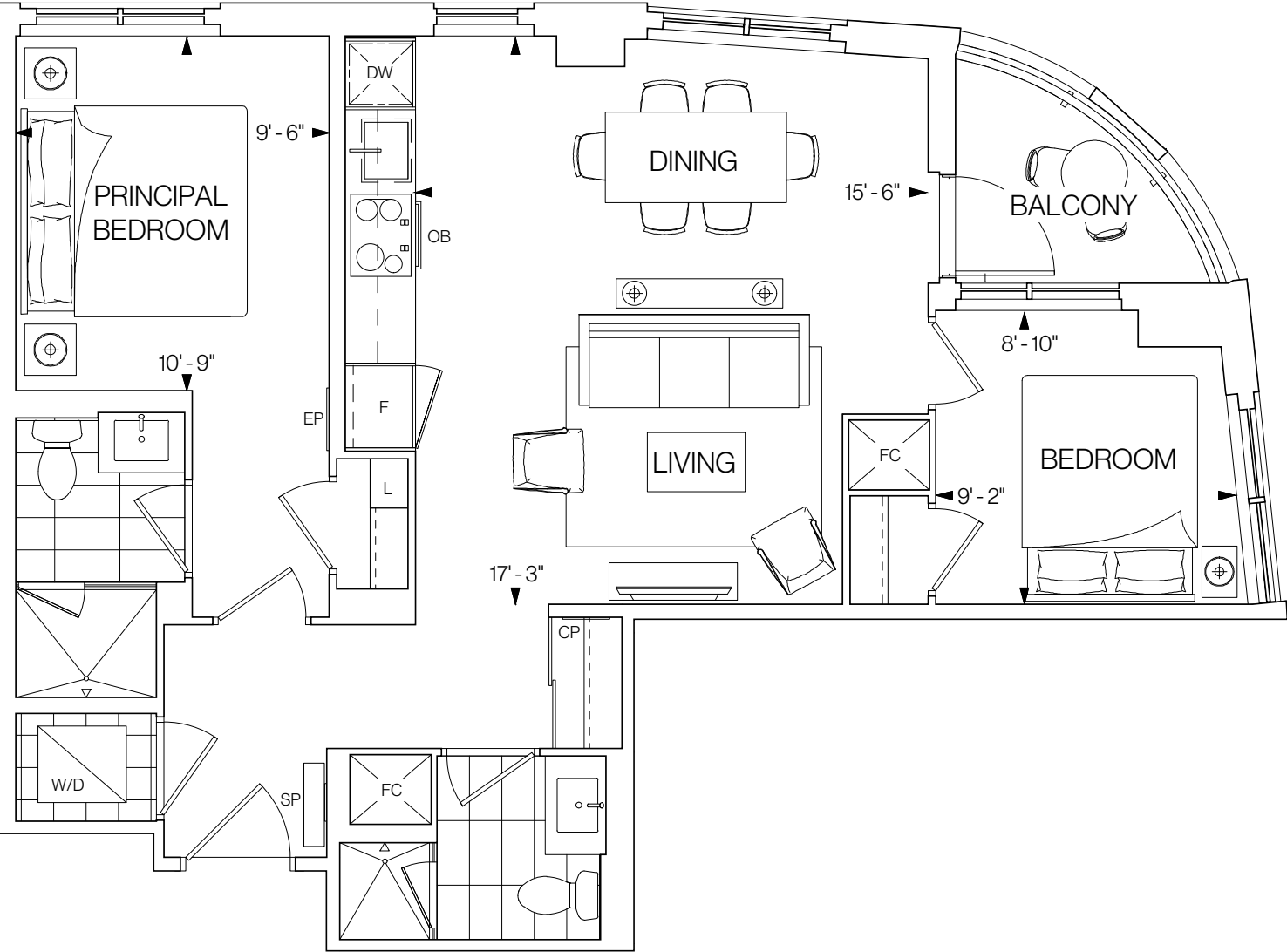
FLOORS 7-12



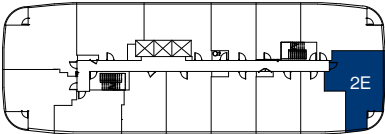


2E

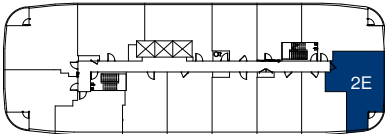
800 SQ.FT.
2 BEDROOMS 2 BATHROOMS
SOUTH FACING



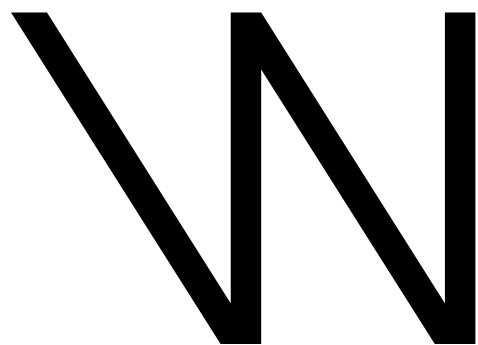
FLOOR 6



FLOORS 7-12

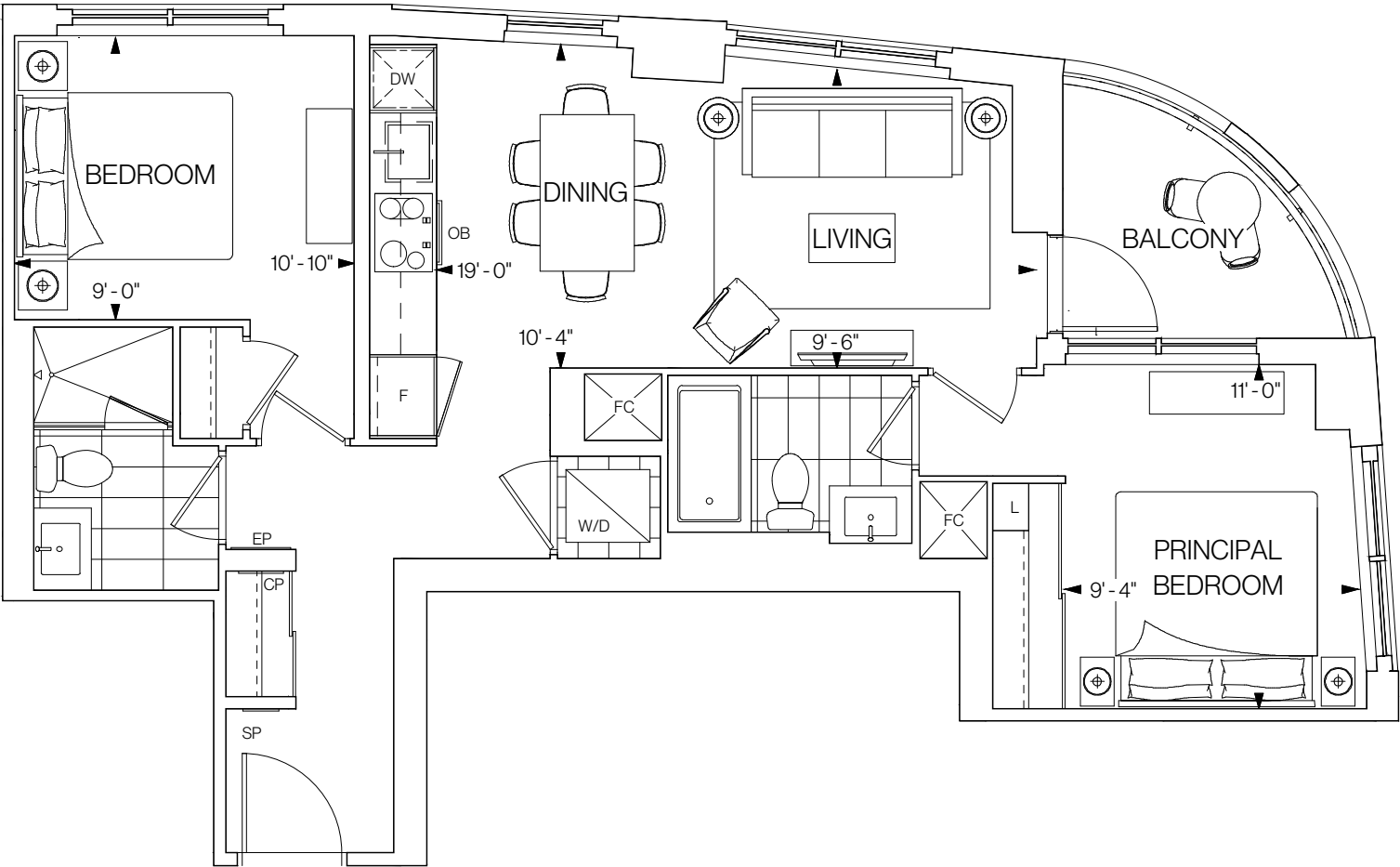


©Tridel 2020. *Tridel, "D" design, Tridel Built for Life and Tridel Built for Life Design are registered Trademarks of Tridel Corporation. Project names and logos are Trademarks of their respective owners. All rights reserved. Buildings and views not to scale. All dimensions are approximate and subject to normal construction variances. Dimensions may exceed the usable floor area. Sizes and specifications subject to change without notice. Actual usable floor space may vary from the stated floor area. Furniture is displayed for illustration purposes only and does not necessarily reflect the electrical plan for the suite. Suites are sold unfurnished. Balcony, terrace and façade variations may apply, contact a sales representative for further details. Illustrations are artist's concept only. Prices and specifications subject to change without notice. E.&O.E. October 2020.

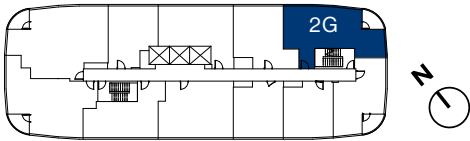


2G

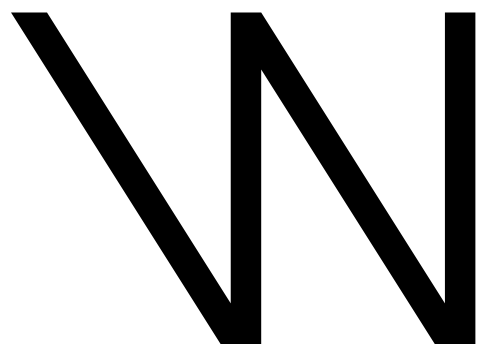
818 SQ.FT.
2 BEDROOMS 2 BATHROOMS
EAST FACING



FLOORS 14-20

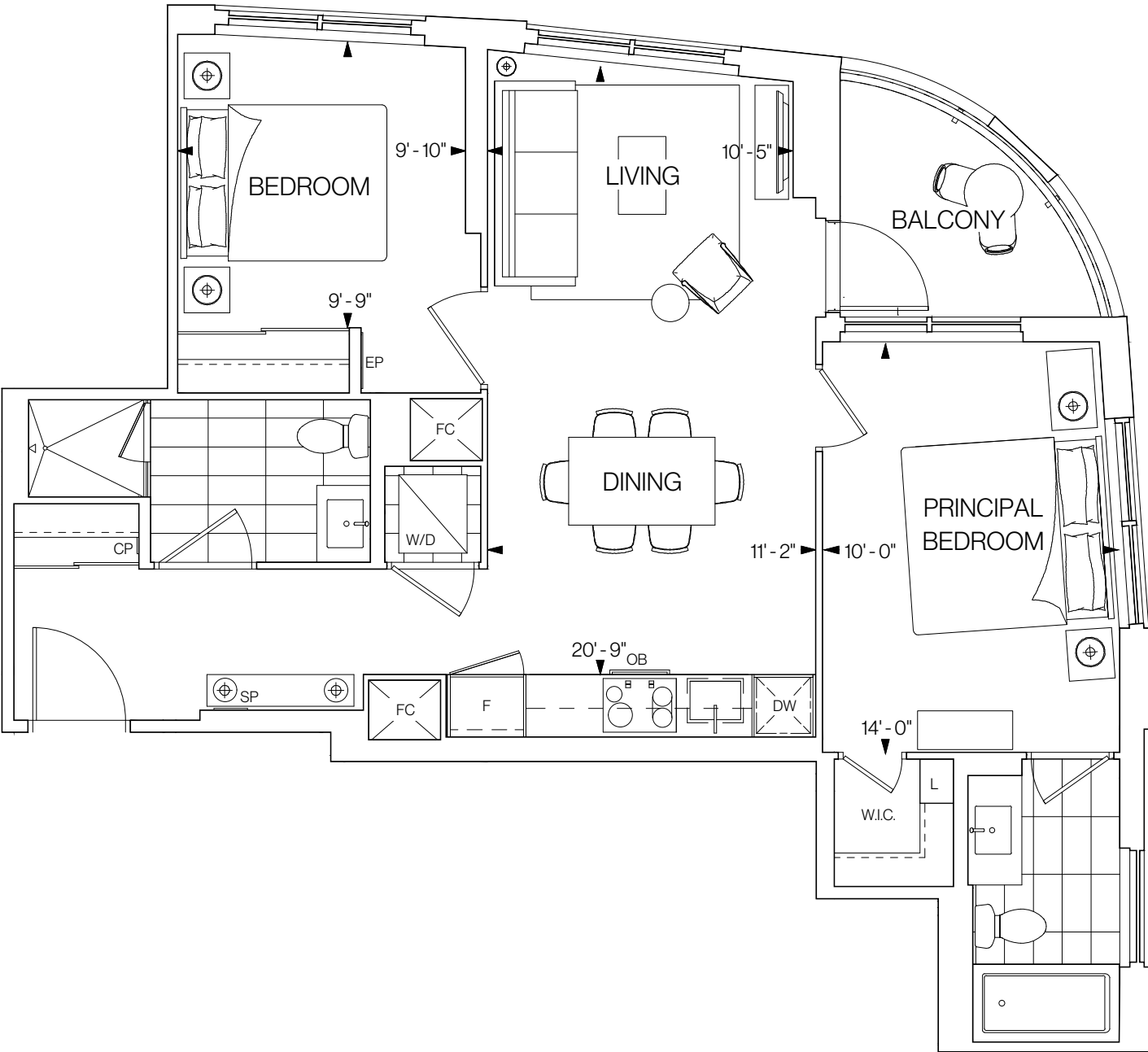


©Tridel 2020. *Tridel, "D" design, Tridel Built for Life and Tridel Built for Life Design are registered Trademarks of Tridel Corporation. Project names and logos are Trademarks of their respective owners. All rights reserved. Buildings and views not to scale. All dimensions are approximate and subject to normal construction variances. Dimensions may exceed the usable floor area. Sizes and specifications subject to change without notice. Actual usable floor space may vary from the stated floor area. Furniture is displayed for illustration purposes only and does not necessarily reflect the electrical plan for the suite. Suites are sold unfurnished. Balcony, terrace and façade variations may apply, contact a sales representative for further details. Illustrations are artist's concept only. Prices and specifications subject to change without notice. E.&O.E. October 2020.

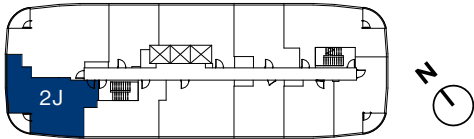


2J

889 SQ.FT.
2 BEDROOMS 2 BATHROOMS
WEST FACING



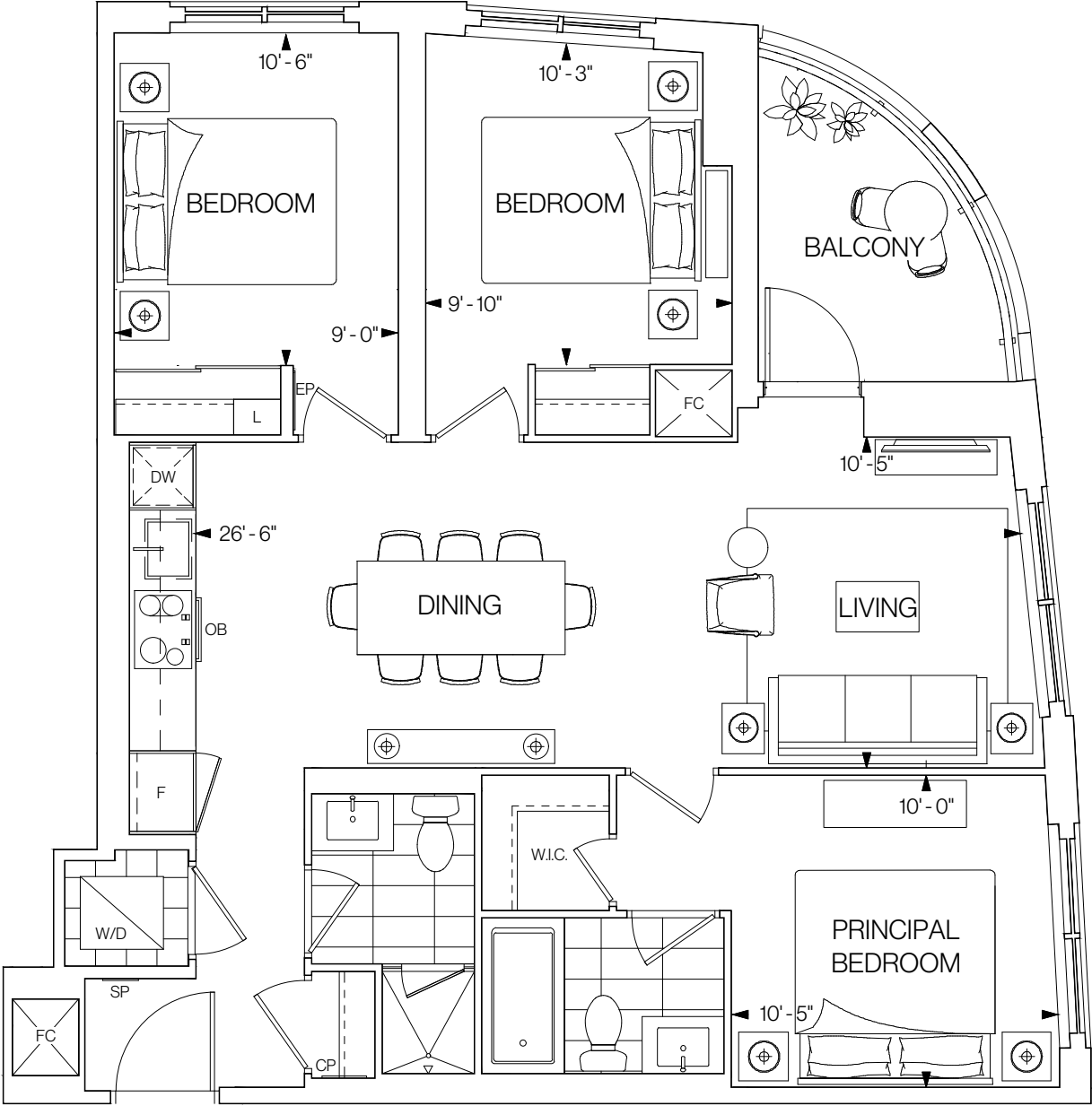
FLOORS 14-20



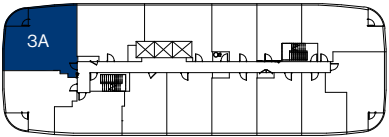
©Tridel 2020. *Tridel, "D" design, Tridel Built for Life and Tridel Built for Life Design are registered Trademarks of Tridel Corporation. Project names and logos are Trademarks of their respective owners. All rights reserved. Buildings and views not to scale. All dimensions are approximate and subject to normal construction variances. Dimensions may exceed the usable floor area. Sizes and specifications subject to change without notice. Actual usable floor space may vary from the stated floor area. Furniture is displayed for illustration purposes only and does not necessarily reflect the electrical plan for the suite. Suites are sold unfurnished. Balcony, terrace and façade variations may apply, contact a sales representative for further details. Illustrations are artist's concept only. Prices and specifications subject to change without notice. E.&O.E. October 2020.

W 3A

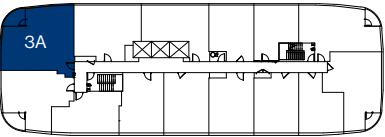
987 SQ.FT.
3 BEDROOMS 2 BATHROOMS
NORTH FACING

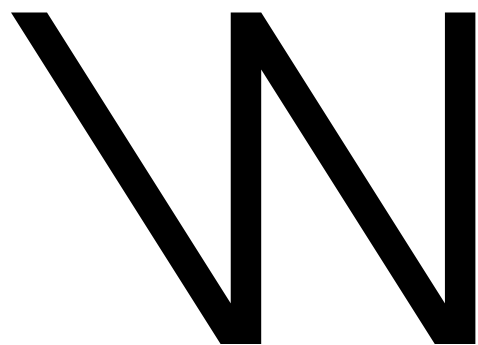


FLOOR 6



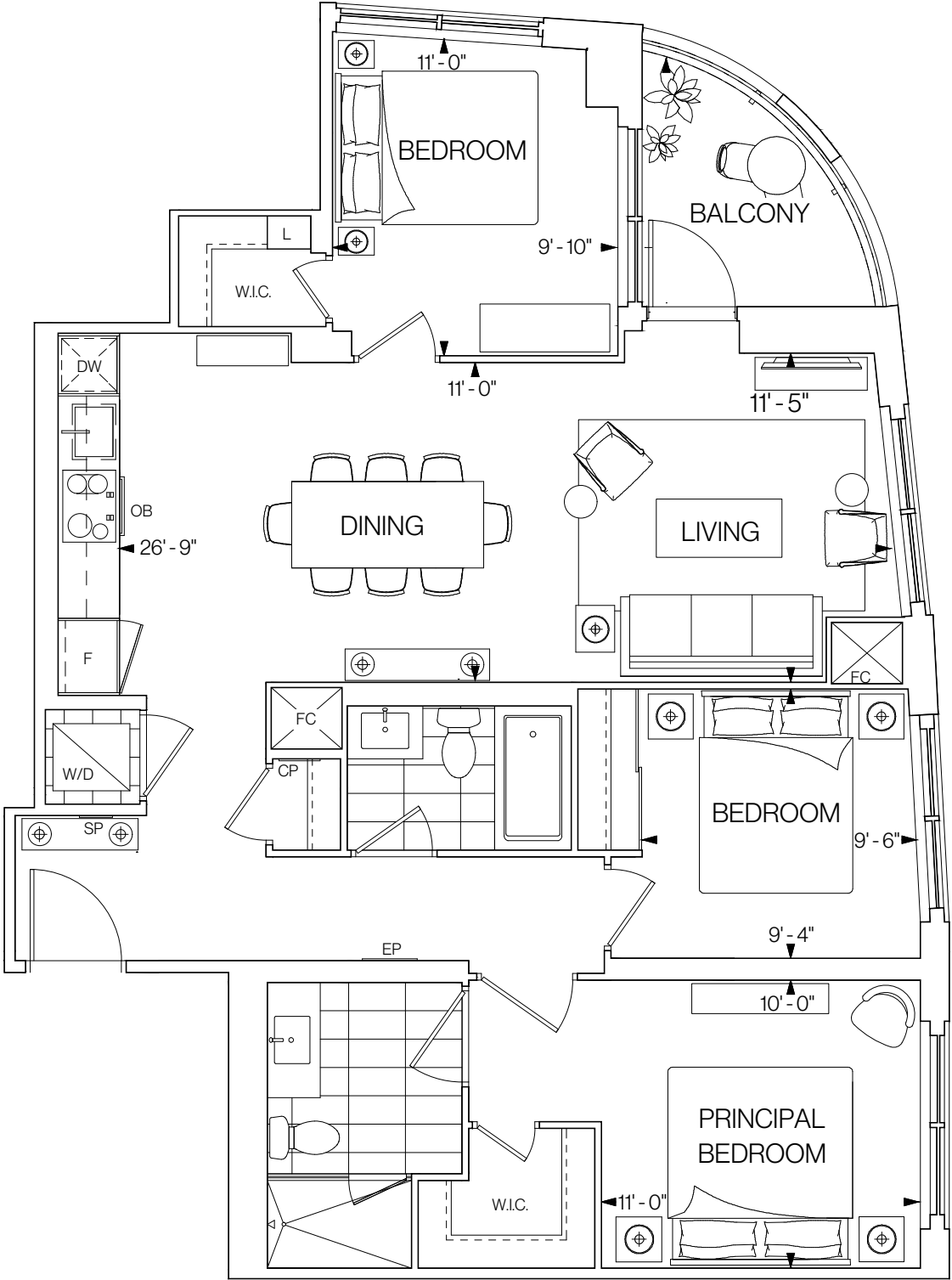
FLOORS 7-12



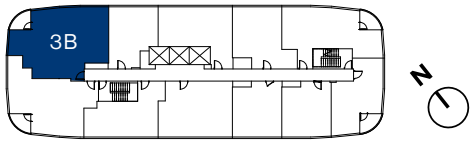


3B

1,118 SQ.FT.
3 BEDROOMS 2 BATHROOMS
NORTH FACING



FLOORS 14-20



©Tridel 2020. *Tridel, "D" design, Tridel Built for Life and Tridel Built for Life Design are registered Trademarks of Tridel Corporation. Project names and logos are Trademarks of their respective owners. All rights reserved. Buildings and views not to scale. All dimensions are approximate and subject to normal construction variances. Dimensions may exceed the usable floor area. Sizes and specifications subject to change without notice. Actual usable floor space may vary from the stated floor area. Furniture is displayed for illustration purposes only and does not necessarily reflect the electrical plan for the suite. Suites are sold unfurnished. Balcony, terrace and façade variations may apply, contact a sales representative for further details. Illustrations are artist's concept only. Prices and specifications subject to change without notice. E.&O.E. October 2020.